



Free Downloads of Build Instructions,  
Assembly Booklets & How To Guides

**BuildInstructions.com**



# BUILDING AND PAINTING MINIATURES

For many collectors, assembling and painting their models is the most enjoyable part of the Warhammer hobby. Citadel Miniatures are beautiful and incredibly intricate in their design, and when they are arranged fully painted upon the tabletop, they look simply stunning.

For all their impressive detail, Citadel Miniatures are designed to be incredibly easy to put together. The warbands provided in this set are push-fit, requiring no glue to attach the separate components together. Simply snip the individual components off the sprue using a pair of hobby cutters, and connect them as indicated in the accompanying guide. It's the work of seconds to assemble your band of heroes. If you wish, you could immediately start playing with them in their coloured plastic form, experiencing all the thrills of the Warhammer Underworlds tabletop game without ever picking up a paintbrush.

However, many hobbyists prefer to take the time to paint their models, utilising the simple and effective Citadel Colour System, and the wide range of paint colours and types available at Games Workshop retail outlets or on the webstore. Veteran painters will delight in the opportunity to bring these characters to life, coming up with their own vibrant colour schemes and picking out areas of detail or interesting textures with painstaking care.

There is no right or wrong way to paint your Warhammer Underworlds miniatures, whether you choose to follow the step-by-step guides provided within these pages, or try something completely different. Embrace your creativity!

## PAINTING GUIDES

The [citadelcolour.com](http://citadelcolour.com) site is a fantastic source of inspiration for both budding and veteran hobbyists. It offers a range of painting guides for different armies and colour schemes, and explains how to use the Citadel Colour System.

In addition, if you subscribe to Warhammer+, you get access to Citadel Colour Masterclass videos on [warhammertv.com](http://warhammertv.com).

**WARHAMMER+**



*You can find all of the paints and tools you need to bring your miniatures to life at [warhammer.com](http://warhammer.com) and in your local Warhammer store. There are also many independent retailers who stock our products.*



Citadel Miniatures do not come already assembled, but putting these kits together is both easy and rewarding. Your models will come on a number of plastic frames (1), with each individual component clearly marked. All you need to build them is a pair of cutters (2) which can be found in any Warhammer store. Then, simply follow the instructions on pages 12-15 to build your models (3).

In time, you might even find yourself experimenting with more ambitious methods, such as combining components from different kits in order to create something unique to your collection – this is a great way of putting your stamp upon your warband!



When your models have been built, you can begin the satisfying process of bringing them to life with your paintbrush. Whatever your skill level, painted miniatures look great whether arranged on a cabinet shelf or charging across a tabletop battlefield, and the sense of achievement from painting them just can't be beaten. It always pays to take your time choosing the right colour scheme for your warband; this will help to imbue your models with character and define who they are. Once you're ready to begin, Games Workshop offers a huge range of paints and brushes, along with all the information, advice and guides you'll need to go from beginner to accomplished painter in no time.



Using the Citadel Colour System, you can follow an easy three-step process to quickly get your warriors looking 'Battle Ready'. After priming your miniatures with spray paint, you will first apply some flat colour using Base paints (1). Then, an application of Shade paints (2) will add depth to the detail. Finally, you will use Layer paints (3) to pick out the raised surfaces and add some highlights. Achieving great results with your painting really is that simple!

If you want to get your warband painted as fast as possible, then Contrast paints are for you. When used over special Contrast primer spray, they provide both depth and vibrancy in one application, allowing you to get your miniatures Battle Ready in no time. The Petitioner on the right was painted using just one paint for each colour!





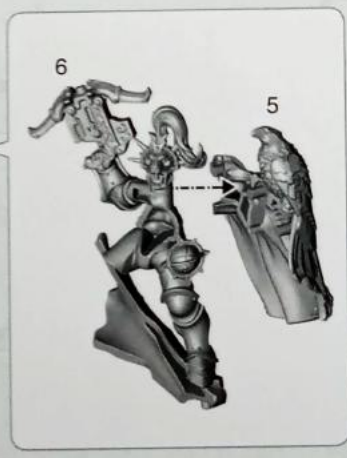
# THE FARSTRIDERS ASSEMBLY GUIDE

**!** **READ THIS FIRST**  
BEFORE ASSEMBLING YOUR MINIATURES, PLEASE READ THROUGH THE INSTRUCTIONS CAREFULLY, AND RETAIN THEM FOR FUTURE REFERENCE. Carefully remove the models from the frame, asking an adult for assistance, and push the models together as shown.

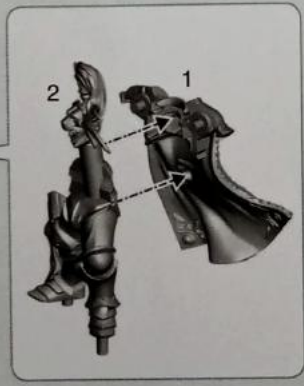
**12+**

**NO GLUE REQUIRED**

## 1. SANSON FARSTRIDER



## 2. ELIAS SWIFTBLADE





### 3. ALMERIC EAGLE-EYE



## THE FARSTRIDERS - PAINTING GUIDE

These stunning miniatures were expertly painted by the 'Eavy Metal team. If you're inspired to paint your warband in the glorious golds of the Hammers of Sigmar, this guide gives you a great way to do just that!



- BASE** NAGGAROTH NIGHT
- LAYER** SOTEK GREEN
- LAYER** TEMPLE GUARD BLUE
- LAYER** BAHARROTH BLUE

- BASE** MEPHISTON RED
- SHADE** CARROBURG CRIMSON
- LAYER** EVIL SUNZ SCARLET
- LAYER** FIRE DRAGON BRIGHT

- BASE** RETRIBUTOR ARMOUR
- SHADE** REIKLAND FLESHSHADE
- LAYER** LIBERATOR GOLD
- LAYER** STORMHOST SILVER



- BASE** KANTOR BLUE
- SHADE** MULN OIL
- LAYER** TECLIS BLUE
- LAYER** FENRISIAN GREY

- BASE** RHINOX HIDE
- SHADE** MULN OIL
- LAYER** GORTHOR BROWN
- LAYER** KARAK STONE



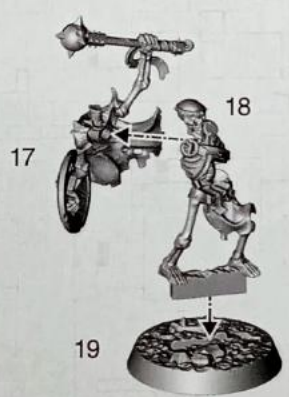


# SEPULCHRAL GUARD ASSEMBLY GUIDE

## 1. THE SEPULCHRAL WARDEN



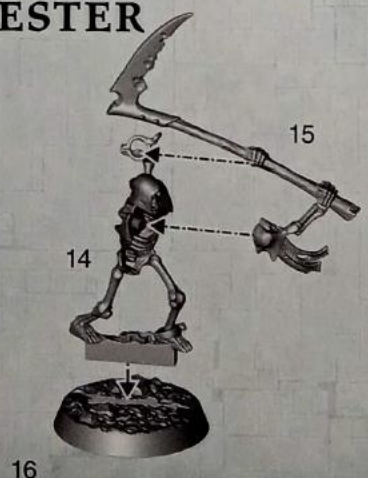
## 2. THE PRINCE OF DUST



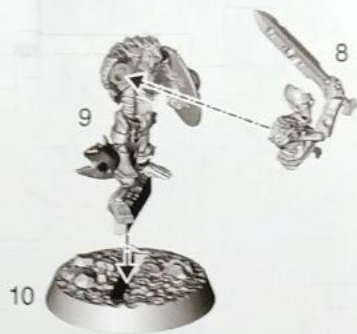
## 3. THE CHAMPION



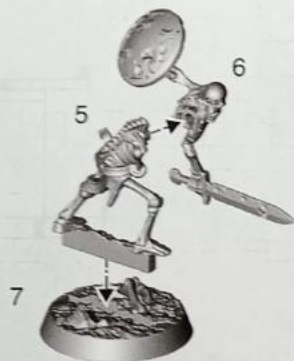
## 4. THE HARVESTER



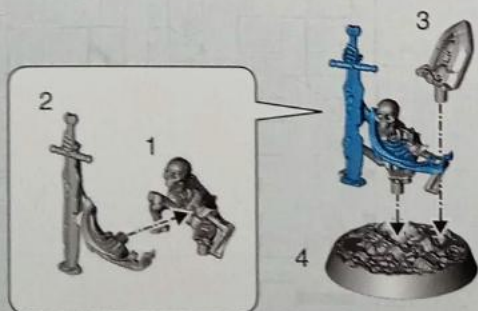
## 5. INEVITABLE PETITIONER



## 6. ZEALOUS PETITIONER



## 7. RISING PETITIONER



## SEPULCHRAL GUARD - PAINTING GUIDE

This miniature was expertly painted by the 'Eavy Metal team once again. If this skeletal colour scheme takes your fancy, the guide below is a great place to start!

**BASE** ZANDRI DUST  
**SHADE** AGRAX EARTHSHADE  
**LAYER** SCREAMING SKULL  
**LAYER** WHITE SCAR

**BASE** BALTHASAR GOLD  
**SHADE** AGRAX EARTHSHADE  
**LAYER** HASHUT COPPER  
**LAYER** RUNEFANG STEEL

**BASE** ABADDON BLACK  
**LAYER** ESHIN GREY  
**LAYER** DAWNSTONE  
**LAYER** ADMINISTRATUM GREY

**BASE** RHINOX HIDE  
**SHADE** NULN OIL  
**LAYER** GORTHOR BROWN  
**LAYER** BANEGLADE BROWN

**BASE** KHORNE RED  
**SHADE** NULN OIL  
**LAYER** EVIL SUNZ SCARLET  
**LAYER** BESTIGOR FLESH

