



Free Downloads of Build Instructions,  
Assembly Booklets & How To Guides

**BuildInstructions.com**

# WARHAMMER FORGE BASILISK

TM

TM

1. Arm A
2. Hand A
3. Thumb A
4. Arm B
5. Hand B
6. Thumb B
7. Arm C
8. Hand C
9. Thumb C
10. Arm D
11. Hand D
12. Thumb D
13. Leg E
14. Leg F
15. Leg G
16. Leg H
17. Tail
18. Scenic Base
19. Body
20. Plastic Base



This kit contains all the pieces required to make a complete Basilisk To glue the resin pieces together use Citadel Super Glue.

**NOTE:** We have cast this kit using the most advanced techniques and the best quality resin, but due to the nature of the casting process your model may contain very slight air bubbles. These can easily be filled with model filler or super glue. Any slight warpage of thin parts can easily be corrected by immersing the part in hot tap water for about 1 minute then carefully bending it back into shape.

### THIS IS NOT A TOY

Not suitable for children under 15 years of age.

**WARNING:** Resin dust can be harmful if inhaled. Always wear a dust mask or respirator when sanding or sawing resin parts.

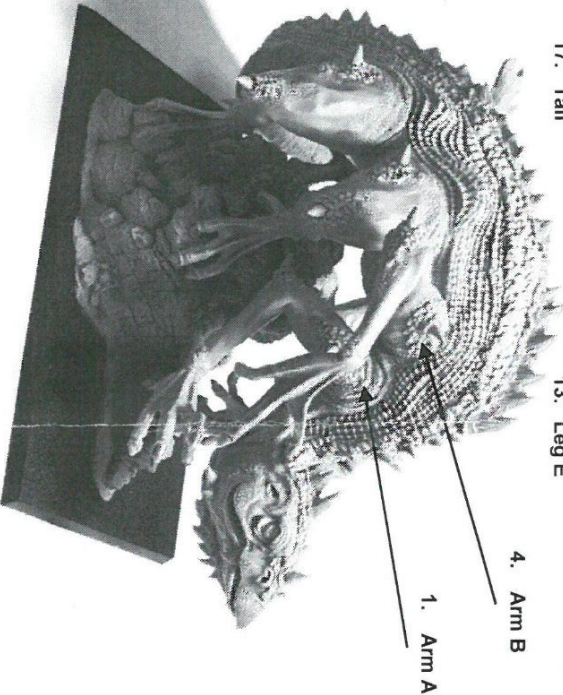
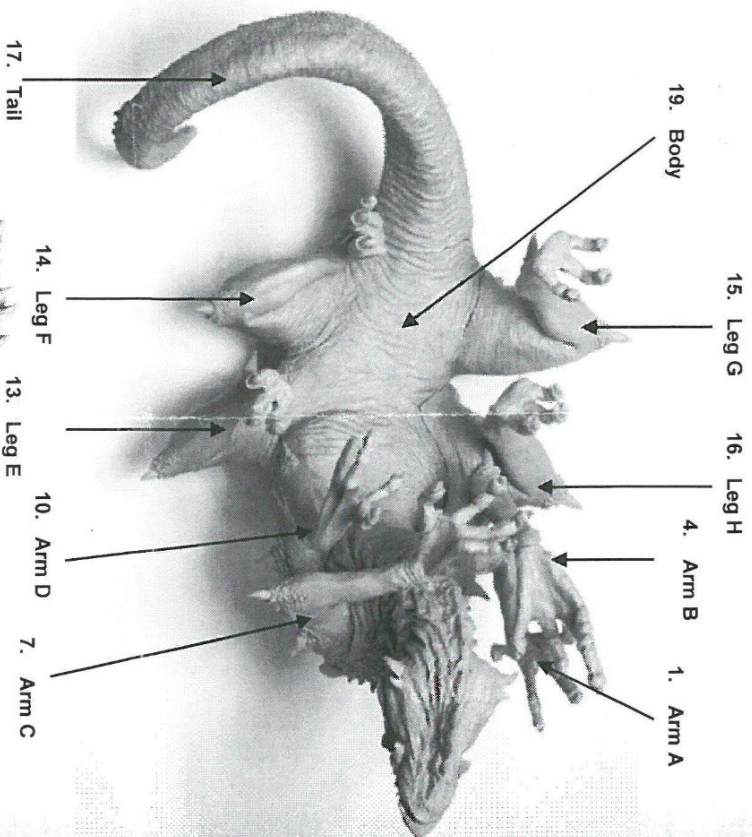
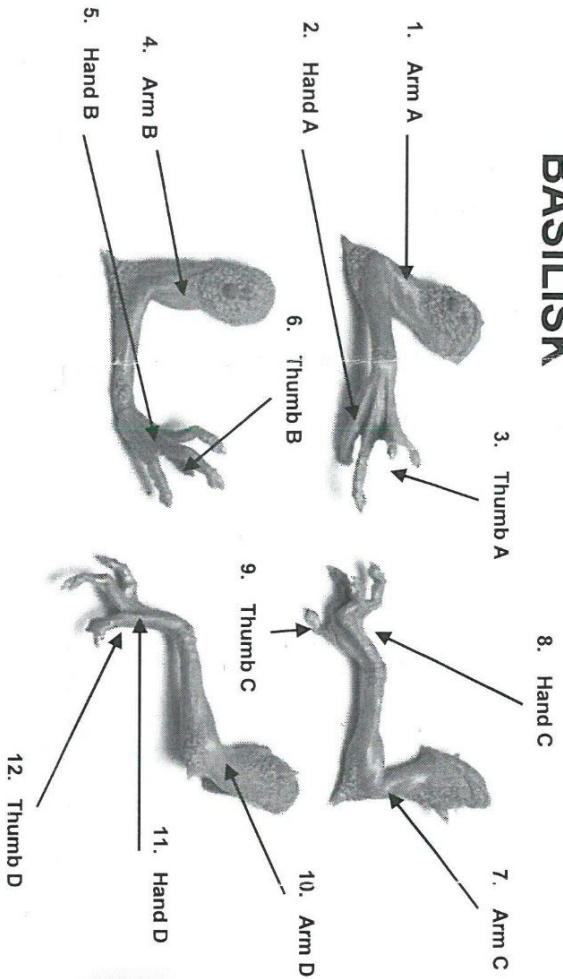
Product code : 99590299056

The copyright on the model designs and components within this box is the exclusive property of Games Workshop Ltd. Copyright Games Workshop Ltd., 2012. All rights reserved.

Forge World, Games Workshop, Willow Road, Lenton, Nottingham, NG7 2WS, UK. Tel. 0044 (0)115 916 8177

# WARHAMMER FORGE BASILISK

TM TM



The copyright on the model designs and components within this box is the exclusive property of Games Workshop Ltd. Copyright Games Workshop Ltd., 2012. All rights reserved.

Product code : 99590299056

Forge World, Games Workshop, Willow Road, Lenton, Nottingham, NG7 2WS, UK. Tel. 0044 (0)115 916 8177