



Free Downloads of Build Instructions,  
Assembly Booklets & How To Guides

**BuildInstructions.com**

**WARHAMMER**  
40,000

# DARK IMPERIUM

## SPACE MARINES

STEPS  
ÉTAPES • PASSO  
SCHRIITTE • FASE

1 - 6



## DEATH GUARD

STEPS  
ÉTAPES • PASSO  
SCHRIITTE • FASE

7 - 10



# CONTENTS

**A** x1



**B** x2



**C** x1



**D** x2



**E** x1



**F** x1



x20



x23



x8



x1



x1



45mm  
x1



50mm  
x1



55mm  
x1

BEFORE ASSEMBLING YOUR MINIATURES PLEASE READ THROUGH THE INSTRUCTIONS  
IN THIS BOOKLET CAREFULLY

AVANT D'ASSEMBLER VOS FIGURINES,  
VEUILLEZ LIRE ATTENTIVEMENT LES INSTRUCTIONS DE CE LIVRET

POR FAVOR, LEE CUIDADOSAMENTE ESTE LIBRETO DE INSTRUCCIONES ANTES DE  
EMPEZAR A MONTAR LAS MINIATURAS

VOR DEM ZUSAMMENBAU DER MINIATUREN BITTE DIE ANWEISUNGEN IN DIESER ANLEITUNG  
AUFMERKSAM DURCHLESEN

PRIMA DI ASSEMBLARE LE TUE MINIATURE LEGGI ATTENTAMENTE TUTTE LE ISTRUZIONI  
DI QUESTO LIBRETTO

• GUIDE TO USING THESE INSTRUCTIONS

• GUIDE D'UTILISATION DE CES INSTRUCTIONS • GUÍA DE USO DE ESTAS INSTRUCCIONES

• ERKLÄRUNG DER ANWEISUNGEN • GUIDA ALLE ISTRUZIONI

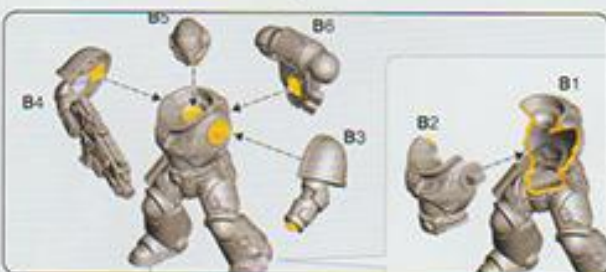
- Follow assembly in numerical and alphabetical order
- Suivre les instructions par ordre numérique ou alphabétique
- Seguir el orden numérico y alfabético de montaje
- Zusammenbau in numerischer und alphabetischer Reihenfolge
- Segui l'assemblaggio in ordine numerico e alfabetico



- Test assembly before gluing
- Tester l'assemblage avant de coller
- Comprobar el encaje antes de pegar
- Positionierung erst ohne Klebstoff ausprobieren
- Prova a secco prima di incollare



- Yellow area - Glue points
- Zone jaune - Points de colle
- Áreas amarillas - Aplicar pegamento en estos puntos
- Gelb markiert: Klebepunkte
- Area gialla - Punti di incollaggio



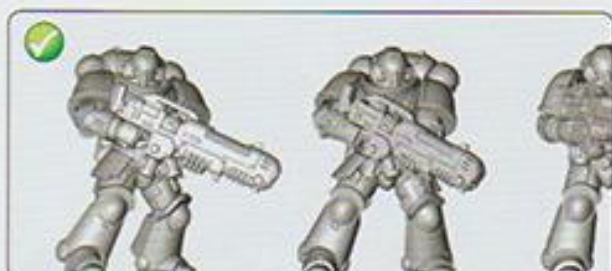
- Blue area - Previously assembled components
- Zone bleue - Éléments déjà assemblés
- Área azul - Partes montadas previamente
- Blau markiert: zuvor zusammengebaute Teile
- Area blu - Componenti precedentemente assemblati



- Green area - Variant assembly / choice of components
- Zone verte - Variante d'assemblage / choix des éléments
- Área verde - Variante de montaje / Piezas a elegir
- Grün markiert: Varianten / verschiedene Teile zur Auswahl
- Area verde - Assemblaggio alternativo / scelta di componenti



- Stage complete
- Étape terminée
- Paso completado
- Schritt abgeschlossen
- Fase completa

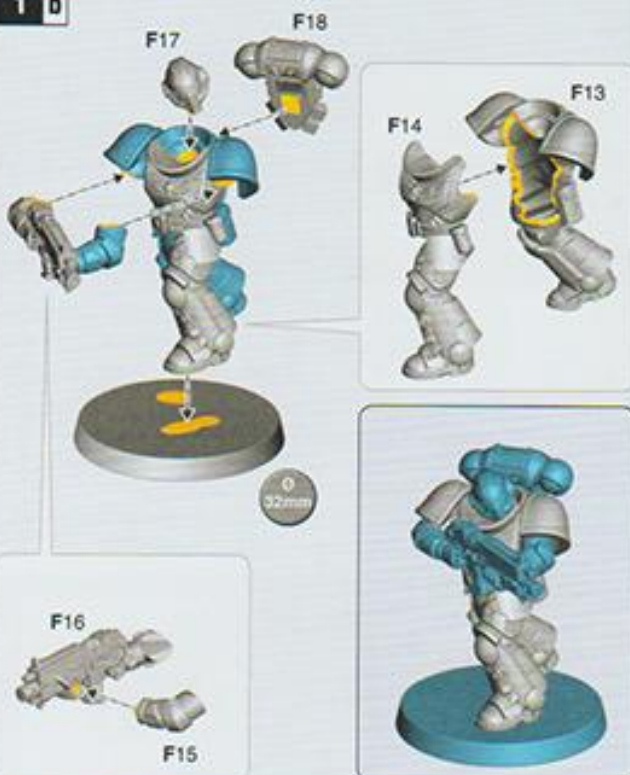


# 1 SPACE MARINE INTERCESSOR SQUAD A

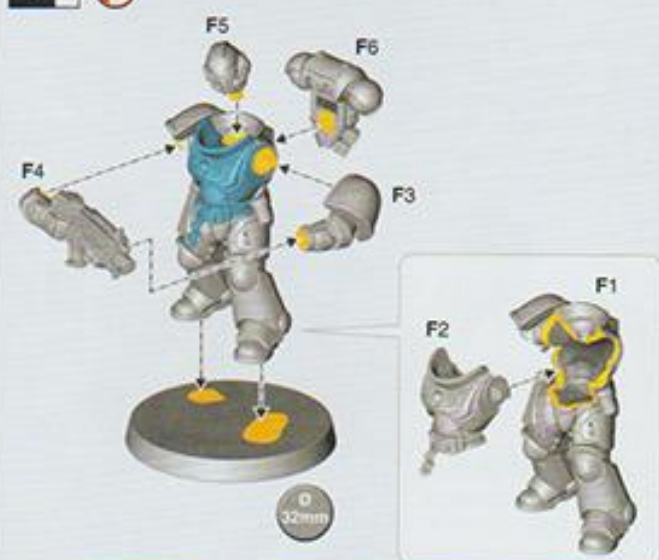
1 a



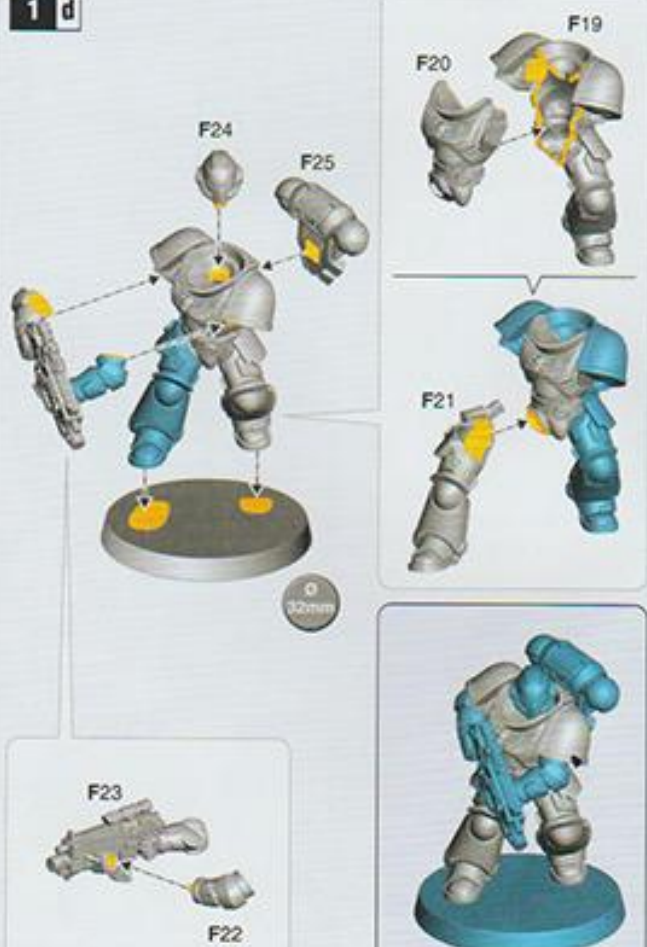
1 b



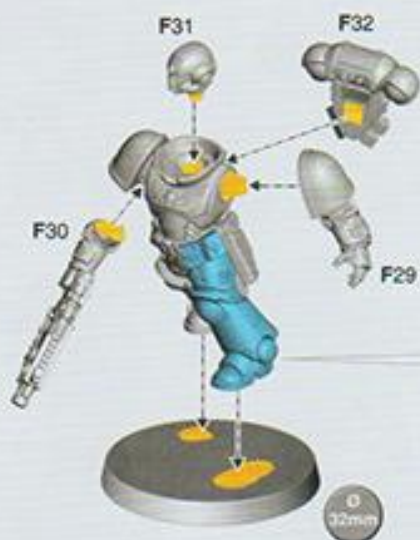
1 c



1 d



## 1 e SPACE MARINE SERGEANT



1 d



1 b



1 c



1 d



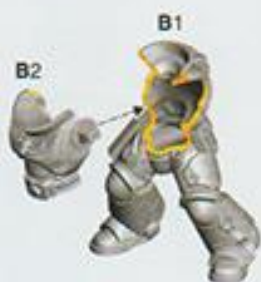
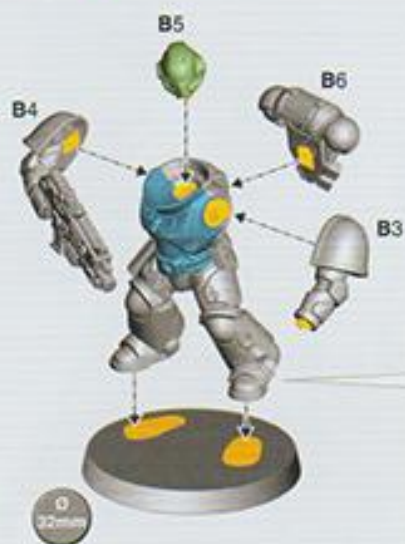
1 e

## 2 SPACE MARINE INTERCESSOR SQUAD B

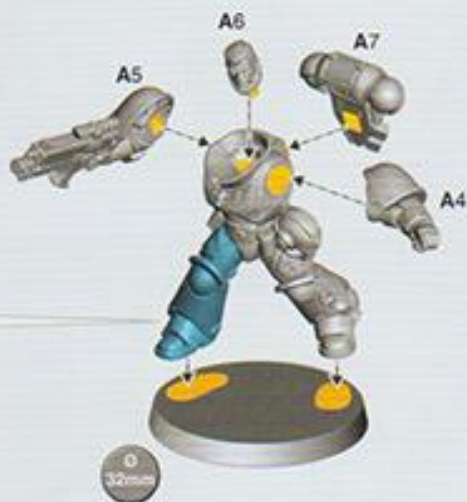
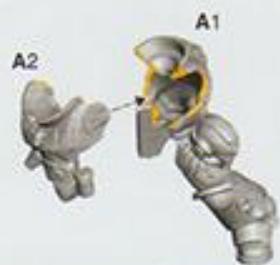
### 2 a x2



2 b x2



2 c SPACE MARINE SERGEANT



2 a



2 a



2 b



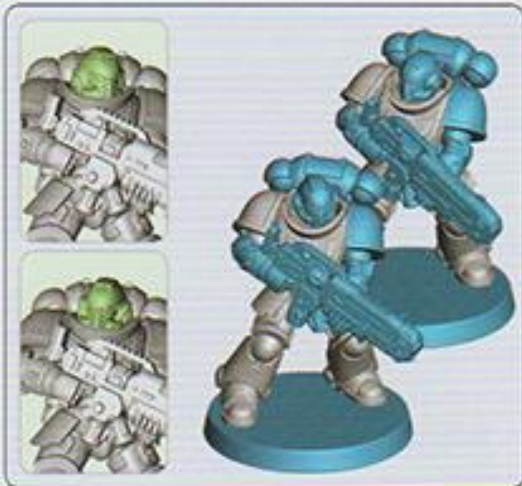
2 b



2 c

### 3 SPACE MARINE HELLBLASTER SQUAD

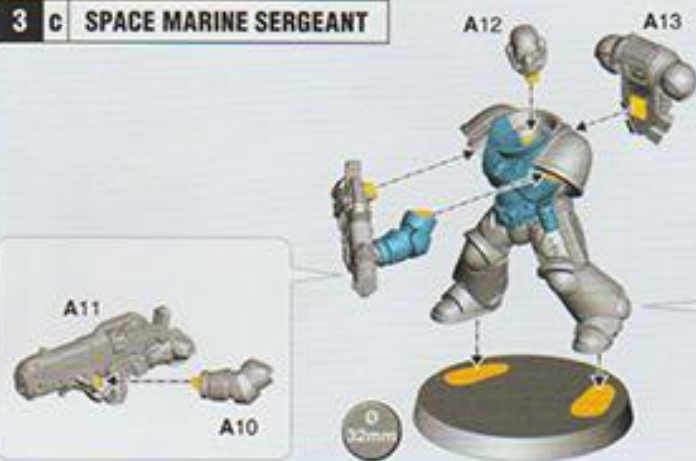
3 a x2



3 b x2



3 c SPACE MARINE SERGEANT



3 a



3 b



3 b



3 b

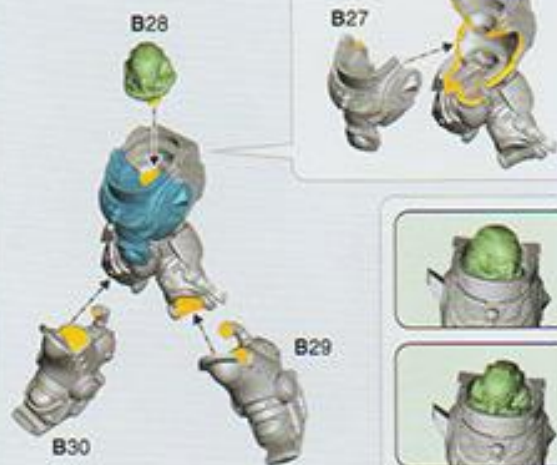


3 c

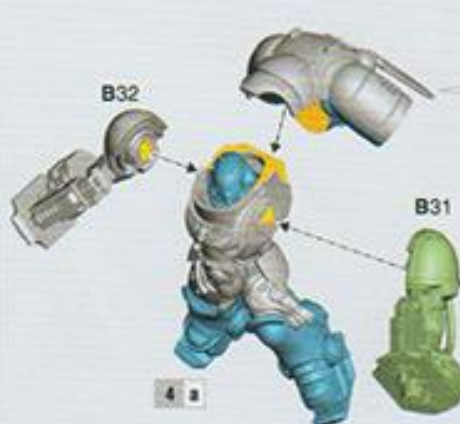


# 4 SPACE MARINE INCEPTOR SQUAD

4 a x2



4 b x2



B34



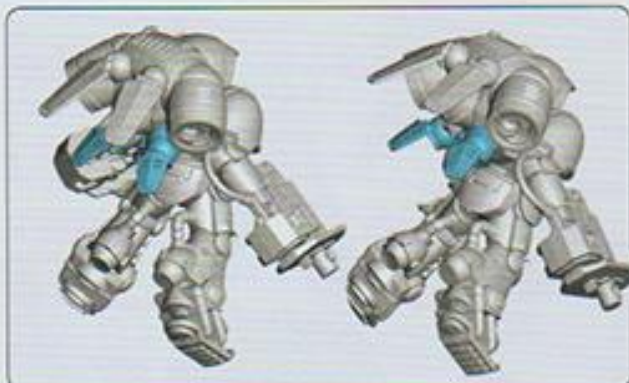
B33



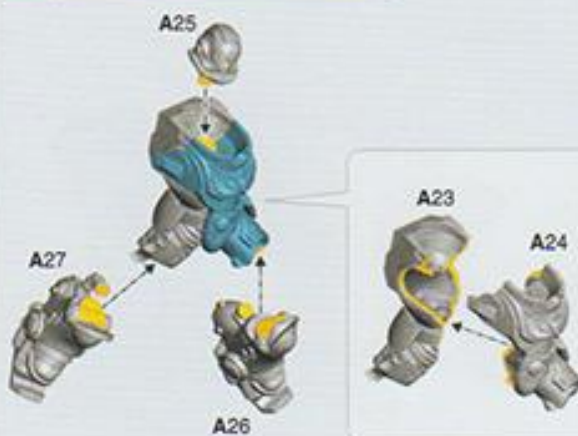
4 c x2



4 b



4 d SPACE MARINE SERGEANT



4 e



A31



A30

4 f

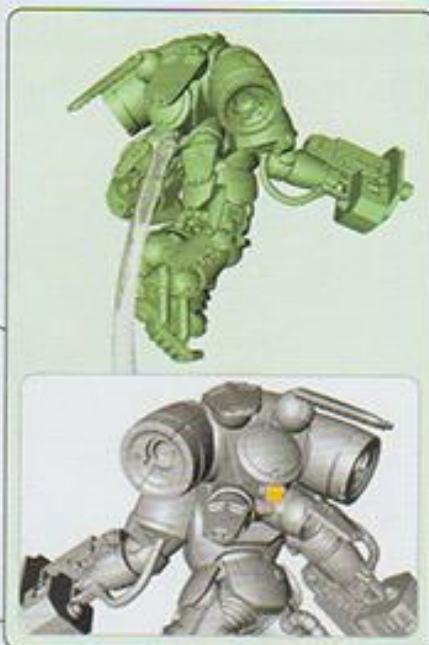
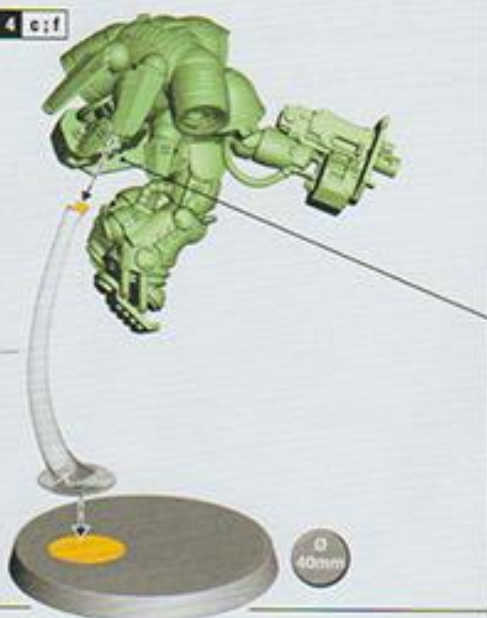


4 e



4 g x3

4 of

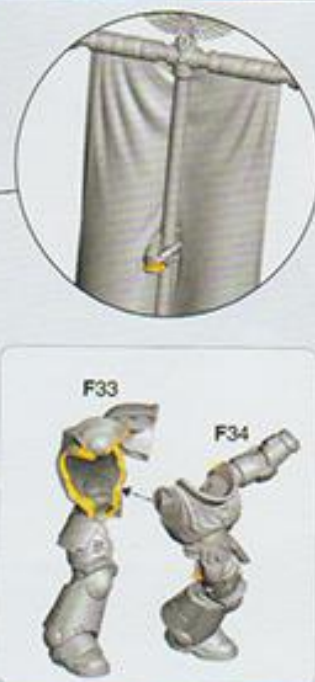
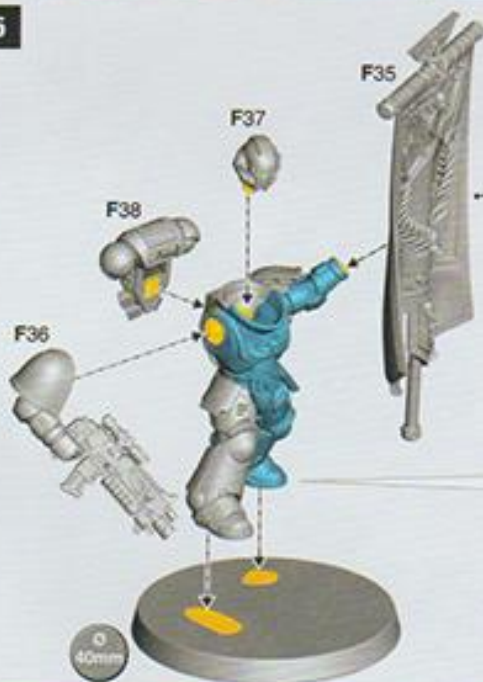


SPACE MARINE SERGEANT



## 5 SPACE MARINE ANCIENT

5



## 6 SPACE MARINE LIEUTENANTS & SPACE MARINE CAPTAIN

### 6 a SPACE MARINE LIEUTENANT WITH AUTO BOLT RIFLE



### 6 b SPACE MARINE LIEUTENANT WITH POWER SWORD



### 6 c SPACE MARINE CAPTAIN



**6 a****6 c****6 b**

## ULTRAMARINES

### ULTRAMARINES

HELLBLASTERS ①

INTERCESSORS

INCEPTORS

CHARACTERS ④

### CHAPTER MARKINGS

② ③ ④ ⑤ ⑥ ⑦ ⑧ ⑨ ⑩ ⑪ ⑫ ⑬ ⑭ ⑮ ⑯ ⑰ ⑱ ⑲ ⑳ ㉑ ㉒ ㉓ ㉔ ㉕ ㉖ ㉗ ㉘ ㉙ ㉚ ㉛ ㉜ ㉝ ㉞ ㉟ ㊱ ㊲ ㊳ ㊴ ㊵ ㊶ ㊷ ㊸ ㊹ ㊺ ㊻ ㊼ ㊽ ㊾ ㊿

### SQUAD MARKINGS

① ② ③ ④ ⑤ ⑥ ⑦ ⑧ ⑨ ⑩ ⑪ ⑫ ⑬ ⑭ ⑮ ⑯ ⑰ ⑱ ⑲ ⑳ ㉑ ㉒ ㉓ ㉔ ㉕ ㉖ ㉗ ㉘ ㉙ ㉚ ㉛ ㉜ ㉝ ㉞ ㉟ ㊱ ㊲ ㊳ ㊴ ㊵ ㊶ ㊷ ㊸ ㊹ ㊺ ㊻ ㊼ ㊽ ㊾ ㊿

### CAMPAIGN BADGES

① ② ③ ④ ⑤ ⑥ ⑦ ⑧ ⑨ ⑩ ⑪ ⑫ ⑬ ⑭ ⑮ ⑯ ⑰ ⑱ ⑲ ⑳ ㉑ ㉒ ㉓ ㉔ ㉕ ㉖ ㉗ ㉘ ㉙ ㉚ ㉛ ㉜ ㉝ ㉞ ㉟ ㊱ ㊲ ㊳ ㊴ ㊵ ㊶ ㊷ ㊸ ㊹ ㊺ ㊻ ㊼ ㊽ ㊾ ㊿

**BASE** BALTHASAR GOLD**SHADE** REIKLAND FLESHSHADE**LAYER** GEHENNA'S GOLD**LAYER** RUNEFANG STEEL**BASE** MACRAGGE BLUE**SHADE** NULN OIL**LAYER** CALGAR BLUE**LAYER** FENRISIAN GREY**BASE** ZANDRI DUST**SHADE** SERAPHIM SEPIA**LAYER** USHARTI BONE**LAYER** SCREAMING SKULL**BASE** BUGMAN'S GLOW**SHADE** REIKLAND FLESHSHADE**LAYER** CADIAN FLESHSTONE**LAYER** FLAYED ONE FLESH**BASE** CALEDOR SKY**LAYER** TEMPLE GUARD BLUE**EDGE** BAKARRÖTH BLUE**LAYER** WHITE SCAR**BASE** MEPHISTON RED**SHADE** CARROBURG CRIMSON**LAYER** WILD RIDER RED**BASE** ABADON BLACK**LAYER** DAWNSTONE**LAYER** ADMINISTRATUM GREY

## BLOOD ANGELS

### BLOOD ANGELS

HELLBLASTERS

CHAPTER MARKINGS

COMPANY MARKINGS

SQUAD MARKINGS

CAMPAIGN BADGES



**BASE** ABADDON BLACK

**LAYER** DAWNSTONE

**LAYER** ADMINISTRATUM GREY

**BASE** MEPHISTON RED

**SHADE** CARROBURG CRIMSON

**LAYER** EVIL SUNZ SCARLET

**LAYER** FIRE DRAGON BRIGHT



## DARK ANGELS

### DARK ANGELS

HELLBLASTERS

CHAPTER MARKINGS

SQUAD MARKINGS

CAMPAIGN BADGES



**BASE** CALIBAN GREEN

**SHADE** NULN OIL

**LAYER** WARPSTONE GLOW

**LAYER** MOOT GREEN

**BASE** ZANDRI DUST

**SHADE** SERAPHIM SEPIA

**LAYER** USHASTI BONE

**LAYER** SCREAMING SKULL



## SPACE WOLVES

### SPACE WOLVES

HELLBLASTERS

GREAT COMPANY MARKINGS

PLUMES & HONOUR MARKINGS

SAGA MARKINGS



**BASE** AVERLAND SUNSET

**SHADE** CASANDORA YELLOW

**LAYER** YRIEL YELLOW

**EDGE** DORN YELLOW

**BASE** THE FANG

**SHADE** AGRAX EARTHSHADE

**LAYER** RUSS GREY

**LAYER** FENRISIAN GREY



## 7 POXWALKERS

7 a x2



7 b x2



7 c x2



7 d x2



7 e x2



7 f x2



7 g x2



7 h x2



7 i x2



7 j x2



# 8 PLAGUE MARINES

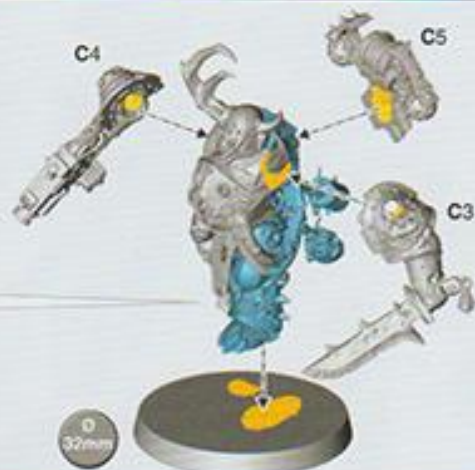
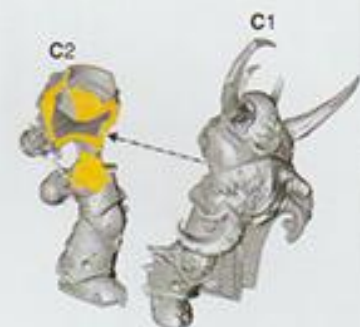
8 a



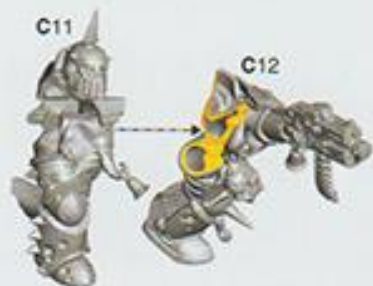
8 b



8 c

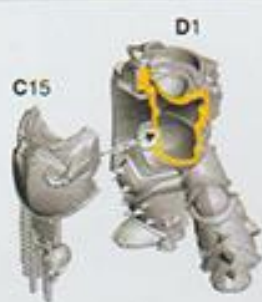
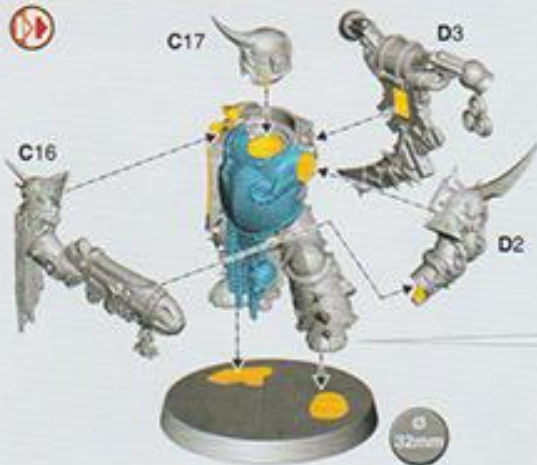


8 d

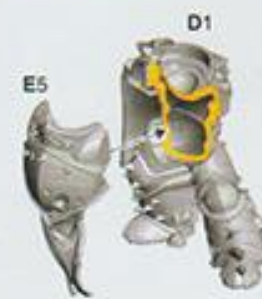




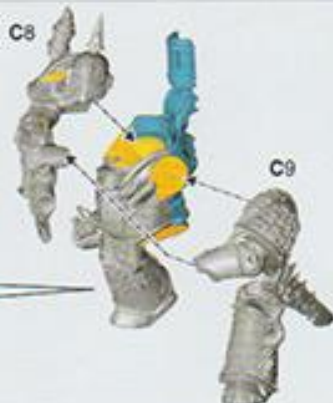
8 e



8 f



8 g



8 a

8 b

8 c

8 d

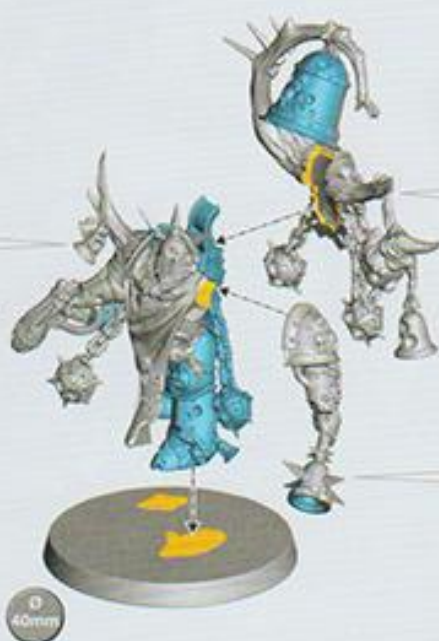
8 e

8 f

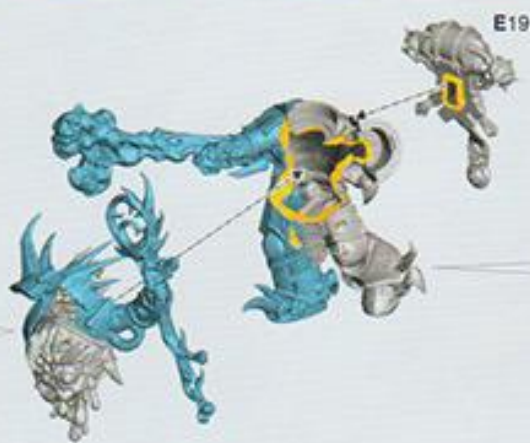
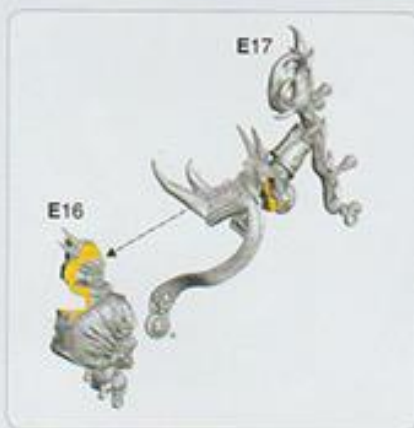
8 g

# 9 NOXIOUS BLIGHTBRINGER, MALIGNANT PLAGUECASTER & LORD OF CONTAGION

## 9 a NOXIOUS BLIGHTBRINGER



## 9 b MALIGNANT PLAGUECASTER



## 9 c



**9 d** DEATH GUARD LORD OF CONTAGION



**9 e**



**9 f**



**9 e**



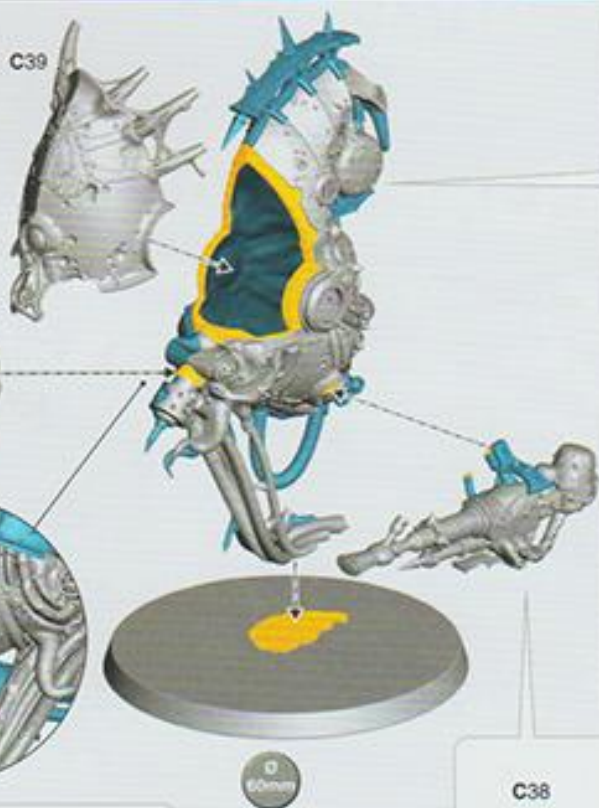
**9 f**



**9 g**

# WARD FOETID BLOAT-DRONE

C39



C30

C31



C35

C36



C38

C37



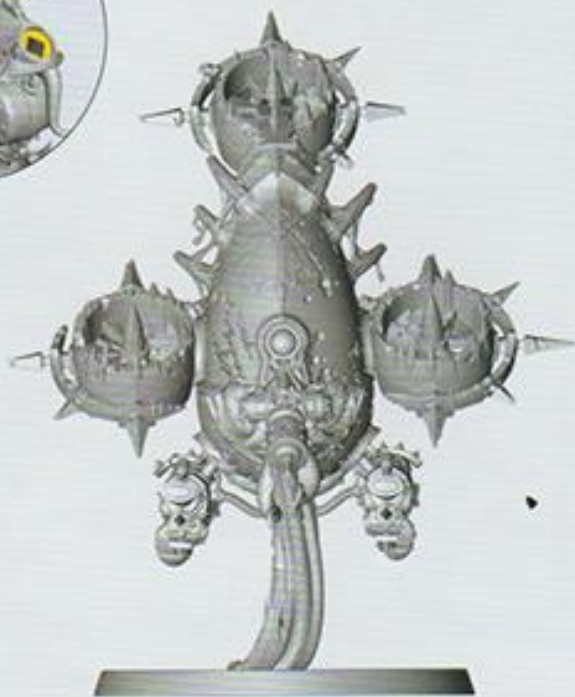
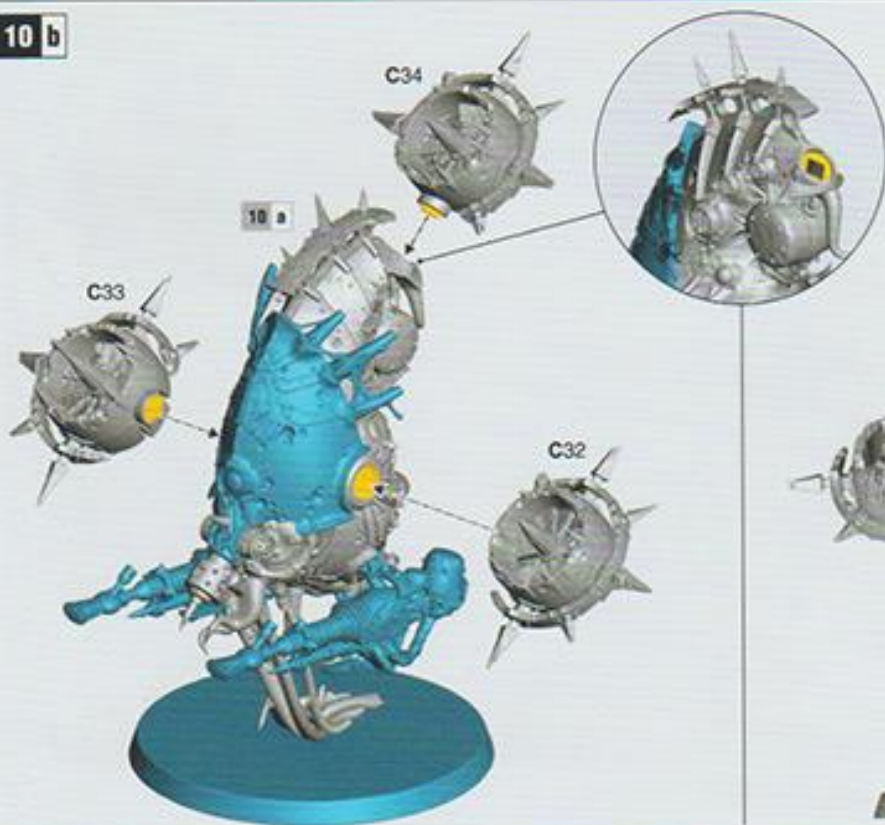
10 b

C34

10 a

C33

C32



## DEATH GUARD

### DEATH GUARD LORD OF CONTAGION



- BASE CELESTRA GREY
- SHADE DRAKENHOF NIGHTSHADE
- SHADE COELIA GREENSHADE
- LAYER WHITE SCAR
- BASE LEADBELCHER
- SHADE NULN OIL
- SHADE AGRAX EARTHSHADE
- LAYER RUNEFANG STEEL
- BASE SCREAMER PINK
- SHADE NULN OIL
- LAYER TUSKGOR FUR
- LAYER KISLEV FLESH
- BASE NAGGAROTH NIGHT
- SHADE NULN OIL
- SHADE XEREUS PURPLE
- LAYER SLAANESH GREY



### DEATH GUARD PLAGUE MARINES



- BASE DEATH GUARD GREEN
- SHADE ATHONIAN CAMOSHADE
- LAYER OGRYN CAMO
- EDGE KRIED KHAKI
- BASE KHORNE RED
- SHADE NULN OIL
- LAYER TROLL SLAYER ORANGE
- LAYER TAU LIGHT OCHRE
- BASE BALTHASAR GOLD
- SHADE AGRAX EARTHSHADE
- LAYER SKULLCRUSHER BRASS
- LAYER RUNEFANG STEEL



### DEATH GUARD POXWALKERS



- BASE ABADDON BLACK
- SHADE DARK REAPER
- LAYER RUSS GREY
- LAYER FENRISIAN GREY
- BASE BUGMAN'S GLOW
- SHADE DRUCHII VIOLET
- LAYER GENESTEALER PURPLE
- LAYER SLAANESH GREY
- BASE BUGMAN'S GLOW
- LAYER CADIAN FLESHSTONE
- LAYER KISLEV FLESH
- SHADE ATHONIAN CAMOSHADE

