



Free Downloads of Build Instructions,  
Assembly Booklets & How To Guides

**BuildInstructions.com**

## COMPONENTS LIST

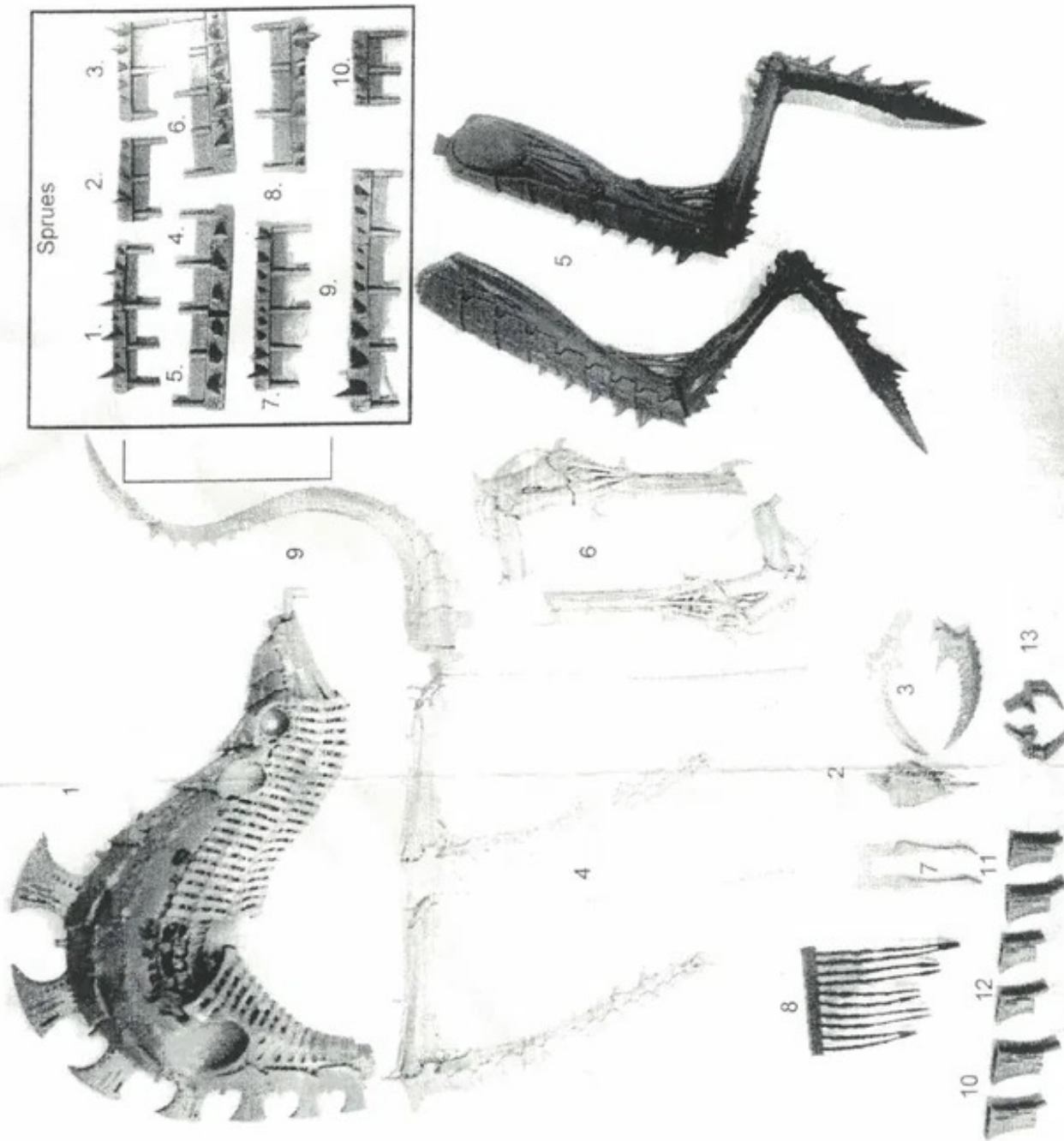
1. Main Body
2. Head
3. Mandibles
4. Forearms
5. Legs
6. Bio Cannons
7. Leg Supports
8. Lash Whips
9. Tail
10. Large Funnels
11. Medium Funnels
12. Small Funnels
13. Claws

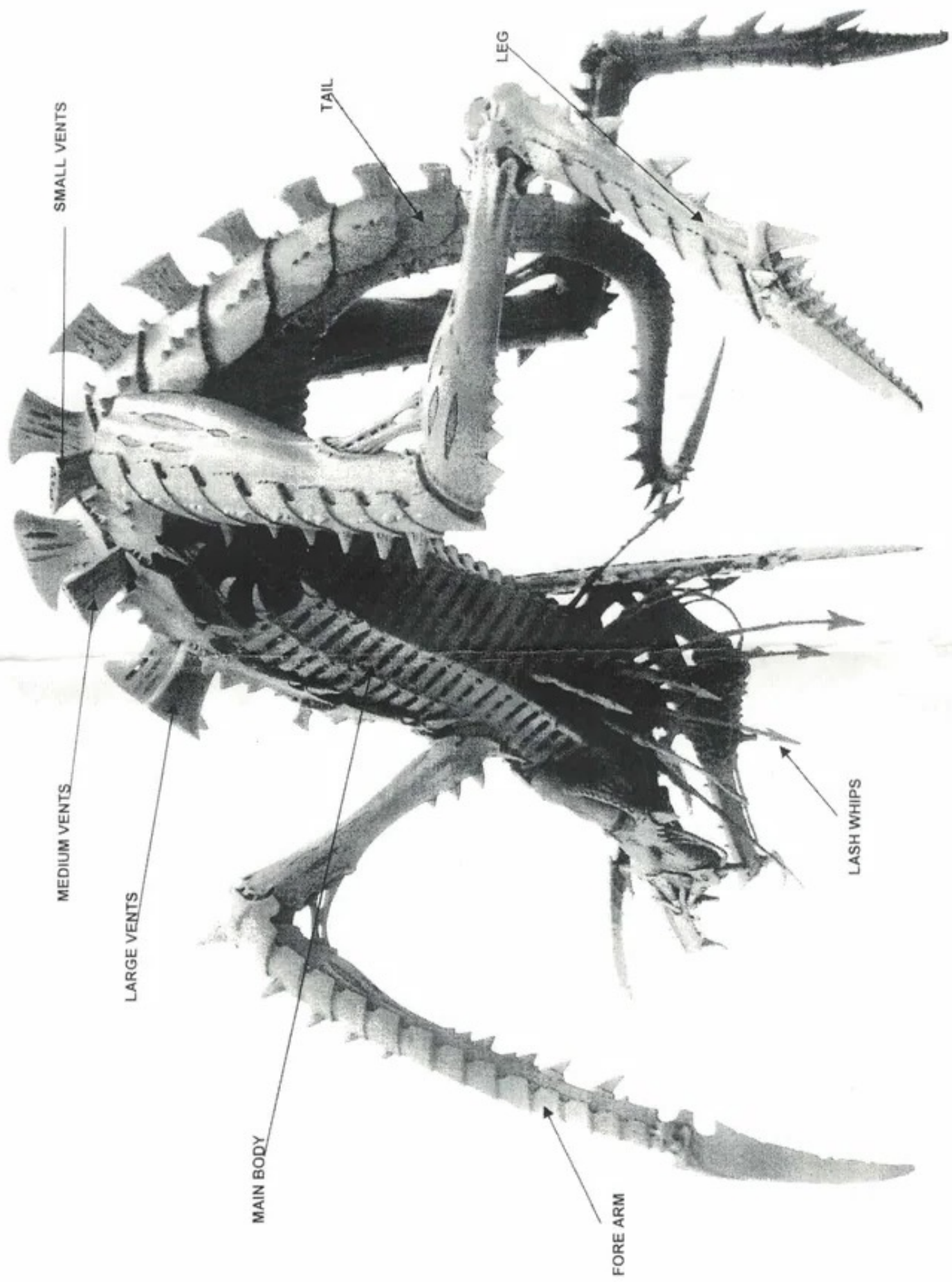
This kit contains all the pieces required to produce the Tyrannid Hierophant. To glue the resin pieces together use Citadel Super Glue.

**NOTE:** We have cast this kit using the most advanced techniques and the best quality resin, but due to the nature of the casting process your model may contain very slight air bubbles. These can easily be filled with model filler or super glue. Any slight warpage of thin parts can easily be corrected by immersing the part in hot tap water for about 1 minute then carefully bending it back into shape.

### THIS IS NOT A TOY

Not suitable for children under 15 years of age.  
**WARNING:** Resin dust can be harmful if inhaled. Always wear a dust mask or respirator when sanding or sawing resin parts.





SMALL VENTS

MEDIUM VENTS

LARGE VENTS

MAIN BODY

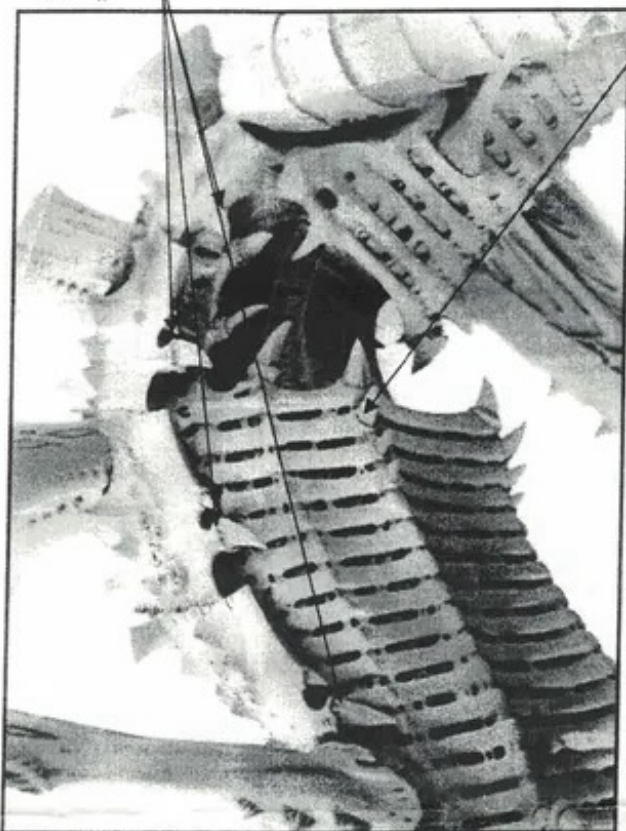
TAIL

LEG

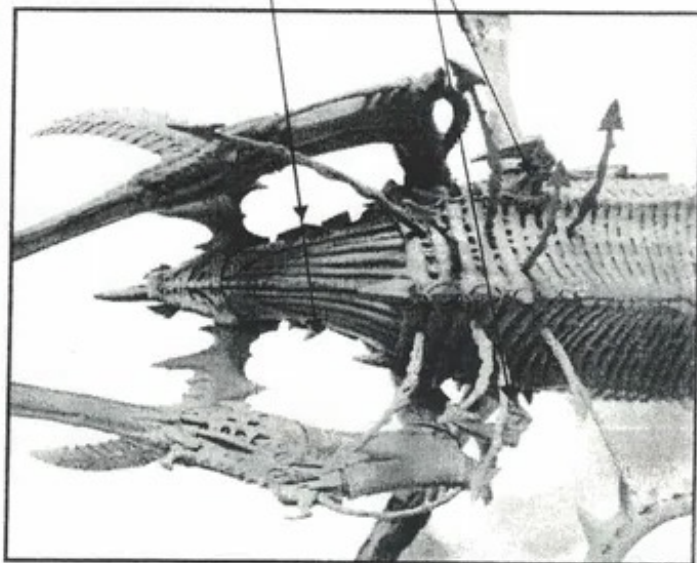
FORE ARM

LASH WHIPS

**SPRUE 6**  
Left hand side along the plate edges



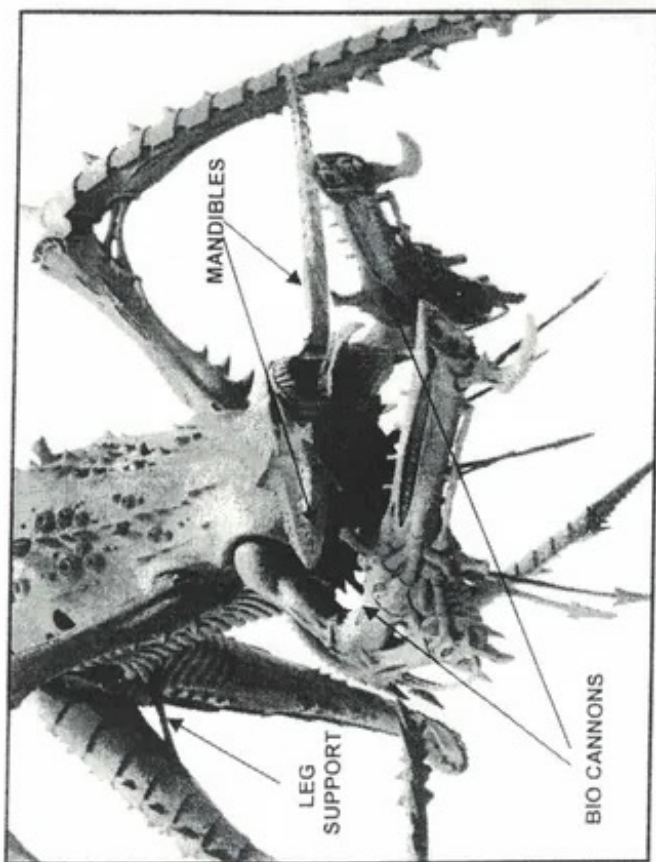
**SPRUE 5**  
Left hand side, Rear of front rib section



**SPRUE 10**  
Neck

**CLAWS**

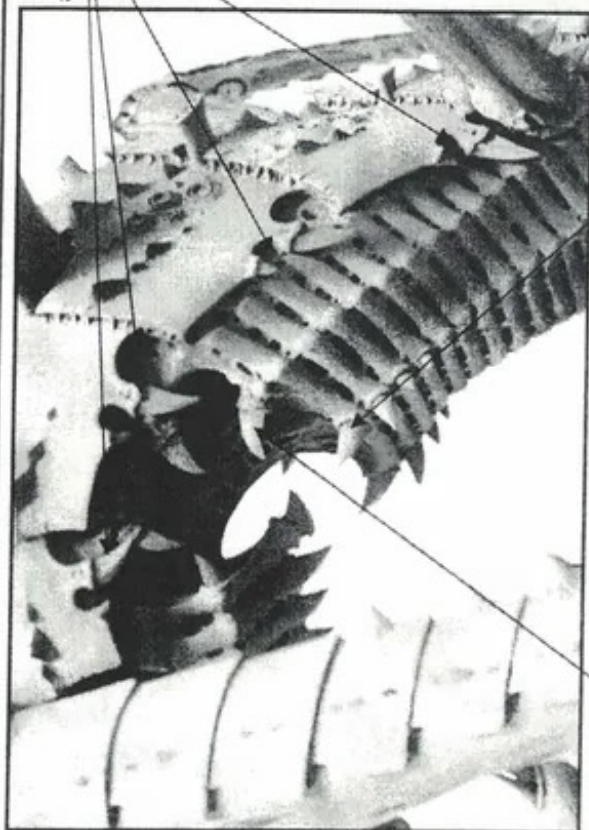
**SPRUE 1**  
Right hand side along the plate edges



**MANDIBLES**

**LEG SUPPORT**

**BIO CANNONS**



**SPRUE 4**

Right hand side, Edge of Cavity

**SPRUE 2**

Right hand side, Rear of front rib section

Due to the weight of the model and the nature of the legs, we recommend that you pin this figure onto a base.

If it is not mounted onto a base, you may experience a problem of the legs bending under the weight of the body.

Please note that a base is not supplied with this model.

