

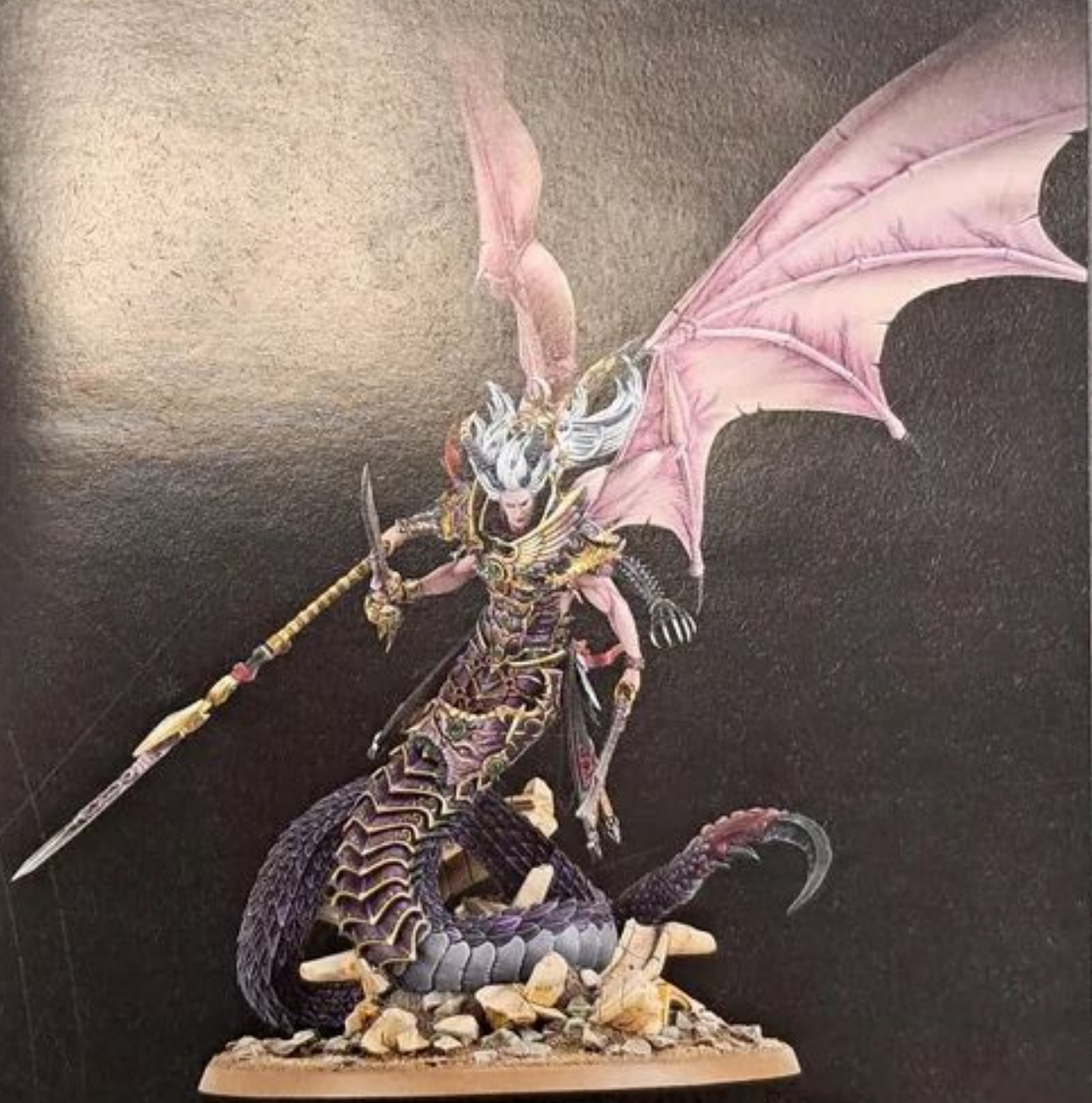


Free Downloads of Build Instructions,  
Assembly Booklets & How To Guides

**BuildInstructions.com**

# WARHAMMER

## THE HORUS HERESY



EMPEROR'S CHILDREN

# FULGRIM TRANSFIGURED





- |                  |                          |                      |                        |
|------------------|--------------------------|----------------------|------------------------|
| 1. Right Wing    | 15. Sash                 | 29. Torso            | 43. Left Fabric        |
| 2. Right Talon 1 | 16. Spear Counter-weight | 30. Lower Right Arm  | 44. Serpent Upper Body |
| 3. Right Talon 2 | 17. Upper Right Arm      | 31. Charm            | 45. Armour Plate       |
| 4. Right Talon 3 | 18. Sword Option         | 32. Hand Guard       | 46. Serpent Body Mid   |
| 5. Right Talon 4 | 19. Head                 | 33. Sword            | 47. Diorama Base       |
| 6. Right Talon 5 | 20. Right Horn           | 34. Legion Symbol    | 48. Serpent Tail       |
| 7. Left Wing     | 21. Left Horn            | 35. Upper Left Arm   | 49. Venom Sac          |
| 8. Left Talon 1  | 22. Crown                | 36. Left Hand        | 50. Barb               |
| 9. Left Talon 2  | 23. Pauldron Sash        | 37. Lower Left Arm   | 51. Sigil              |
| 10. Left Talon 3 | 24. Right Pauldron       | 38. Lower Left Sword | 52. Fragment           |
| 11. Left Talon 4 | 25. Talisman             | 39. Right Feathers   | 53. Rock               |
| 12. Left Talon 5 | 26. Left Pauldron        | 40. Lower Sash       |                        |
| 13. Spear Shaft  | 27. Opal Gemstone        | 41. Left Feathers    |                        |
| 14. Spear Tip    | 28. Cut Gemstone         | 42. Right Fabric     |                        |



## ASSEMBLY LEGEND

Parts for Assembly



Glue Contact Area



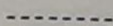
Shim for Removal



Assembly Option



Insert



Sub-assembly Stage Number



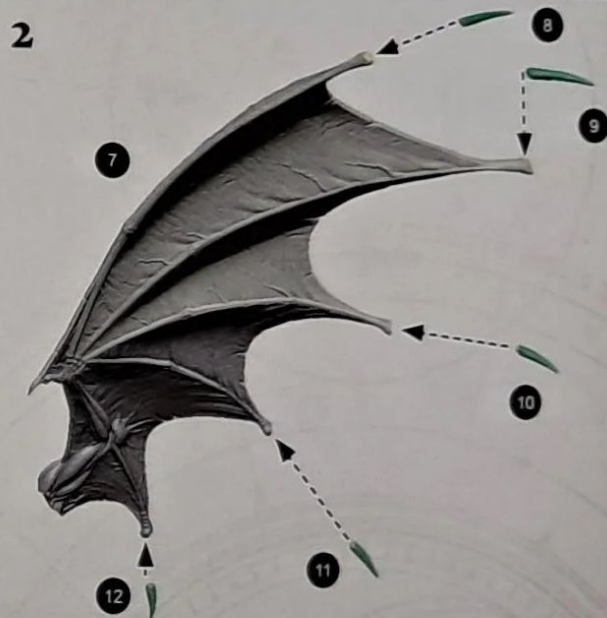
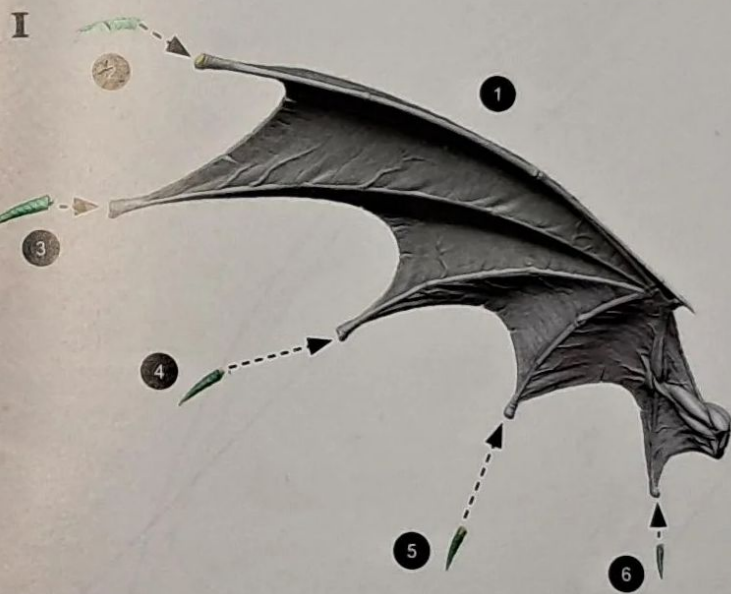
Reverse Angle



## PREPARING THE MODEL FOR ASSEMBLY

Before assembling the model, wash each part thoroughly with an abrasive brush, such as a toothbrush, to remove any model release agent that may still be on the surface of the parts. Then, remove any excess resin such as mould lines, casting gates, vents and shims. For a more detailed guide to working with resin models, go to the Downloads section of the Warhammer Community website.

This kit contains all the pieces required to construct Fulgrim Transfigured. To glue the resin pieces together, use super glue.



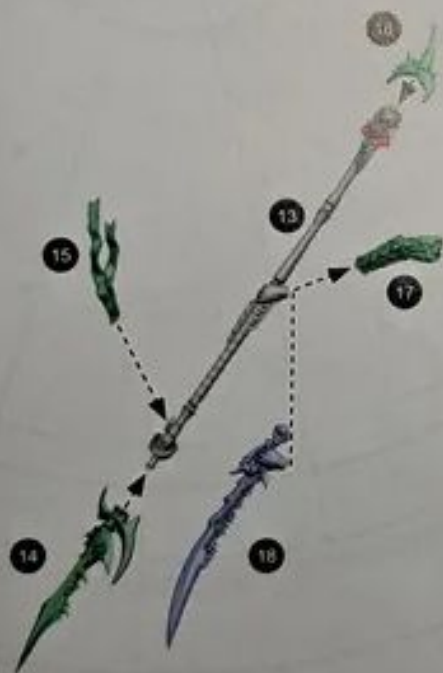
4



5



6



7



8

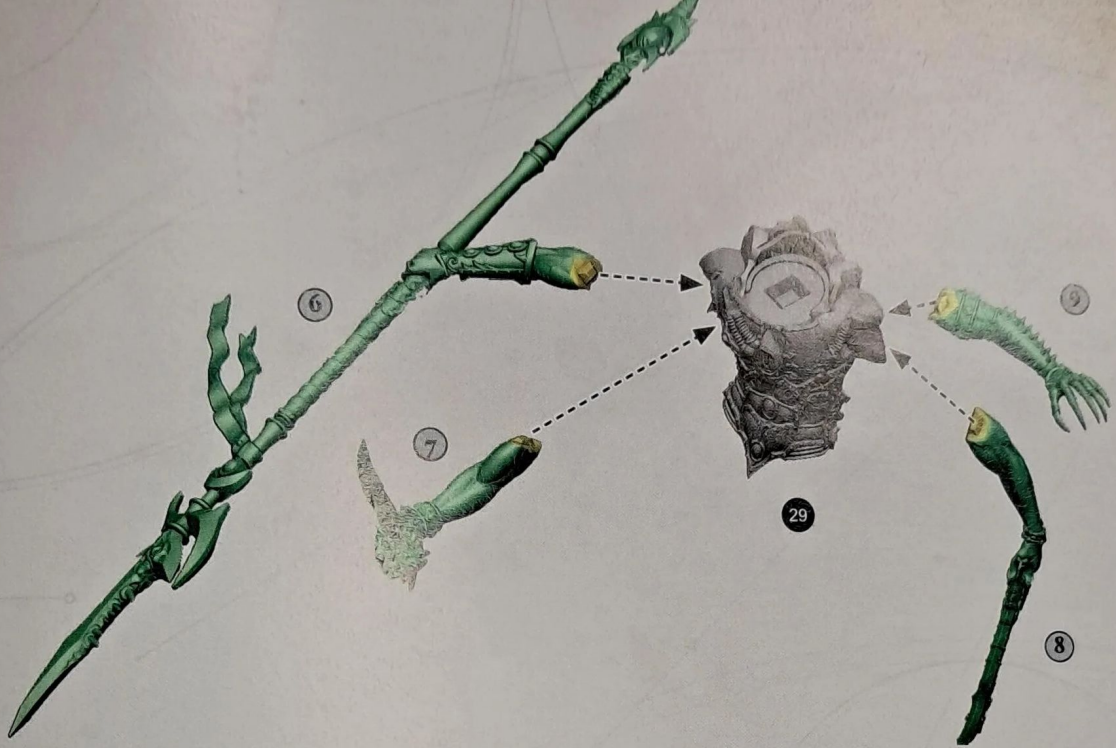


9





10



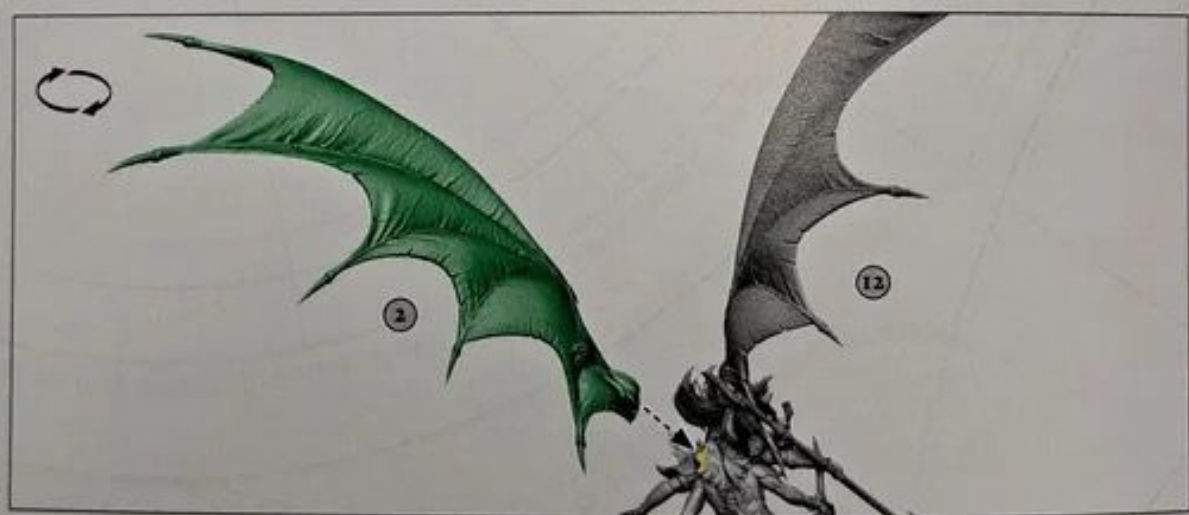
11



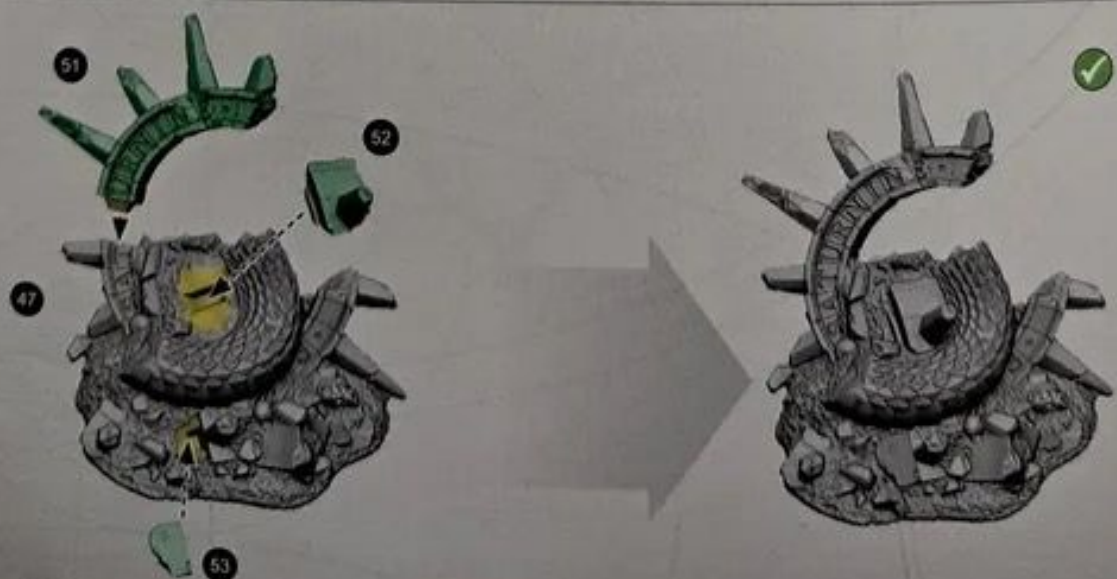
12



13

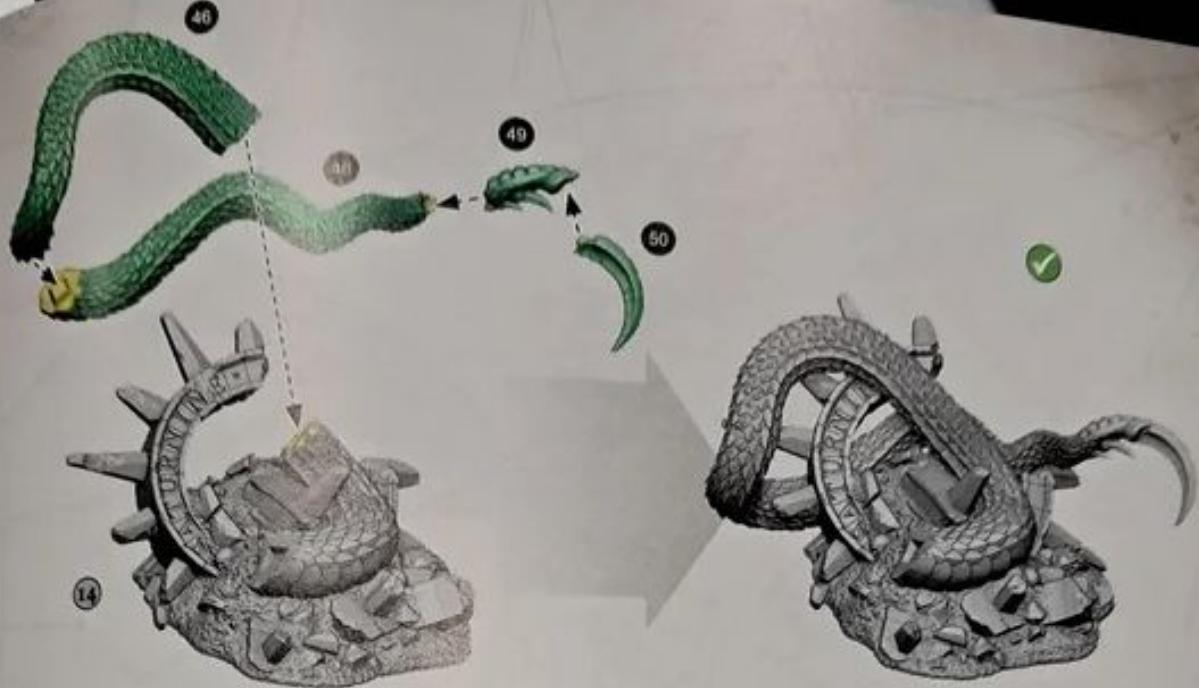


14





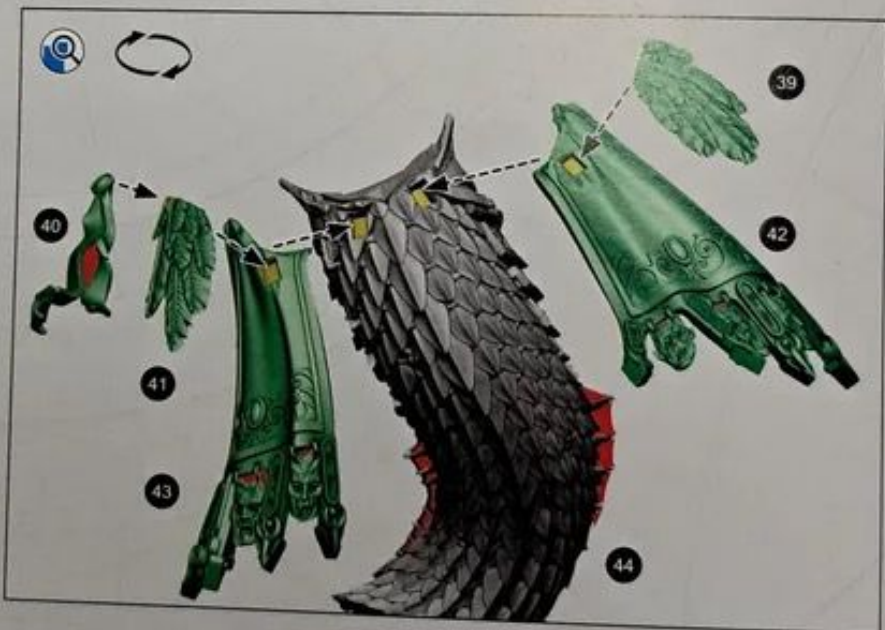
15



16







If you need to contact the Forge World Customer Service team regarding this model, you can get in touch via email - [forgeworld@gwplc.com](mailto:forgeworld@gwplc.com) - or call:  
 0115 900 4995 within the UK  
 011 44 115 900 4995 from the USA and Canada  
 0011 44 115 900 4995 from Australia  
 00 44 115 900 4995 from Europe and the rest of the world.

© Copyright Games Workshop Limited 2023. Warhammer: The Horus Heresy, Citadel, Forge World, Games Workshop, GW, Warhammer, the 'winged-hammer' Warhammer logo, and all associated logos, names, races, vehicles, weapons and characters are either ® or TM, and/or © Games Workshop Limited. All Rights Reserved.

**Forge World**  
**MINIATURES**

