



Free Downloads of Build Instructions,
Assembly Booklets & How To Guides

BuildInstructions.com

PLAGUE MONKS



READ THIS FIRST: Before assembling your model kit please read through the instructions in this booklet carefully. A pair of plastic cutters is required to remove the plastic components in this kit from their frame. We advise using a mouldline scraping tool to clean up the parts. To assemble your model you will need plastic glue. Games Workshop sells Citadel Fine Detail Cutters, Citadel Mouldline Remover and Citadel Plastic Glue, but does not recommend these products for use by children under the age of 16 without adult supervision.



À LIRE EN PREMIER : Avant de vous lancer dans l'assemblage de ce kit, veuillez lire attentivement les instructions de ce livret. Une pince coupante est requise pour détacher chaque élément de sa grappe. Nous vous recommandons l'utilisation d'un grattoir pour ébarber les éléments. Pour l'assemblage, vous aurez également besoin de colle plastique. Games Workshop commercialise les Pinces de Précision Citadel, l'Ébarboir Citadel et la Colle Plastique Citadel, mais n'en recommande pas l'utilisation pour des enfants de moins de 16 ans sans la supervision d'un adulte.



LEER ANTES DE MONTAR: Antes de montar el contenido de este kit, lee estas instrucciones cuidadosamente. Te harán falta unas tenazas para plástico a fin de separar las piezas de la matriz. También aconsejamos una herramienta para rebabas a fin de limpiar cada pieza. Para montar la miniatura necesitarás pegamento para plástico. Games Workshop vende Tenazas Citadel, Herramientas para rebabas Citadel y Pegamento para plástico Citadel, pero no recomienda estos productos a menores de 16 años sin la supervisión de un adulto.

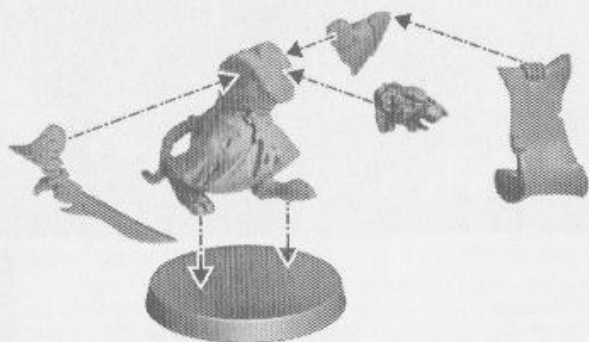


LIES DIES ZUERST: Bitte lies diese Anleitung sorgfältig, bevor du mit dem Zusammenbau deines Modells beginnst. Du benötigst einen Kunststoffseitenschneider, um die Kunststoffbauteile aus dem Gussrahmen herauszutrennen, und Kunststoffkleber, um die Miniatur zusammenzubauen. Außerdem empfehlen wir, die Bauteile vorher mit einem Gussgratentferner zu säubern. Games Workshop bietet Präzisions-Kunststoffseitenschneider von Citadel sowie Citadel-Kunststoffkleber an, empfiehlt aber, dass Kinder unter 16 Jahren diese nur unter Aufsicht eines Erwachsenen benutzen.

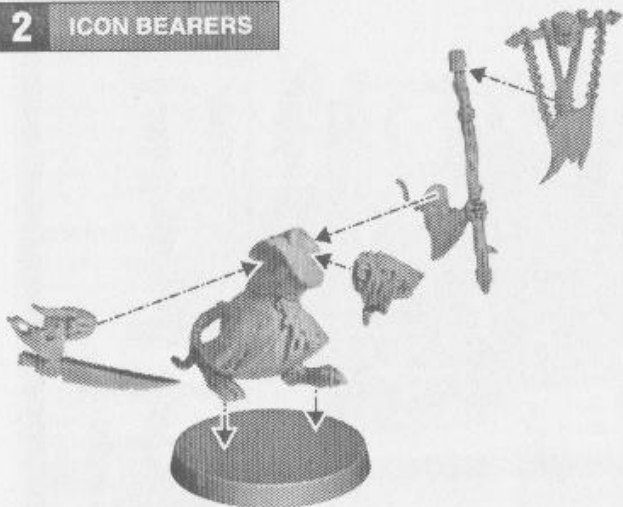


LEGGI PRIMA QUESTO: prima di assemblare il tuo modello, leggi le istruzioni di questo libretto con attenzione. Sono necessarie un paio di tronchesine per plastica per staccare i componenti dai loro sprue. Consigliamo di usare un attrezzo apposito per pulire i componenti. Per assemblare il modello avrai bisogno di colla per plastica. Games Workshop vende Tronchesine di precisione Citadel, Attrezzo per ripulire Citadel e Colla per plastica Citadel, ma non consiglia questi prodotti ad un pubblico minore di 16 anni senza la supervisione di un adulto.

1 BRINGER-OF-THE-WORD



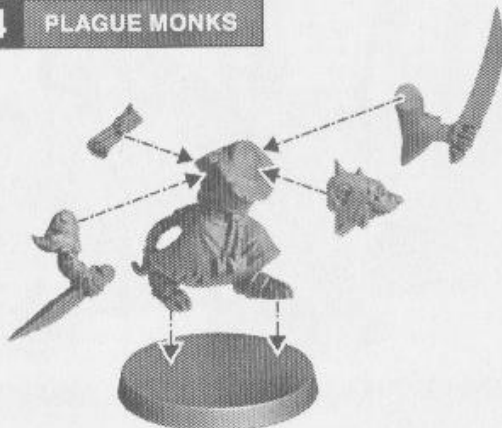
2 ICON BEARERS



3 PLAGUE HARBINGERS



4 PLAGUE MONKS



PLAGUE MONKS



MELEE WEAPONS

Foetid Blade

Woe-stave

Range	Attacks	To Hit	To Wound	Rend	Damage
1"	2	4+	4+	-	1
2"	1	4+	5+	-	1

1"

2

4+

4+

-

1

2"

1

4+

5+

-

1

DESCRIPTION

A unit of Plague Monks has 5 or more models. Some units of Plague Monks are armed with a pair of Foetid Blades, while others attack with a Foetid Blade in one claw and a Woe-stave in the other.

BRINGER-OF-THE-WORD

The leader of this unit is a Bringer-of-the-Word. Some Bringers-of-the-Word choose to wield a Foetid Blade and carry a Plague Scroll; others bear a Book of Woes in one claw and a Foetid Blade in the other.

ICON BEARERS

Models in this unit may be Icon Bearers. Some Icon Bearers carry Contagion Banners, while others sport an Icon of Pestilence.

PLAGUE HARBINGERS

Models in this unit may be Plague Harbingers. Some Plague Harbingers carry clanging Doom Gongs, whilst others go to war with dreaded Bale-chimes.

ABILITIES

Foetid Blades: You can re-roll all failed hit rolls for models that are armed with more than one Foetid Blade.

Frenzied Assault: On a turn in which they charge, all models in this unit make 3 attacks with their Foetid Blades rather than 2.

Plague Scroll: Once per battle, in your hero phase, a Bringer-of-the-Word with a Plague Scroll can chant a vile passage to weaken his foes with fevers and poxes. Pick an enemy unit within 13" of the Bringer-of-the-Word. Until your next hero phase, you can re-roll all wound rolls of 1 made against that unit.

Book of Woes: Once per battle, in your hero phase, a Bringer-of-the-Word with a Book of Woes can read aloud a corrupt prayer and release a stinking blast of diseased fury. Roll a dice for every unit within 13" of the Bringer-of-the-Word. On the roll of a 4 or more, that unit suffers a mortal wound. **NURGLE** units are only affected on the roll of a 6.

Icon of Pestilence: If a unit contains one or more Icons of Pestilence, the Plague Monks are infected with highly diseased blood. If an infected Plague Monk is slain in the combat phase, roll a dice; on a 6 the attacking unit suffers a mortal wound.

Contagion Banner: If a unit contains one or more Contagion Banners, then in one of your hero phases the Plague Monks can use their power to bless their weapons with even more contagious diseases. Until your next hero phase, whenever you roll a 6 or more to wound for this unit, roll an additional dice. On the roll of another 6, the target unit suffers a mortal wound in addition to any other damage.

Doom Gong: A Doom Gong causes those that hear it to stumble and vomit. Subtract 1 from the run or charge rolls of all enemy units within 12" of at least one unit that includes any Doom Gongs.

Bale-chime: If a unit includes one or more Bale-chimes, the clamour causes the enemy's armour to rust and rot. Each wound roll of 6 or more you roll when attacking with such a unit is resolved with a Rend Characteristic of -1.

KEYWORDS

CHAOS, SKAVEN, NURGLE, PESTILENS, PLAGUE MONKS