



Free Downloads of Build Instructions,
Assembly Booklets & How To Guides

BuildInstructions.com

START COLLECTING!

SKINKS



! · READ THIS FIRST · À LIRE EN PREMIER · LEER ANTES DE MONTAR
· LIES DIES ZUERST · LEGGI PRIMA QUESTO

ENG BEFORE ASSEMBLING YOUR MINIATURES, PLEASE READ THROUGH THE INSTRUCTIONS IN THIS BOOKLET CAREFULLY. A pair of plastic cutters is required to remove the plastic components in this kit from their frame. We advise using a mouldline scraping tool to clean up the parts. To assemble your model you will need plastic glue. Games Workshop sells Citadel Fine Detail Cutters, Citadel Mouldline Remover and Citadel Plastic Glue, but does not recommend these products for use by children under the age of 16 without adult supervision.

FRE AVANT D'ASSEMBLER VOS FIGURINES, VEUILLEZ LIRE ATTENTIVEMENT LES INSTRUCTIONS DE CE LIVRET. Une pince coupante est requise pour détacher chaque élément de sa grappe. Nous vous recommandons l'utilisation d'un grattoir pour ébarber les éléments. Pour l'assemblage, vous aurez également besoin de colle plastique. Games Workshop commercialise les Pinces de Précision Citadel, l'Ébarboir Citadel et la Colle Plastique Citadel, mais n'en recommande pas l'utilisation pour des enfants de moins de 16 ans sans la supervision d'un adulte.

SPA POR FAVOR, LEE CUIDADOSAMENTE ESTE LIBRETO DE INSTRUCCIONES ANTES DE EMPEZAR A MONTAR LAS MINIATURAS. Te harán falta unas tenazas para plástico a fin de separar las piezas de la matriz. También aconsejamos una herramienta para rebabas a fin de limpiar cada pieza. Para montar la miniatura necesitarás pegamento para plástico. Games Workshop vende Tenazas Citadel, Herramientas para rebabas Citadel y Pegamento para plástico Citadel, pero no recomienda estos productos a menores de 16 años sin la supervisión de un adulto.

GER VOR DEM ZUSAMMENBAU DER MINIATUREN BITTE DIE ANWEISUNGEN IN DIESER ANLEITUNG AUFMERKSAM DURCHLESEN. Du benötigst einen Kunststoffseitenschneider, um die Kunststoffbauteile aus dem Gussrahmen herauszutrennen, und Kunststoffkleber, um die Miniatur zusammenzubauen. Außerdem empfehlen wir, die Bauteile vorher mit einem Gussgratentferner zu säubern. Games Workshop bietet Präzisions-Kunststoffseitenschneider von Citadel sowie Citadel-Kunststoffkleber an, empfiehlt aber, dass Kinder unter 16 Jahren diese nur unter Aufsicht eines Erwachsenen benutzen.

ITA PRIMA DI ASSEMBLARE LE TUE MINIATURE LEGGI ATTENTAMENTE TUTTE LE ISTRUZIONI DI QUESTO LIBRETTO. Sono necessarie un paio di tronchesine per plastica per staccare i componenti dai loro sprue. Consigliamo di usare un attrezzo apposito per pulire i componenti. Per assemblare il modello avrai bisogno di colla per plastica. Games Workshop vende Tronchesine di precisione Citadel, Attrezzo per ripulire Citadel e Colla per plastica Citadel, ma non consiglia questi prodotti ad un pubblico minore di 16 anni senza la supervisione di un adulto.

SKINKS

• VENOMBLADE STARHOST • OST STELLAIRE LAME-VENIN • ASTROHUESTE HOJAPONZOÑOSA • STERNENSCHAR DER GIFTKLINGE • SCHIERA SIDERALE LAMA VENEFICA

ENGLISH

ORGANISATION

A Venomblade Starhost consists of the following units:

- 1 Skink Starpriest
- 1 Skinks unit
- 1 Bastiladon
- 1 Terradon Riders unit

ABILITIES

Blessing of the Serpent: *The serpent staff wielded by the Starpriest leader of a Venomblade Starhost is cosmically attuned to the warriors under their command, and with but a single chirruped incantation they can tap into the artefact's power to coat the weapons of their cohorts and creatures in potent venom.*

When the **STARPRIEST** from this battalion uses its Serpent Staff ability, you can pick any number of units from the same battalion that are wholly within 18" of the **STARPRIEST** to be affected by the ability instead of 1 **SERAPHON** unit that is wholly within 12" of the **STARPRIEST**.

FRANÇAIS

ORGANISATION

Un Ost Stellaire Lame-Venin se compose des unités suivantes:

- 1 Skink Starpriest
- 1 unité de Skinks
- 1 Bastiladon
- 1 unité de Terradon Riders

APTITUDES

Bénédition du Serpent: *Le bâton du serpent que manie le Starpriest d'un Ost Stellaire Lame-Venin a une connection cosmique avec les guerriers que commande le prêtre skink, et d'une simple incantation, il peut puiser dans le pouvoir de l'artéfact pour couvrir les armes de leurs cohortes et de leurs créatures d'un puissant venin.*

Quand le **STARPRIEST** de ce bataillon utilise son aptitude Bâton du Serpent, vous pouvez choisir n'importe quel nombre d'unités du même bataillon qui sont entièrement à 18" ou moins du **STARPRIEST** au lieu de 1 unité de **SERAPHON** qui est entièrement à 12" ou moins du **STARPRIEST**.

ESPAÑOL

ORGANIZACIÓN

Astrohueste Hojaponzoñosa consta de las siguientes unidades:

- 1 Skink Starpriest
- 1 unidad de Skinks
- 1 Bastiladon
- 1 unidad de Terradon Riders

HABILIDADES

Bendición de la Sierpe. *El báculo de la serpiente que empuña el líder Starpriest de una Astrohueste Hojaponzoñosa armoniza cósmicamente con los guerreros a su mando, y basta con un susurro para extraer su poder e impregnar de veneno las armas de sus cohortes y criaturas.*

Cuando el **STARPRIEST** de este batallón usa su habilidad Báculo de la serpiente, puedes elegir tantas unidades como quieras del mismo batallón completamente a 18" o menos del **STARPRIEST** para que se vean afectadas por la habilidad, en lugar de 1 unidad **SERAPHON** completamente a 12" o menos del **STARPRIEST**.

DEUTSCH

ORGANISATION

Die Sternenschar der Giftklinge besteht aus den folgenden Einheiten:

- 1 Skink Starpriest
- 1 Einheit Skinks
- 1 Bastiladon
- 1 Einheit Terradon Riders

FÄHIGKEITEN

Segen der Schlange: *Der Schlangenstab dieses Starpriests hat eine kosmische Verbindung zu den Kriegerern unter seinem Kommando, und mit einer Beschwörungsformel zapft er die Macht des Artefakts an, um die Waffen ihrer Kohorten und Kreaturen mit wirksamem Gift zu bedecken.*

Wenn der **STARPRIEST** dieses Bataillons seine Fähigkeit *Schlangenstab* einsetzt, kannst du eine beliebige Anzahl Einheiten desselben Bataillons wählen, die sich vollständig innerhalb von 18" um den **STARPRIEST** befinden, als Ziel der Fähigkeit wählen statt 1 **SERAPHON**-Einheit, die sich vollständig innerhalb von 12" um den **STARPRIEST** befindet.

ITALIANO

ORGANIZZAZIONE

La Schiera Siderale Lama Venefica è formata dalle seguenti unità:

- 1 Skink Starpriest
- 1 unità di Skinks
- 1 Bastiladon
- 1 unità di Terradon Riders

ABILITÀ

Benedizione del Serpente: *il bastone del serpente impugnato dallo Starpriest a capo di una Schiera Siderale Lama Venefica è in sintonia cosmica con i guerrieri sotto il suo comando, e basta un incantesimo appena sussurrato per attingere al potere del manufatto e ricoprire le armi della coorte di un potente veleno.*

Quando lo **STARPRIEST** di questo battaglione usa la sua abilità Bastone del Serpente, puoi scegliere un numero qualsiasi di unità dello stesso battaglione che si trovano interamente entro 18" dallo **STARPRIEST** affinché siano influenzate da quell'abilità invece che 1 unità di **SERAPHON** che si trova interamente entro 12" dallo **STARPRIEST**.

• EXPLANATION OF SYMBOLS • EXPLICATION DES SYMBOLES • EXPLICACIÓN DE SIMBOLOS
 • ERLÄUTERUNG DER SYMBOLE • LEGENDA DEI SIMBOLI



- Choice of parts
- Choix d'éléments
- Modelos de componentes
- Auswahl an Teilen
- Scelta di componenti



- Variant assembly
- Variante d'assemblage
- Variante de montaje
- Bauvariante
- Assemblaggio alternativo



- Repeat process
- Répéter l'étape
- Repetir pasos
- Vorgang wiederholen
- Ripeti il processo



- Stage complete
- Étape terminée
- Paso completado
- Schritt abgeschlossen
- Fase completa

1 SKINK STARPRIEST

1 a

1 b

1 c

1 d

1 e

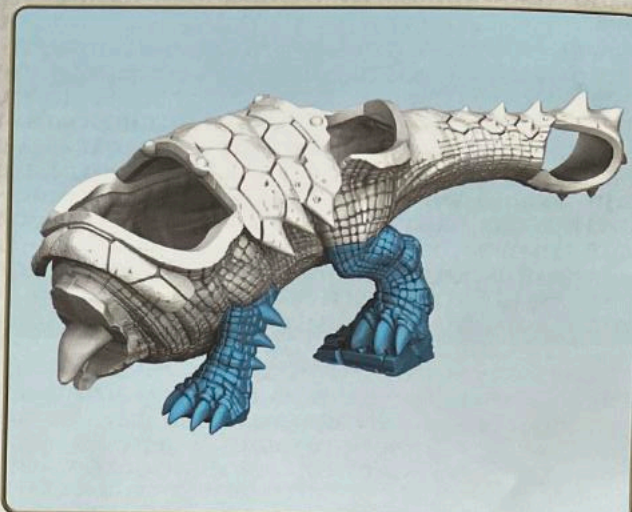
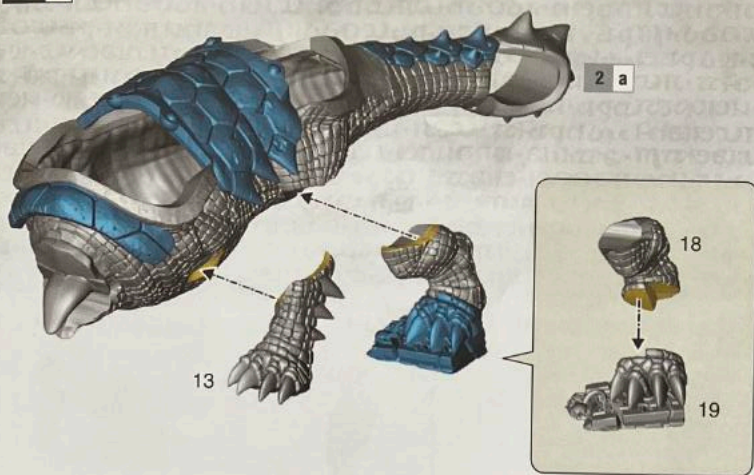
1 f

1 g

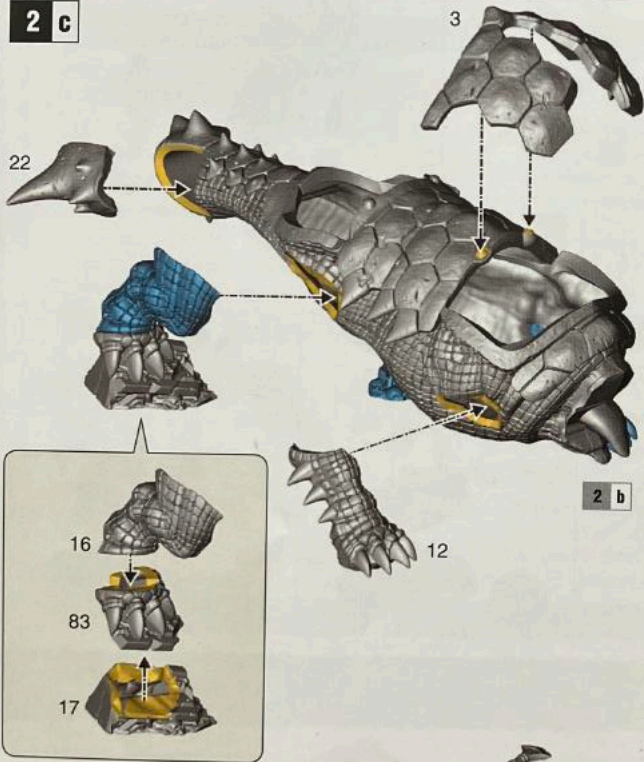
2 BASTILADON

2 a

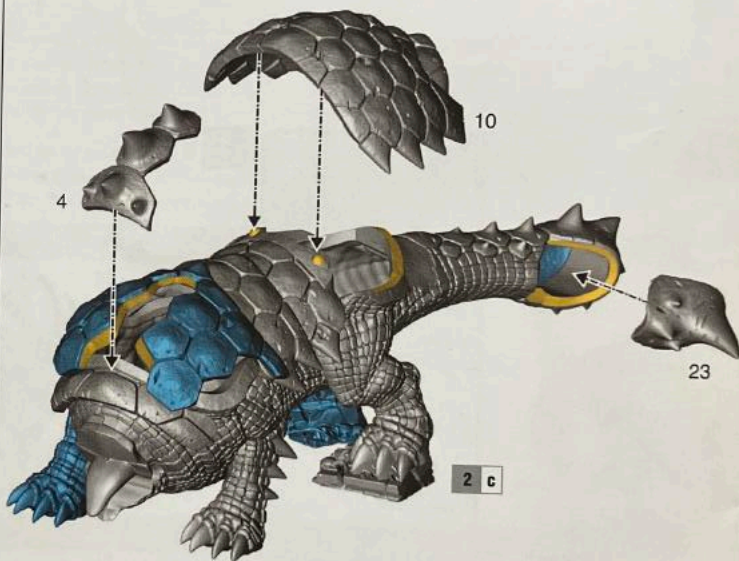
2 b



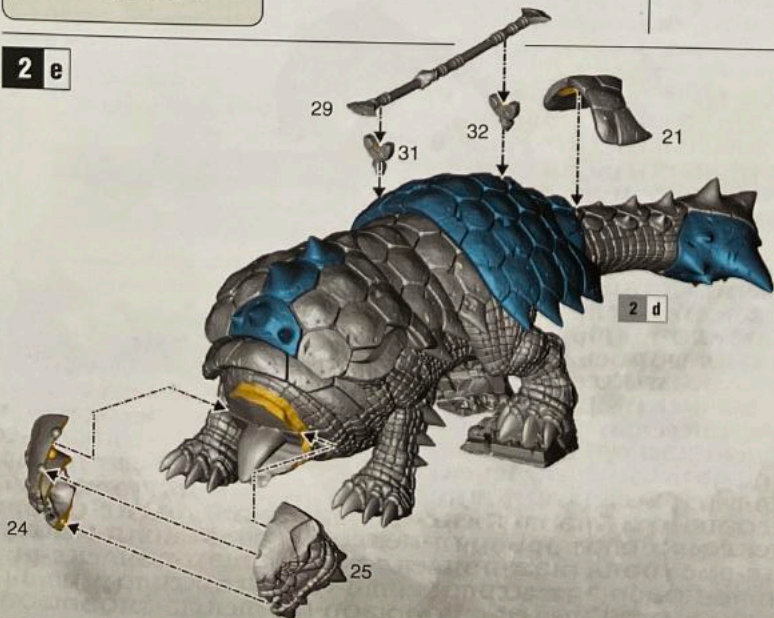
2 c



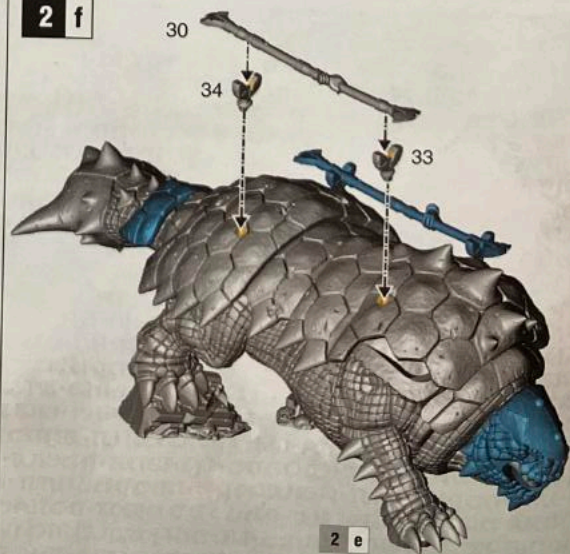
2 d



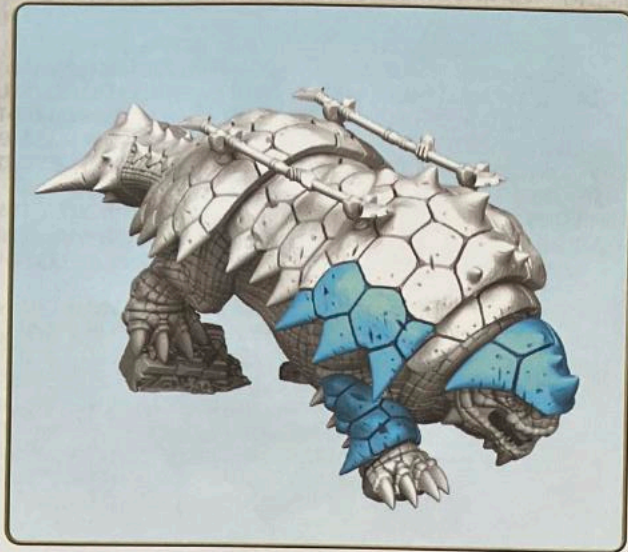
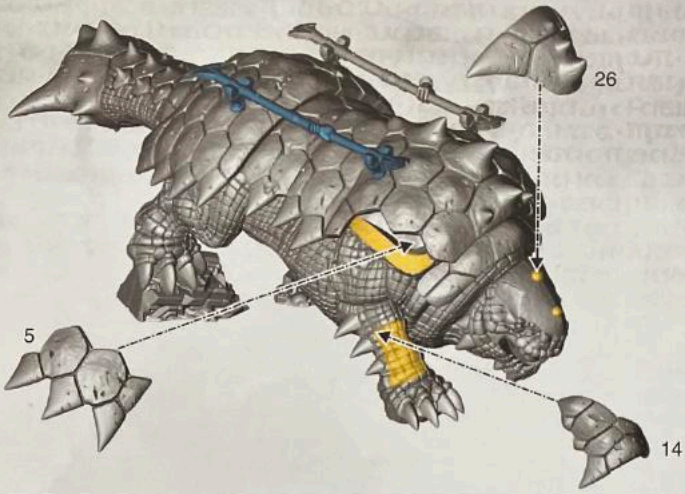
2 e



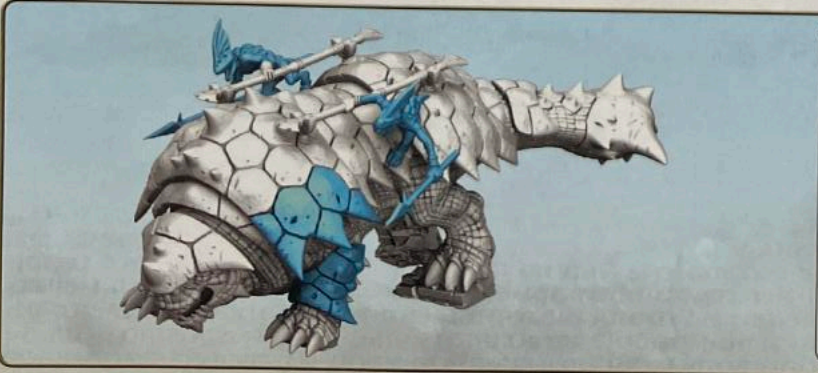
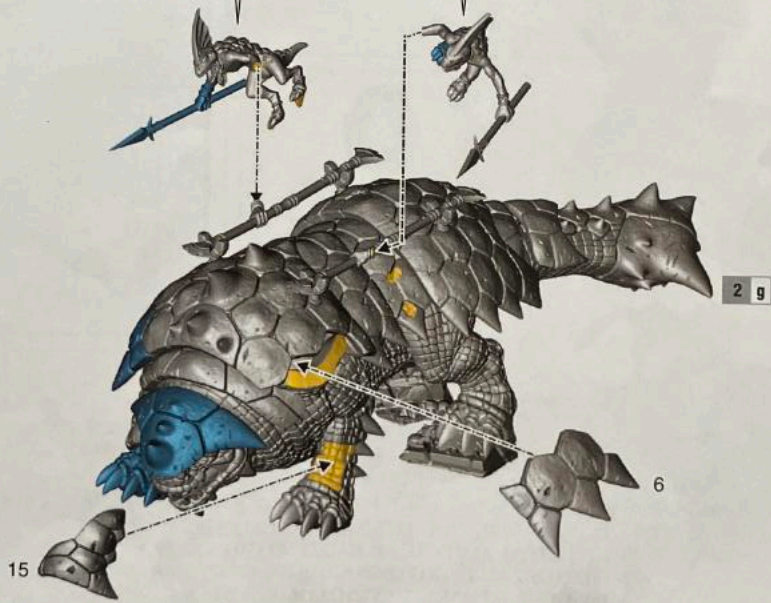
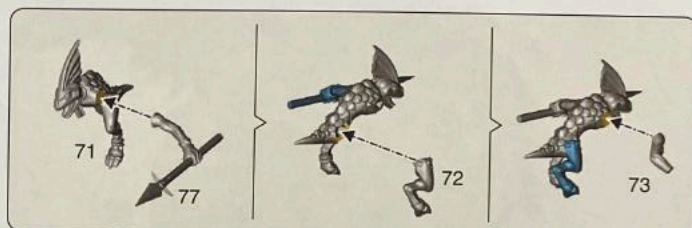
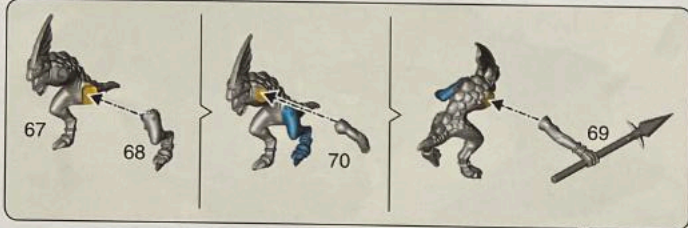
2 f



2 g



2 h



2 i

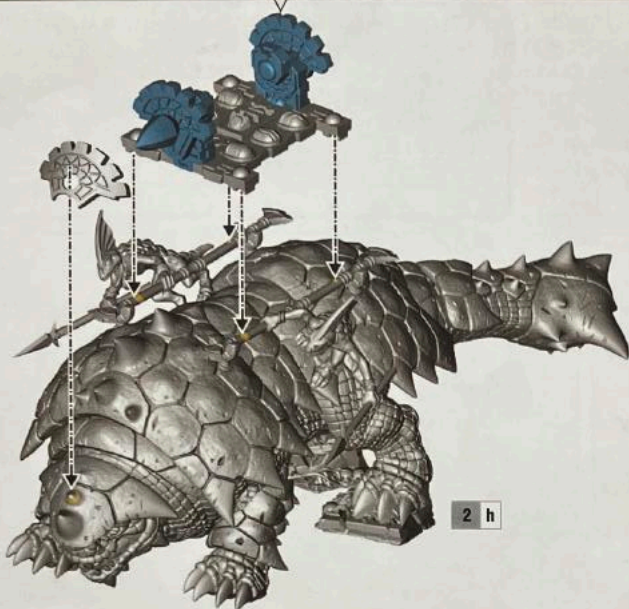
62 63

66

65

64

59



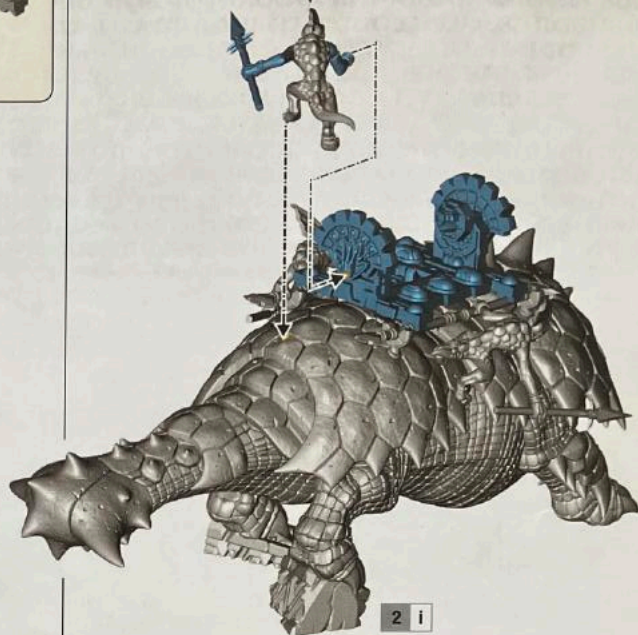
2 h

2 j

79

82

81

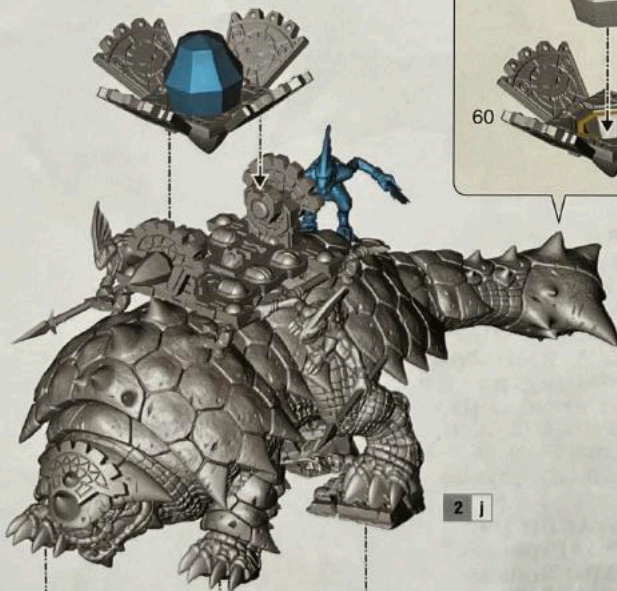


2 i

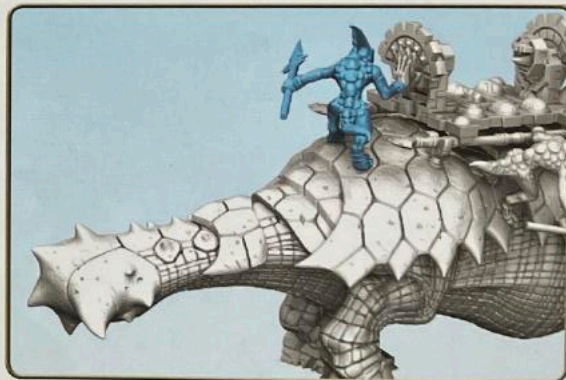
2 k

61

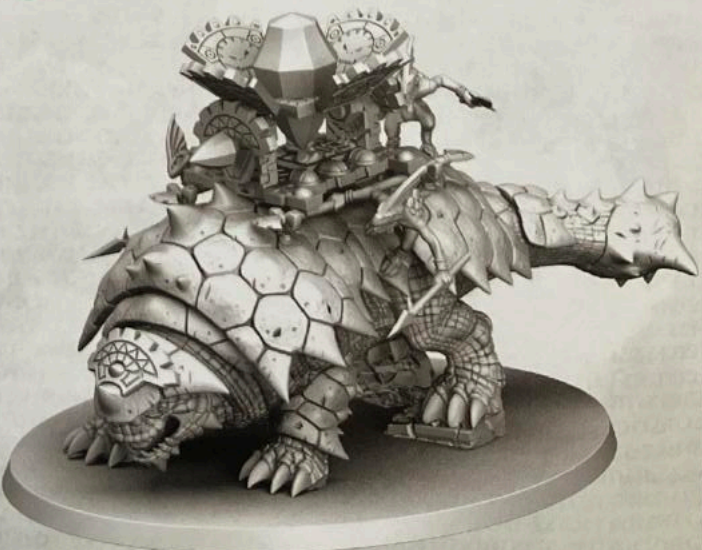
60



2 j

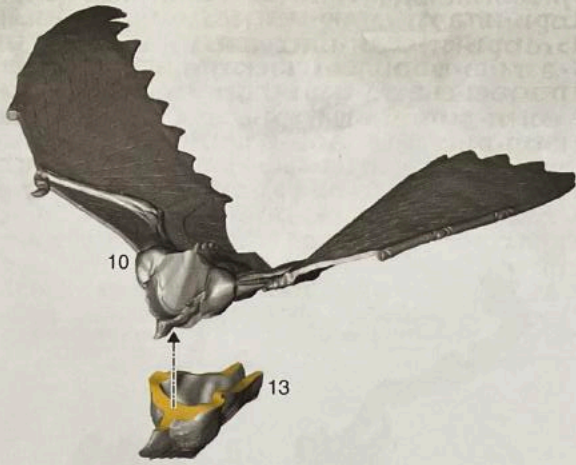


Ø 120mm

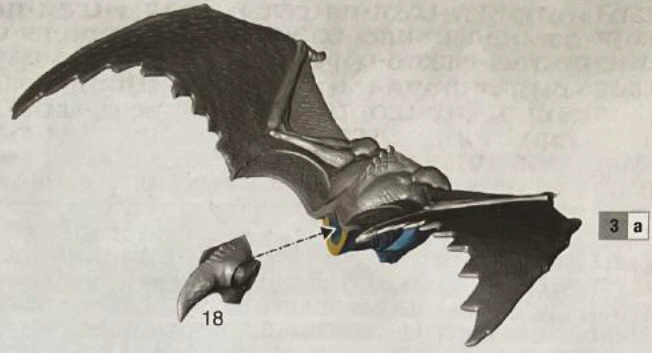


3 - 6 TERRADON RIDERS

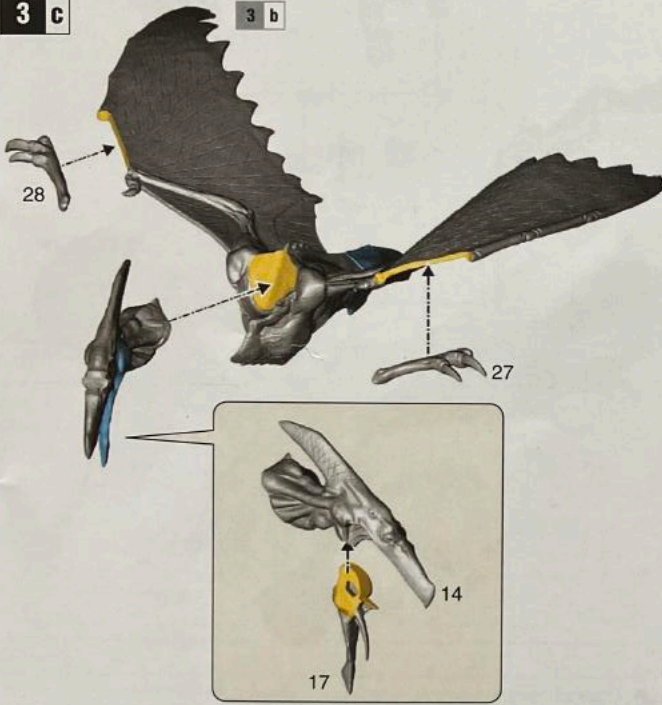
3 a TERRADON CHIEF / ALPHA / TERRADON RIDER 1



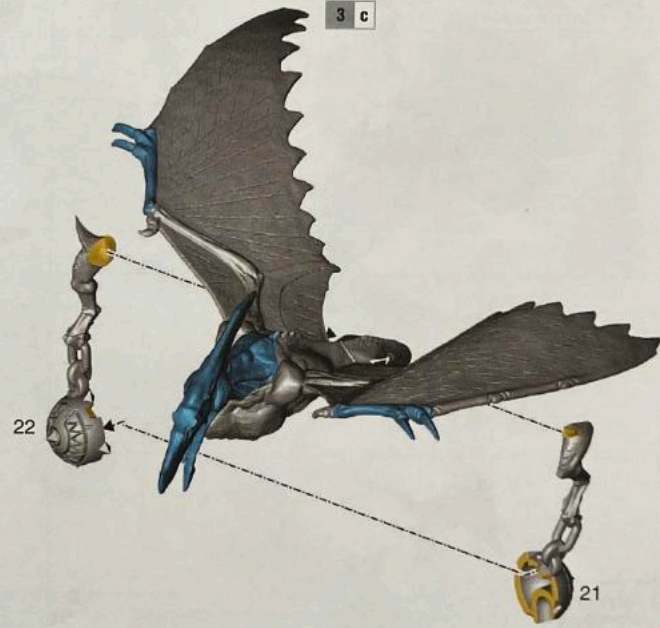
3 b



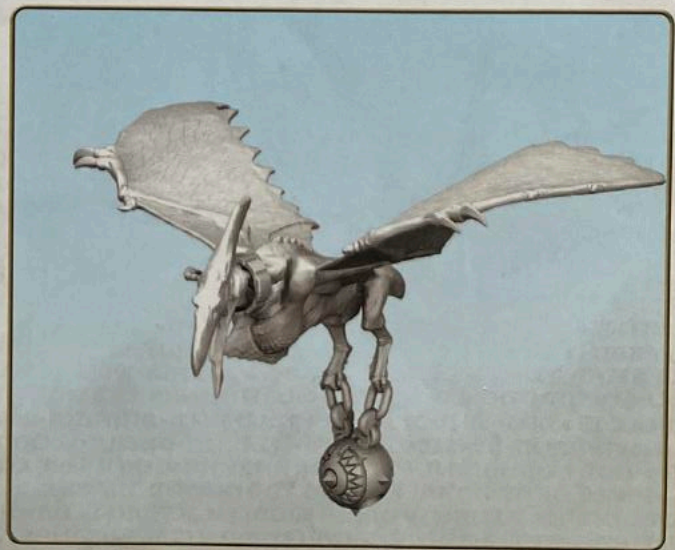
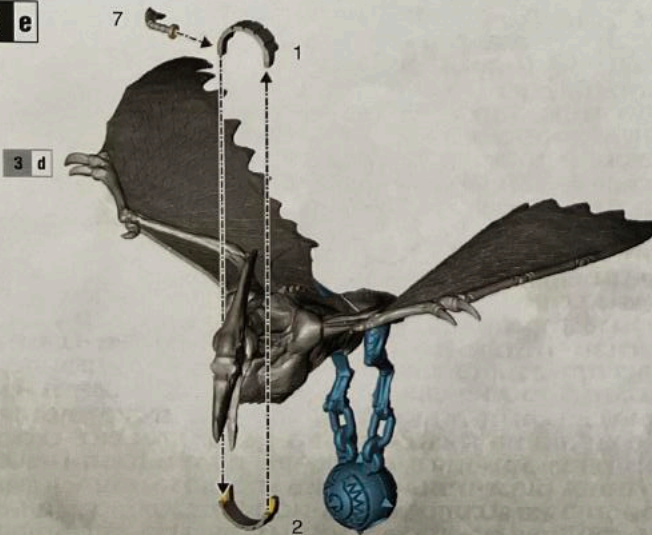
3 c



3 d

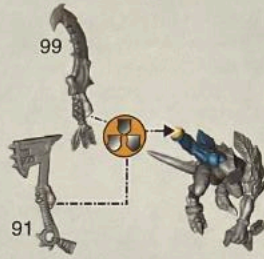


3 e





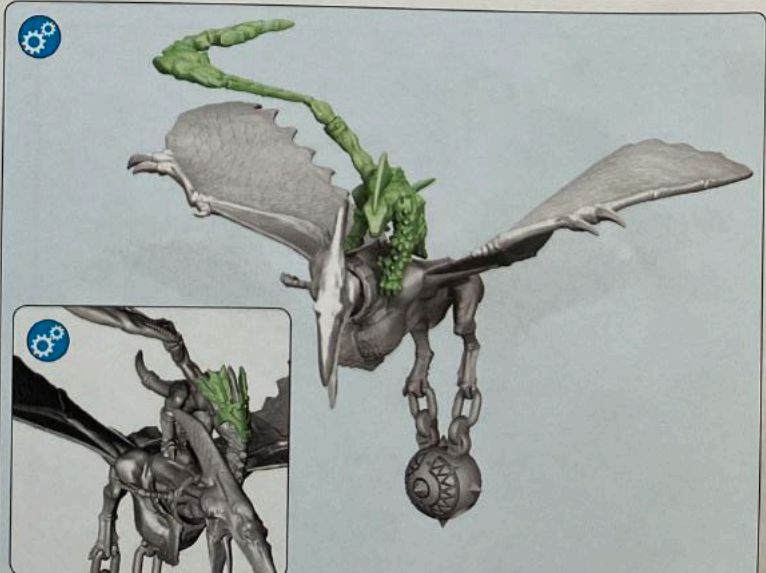
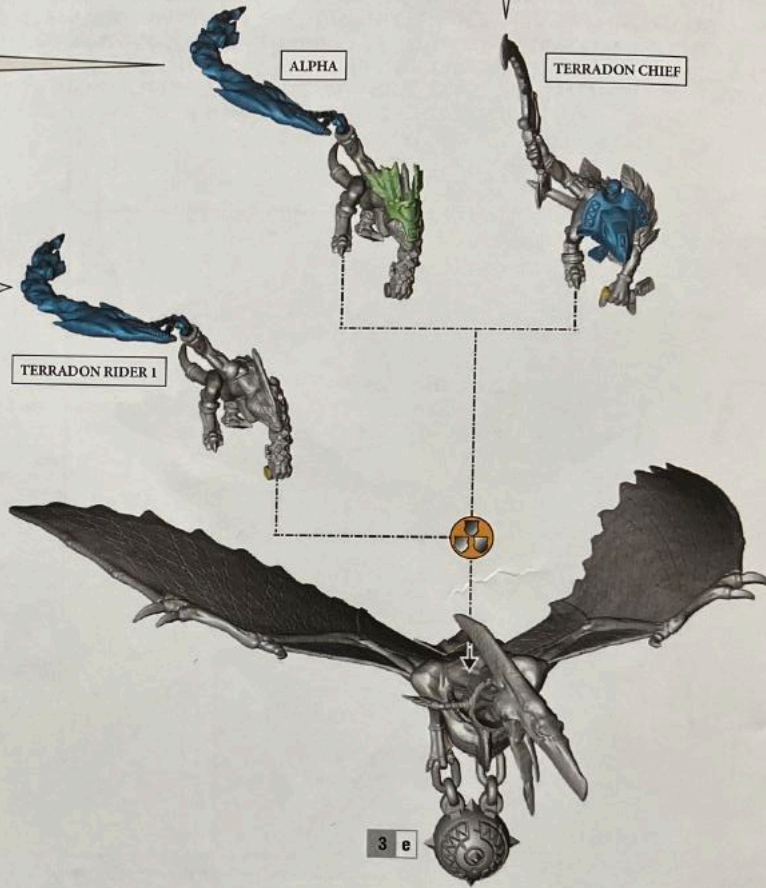
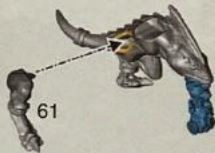
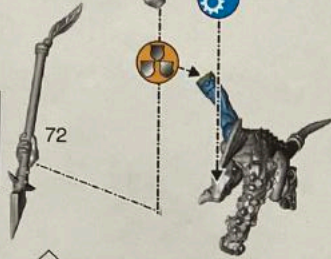
SKYBLADE
LAME DES CIEUX
FILO DEL CIELO
HIMMELSKLINGE
LAMA CELESTE



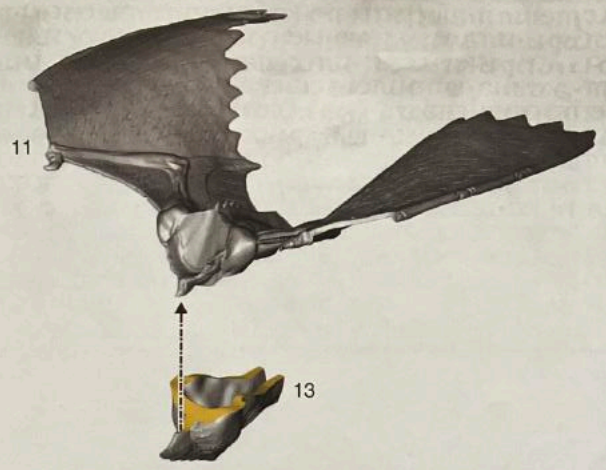
SUNLEECH BOLAS
BOLAS À HÉLIO-SANGSUES
BOLEADORAS DE
SANGUIJUELA SOLAR
SONNENEGEL-BOLA
BOLAS PROSCIUGASOLE



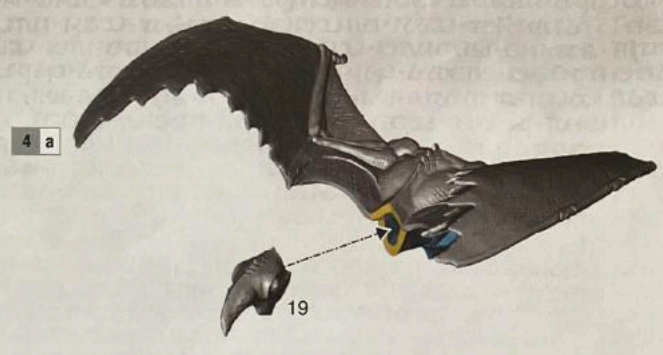
STARSTRIKE JAVELIN
JAVELINE D'IMPACT STELLAIRE
JABALINA ESTELAR
STERNENSCHLAGSPEER
GIAVELLOTTO COLPO STELLARE



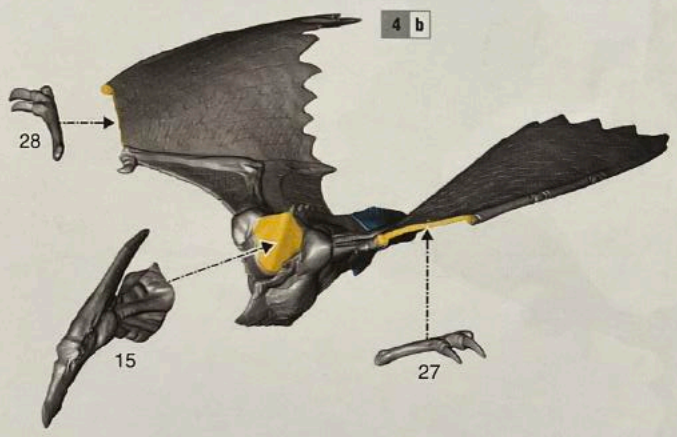
4 a TERRADON RIDER 2



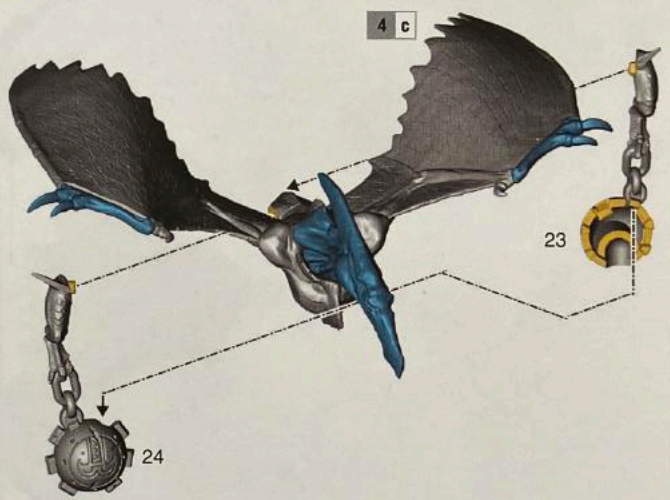
4 b



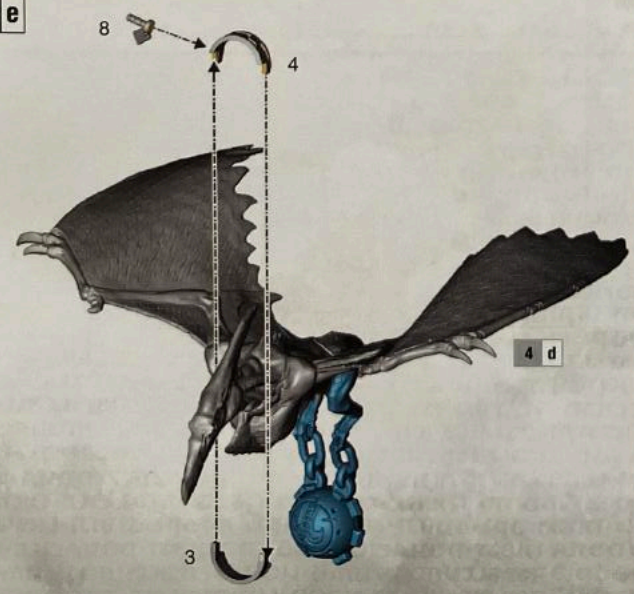
4 c



4 d



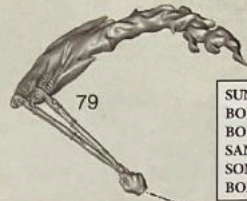
4 e



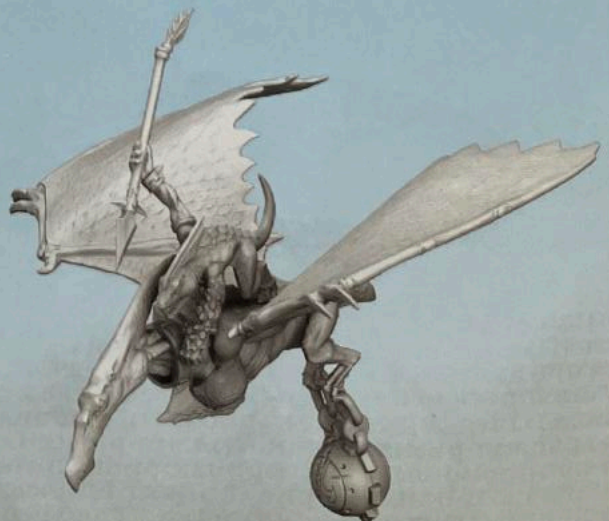
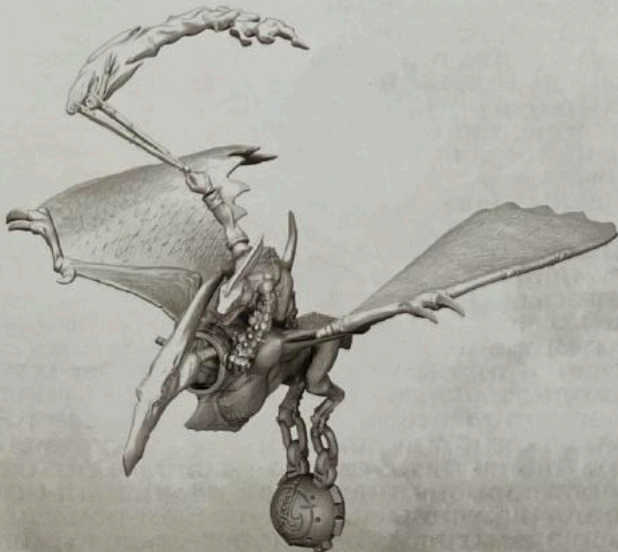
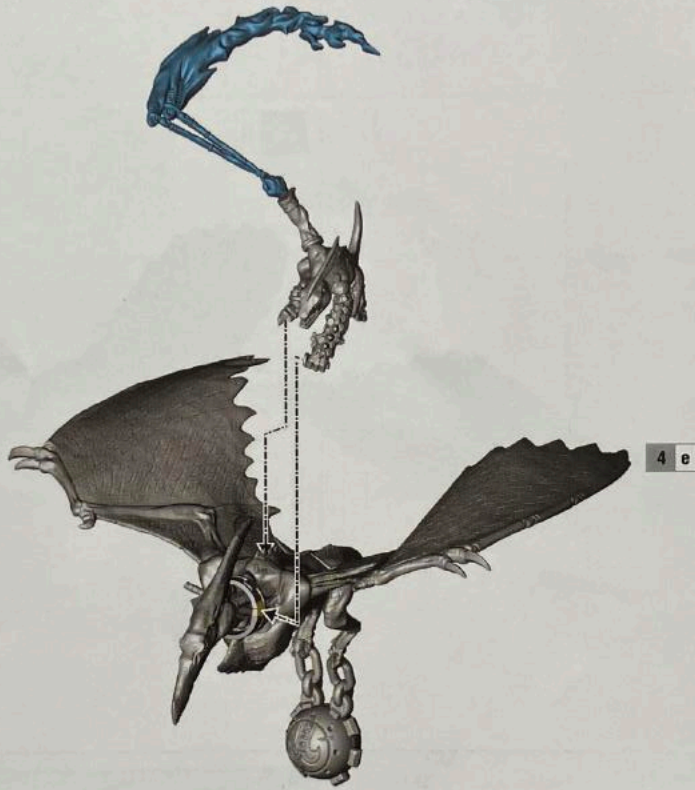
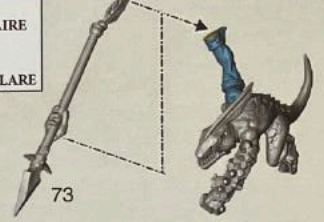
4 f



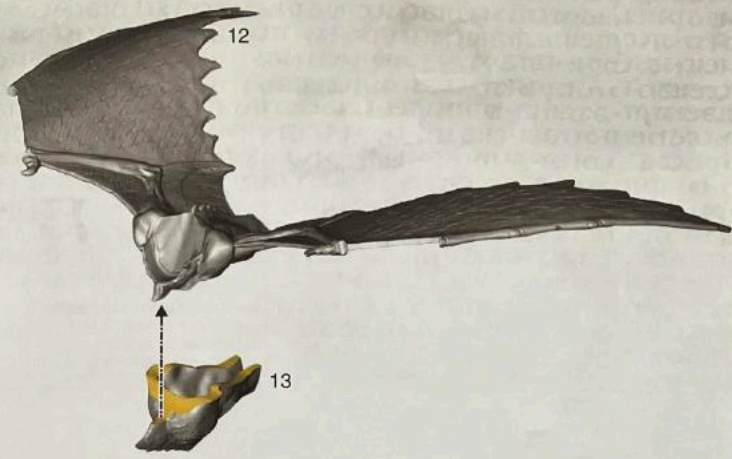
STARSTRIKE JAVELIN
JAVELINE D'IMPACT STELLAIRE
JABALINA ESTELAR
STERNENSCHLAGSPEER
GIAVELLOTTO COLPO STELLARE



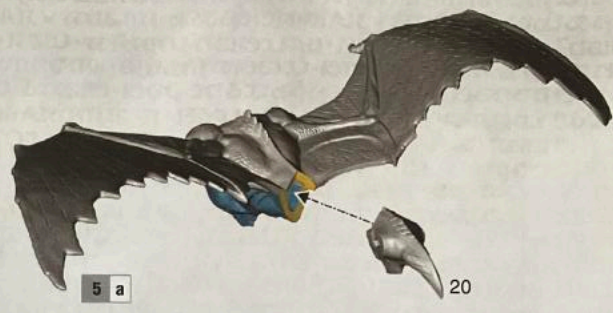
SUNLEECH BOLAS
BOLAS À HÉLIO-SANGSUES
BOLEADORAS DE
SANGUIJUELA SOLAR
SONNENEGEL-BOLA
BOLAS PROSCIUGASOLE



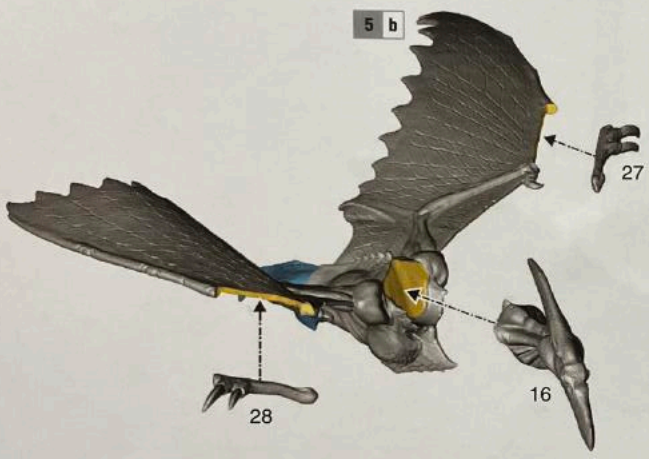
5 a TERRADON RIDER 3



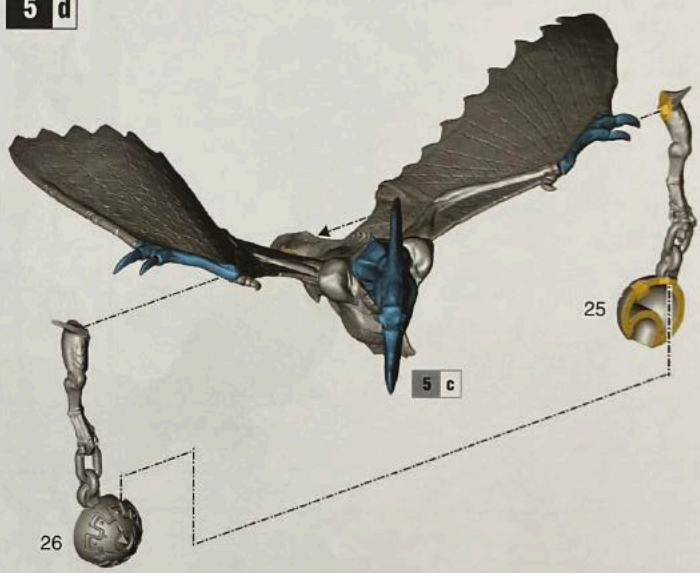
5 b



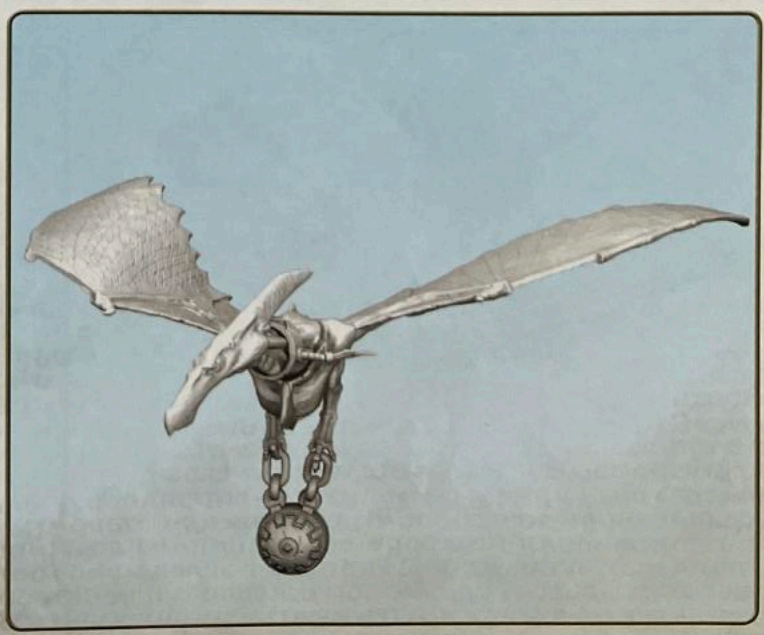
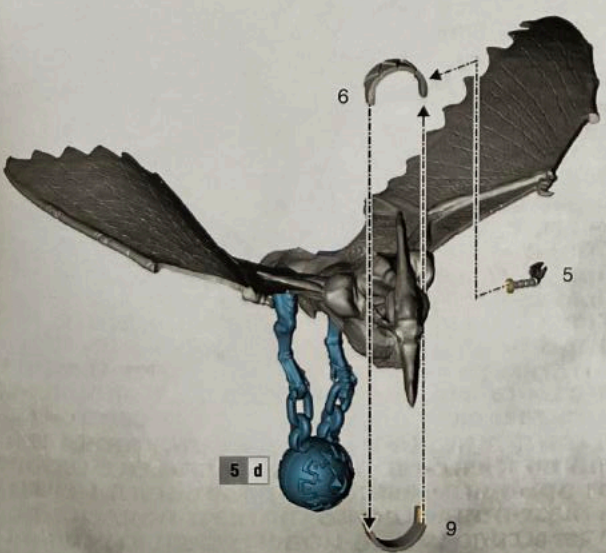
5 c



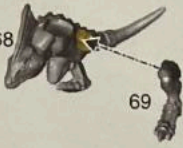
5 d



5 e



68



71



70



SUNLEECH BOLAS
BOLAS À HÉLIO-SANGSUES
BOLEADORAS DE
SANGUIJUELA SOLAR
SONNENEGEL-BOLA
BOLAS PROSCIUGASOLE

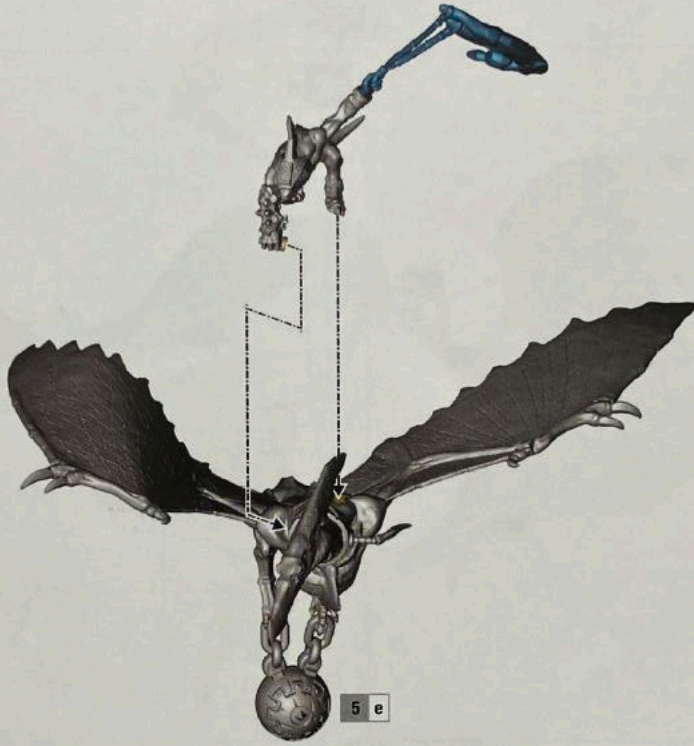
80



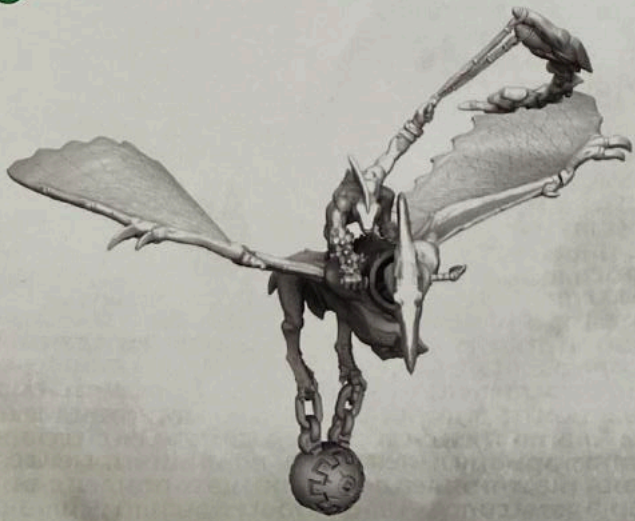
74

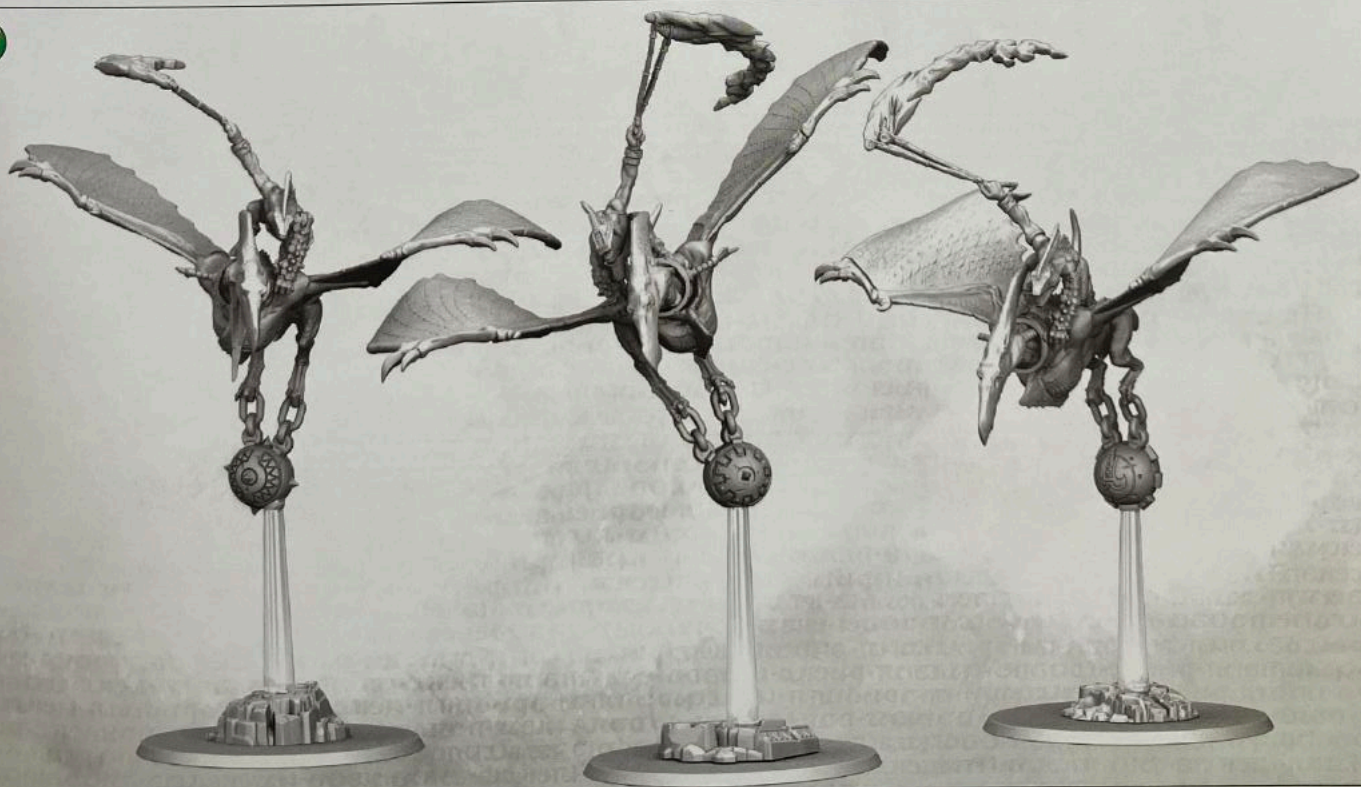
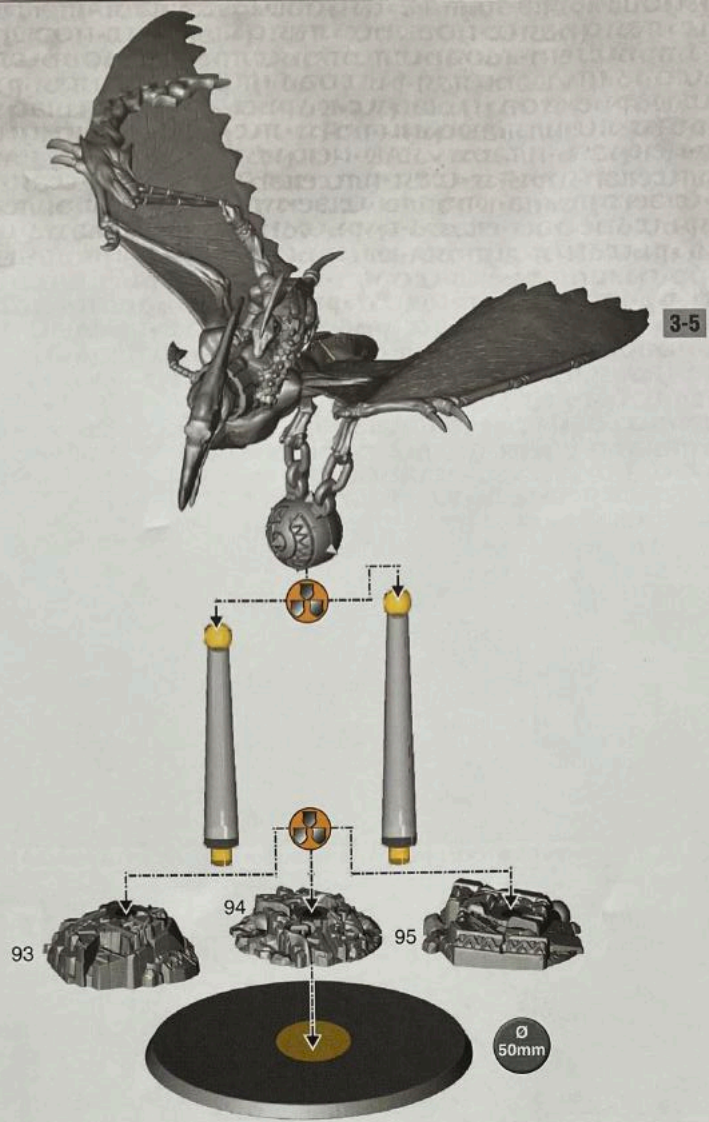


STARSTRIKE JAVELIN
JAVELINE D'IMPACT STELLAIRE
JABALINA ESTELAR
STERNENSCHLAGSPEER
GIAVELLOITTO COLPO STELLARE



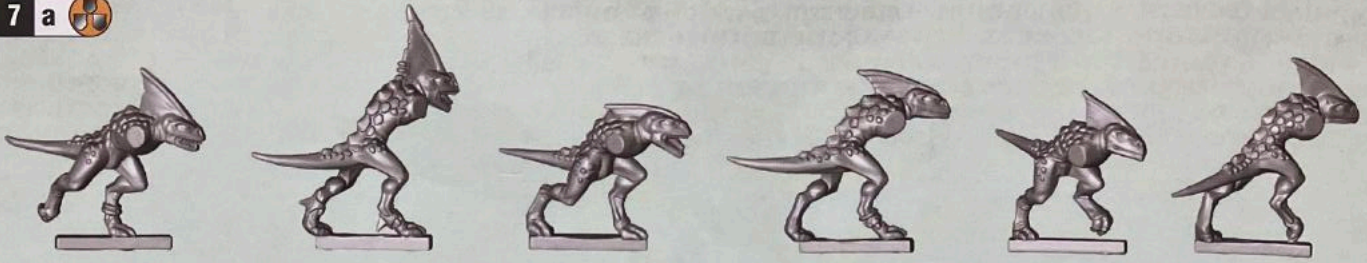
5 e



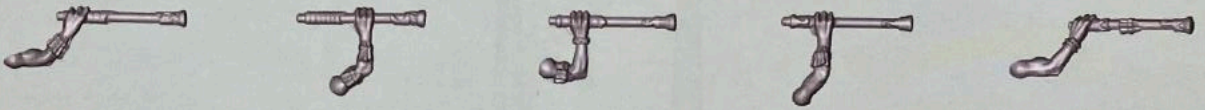


• INTERCHANGEABLE PARTS • ÉLÉMENTS INTERCHANGEABLES • PARTES INTERCAMBIABLES
 • AUSTAUSSCHBARE TEILE • COMPONENTI INTERCAMBIABILI

7 a

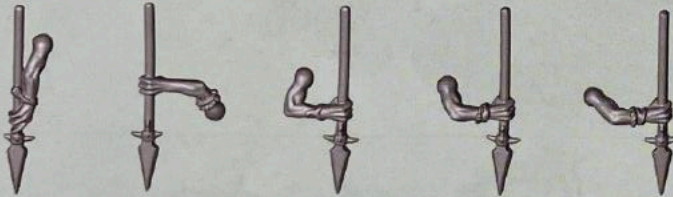


7 b

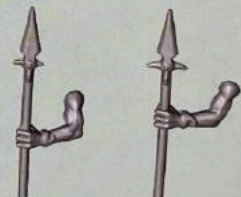


BOLTSPITTER • CRACHE-TRAITS • ESCUPEDARDOS • BLITZSPUCKER • SPUTADARDI

7 c



7 d



METEORIC JAVELIN • JAVELINE MÉTÉORIQUE • JABALINA METEÓRICA • METEORSPEER • GIAVELLOTTO METEORICO

7 e



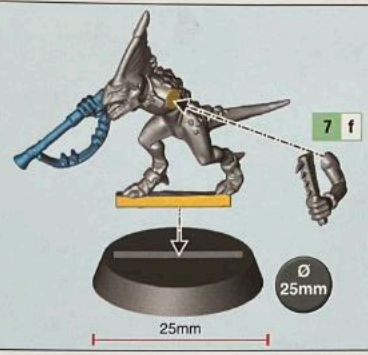
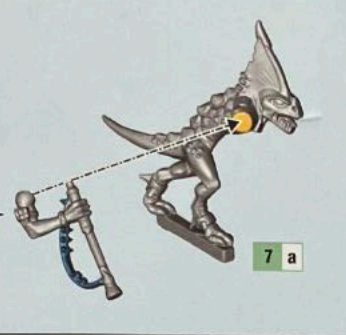
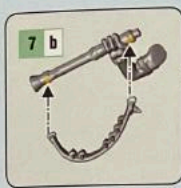
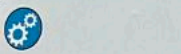
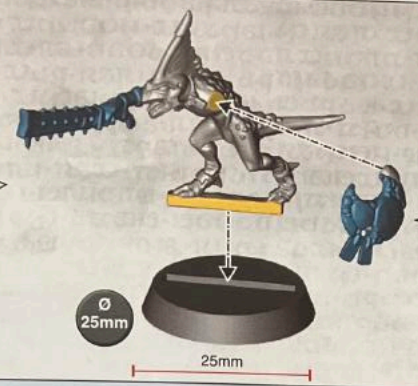
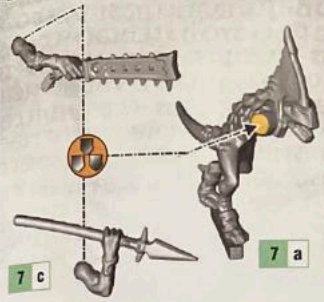
STAR-BUCKLER • RONDACHE DES ÉTOILES • RODELA ASTRAL • STERNENBUCKLER • BROCCHERE SIDERALE

7 f

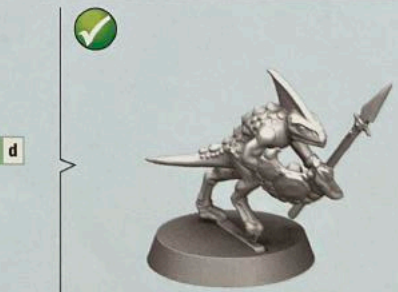
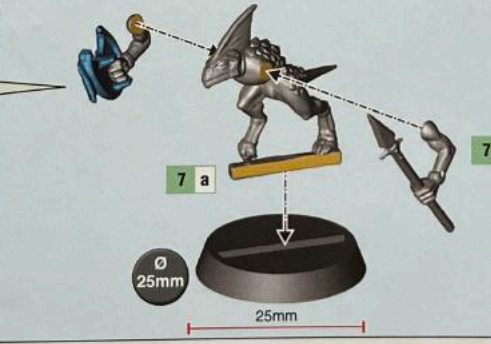
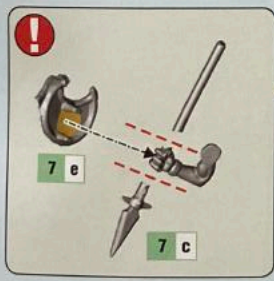
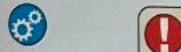
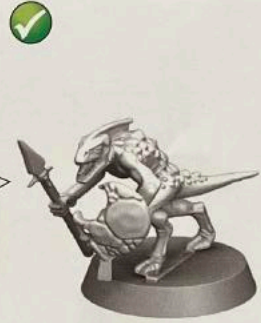
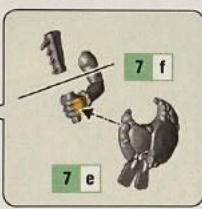
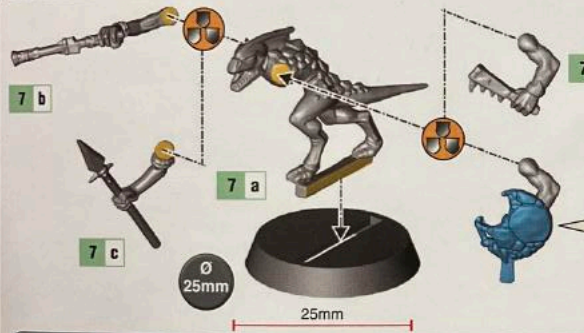


MOONSTONE CLUB • MASSUE DE PIERRE-DE-LUNE • MAZA DE PIEDRA LUNAR • MONDSTEINKEULE • MAZZA DI PIETRA LUNARE

8 a ALPHA



8 b SKINKS x11

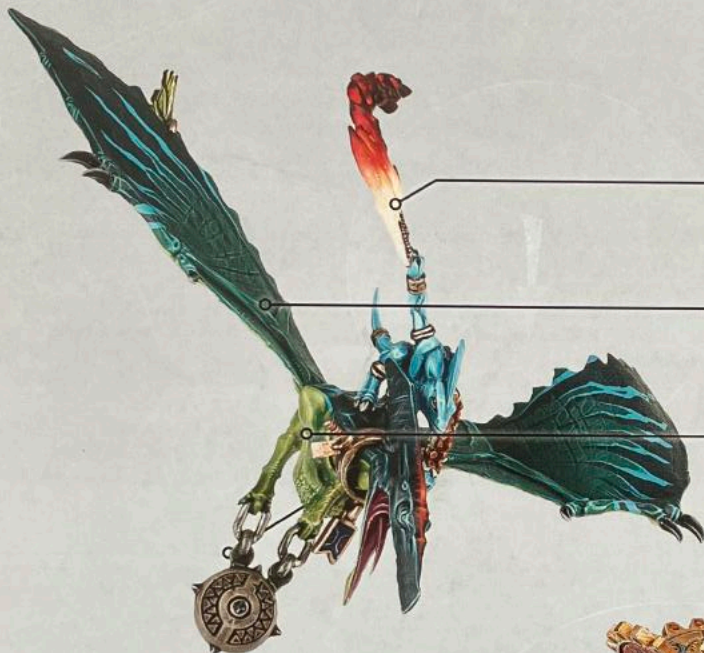


BASE RETRIBUTOR ARMOUR
SHADE AGRAX EARTHSHADE
LAYER LIBERATOR GOLD
LAYER STORMHOST SILVER

BASE CALEDOR SKY
SHADE DRAKENHOF NIGHTSHADE
LAYER TEMPLE GUARD BLUE
LAYER LOTHERN BLUE

BASE KANTOR BLUE
SHADE DRAKENHOF NIGHTSHADE
LAYER TECLIS BLUE
LAYER ULTHUAN GREY

BASE CALEDOR SKY
SHADE DRAKENHOF NIGHTSHADE
LAYER SOTEK GREEN
LAYER TEMPLE GUARD BLUE



BASE CERAMITE WHITE
LAYER YRIEL YELLOW
LAYER EVIL SUNZ SCARLET
BASE ABADDON BLACK

BASE INCUBI DARKNESS
SHADE COELIA GREENSHADE
LAYER KABALITE GREEN
LAYER SYBARITE GREEN

BASE DEATH WORLD FOREST
SHADE BIEL-TAN GREEN
LAYER ELYSIAN GREEN
LAYER WARPSTONE GLOW

BASE AVERLAND SUNSET
SHADE FUEGAN ORANGE
LAYER YRIEL YELLOW
EDGE DORN YELLOW

BASE ZANDRI DUST
SHADE SERAPHIM SEPIA
LAYER USHABTI BONE
LAYER SCREAMING SKULL

BASE CALIBAN GREEN
SHADE NULN OIL
LAYER WARPSTONE GLOW
LAYER ELYSIAN GREEN

