



Free Downloads of Build Instructions,  
Assembly Booklets & How To Guides

**BuildInstructions.com**

# IMPERIAL™ ARMOUR

## SCYLLAX GUARDIAN-AUTOMATA

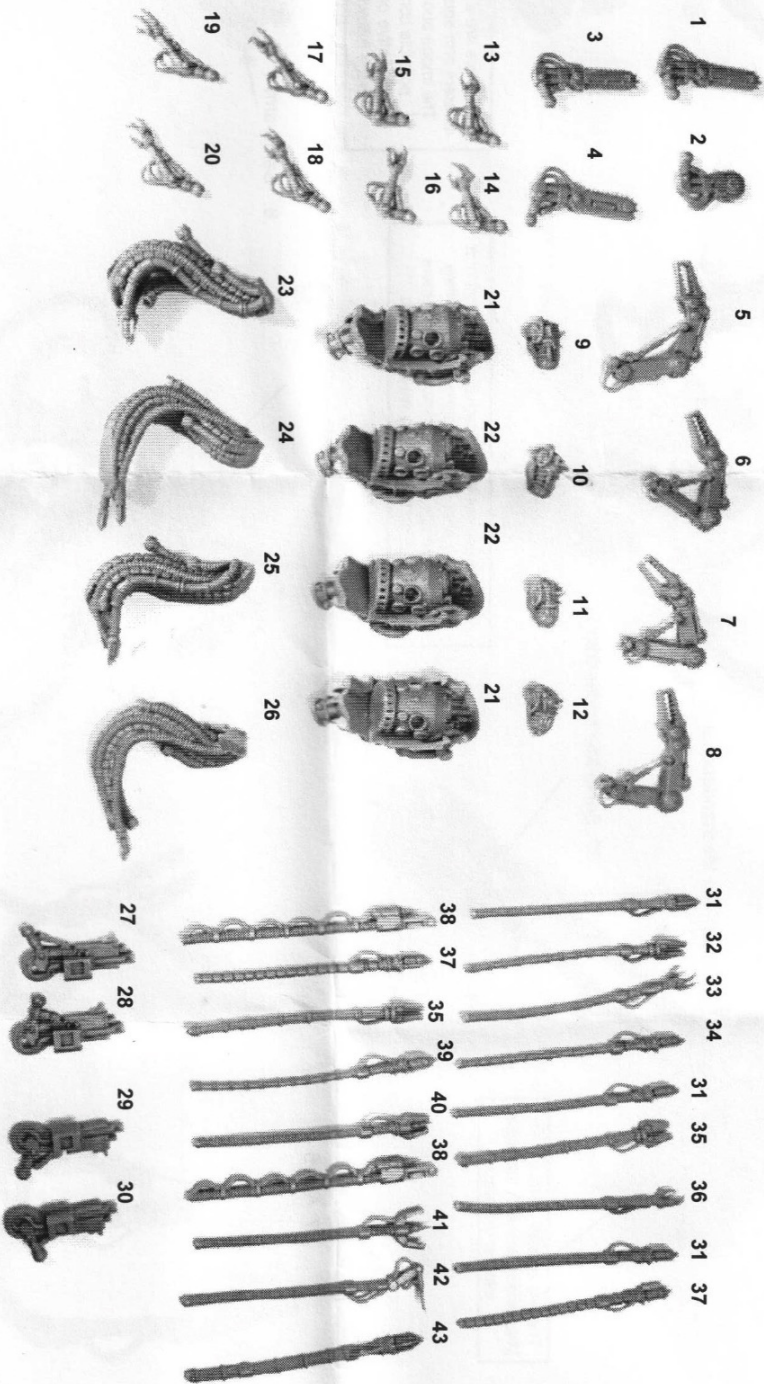
Product Code: 99550108132

The copyright on the model designs and components within this box is the exclusive property of Games Workshop Ltd. Copyright Games Workshop Ltd, 2015. All rights reserved.

### SCYLLAX GUARDIAN-AUTOMATA

#### COMPONENTS LIST

1. Chainblade Arm 1
2. Chainblade Arm 2
3. Chainblade Arm 3
4. Chainblade Arm 4
5. Servo-arm 1
6. Servo-arm 2
7. Servo-arm 3
8. Servo-arm 4
9. Head 1
10. Head 2
11. Head 3
12. Head 4
13. Arm 1
14. Arm 2
15. Arm 3
16. Arm 4
17. Arm 5
18. Arm 6
19. Arm 7
20. Arm 8
21. Body 1 (x2)
22. Body 2 (x2)
23. Transversum Coils 1
24. Transversum Coils 2
25. Transversum Coils 3
26. Transversum Coils 4
27. Bolter Arm 1
28. Bolter Arm 2
29. Bolter Arm 3
30. Bolter Arm 4
31. Interface Mechadendrite 1 (x3)
32. Servo Mechadendrite 2
33. Open Claw Mechadendrite
34. Interface Mechadendrite 4
35. Servo Mechadendrite 1 (x2)
36. Closed Claw Mechadendrite
37. Interface Mechadendrite 3 (x2)
38. Chainblade Mechadendrite (x2)
39. Interface Mechadendrite 2
40. Closed Drill Mechadendrite
41. Open Drill Mechadendrite
42. Injector Mechadendrite
43. Interface Mechadendrite 5



This kit contains all the pieces required to build 4 Scyllax Guardian-automata. To glue the resin pieces together and to plastic kit parts use Citadel Super Glue.

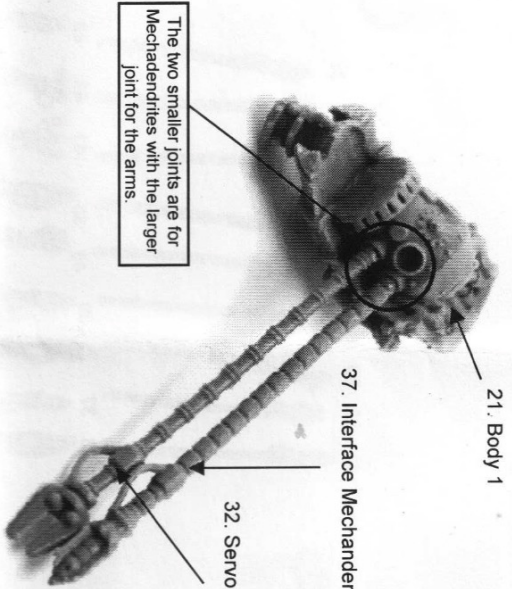
**NOTE:** We have cast this kit using the most advanced techniques and the best quality resin, but due to the nature of the casting process YOUR model may contain very slight air bubbles.

These can easily be filled with model filler or super glue. Any slight warpage or thin parts can easily be corrected by immersing the part in hot tap water for about 1 minute then carefully bending it back into shape.

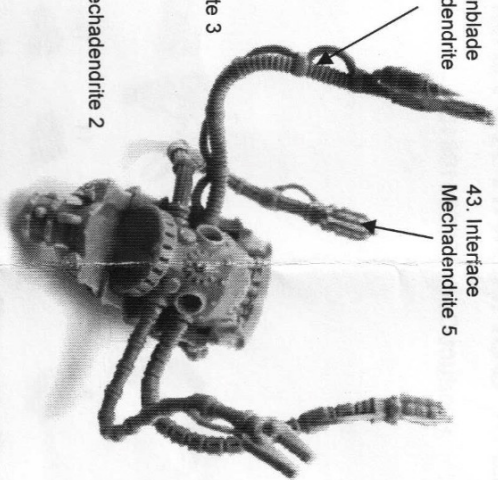
**THIS IS NOT A TOY**

Not suitable for children under 15 years of age. **WARNING:** Resin dust can be harmful if inhaled. Always wear a dust mask or respirator when sanding or sawing resin parts.

Scyllax Guardian-automata example, all parts for the individual Guardian-automata are interchangeable

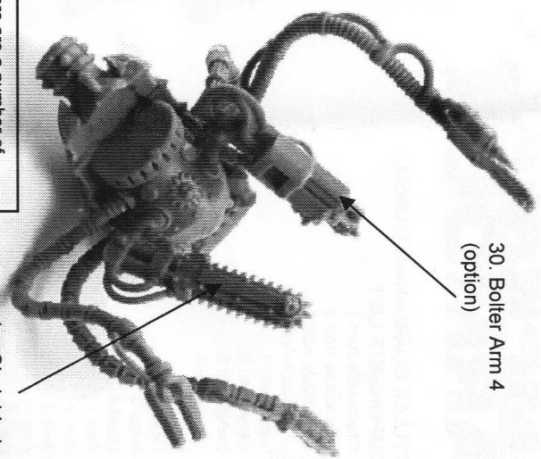


38. Chainblade Mechadendrite



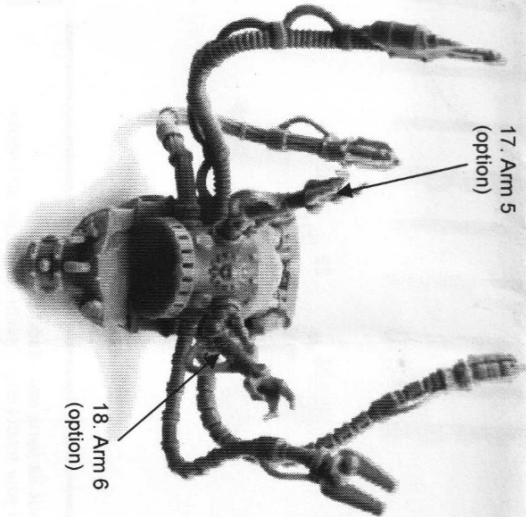
You can use hot water or a hairdryer/hot air gun to gently heat the mechadendrites until they become malleable; this allows you a moment to pose them in any way you wish.

30. Bolter Arm 4 (option)

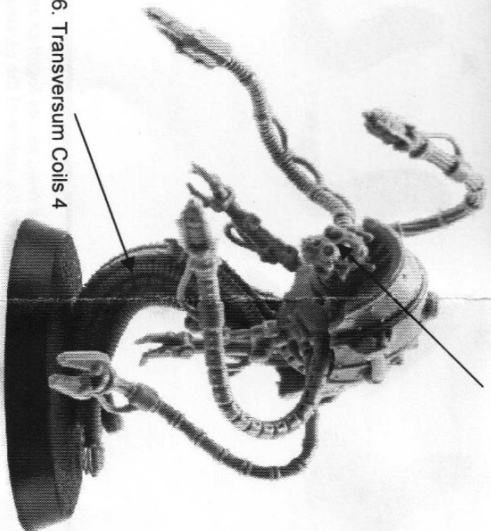


There are a number of different arm equipment options. The image above shows one possible configuration. An alternative one is displayed in the following images.

There is a small rail on the back to attach the Servo-arm to.



10. Head 2



8. Servo-arm 4

