



Free Downloads of Build Instructions,
Assembly Booklets & How To Guides

BuildInstructions.com

WARHAMMER AGE OF SIGMAR



MARSHCRAWLA SLOGGOTH

SLOGGOTH DES MARAIS • TREPAPANTANOZ SLOGGOTH • MATSCHKRIECHA-SLOGGOTH
BRADIGGOTH DELLE PALUDI • マーシュクロウラ・スロゴス・沼澤爬行者

READ THIS FIRST • À LIRE EN PRIORITÉ • BITTE BEACHTE • LEE ESTO PRIMERO • LEGGI PRIMA QUESTO
• 最初にお読みください。 • 请优先阅读

E BEFORE ASSEMBLING YOUR MINIATURES, PLEASE READ THROUGH THE INSTRUCTIONS IN THIS BOOKLET CAREFULLY. A pair of plastic cutters is required to remove the plastic components in this kit from their frame. We advise using a moulding tool to clean up the parts. To assemble your model you will need plastic glue. Games Workshop sells Citadel Fine Detail Cutters, Citadel Mouldline Remover and Citadel Plastic Glue, but does not recommend these products for use by children under the age of 16 with adult supervision.

E AVANT D'ASSEMBLER VOS FIGURINES, VEUILLEZ LIRE ATTENTIVEMENT LES INSTRUCTIONS DE CE LIVRET. Une paire de coupeurs en plastique est requise pour détacher chaque élément de sa grappe. Nous vous recommandons l'utilisation d'un grattoir pour ébarber les éléments. Pour l'assemblage, vous aurez également besoin de colle plastique. Games Workshop commercialise les Pinces de Précision Citadel, l'Ébarboir Citadel et la Colle Plastique Citadel, mais n'en recommande pas l'utilisation pour des enfants de moins de 16 ans sans supervision d'un adulte.

E POR FAVOR, LEE CUIDADOSAMENTE ESTE LIBRETO DE INSTRUCCIONES ANTES DE EMPEZAR A MONTAR LAS MINIATURAS. Te harán falta unas tenazas para plástico a fin de separar las piezas de la matriz. También aconsejamos una herramienta para rebabas a fin de limpiar cada pieza. Para montar la miniatura necesitarás pegamento para plástico. Games Workshop vende Tenaza Citadel, Herramientas para rebabas Citadel y Pegamento para plástico Citadel, pero no recomienda estos productos a menores de 16 años sin supervisión de un adulto.

E VOR DEM ZUSAMMENBAU DER MINIATUREN BITTE DIE ANWEISUNGEN IN DIESER ANLEITUNG AUFMERKSAM DURCHLESEN. Du benötigst einen Kunststoffseitenschneider, um die Kunststoffbauteile aus dem Gussrahmen herauszutrennen, und eine Rebabenschleife, um die Miniatur zusammenzubauen. Außerdem empfehlen wir, die Bauteile vorher mit einem Gussgratentferner zu reinigen. Games Workshop bietet Präzisions-Kunststoffseitenschneider von Citadel sowie Citadel-Kunststoffkleber an, empfiehlt aber, Kinder unter 16 Jahren diese nur unter Aufsicht eines Erwachsenen benutzen.

E PRIMA DI ASSEMBLARE LE TUE MINIATURE LEGGI ATTENTAMENTE TUTTE LE ISTRUZIONI DI QUESTO LIBRETTO. È necessario un paio di tronchesine per plastica per staccare i componenti dai loro sprue. Consigliamo di usare un attrezzo apposito per pulire i componenti. Per assemblare il modello avrai bisogno di colla per plastica. Games Workshop vende Tronchesine di precisione Citadel, Attrezzo per ripulire Citadel e Colla per plastica Citadel, ma non consiglia questi prodotti ad un pubblico minore di 16 anni senza supervisione di un adulto.



x1



• EXPLANATION OF SYMBOLS • EXPLICATION DES SYMBOLES • EXPLICACIÓN DE SÍMBOLOS
 • ERLÄUTERUNG DER SYMBOLE • LEGENDA DEI SIMBOLI • アイコン解説 • 符号说明



- Choice of parts
- Choix d'éléments
- Modelos de componentes
- Auswahl an Teilen
- Scelta di componenti
- パーツの選択
- 选择部件

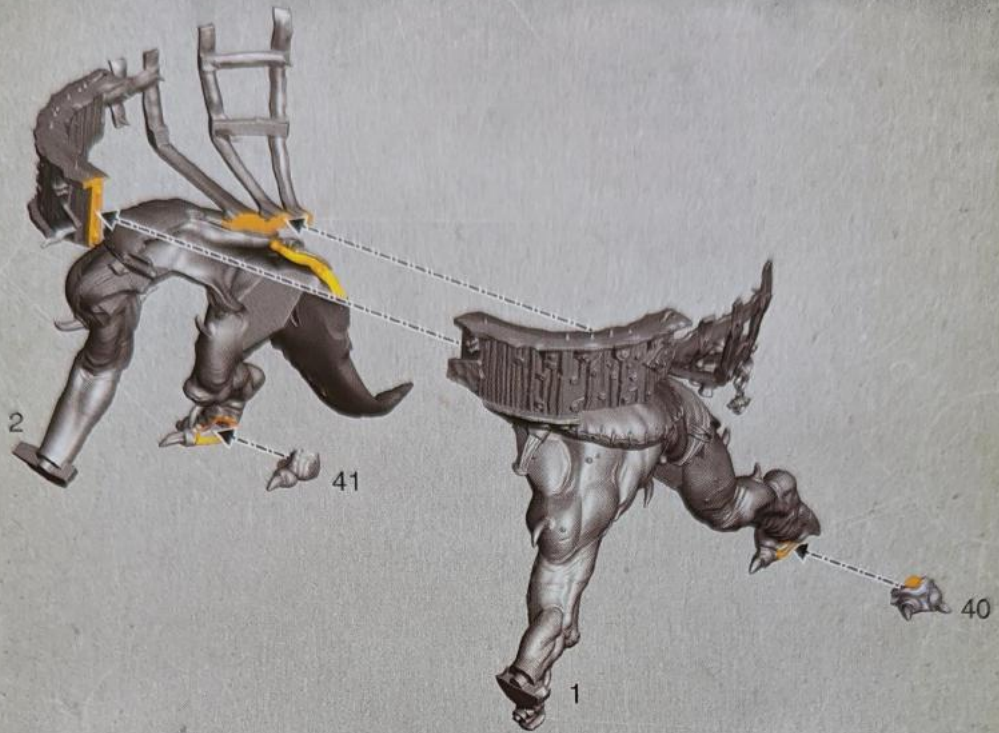


- Paint before assembly
- Peindre avant assemblage
- Pintar antes del montaje
- Erst bemalen, dann zusammenbauen
- Dipingi prima dell'assemblaggio
- 組み立て前にペイントすること
- 组装前涂装

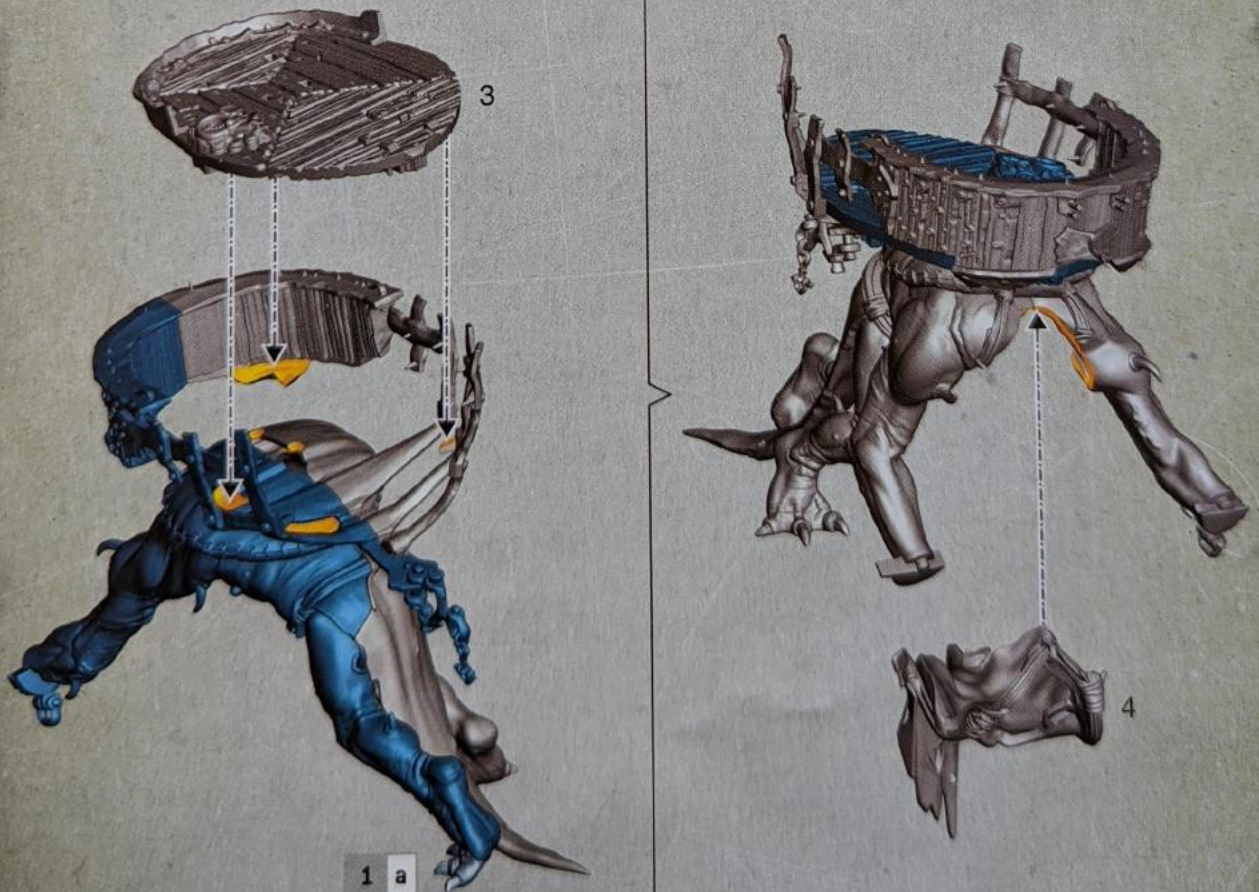


- Stage complete
- Étape terminée
- Paso completado
- Schritt abgeschlossen
- Fase completa
- このステージの完成
- 完成

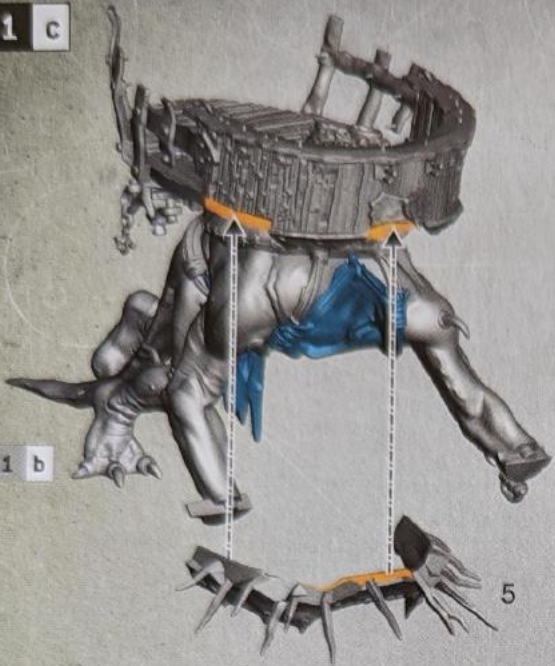
1 a



1 b



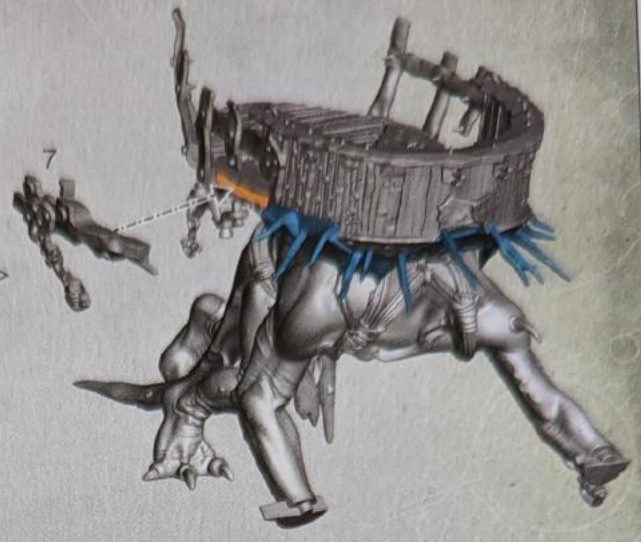
1 c



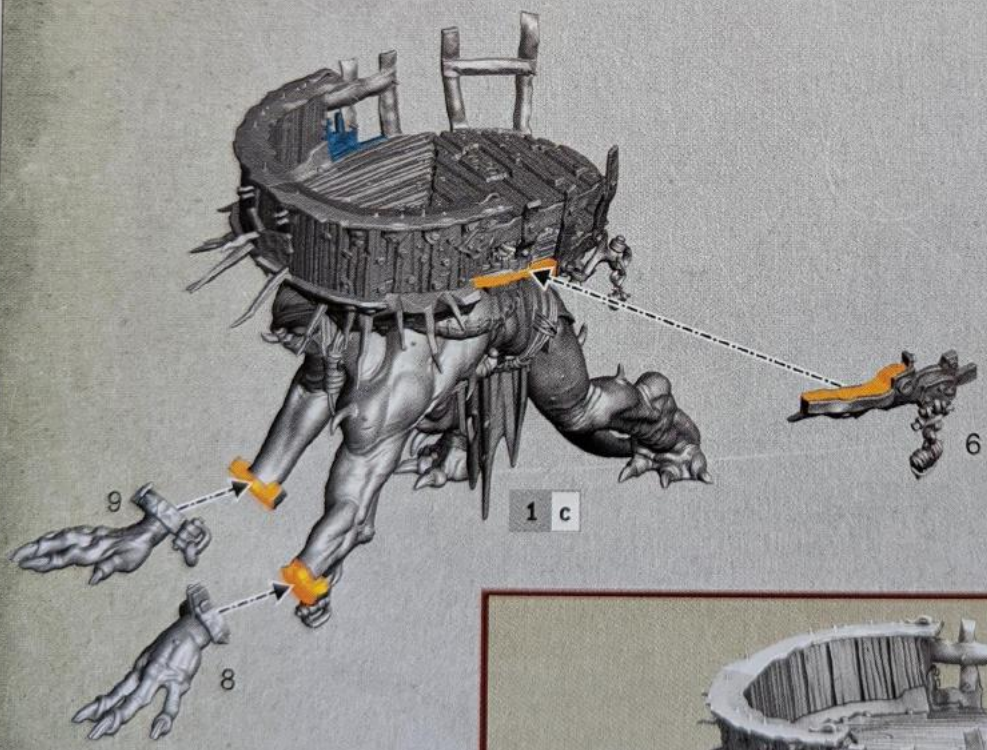
1 b



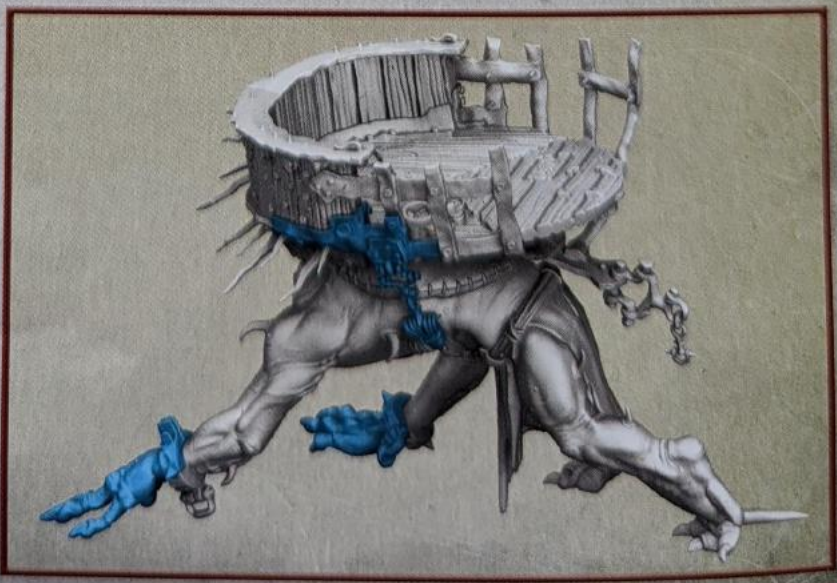
5



1 d



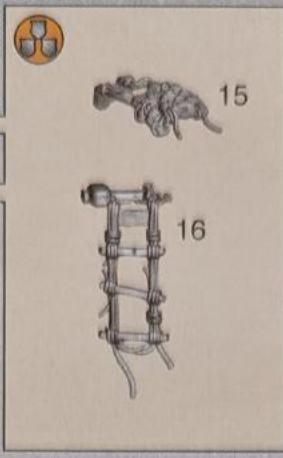
1 c



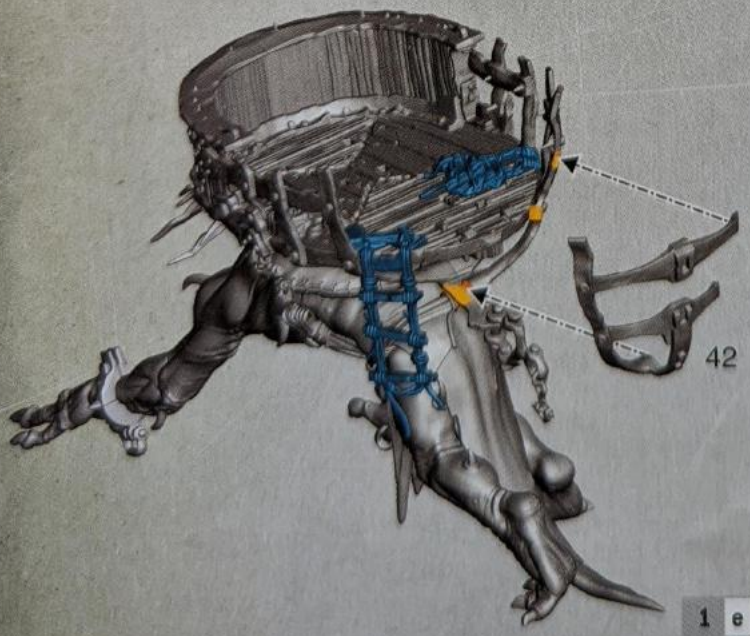
1 e



1 d

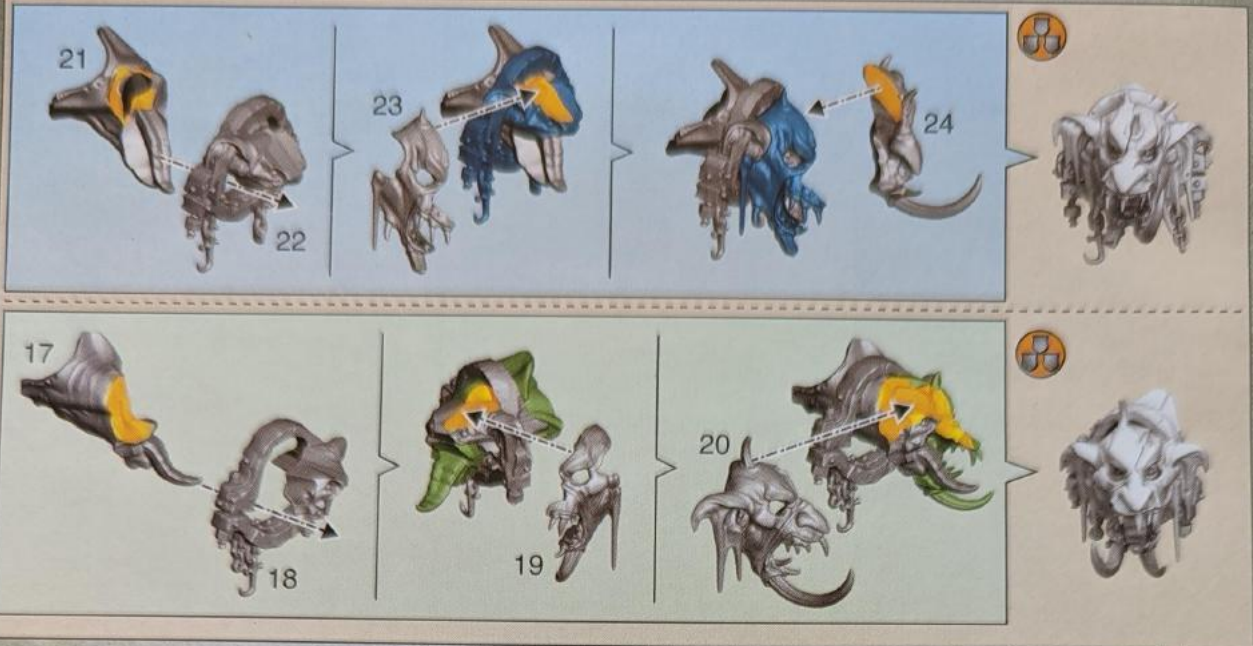


1 f

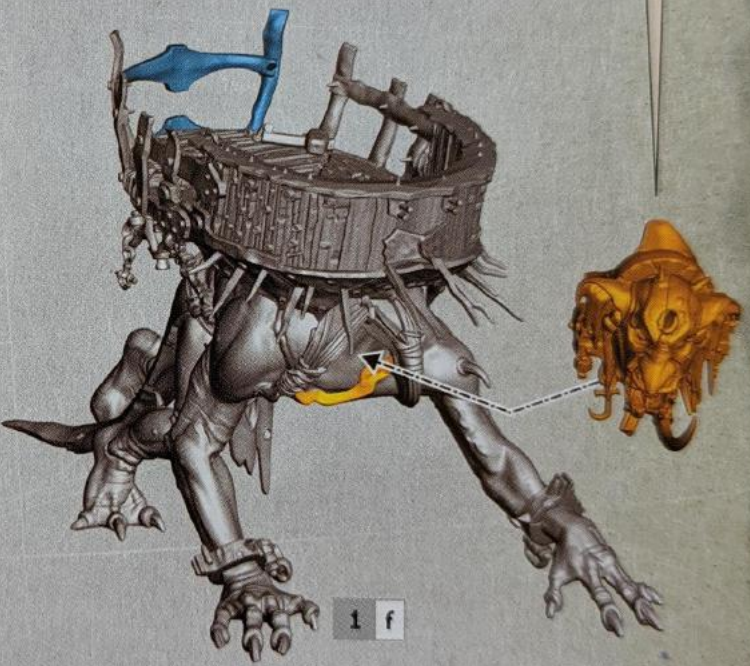


1 e

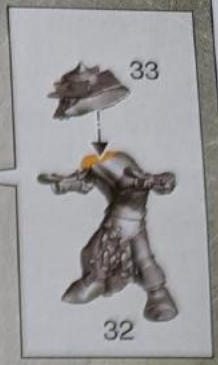




- Choose the variant you want to build
- Choisissez la variante à assembler
- Elige qué versión quieres montar
- Wähle die Variante, die du bauen möchtest
- Scegli la variante che vuoi assemblare
- 組み立てバリエーションの選択
- 选择你喜欢的拼装方式



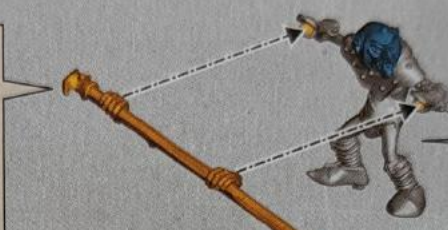
2



33

32

3



37

36



4 a

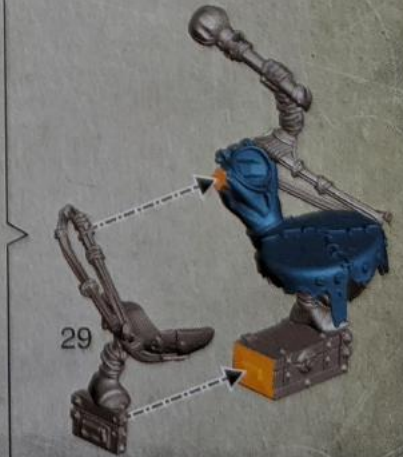


27

26



28

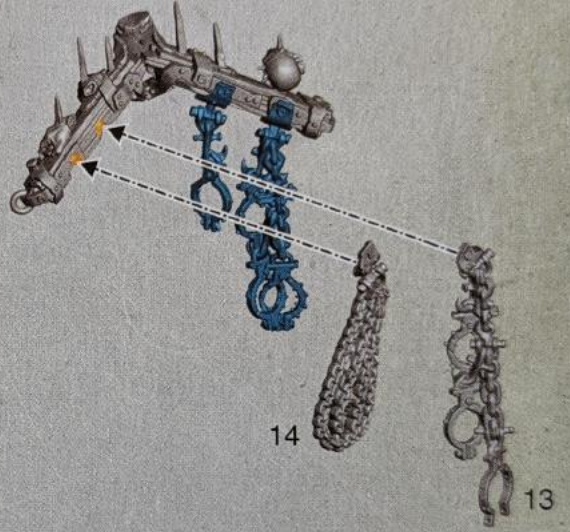
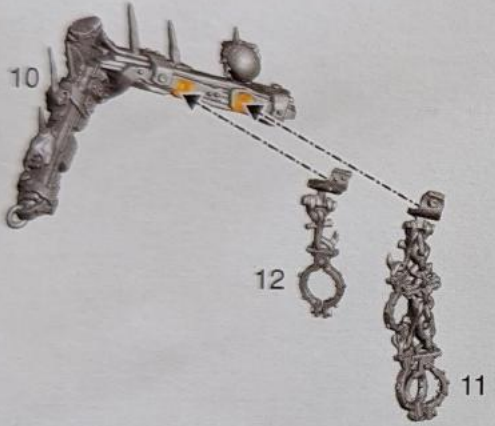


29

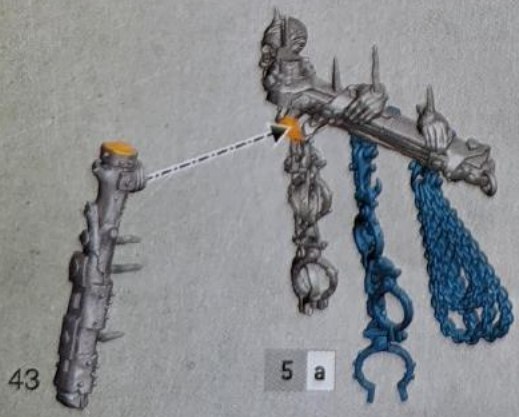
4 b



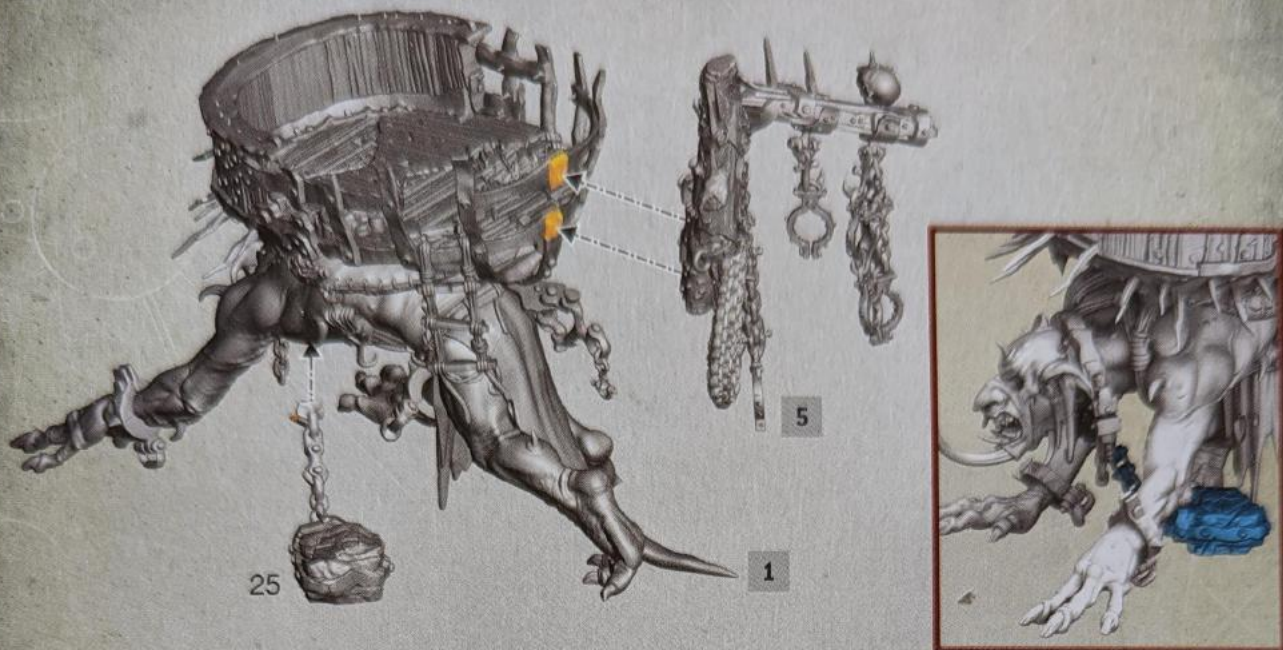
5 a



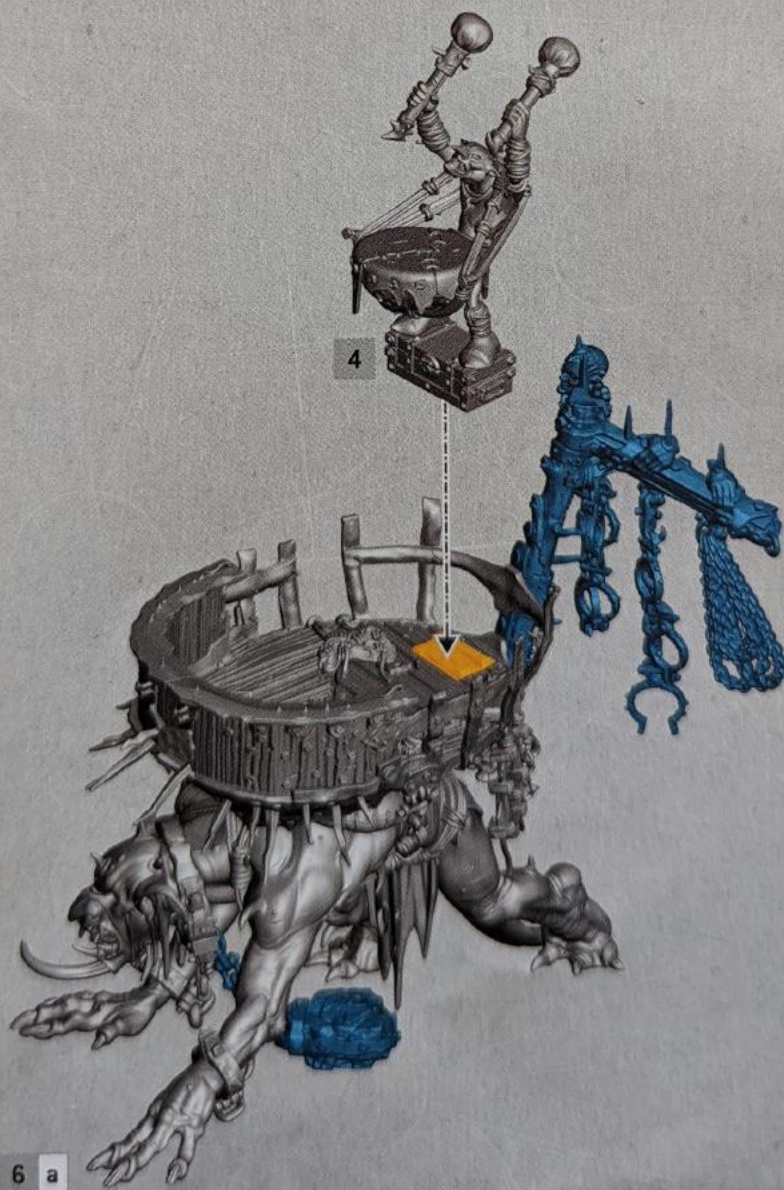
5 b

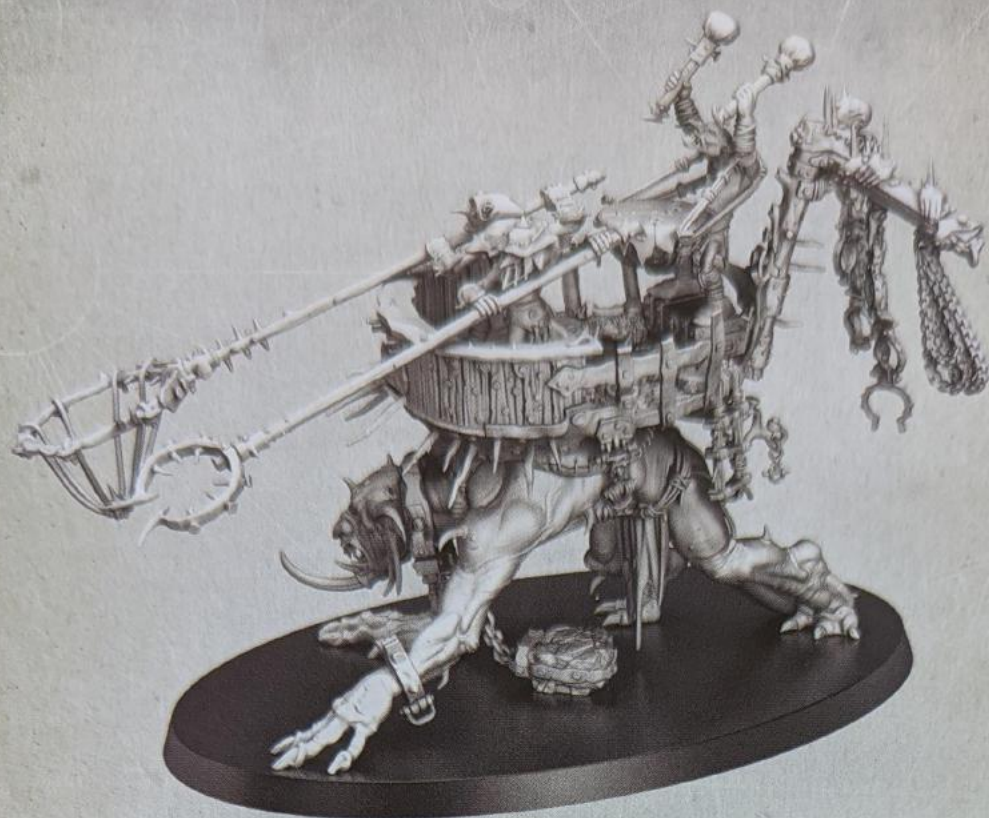


6 a



6 b





ENG The full painting guide can be found on citadelcolour.com/guides

FRE Le guide de peinture complet est disponible sur citadelcolour.com/guides

ESP Puedes encontrar la guía completa de pintura en citadelcolour.com/guides

GER Die vollständige Bemalanleitung findest du auf citadelcolour.com/guides

ITA Puoi trovare la guida completa alla pittura su citadelcolour.com/guides

日本語 ペイントの完全版ガイドは citadelcolour.com/guides に掲載されている。

中文 可以在 citadelcolour.com/guides 找到完整涂装指南。



**CITADEL
COLOUR**

citadelcolour.com/guides