



Free Downloads of Build Instructions,  
Assembly Booklets & How To Guides

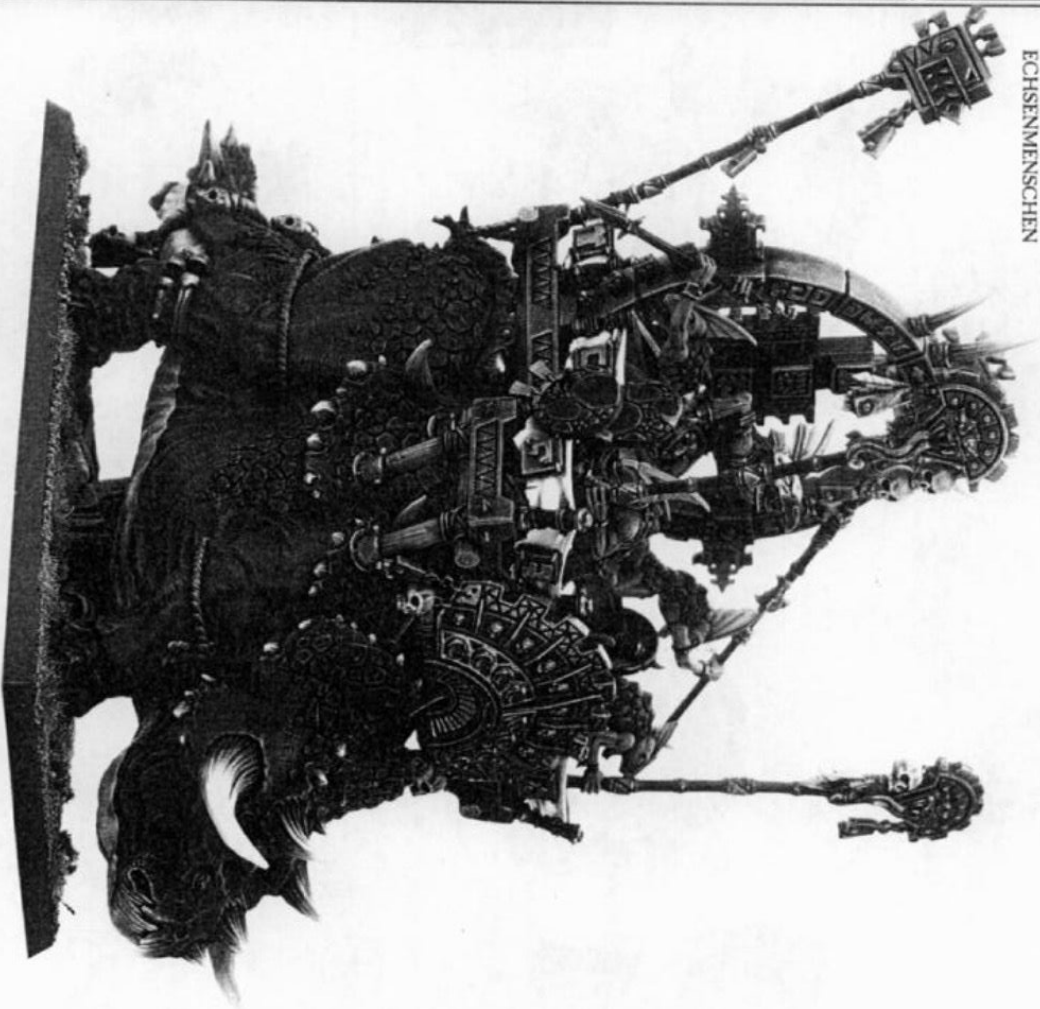
**BuildInstructions.com**

# WARDHAMMER®



LIZARDMEN STECADON  
STECADON  
ESTECADON  
STECADON DER  
ECHSENMENSCHEN

STECADONTE DEGLI  
LUMINI LUCERTOLA  
リザーフトン ステカトン



**ENGLISH** • Before assembling your model kit, read through these instructions carefully. To assemble this kit you will need some suitable adhesive for the metal or plastic parts and a sharp modelling knife. A pair of clippers can also be useful when removing the components from the sprue. Carefully clean off any plastic mould lines and injection markings using a modelling knife (remember to make cuts away from your body and fingers). Adult supervision is recommended when using adhesive and tools.

**FRANÇAIS** • Lisez attentivement ces instructions avant de commencer l'assemblage de votre maquette. Vous aurez besoin pour ce faire de colle adaptée pour les éléments en plastique ou en métal, ainsi que d'un couteau de modélisme. Une paire de pinces courantes pourra être également utile pour détacher les éléments de leur grappe. Enlevez les traces de moulage et d'injection à l'aide d'un couteau de modélisme (n'oubliez pas de toujours couper vers l'extérieur, jamais vers vous). L'utilisation d'outils ou de colle doit se faire sous la surveillance d'un adulte.

**ESPAÑOL** • Antes de montar este kit, lee las instrucciones cuidadosamente. Para el montaje necesitas un pegamento para los componentes de metal y plástico y una cuchilla de modelismo. También puedes usar unas tenacillas para desmontar los componentes de la matriz. Retira las líneas de molde y rebabas con la ayuda de una cuchilla de modelismo (para evitar accidentes, recuerda siempre hacerlo en dirección contraria a tu cuerpo). Se recomienda la supervisión de un adulto al usar el pegamento y las herramientas.

**DEUTSCH** • Vor dem Zusammenbau deines Modells solltest du dir dieses Bauanleitung genau durchlesen. Um diesen Bausatz zusammenzubauen, benötigst du passenden Klebstoff für die Metall sowie Plastteile sowie ein scharfes Bastelmesser. Eine Kneitzange ist ebenfalls nützlich. Entferne die Einzelteile mit der Kneitzange aus dem Gusstrahmen und säubere sie mit dem Bastelmesser sorgfältig von allen Gussresten und giebten (denk daran, immer von Körper und Fingern weg zu schneiden!). Kinder sollten Klebstoff und Werkzeuge nur unter Aufsicht eines Erwachsenen verwenden.

**ITALIANO** • Prima di assemblare il modello, leggi attentamente queste istruzioni. Per montarlo, avrai bisogno di colle adatte per i componenti di metallo e di plastica e di una taglierina da modellismo affilata. Possono essere utili anche un paio di tronchesine per rimuovere i componenti dallo sprue. Ripulisci attentamente tutte le linee e gli stocchi di fusione con la taglierina (ricordati di usarla verso l'esterno, lontano dal corpo e dalle dita). Si raccomanda la supervisione di un adulto quando si utilizzano colle e strumenti da modellismo.

• 日本語・組み立て説明をよくお読みになつてから、このキットを組み立ててください。このキットを組み立てるには、メタルパーツやプラスチックに適合した接着剤各種とモデリングナイフが必要です。ニツパーも用意しておくこと、ランチャーからパーツを切り離す時に便利です。モデリングナイフを使って、バーチカルラインヤバリを丁寧に削り取って下さい(体や手とは反対方向に刃を向けるようにして下さい)。保護者の監督のもとで、接着剤や工具を使用することを必ずおすすめします。

• KEY • LEGENDE • CLAVE • LÉGENDE • LEGENDA • ФАЙНД ПЪЛНЕ



• DO NOT GLUE!  
• NE PAS COLLER!  
• NO PEGAR!  
• NIET LIJMEN!  
• НЕ ПЛЕТИТИ!  
• 糊を付けないで下さい。



• USE SUPPLANT ADHESIVE  
• UTILISEZ UNE COLLE ADAPTE  
• USA UN PEGAMENTO ADEGUATO  
• VERWILND EEN LIJMSTOF DIE AANWILND  
• ПОСИТЕЛИТЕ СЪОТВЕТСТВУЮЩИ  
• 適切な接着剤をご使用下さい。



• CUT HERE  
• COUPER ICI  
• CORTAR POR AQUÍ  
• SNIJEN BIJ DEZELFDE DEEL  
• СЪОТВЕТСТВУЮЩИ  
• ここを切り離して下さい。



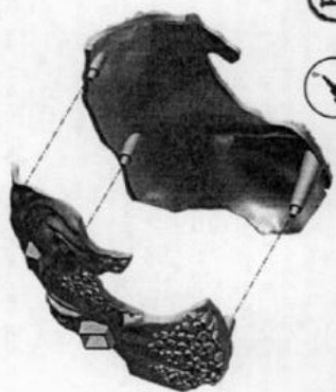
• OPTIONAL EXTRAS  
• OPTIONS SUPPLÉMENTAIRES  
• EXTRAS OPCIONALES  
• ACCESSOIRES OPTIONNELS  
• ОПЦИОНАЛНИ ДЕТАЛИ  
• オプションパーツ



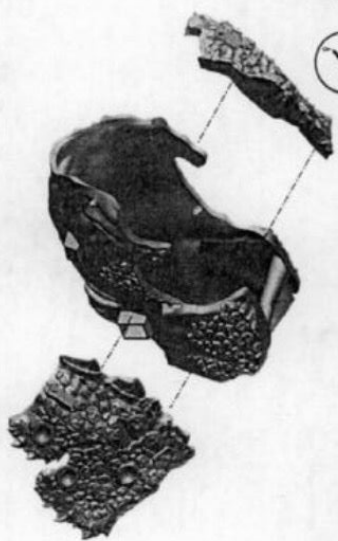
• IMPORTANT INFORMATION  
• INFORMATION IMPORTANTE  
• IMPORTANTE INFORMAZIONI  
• BELANGRIJKE INFORMATIE  
• ВАЖНА ИНФОРМАЦИЯ  
• 重要な情報



1a



1b



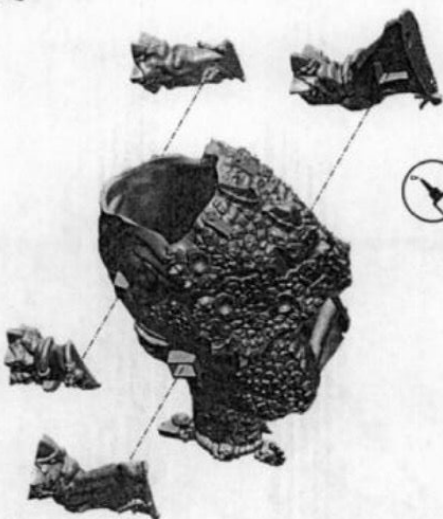
1c



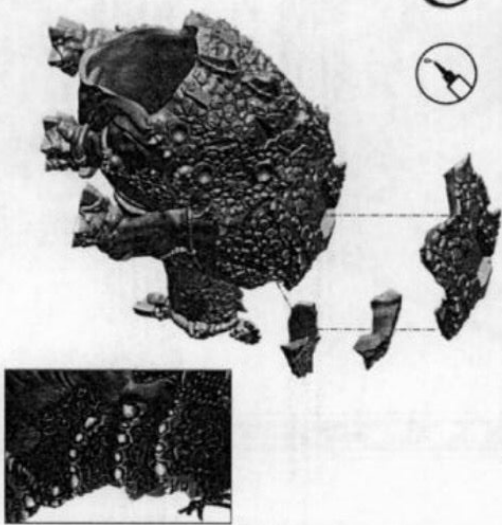
2a



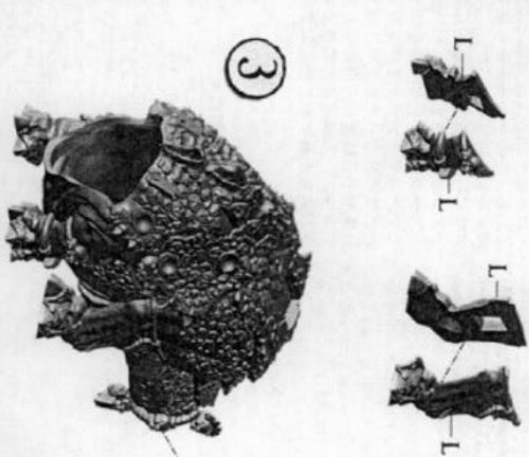
2b



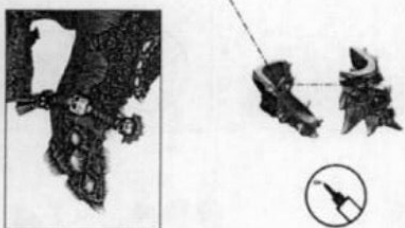
2c



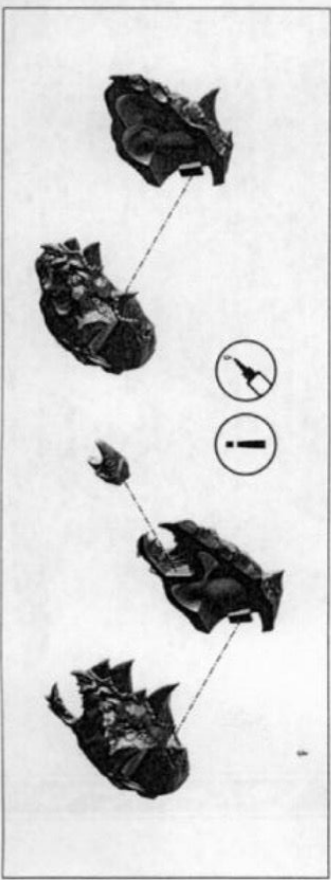
3



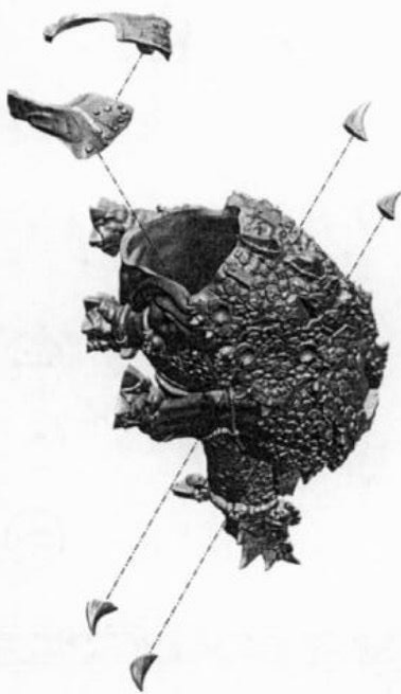
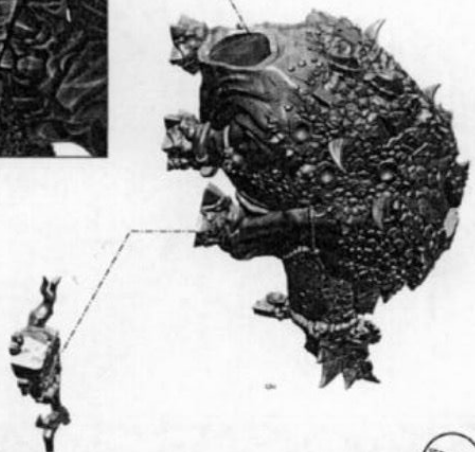
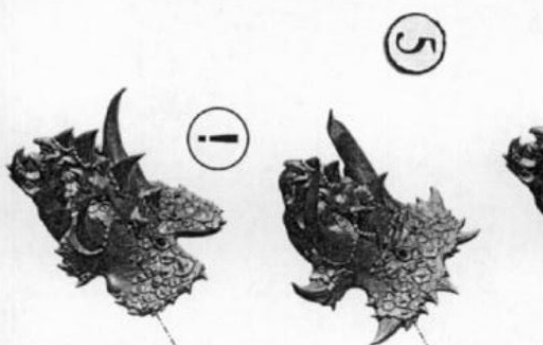
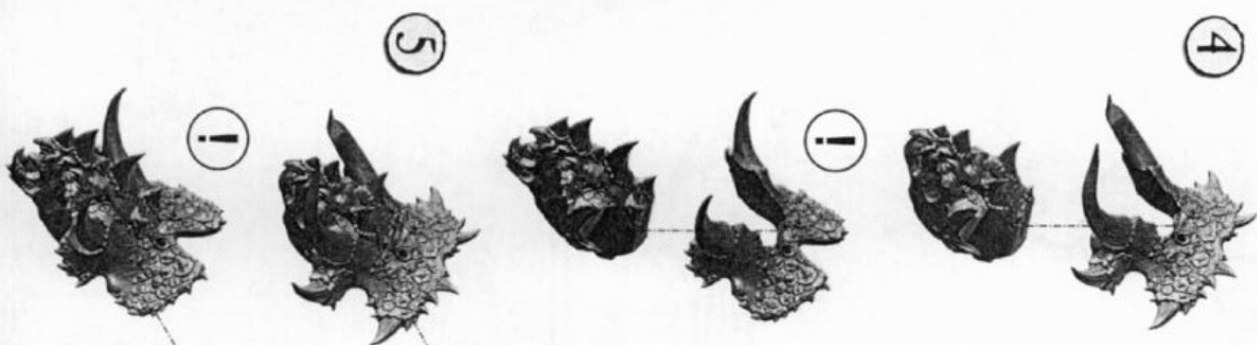
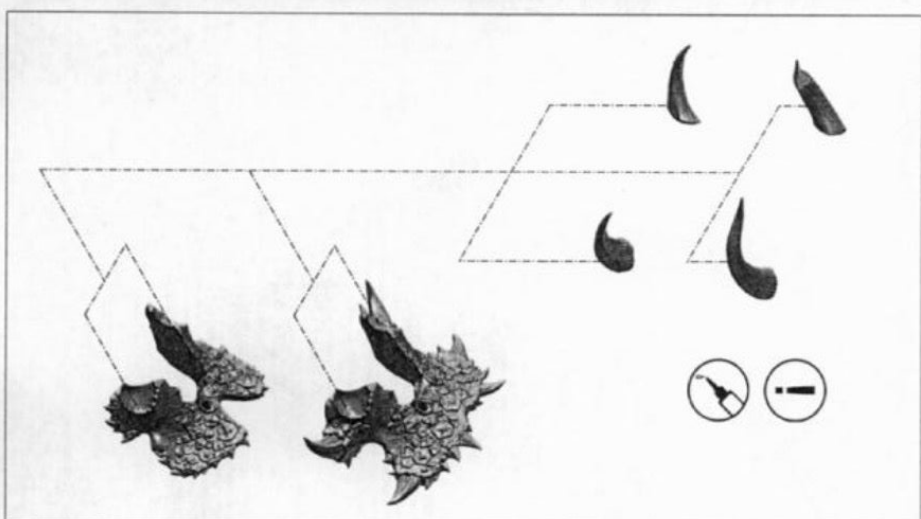
3



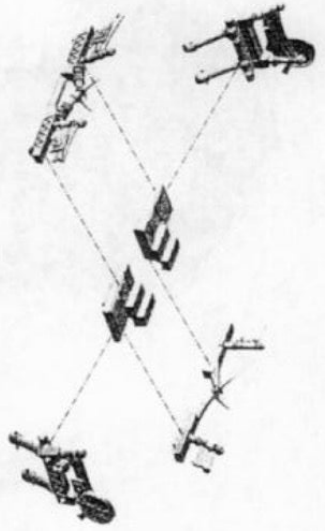
3







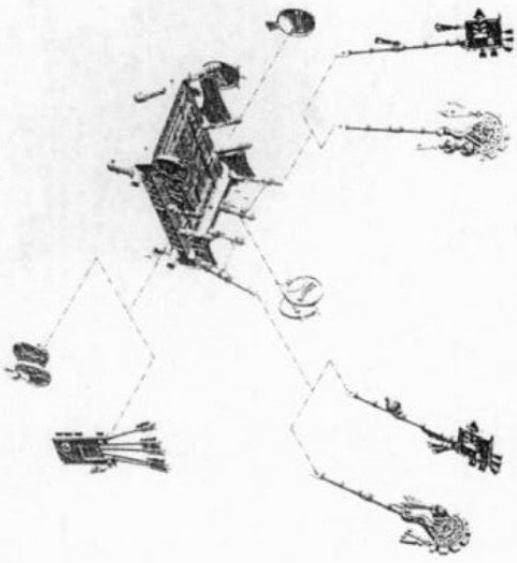
6



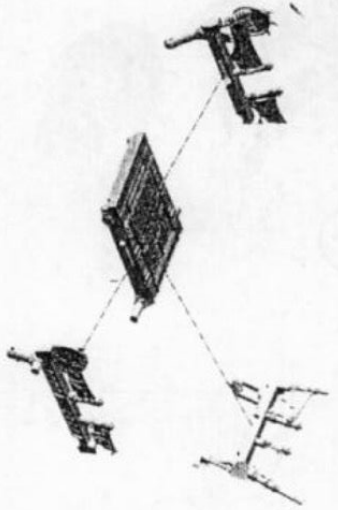
9



i



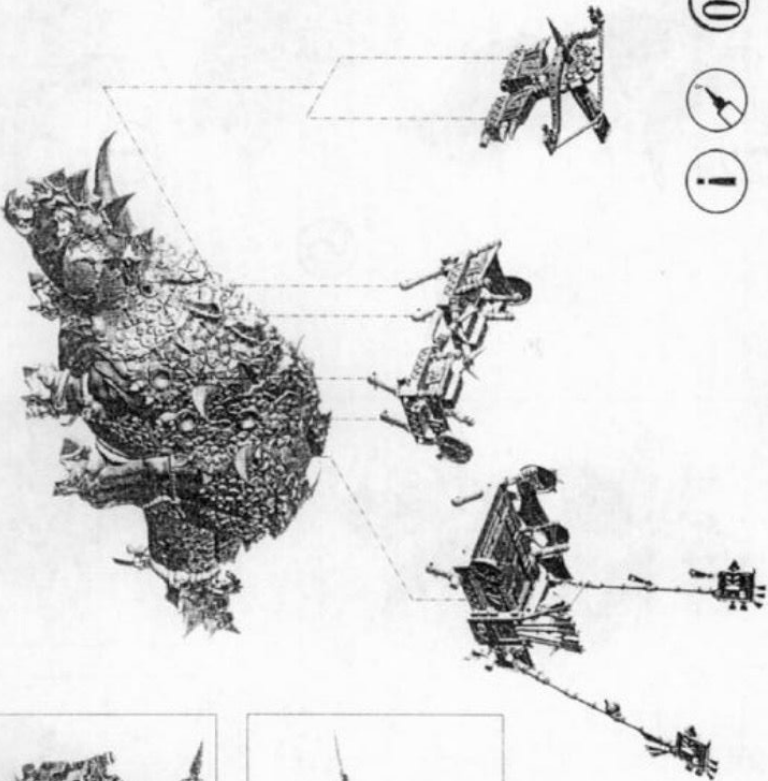
7



10



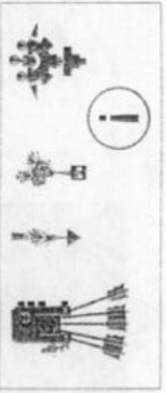
i



8



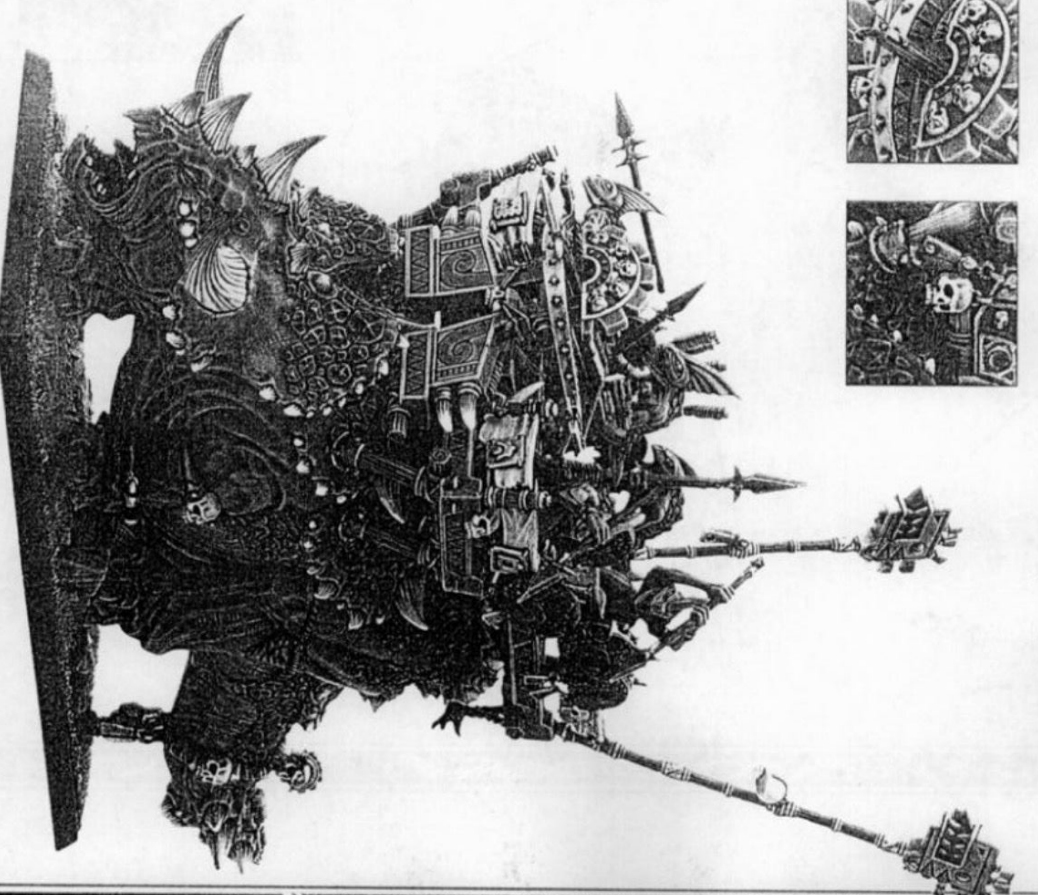
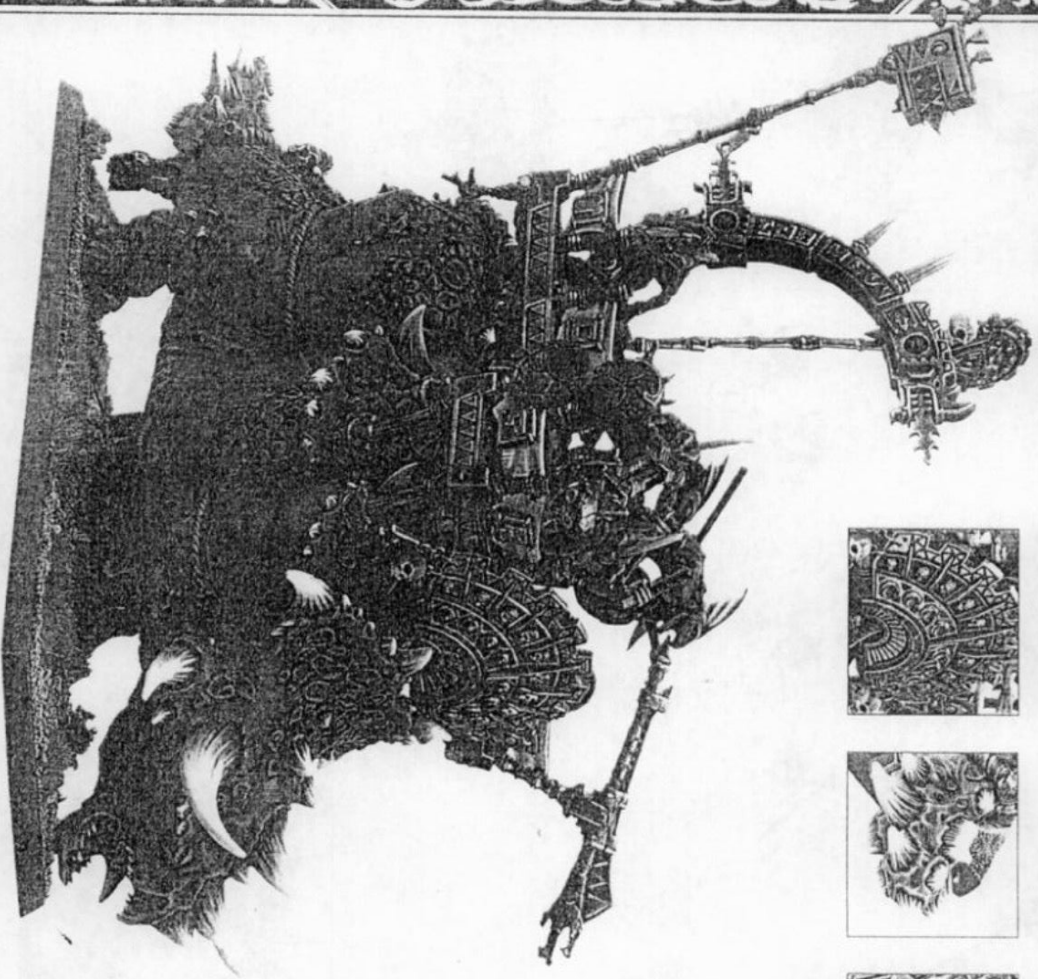
i



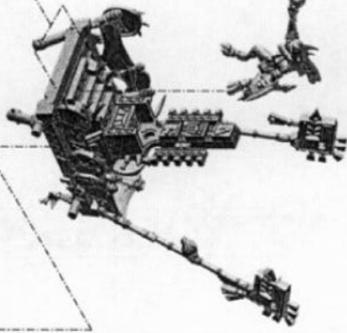
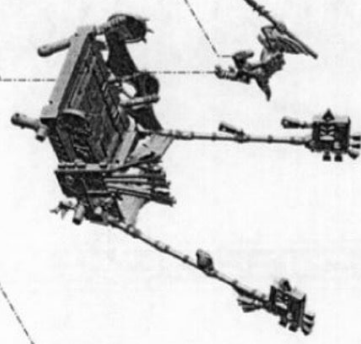
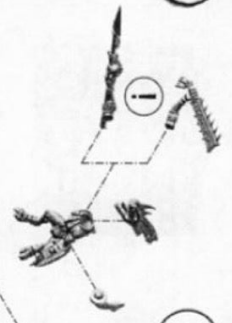
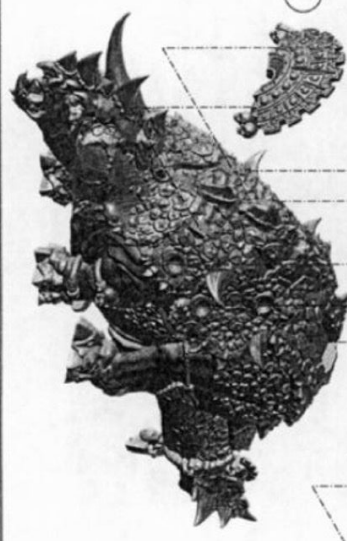
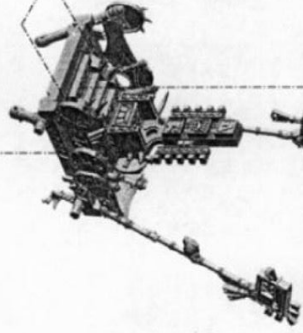
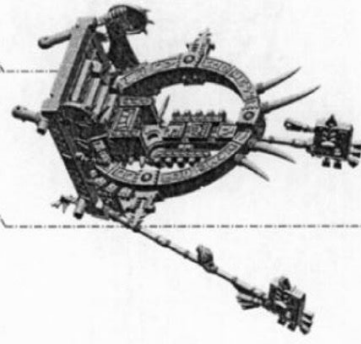
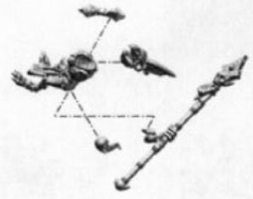
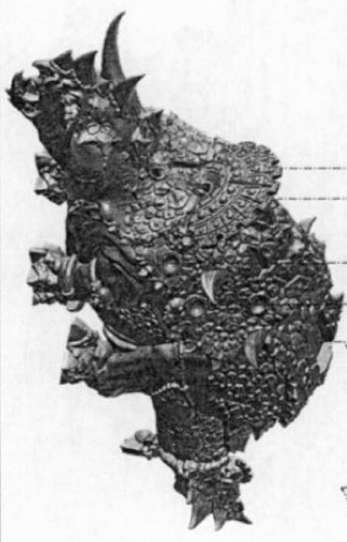
i

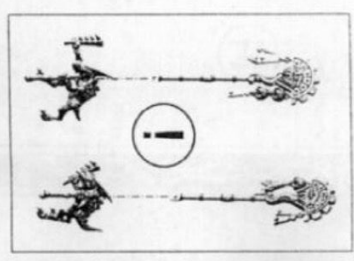
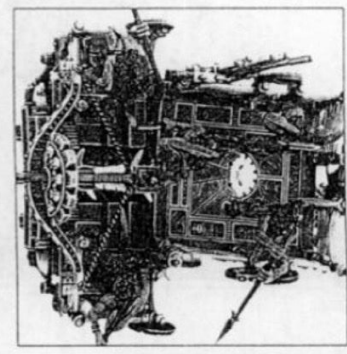
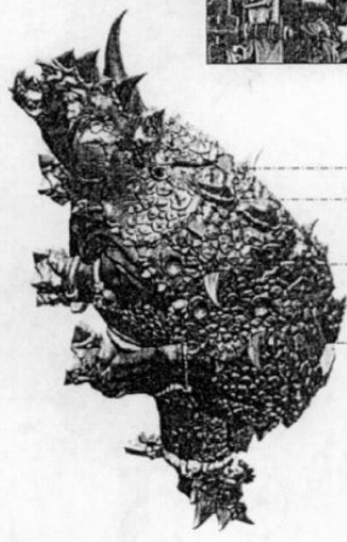
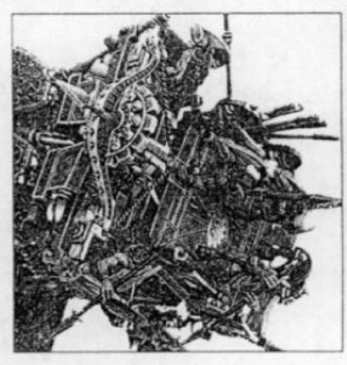
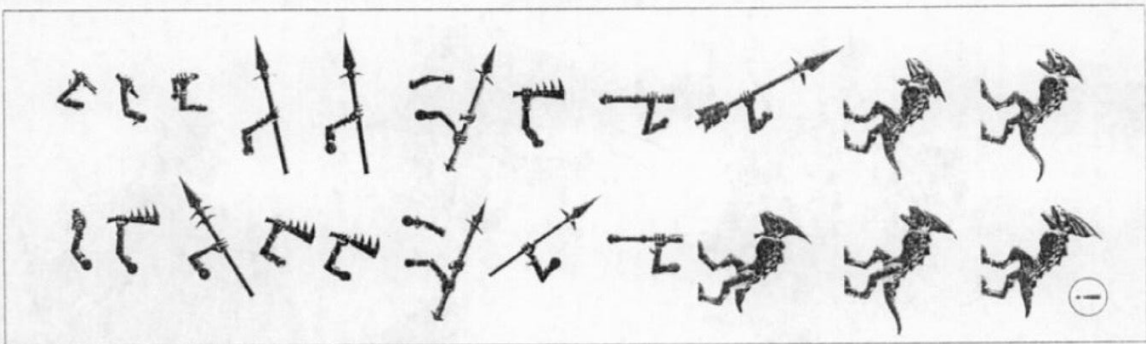










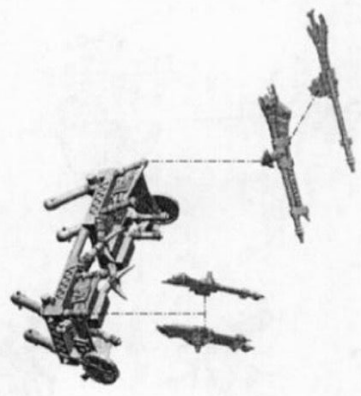




11



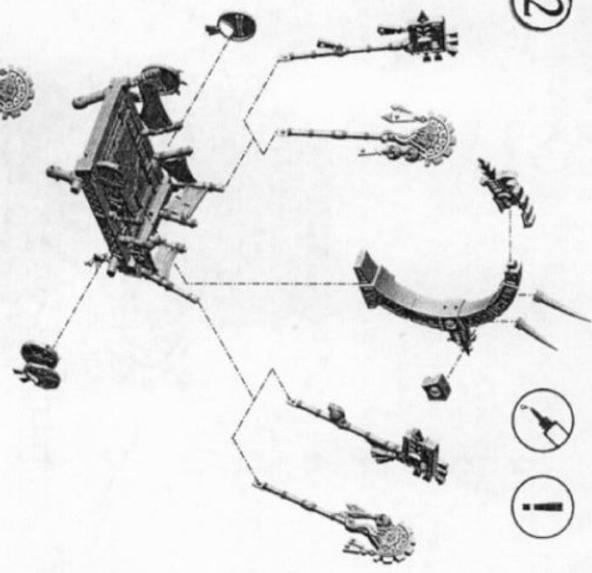
1



12



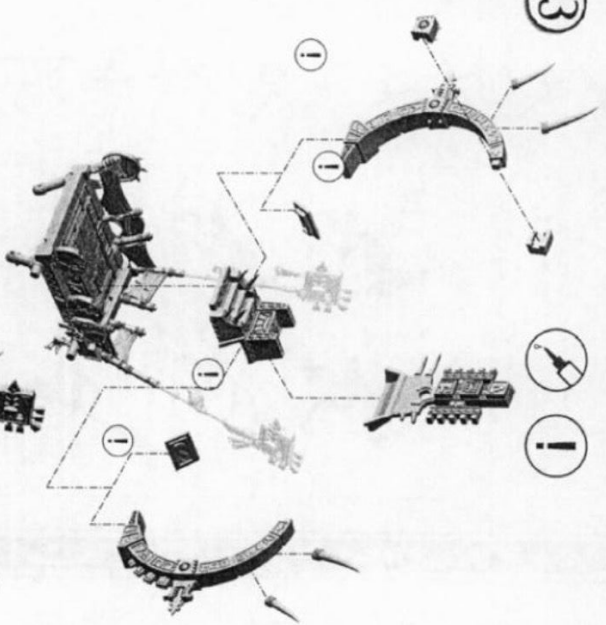
1



13



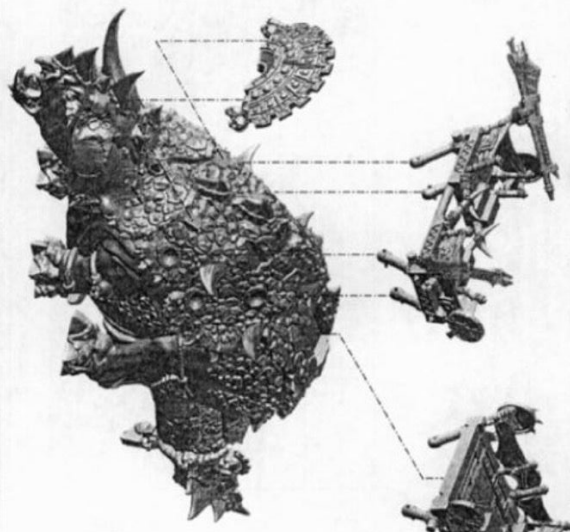
1



14



1



15



1

