

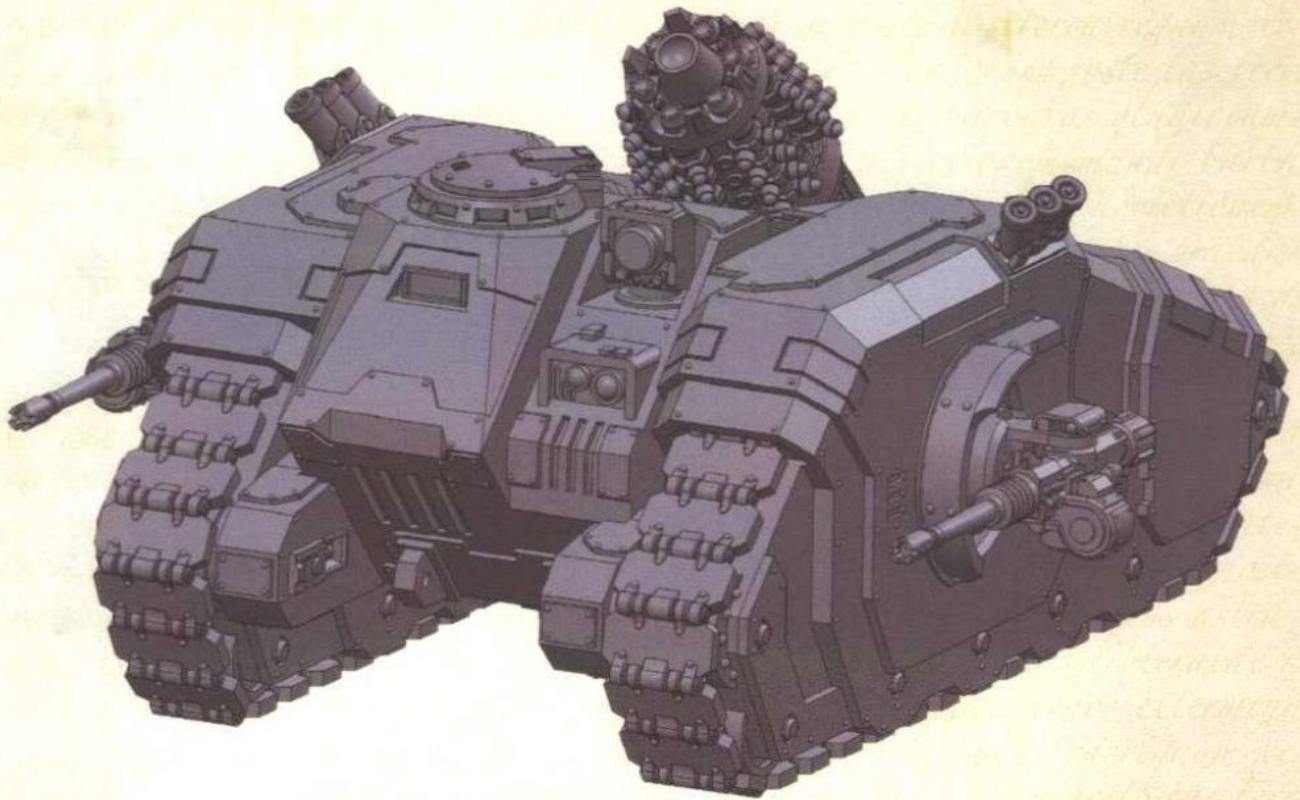


Free Downloads of Build Instructions,
Assembly Booklets & How To Guides

BuildInstructions.com

LEGION ARQUITOR BOMBARD WITH GRAVITON CHARGE CANNON

The Legion Arquitor pattern Bombard is a heavy artillery platform designed to operate at the forefront of a Legiones Astartes advance. Equipped with a reinforced chassis and possessing brutal short-range firepower, it is called upon to break the most stubborn of fortifications or to annihilate massed enemy infantry and armour. The heavy weapons most often carried by the indomitable Arquitor Bombard are more than capable of removing any obstacle to the advance of a Space Marine host in a series of devastating explosions.



THIS IS NOT A TOY

Not suitable for children under 15 years of age.

WARNING: Resin dust can be harmful if inhaled. Always wear a dust mask or respirator when sanding or sawing resin parts.

www.forgeworld.co.uk

Forge World

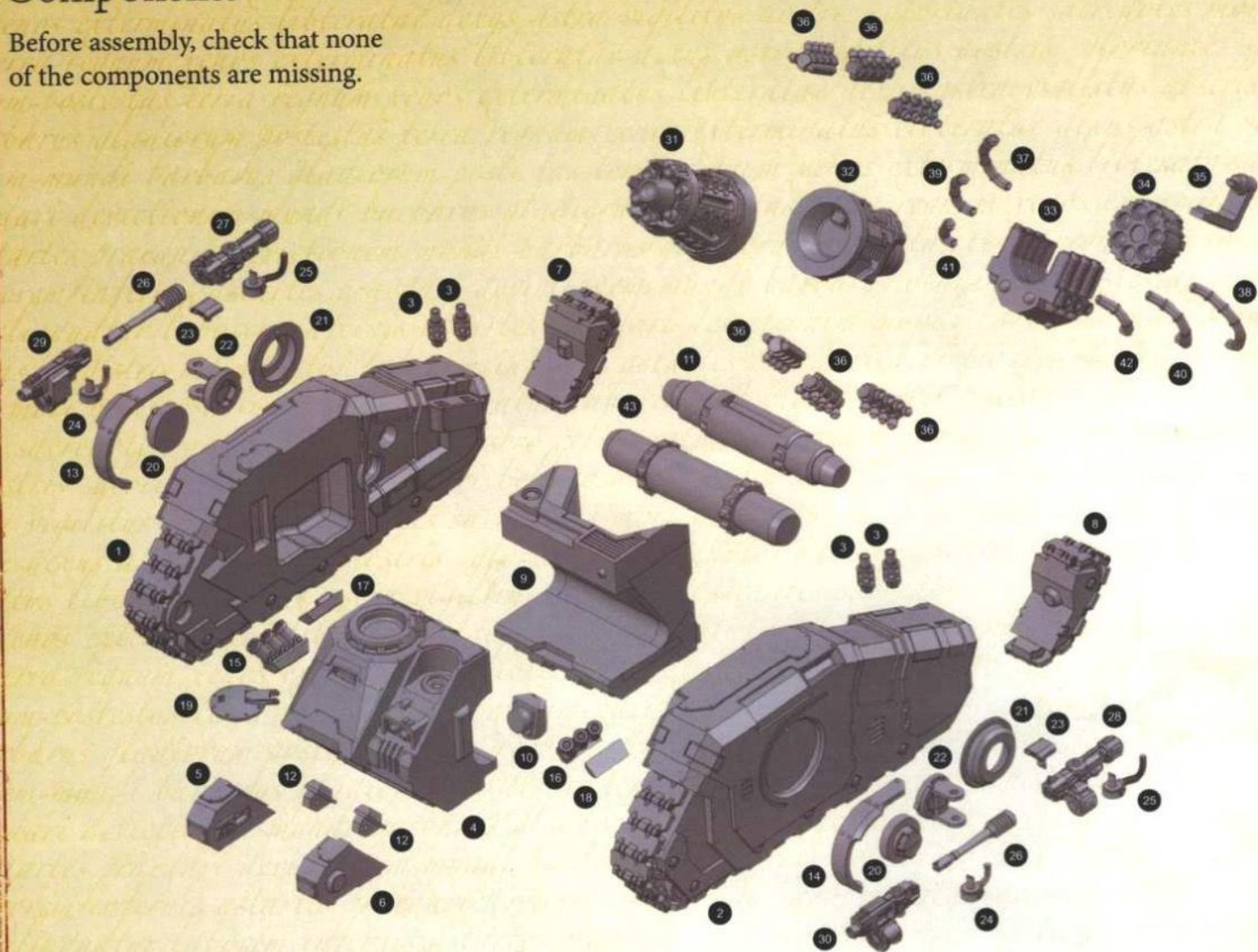


993230010034 R01



Components

Before assembly, check that none of the components are missing.



Assembly Legend

Parts for Assembly



Note



Glue Contact Area



Shim for Removal



Reverse Angle



Do Not Glue



Insert



Hidden Component



Component Highlight



Preparing the Model for Assembly

Before assembling the model, wash each part thoroughly with an abrasive brush, such as a toothbrush, to remove any model release agent that may still be on the surface of the parts. Then, remove any excess resin such as mould lines, casting gates, vents and shims. For a more detailed guide to working with resin models, go to the Downloads section of the Forge World website.

This kit contains all the pieces required to construct the Legion Arquitor Bombard with Graviton Charge Cannon. To glue the resin pieces together, use Citadel Super Glue.

NOTE: We have cast this kit using advanced techniques and the best quality resin, but due to the nature of the casting process, your model may contain small air bubbles. These can easily be filled with model filler or super glue. Any slight warpage of thin parts can be corrected by immersing the part in hot water for about 1 minute, then bending it back into shape.

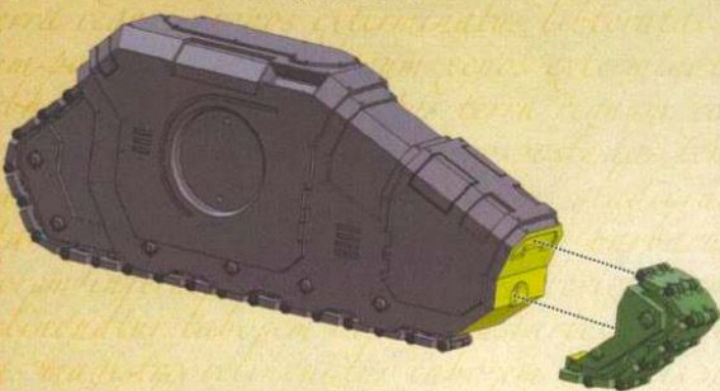
- | | | |
|---------------------------|--------------------------------------|--------------------------------------|
| 1. Right Track Unit | 17. Right Grab Handle | 31. Graviton Charge
Cannon Barrel |
| 2. Left Track Unit | 18. Blanking Plate | 32. Graviton Charge Cannon |
| 3. Exhaust x4 | 19. Hatch | 33. Graviton Stabiliser |
| 4. Front Hull | 20. Sponson Hub x2 | 34. Graviton Charge Magazine |
| 5. Right Drive Unit | 21. Sponson Turret x2 | 35. Magazine Mount |
| 6. Left Drive Unit | 22. Sponson Mount x2 | 36. Graviton Accelerators x6 |
| 7. Right Rear Track Links | 23. Targeter x2 | 37. Right Large Cable |
| 8. Left Rear Track Links | 24. Heavy Bolter
Power Cabling x2 | 38. Left Large Cable |
| 9. Rear Hull | 25. Autocannon
Power Cabling x2 | 39. Right Medium Cable |
| 10. Front Sensor | 26. Autocannon Barrel x2 | 40. Left Medium Cable |
| 11. Elevation Pivot | 27. Right Autocannon | 41. Right Small Cable |
| 12. Tow Loop x2 | 28. Left Autocannon | 42. Left Small Cable |
| 13. Right Sponson Shield | 29. Right Heavy Bolter | 43. Elevation Crank |
| 14. Left Sponson Shield | 30. Left Heavy Bolter | |
| 15. Right Smoke Launchers | | |
| 16. Left Smoke Launchers | | |



If you need to contact the Forge World Customer Service team regarding this model, you can get in touch via email – forgeworld@gwplc.com – or call:
 0115 900 4995 within the UK
 011 44 115 900 4995 from the USA and Canada
 0011 44 115 900 4995 from Australia
 00 44 115 900 4995 from Europe and the rest of the world.

I

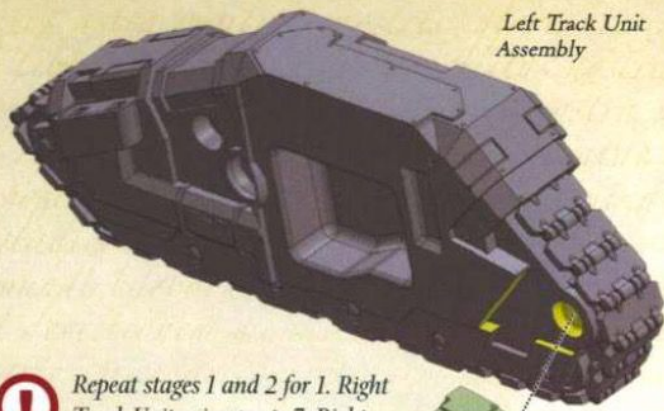
2. Left Track Unit



8. Left Rear Track Links

2

Left Track Unit Assembly

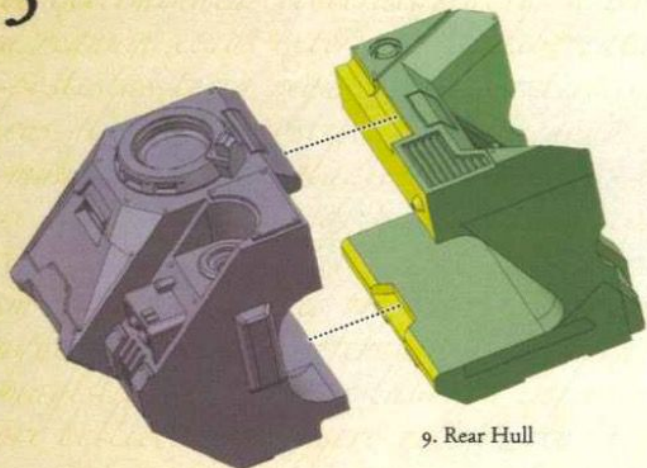


Repeat stages 1 and 2 for 1. Right Track Unit using parts 7. Right Rear Track Links and 5. Right Drive Unit.

6. Left Drive Unit



3

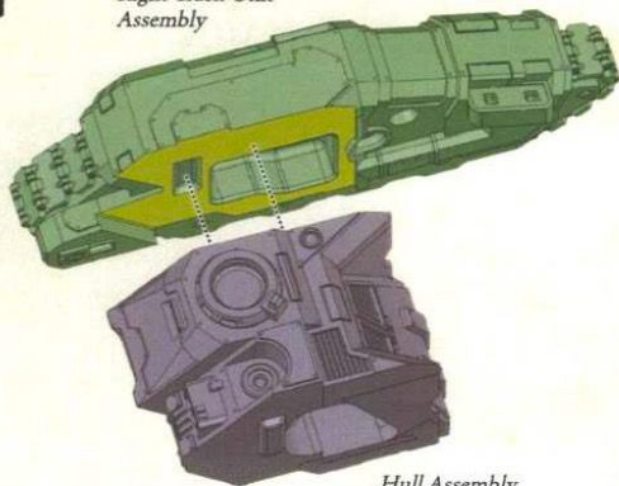


4. Front Hull

9. Rear Hull

4

Right Track Unit Assembly



Hull Assembly

5

11. Elevation Pivot



33. Graviton Stabiliser

6

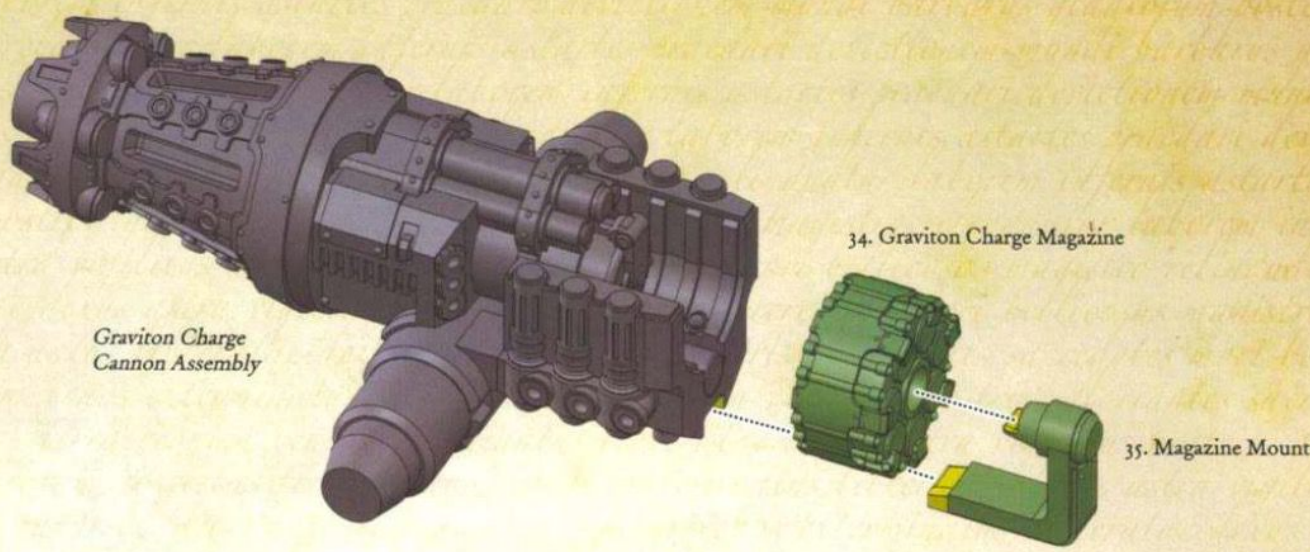
31. Graviton Charge Cannon Barrel



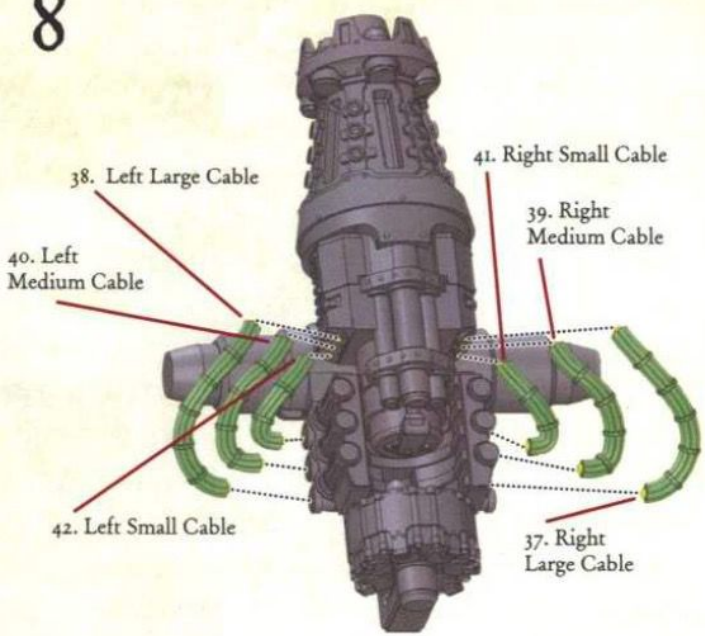
32. Graviton Charge Cannon

Graviton Charge Cannon Assembly

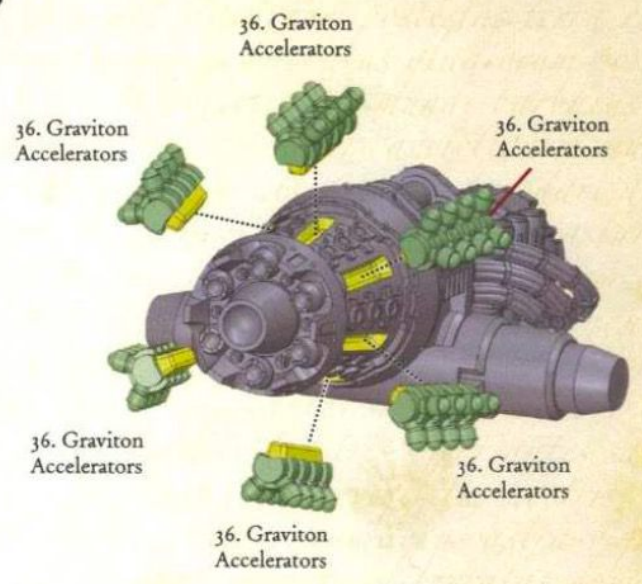
7



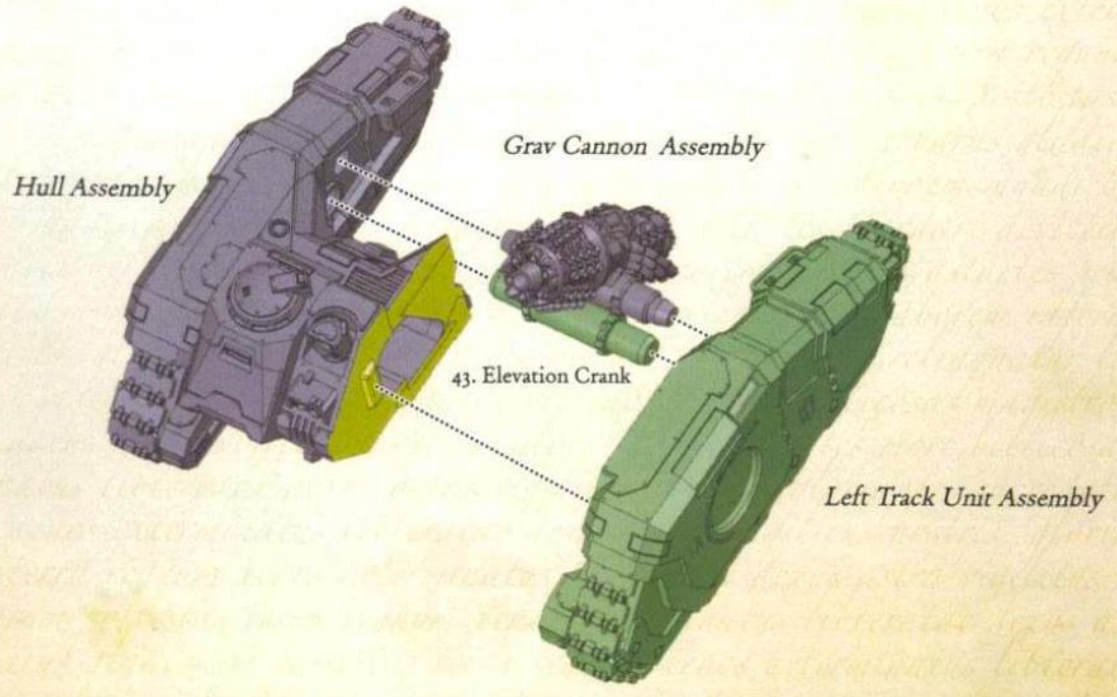
8



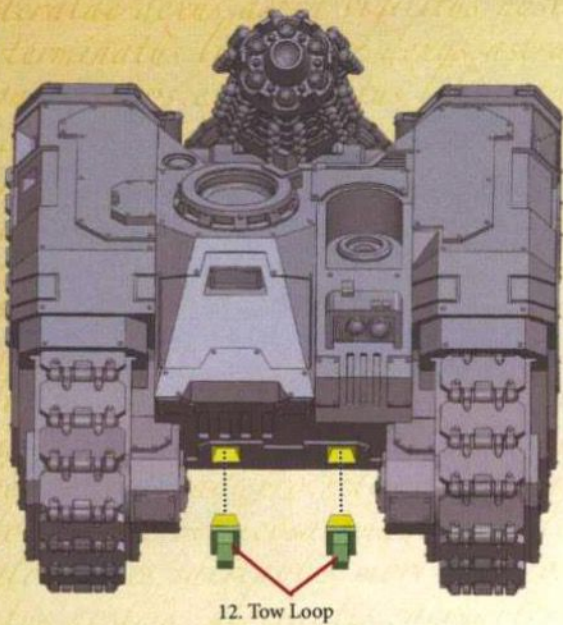
9



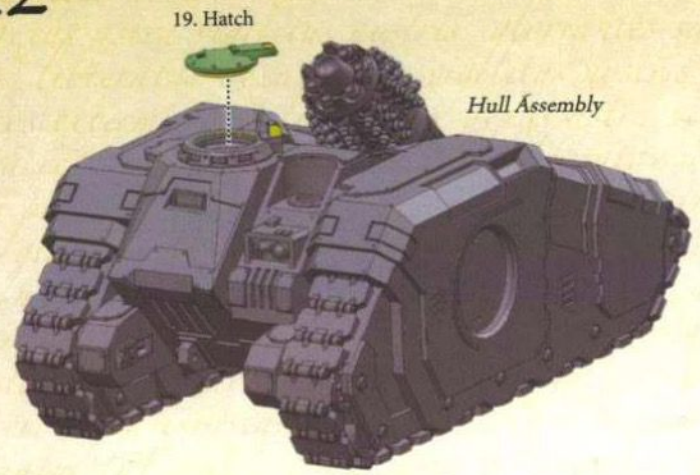
10



II



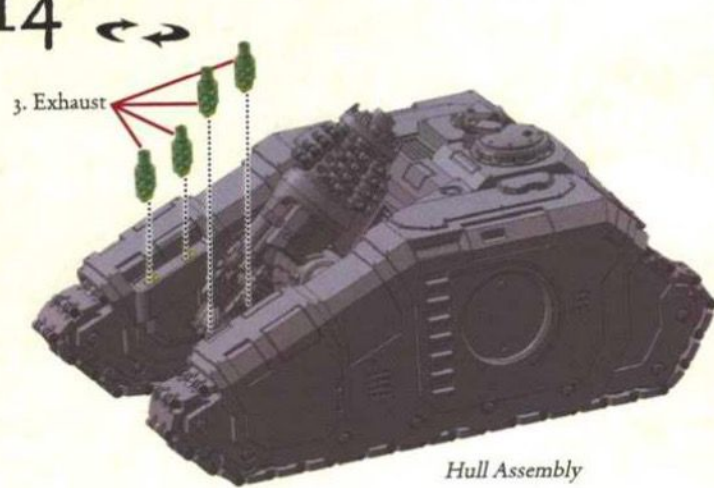
I2



I3



I4

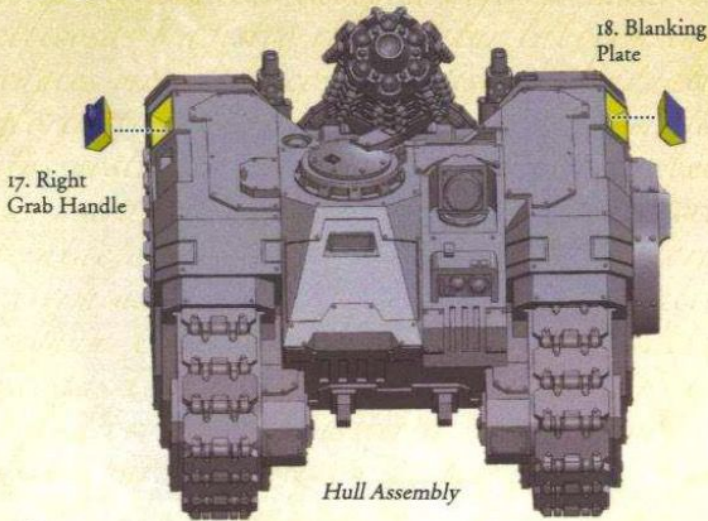


I5

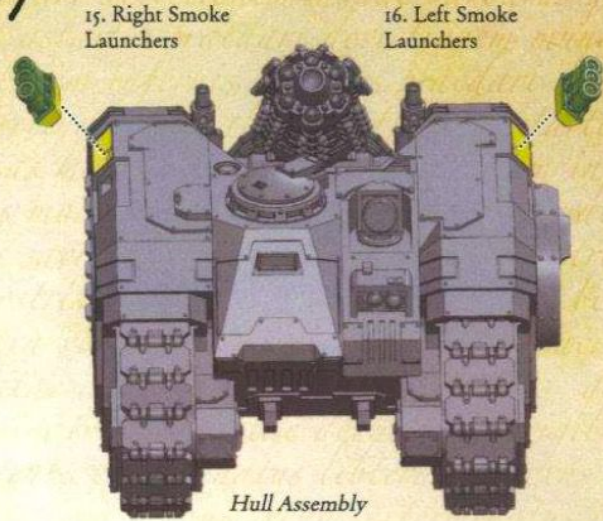


! Repeat for the right hand side using I3. Right Sponson Shield.

16



17

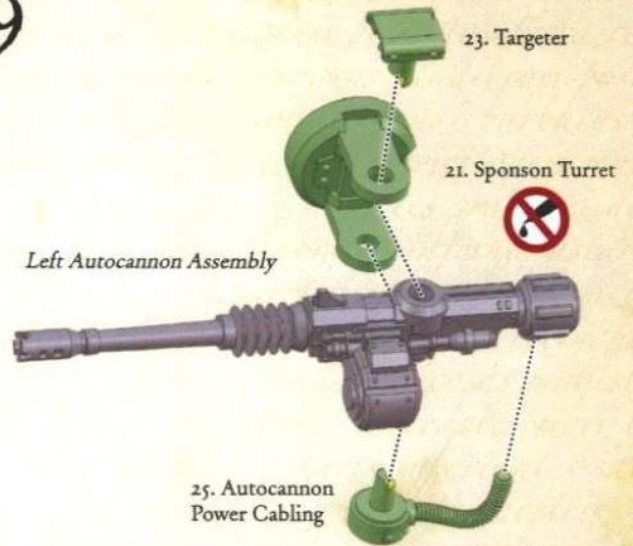


18



The Legion Arqitor Bombard comes with a choice of either Autocannon or Heavy Bolter Sponson weapons. Skip to stage 21 if you wish to build the Heavy Bolter Sponsons.

19



The Targeter and the Autocannon Power Cable should be glued into the body of the Autocannon Assembly. Avoid getting glue onto the Sponson Turret itself so the weapon will traverse.

20

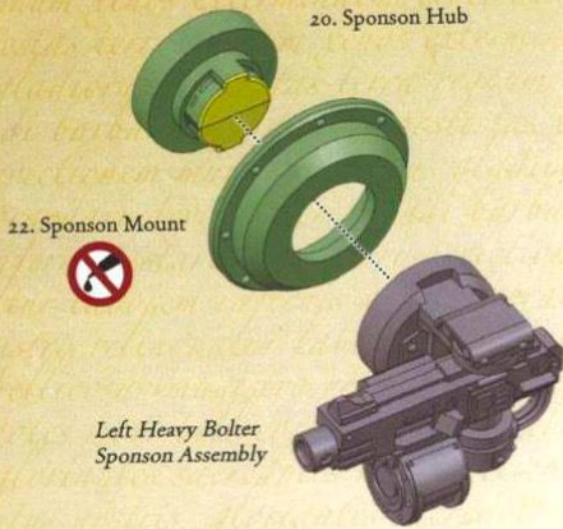


Repeat stages 18 to 20 for the right Autocannon Sponson Turret using part 27. Right Autocannon.

21

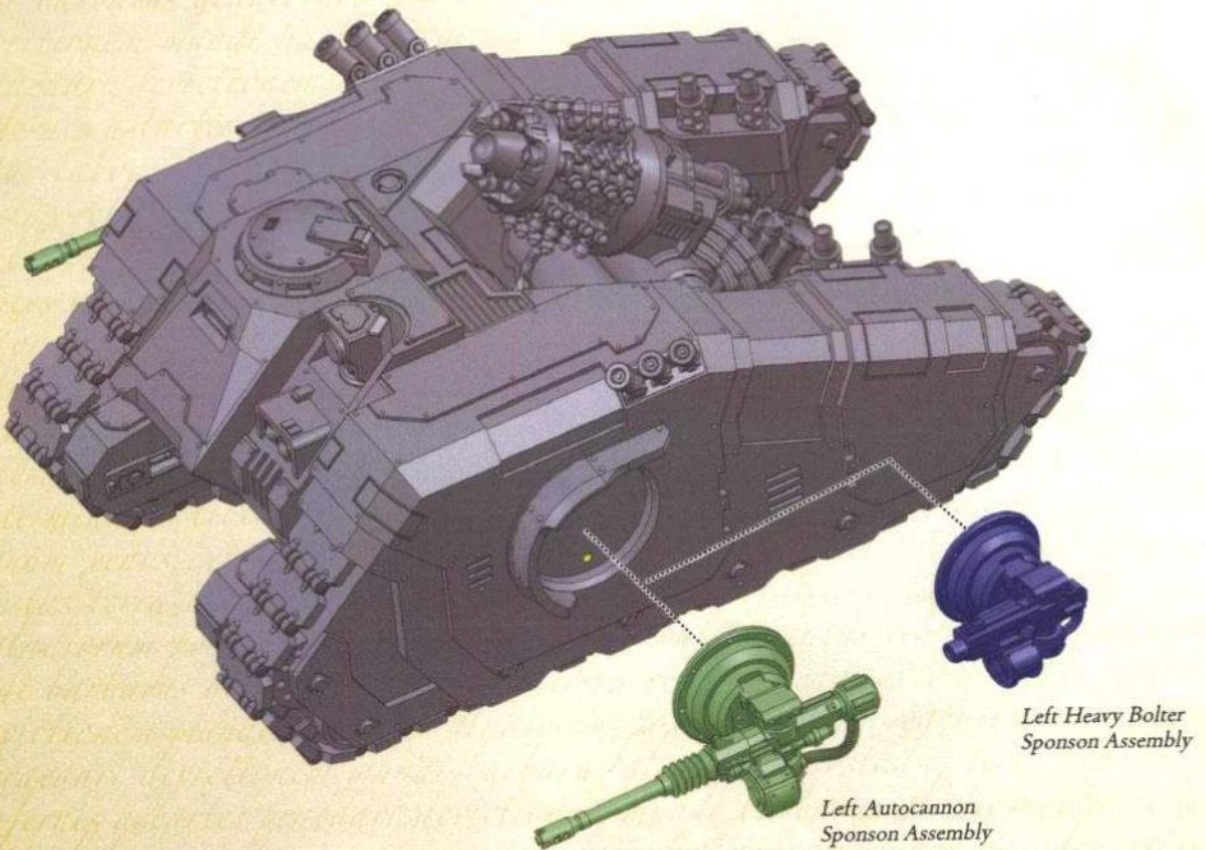


22



! Repeat stages 21 and 22 for 29. Right Heavy Bolter.

23



! Attach via 22. Sponson Mount only. This should allow 20. Sponson Hub to spin, enabling the sponson weapon to elevate and depress.