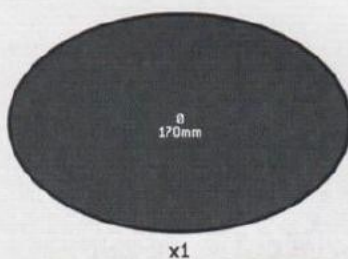




Free Downloads of Build Instructions,
Assembly Booklets & How To Guides

BuildInstructions.com



CHOOSE THE VARIANT YOU WANT TO BUILD | CHOISISSEZ LA VARIANTE À ASSEMBLER | ELIGE QUÉ VERSION QUIERES MONTAR

WÄHLE DIE VARIANTE, DIE DU BAUEN MÖCHTEST | SCEGLI LA VARIANTE CHE VUOI ASSEMBLARE | 組み立てバリエーションの選択 | 选择你喜欢的拼装方式



STEPS | ÉTAPES | PASOS | SCHRITTE | FASI | ステップ | 步骤

1 - 10

KILL RIG

KARIOL'KITU | PLATAFORMA | KILLAKUTSCHE
MAKKINA AZZAZZINA | キルリグ | 杀戮战车



STEPS | ÉTAPES | PASOS | SCHRITTE | FASI | ステップ | 步骤

1 - 8 ; 11

HUNTA RIG

KARIOL'KICHASS'
CAZAFORKMA
JĀGAKUTSCHE
MAKKINA DA KACCIA
ハンタリグ
狩猎战车





- Special instruction - Please read
- Instructions spéciales - Lire attentivement
- Instrucción especial: Por favor, léela
- Besondere Anweisung - Bitte lesen
- Istruzioni speciali - Leggi attentamente
- 特記事項 - 必ずお読みください
- 特殊说明 - 请详阅



- Dry fit stage before gluing
- Tester avant de coller
- Comprobar el encaje antes de pegar
- Positionierung erst ohne Klebstoff ausprobieren
- Prova a secco prima di incollare
- 接着前にぴったり合わせること
- 粘接前的假组阶段



- Do not glue the components
- Ne pas coller les éléments
- No pegar los componentes
- Bitte die Teile nicht kleben
- Non incollare i componenti
- このパーツは接着不可
- 请勿粘接



- Paint before assembly
- Peindre avant assemblage
- Pintar antes del montaje
- Erst bemalen, dann zusammenbauen
- Dipingi prima dell'assemblaggio
- 組み立て前にペイントすること
- 组装前涂装

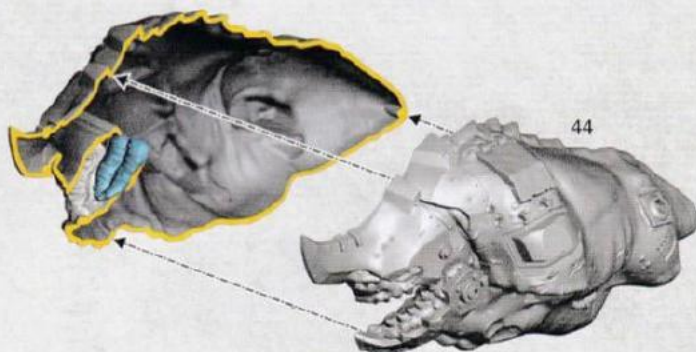
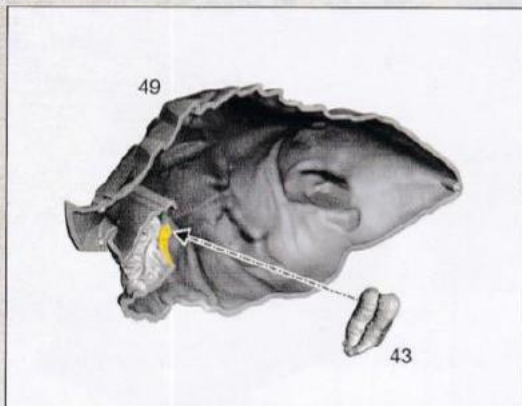


- Variant assembly
- Variante d'assemblage
- Variante de montaje
- Bauvariante
- Assemblaggio alternativo
- 組み立てバリエーション
- 多种组装方式

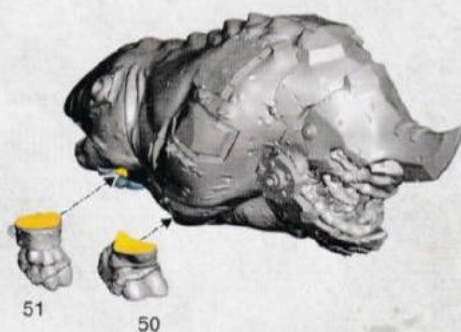
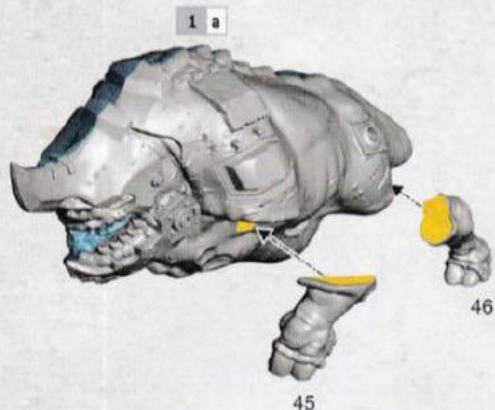


- Stage complete
- Etape terminée
- Paso completado
- Schritt abgeschlossen
- Fase completa
- このステージの完成
- 完成

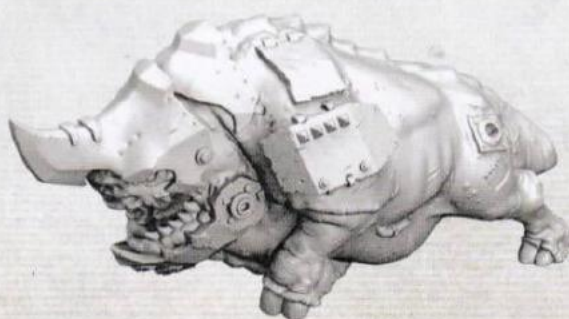
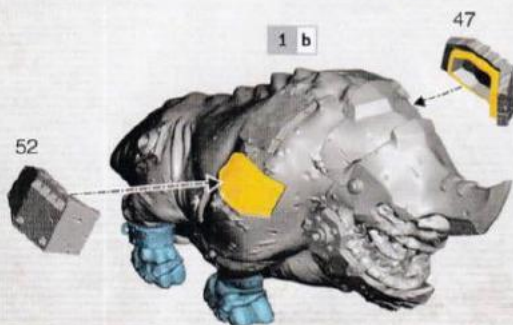
1 a



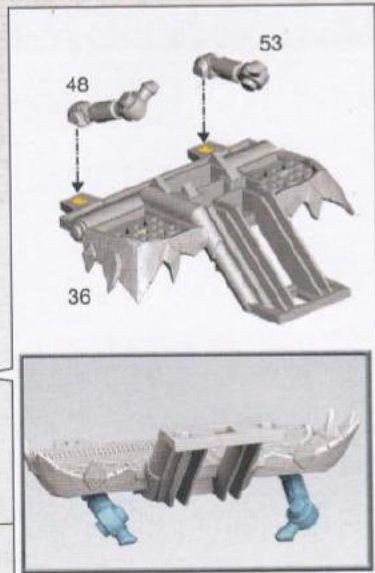
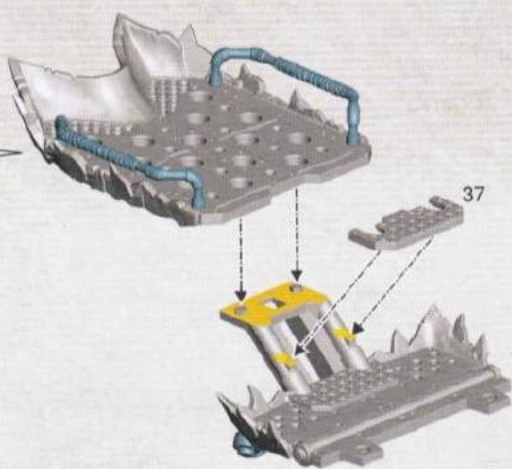
1 b



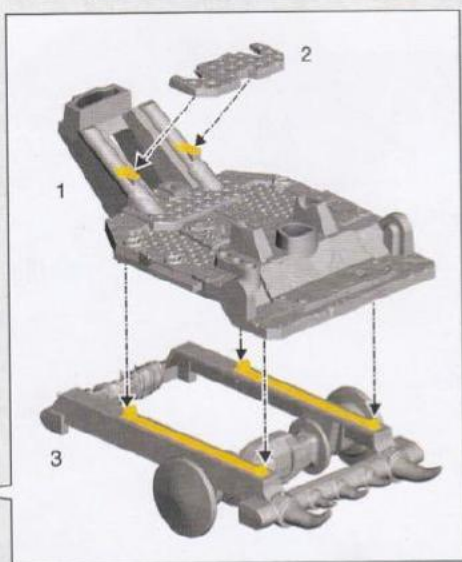
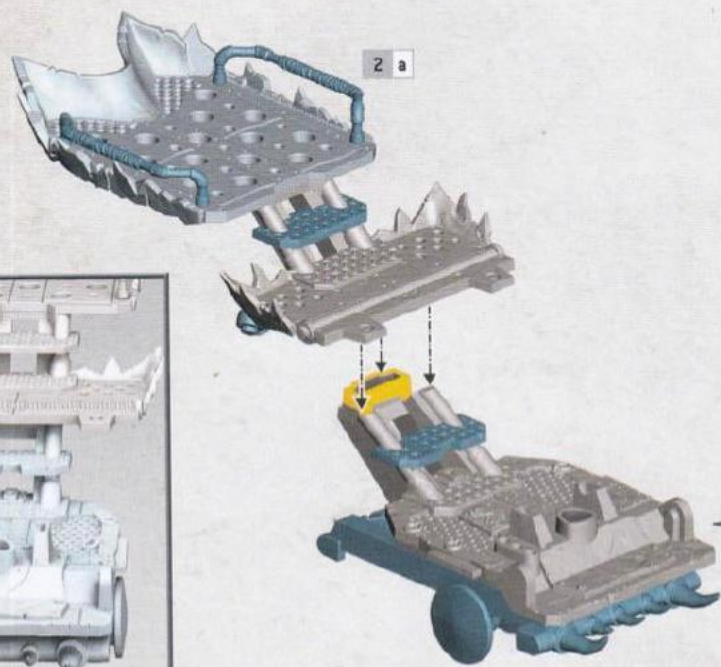
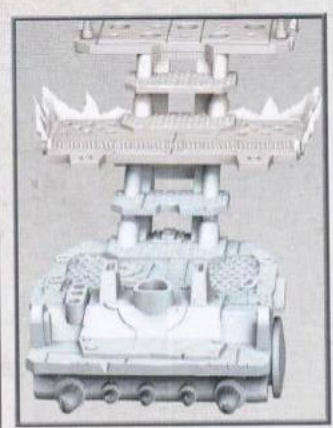
1 c



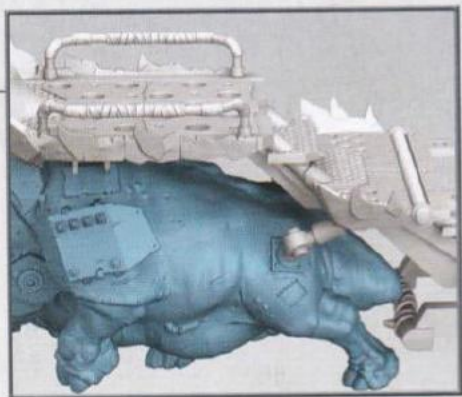
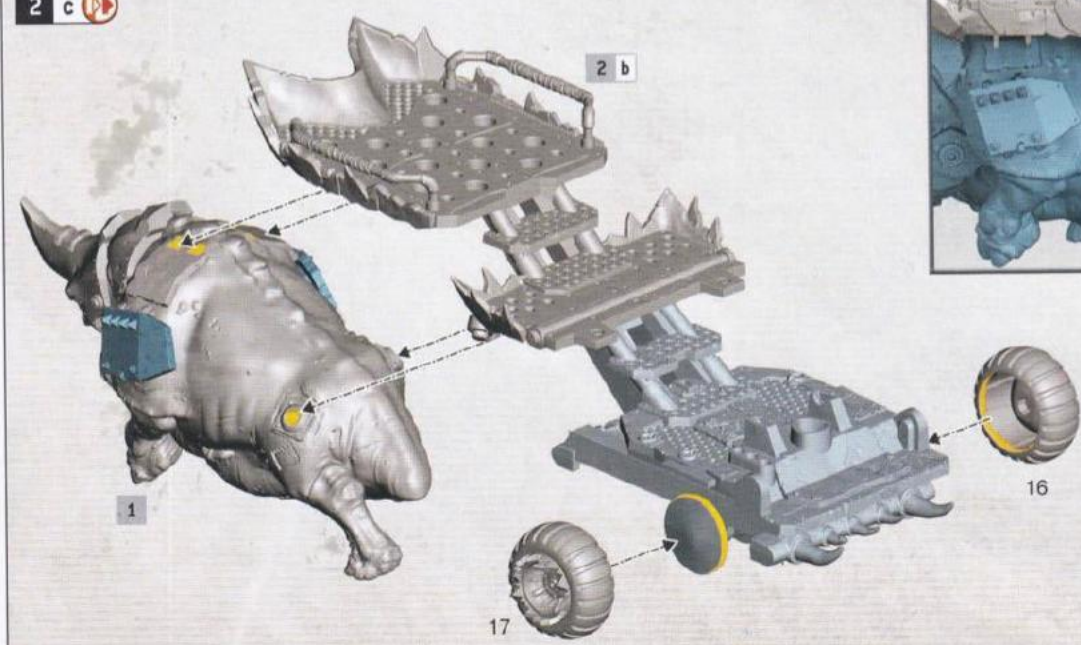
2 a



2 b

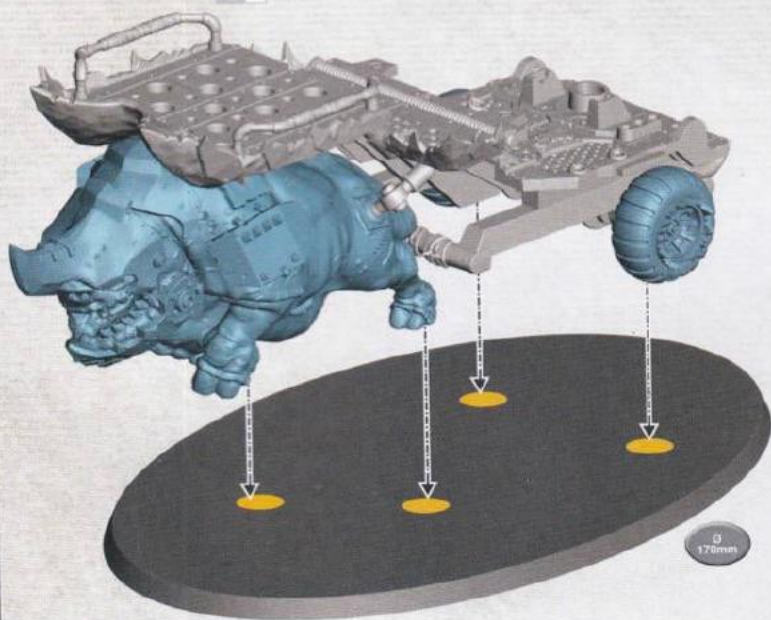


2 c

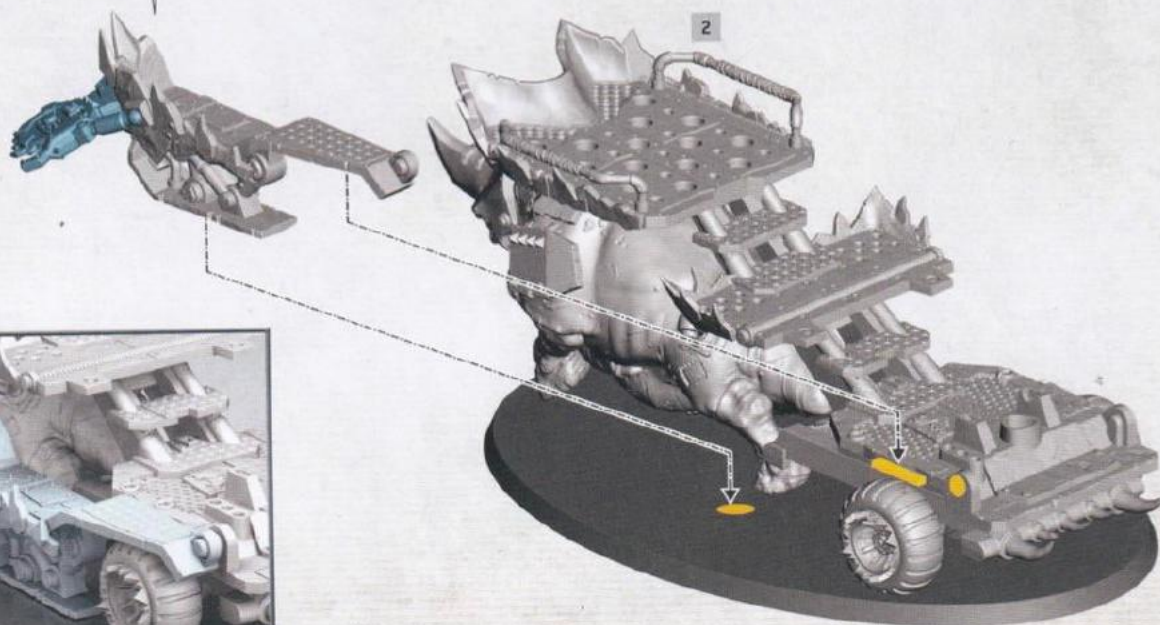
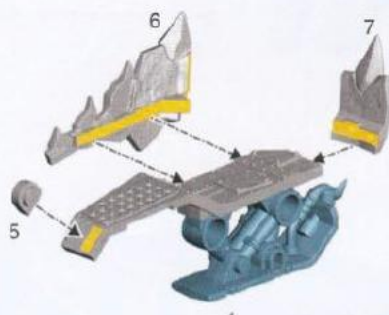


2 d

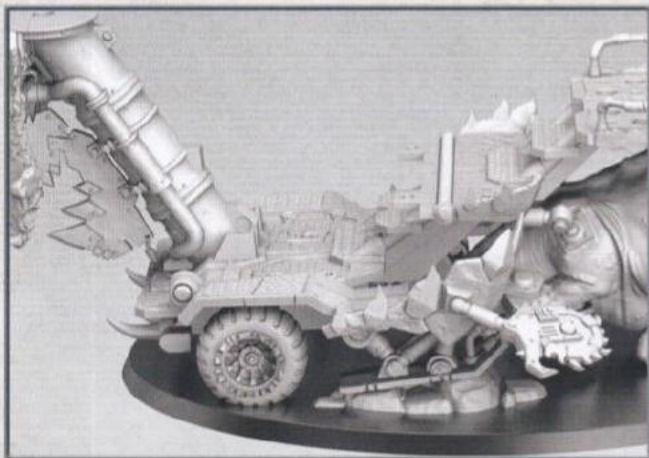
2 c



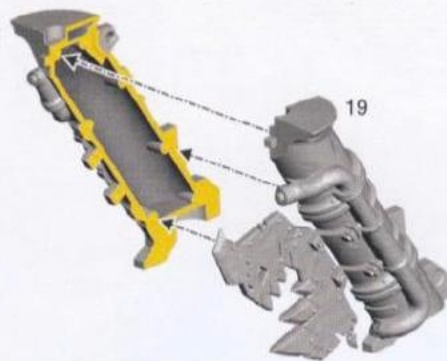
3 a



3 b

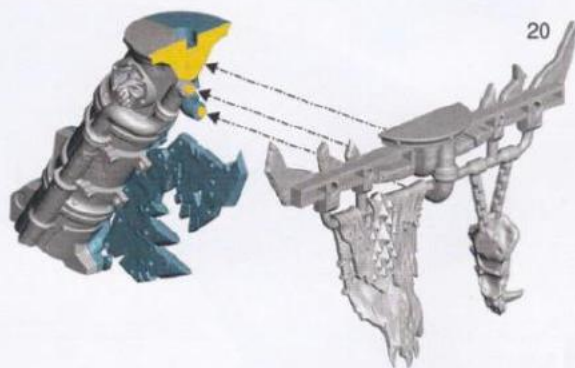


18

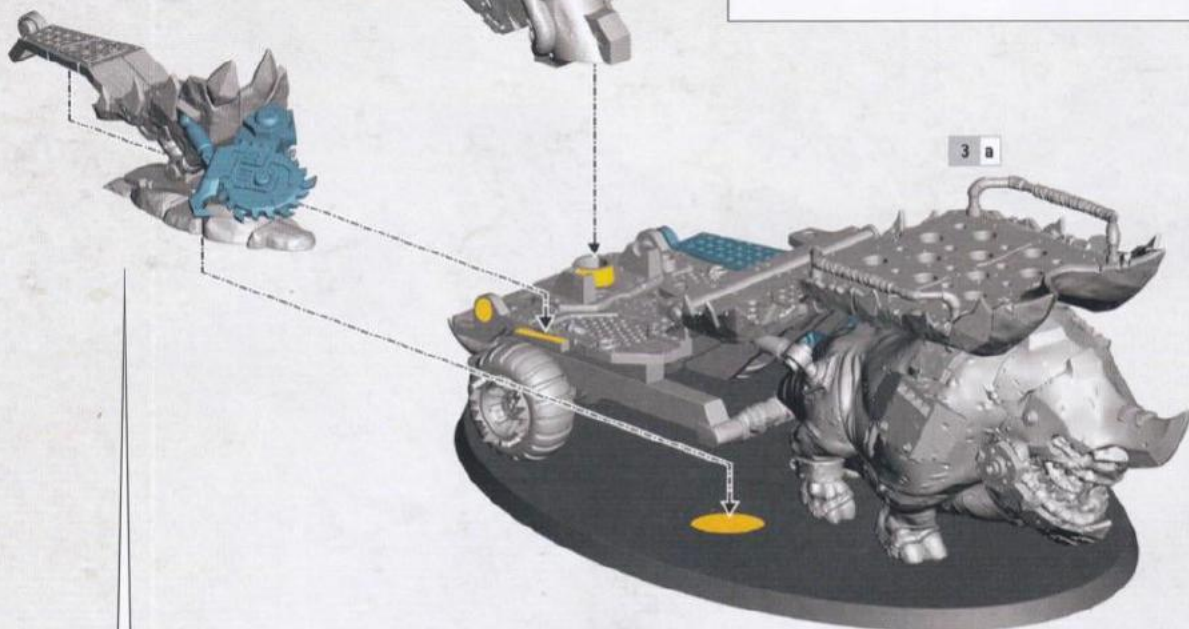


19

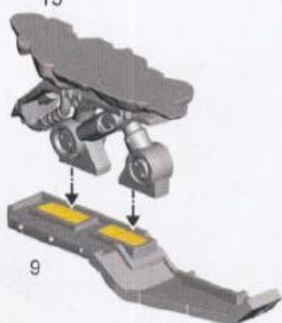
20



3 a



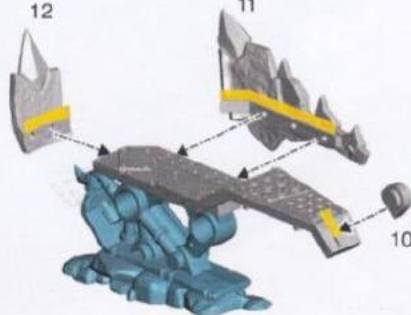
15



9

12

11



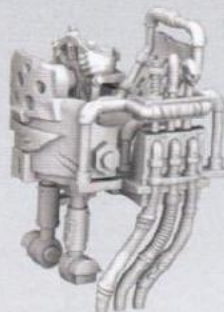
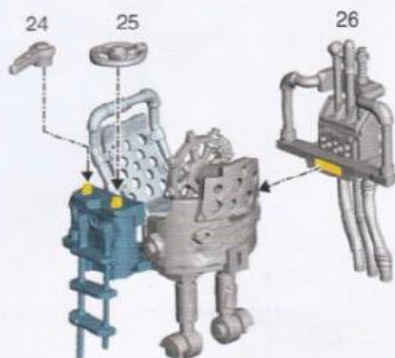
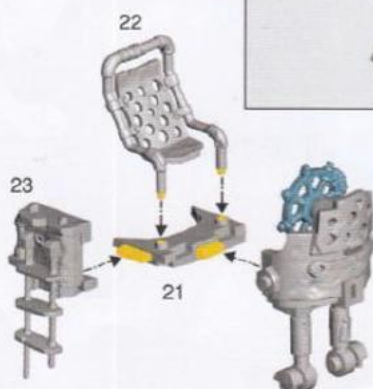
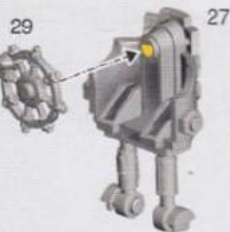
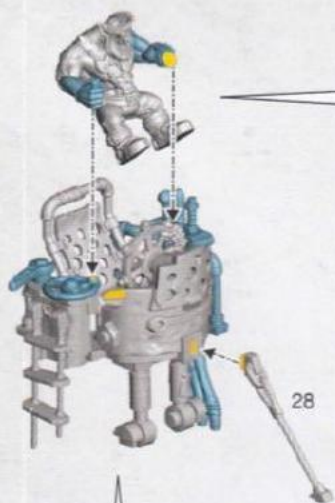
10




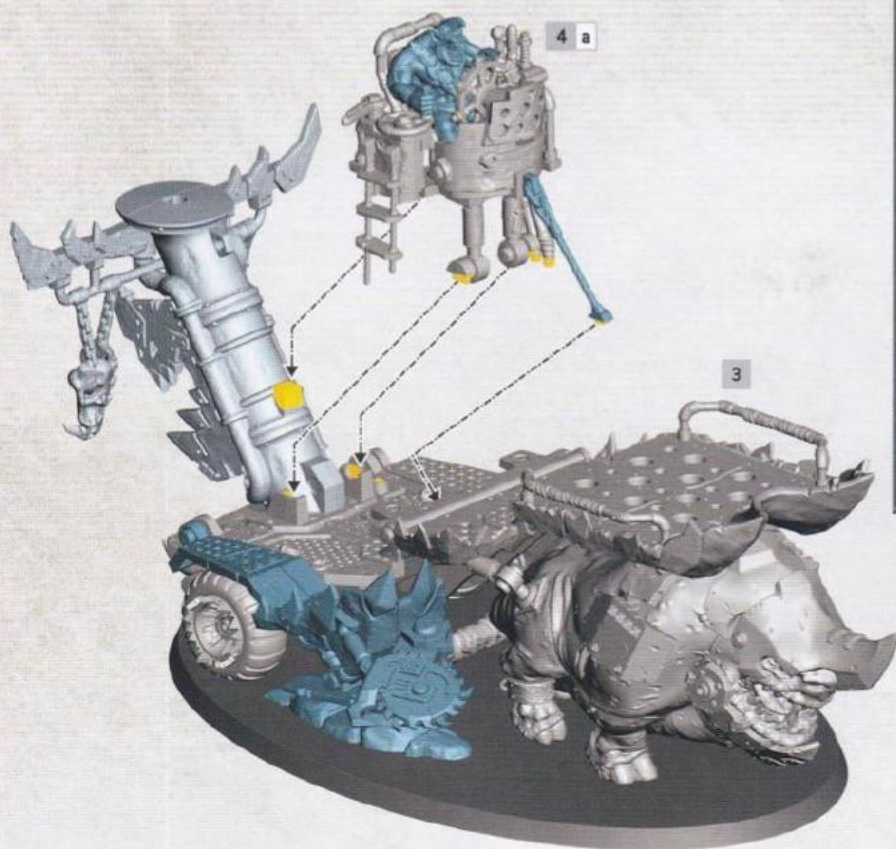
13



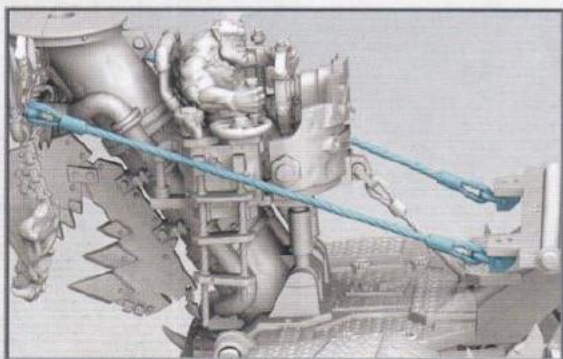
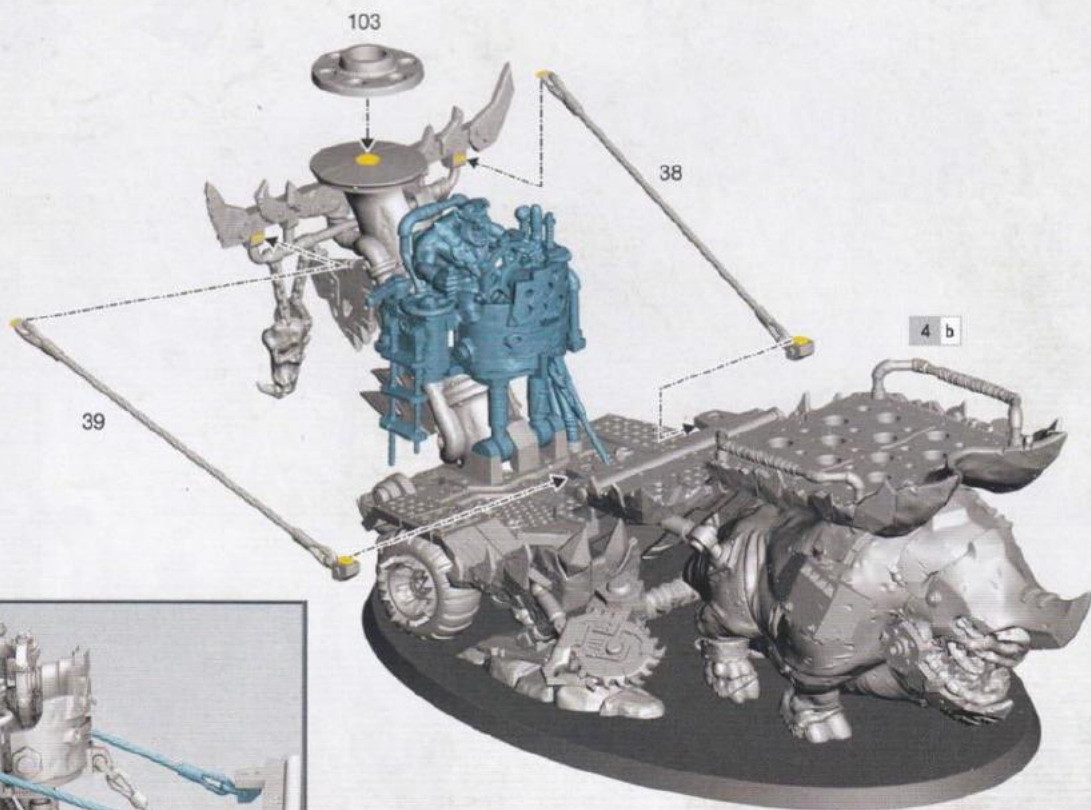
4 a



4 b 

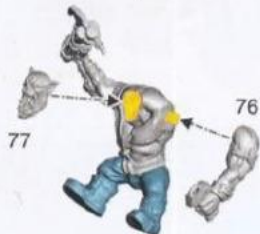
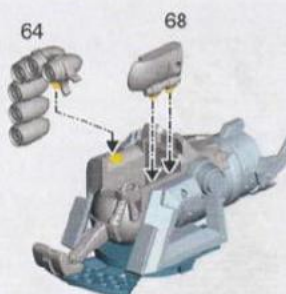
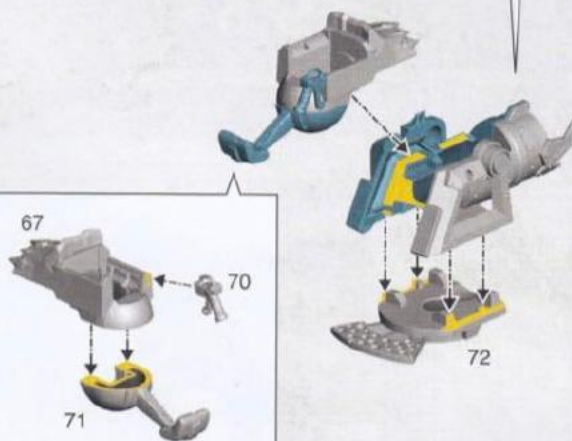
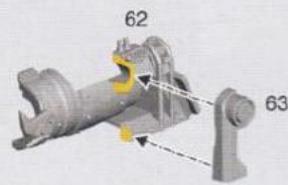
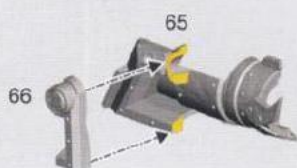


4 c 

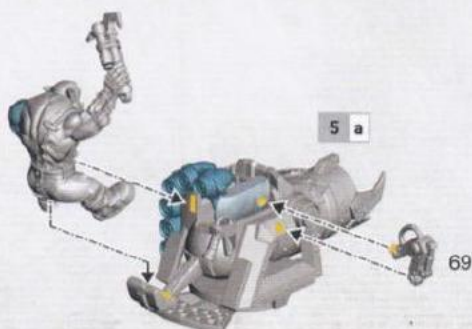




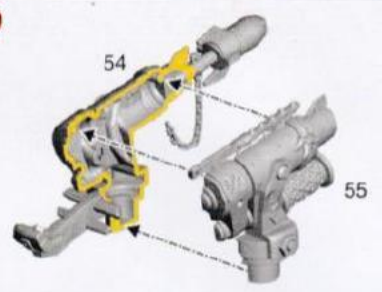
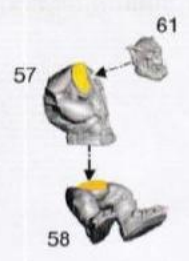
5 a



5 b

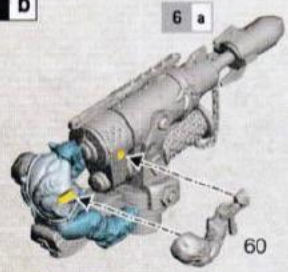


6 a

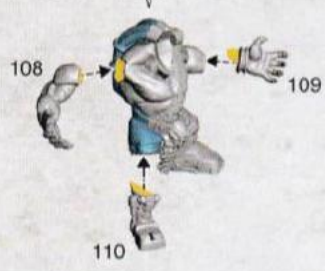
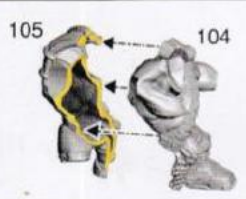


6 b

6 a

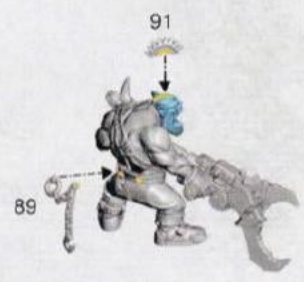
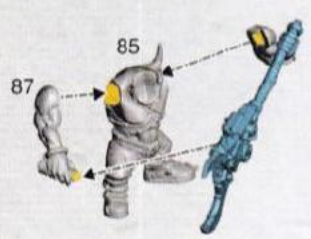


7

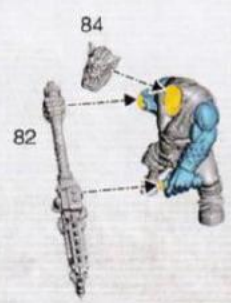


Wurrboy | Zarboy | Beztiambótiko
Wurrgit | Tipo Ztrambo
ウールボウイ | 戦争小子

8 a



8 b





CHOOSE THE VARIANT YOU WANT TO BUILD | CHOISISSEZ LA VARIANTE À ASSEMBLER | ELIGE QUÉ VERSION QUIERES MONTAR | WÄHLE DIE VARIANTE, DIE DU BAUEN MÖCHTEST
SCEGLI LA VARIANTE CHE VUOI ASSEMBLARE | 組み立てバリエーションの選択 | 选择你喜欢的拼装方式

KILL RIG

KARIOL' KITU
PLATAFORKMA
KILLAKUTSCHE
MAKKINA AZZAZZINA
キルリグ
杀戮战车



STEPS | ÉTAPES | PASOS | SCHRITTE | FASI | ステップ | 步骤

9 - 10

HUNTA RIG

KARIOL' KICHASS
CAZAFORKMA
JÄGAKUTSCHE
MAKKINA DA KACCIA
ハンタリグ
狩猎战车



STEPS | ÉTAPES | PASOS | SCHRITTE | FASI | ステップ | 步骤

11

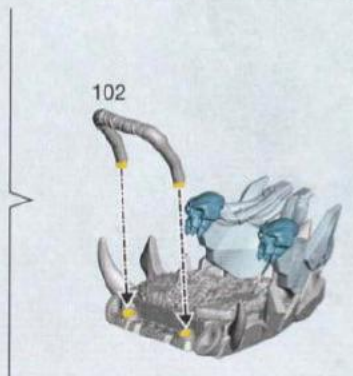
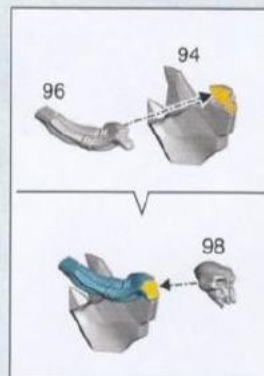
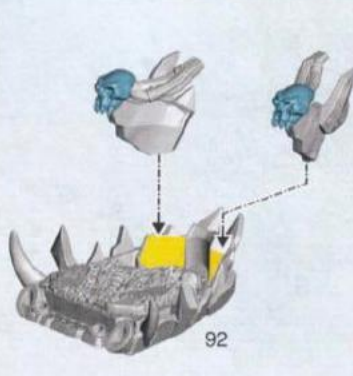
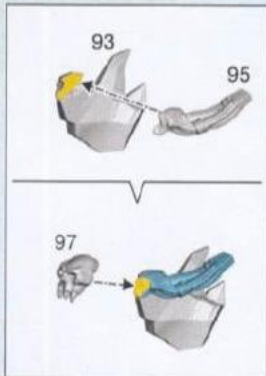


9 - 10

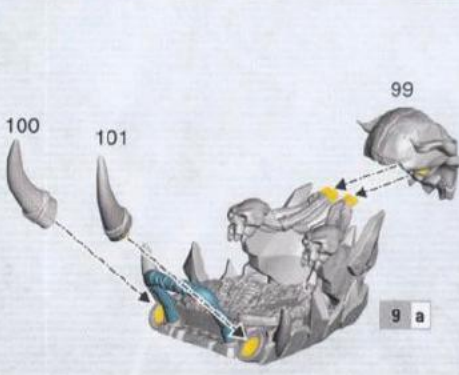
KILL RIG

KARIOL' KITU | PLATAFORKMA | KILLAKUTSCHE | MAKKINA AZZAZZINA | キルリグ | 杀戮战车

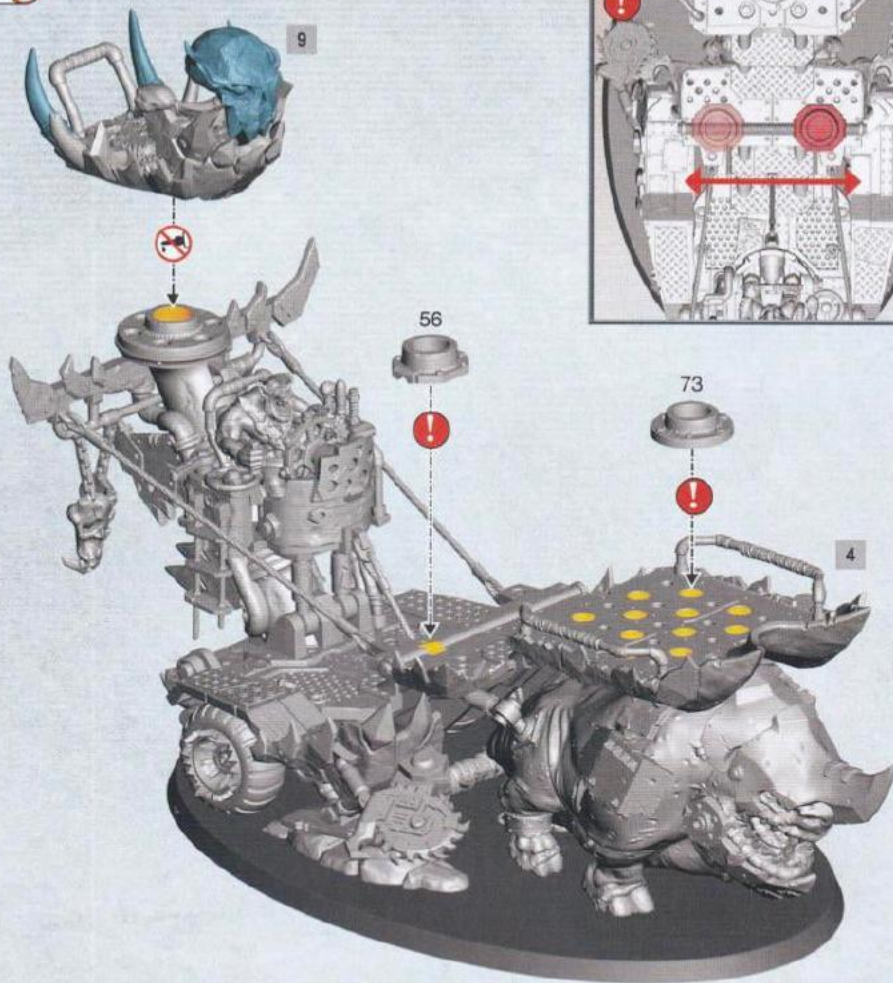
9 a



9 b



10 a

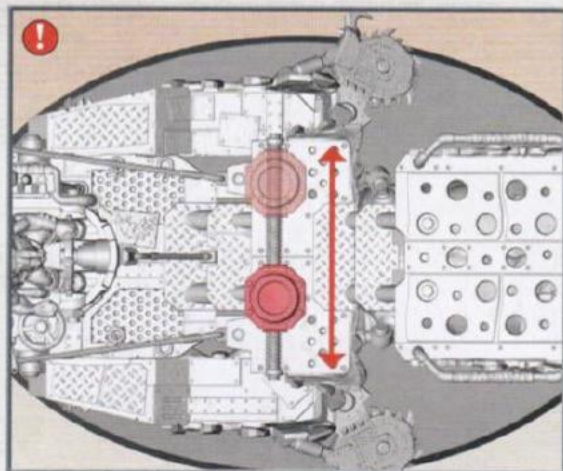
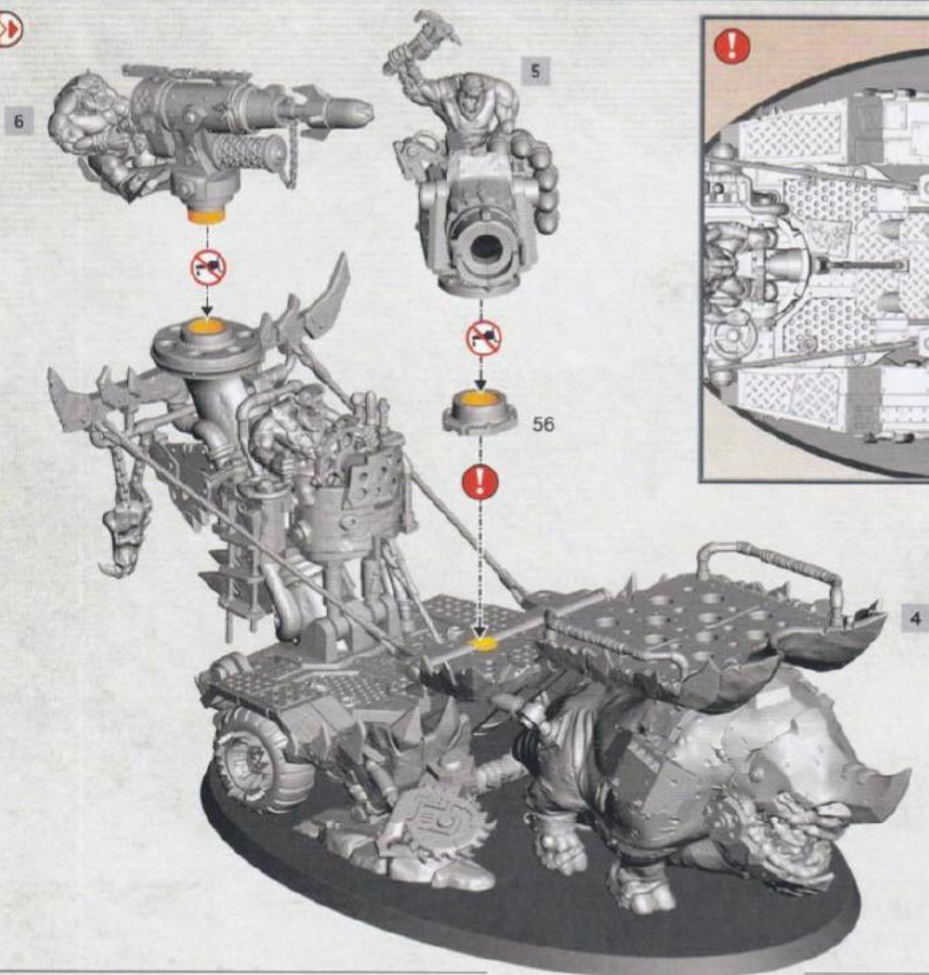


10 b



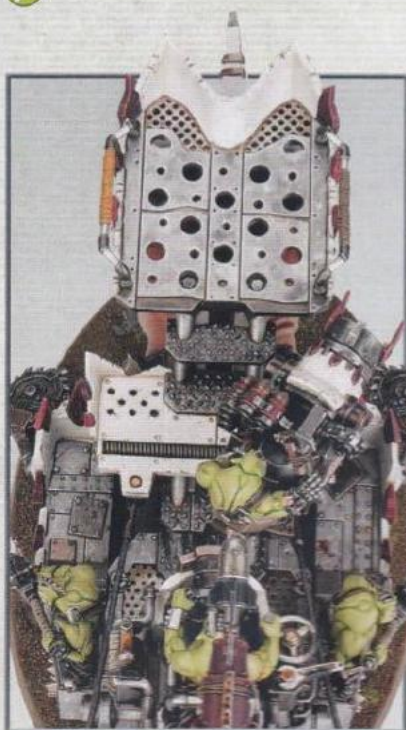


11 a



11 b





ENG The full painting guide can be found on citadelcolour.com/guides

FRE Le guide de peinture complet est disponible sur citadelcolour.com/guides

ESP Puedes encontrar la guía completa de pintura en citadelcolour.com/guides

GER Die vollständige Bemalungsanleitung findest du auf citadelcolour.com/guides

ITA Puoi trovare la guida completa alla pittura su citadelcolour.com/guides

日本文 ペイントの完全版ガイドは citadelcolour.com に掲載されている。

中文 可以在 citadelcolour.com/guides 找到完整涂装指南。

CITADEL
COLOUR

