

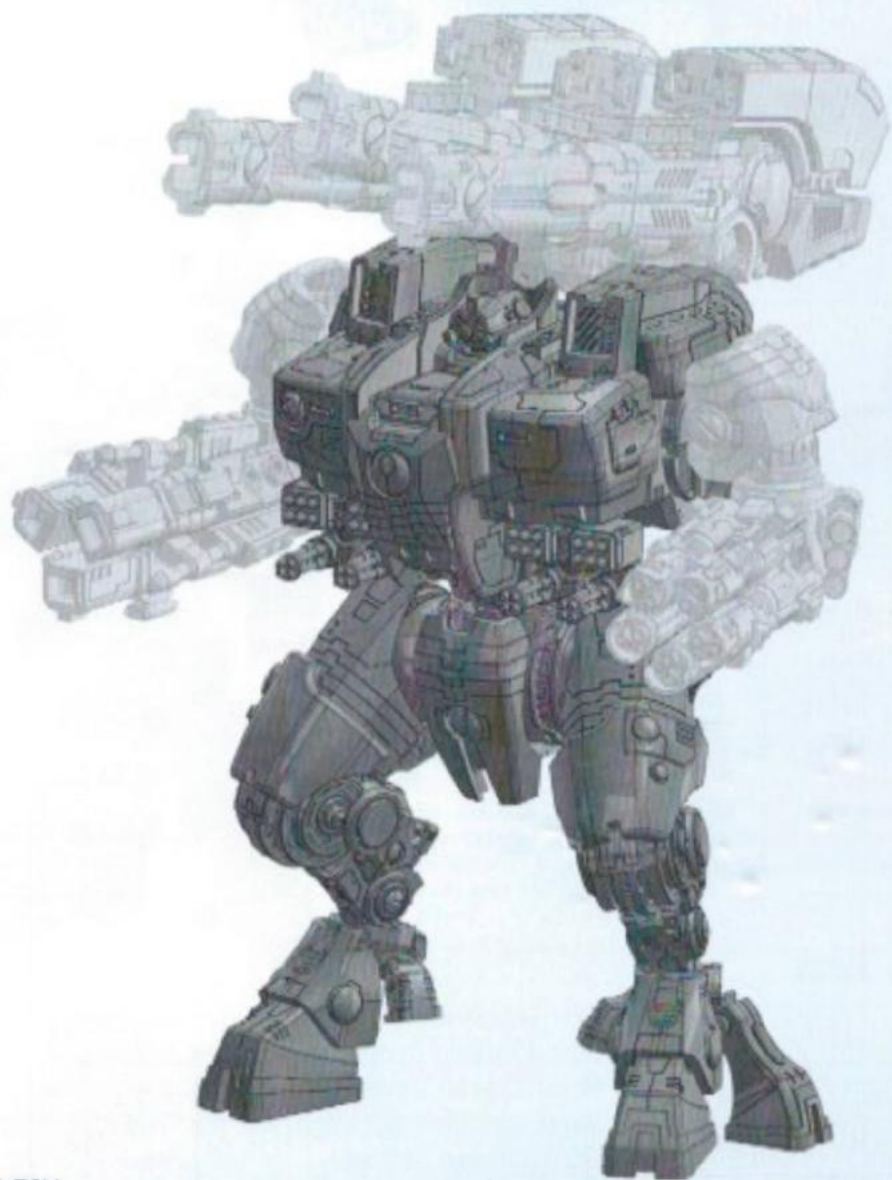


Free Downloads of Build Instructions,
Assembly Booklets & How To Guides

BuildInstructions.com

KX139 TA'UNAR SUPREMECY ARMOUR

The first in a series of new Tau war machines designed to operate in the most testing environments and survive on the most deadly battlefields, the KX139 Ta'unar, named for a Tau hero of ancient myth, matches an Imperial Knight in firepower and durability. Deploying the Tau Battlesuit technology on the unprecedented scale required to create these new 'Supremacy Armour' units is an unmatched achievement of the Ke'ishan Sept which has quickly borne fruit across the Tau Empire.



THIS IS NOT A TOY

Not suitable for children under 15 years of age.

WARNING: Resin dust can be harmful if inhaled. Always wear a dust mask or respirator when sanding or sawing resin parts.

forgeworld.co.uk



993201130020



Components

Before assembly, check that none of the components are missing.




If you need to contact the Forge World Customer Service team regarding this model, you can get in touch via email - forgeworld@gwplc.com - or call: 0115 900 4995 within the UK 011 44 115 900 4995 from the USA and Canada 0011 44 115 900 4995 from Australia 011 44 115 900 4995 from Europe and the rest of the world.

Components List

- | | | |
|---|-----------------------------|------------------------|
| 1. Torso Front | 12. Smart Missile System x2 | 24. Knee x2 |
| 2. Torso Rear | 13. Burst Cannon Turret x2 | 25. Ankle Joint x2 |
| 3. Torso Right | 14. Burst Cannon Right x2 | 26. Outer Toe Pivot x2 |
| 4. Torso Left | 15. Burst Cannon Left x2 | 27. Knee Joint x2 |
| 5. Intake Right | 16. Burst Cannon Front x4 | 28. Foot Socket x2 |
| 6. Intake Left | 17. Waist | 29. Front Toe x2 |
| 7. Head 1 | 18. Hips | 30. Outer Toe x2 |
| 8. Head 2 | 19. Groin Plate | 31. Inner Toe x2 |
| 9. Sensor | 20. Lower Right Leg | 32. Stabiliser Jets x4 |
| 10. Reactor | 21. Lower Left Leg | |
| 11. Support Weapon
Connecting Pin x2 | 22. Upper Right Leg | |
| | 23. Upper Left Leg | |

Assembly Legend

Parts for Assembly 

Note 

Glue Contact Area 

Reverse Angle 

Assembly Options 

Shim to be Removed 

Insert 

Component Highlight 

Preparing the Model for Assembly

Before assembling the model, wash each part thoroughly with an abrasive brush, such as a toothbrush, to remove any model release agent that may still be on the surface of the parts. Then, remove any excess resin such as mould lines, casting gates, vents and shims. For a more detailed guide to working with resin models, go to the Downloads section of the Forge World website.

This kit contains all the pieces required to construct the KX139 Ta'unar Supremecy Armour Body. To glue the resin pieces together, use Citadel Super Glue.

NOTE: We have cast this kit using the most advanced techniques and the best quality resin, but due to the nature of the casting process, your model may contain small air bubbles. These can easily be filled with model filler or super glue. Any slight warpage of thin parts can easily be corrected by immersing the part in hot water for about 1 minute, then bending it back into shape.

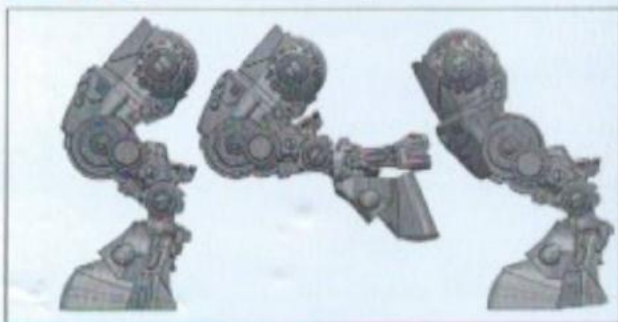


Use clippers to remove any vents and casting gates.



Remove shims as indicated in red on construction diagram 7.

1



The image above highlights the range of motion possible when constructing the legs. It is best to have an idea as to what you want the final pose of the model to be before you start constructing each leg.

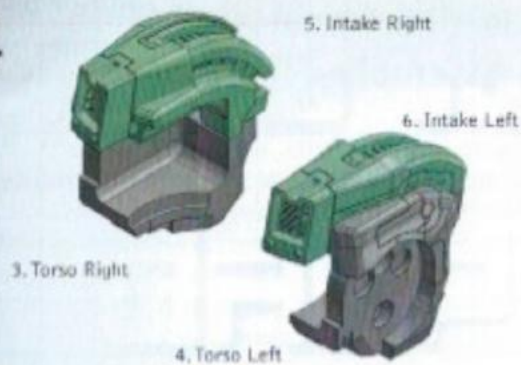
2



3



4



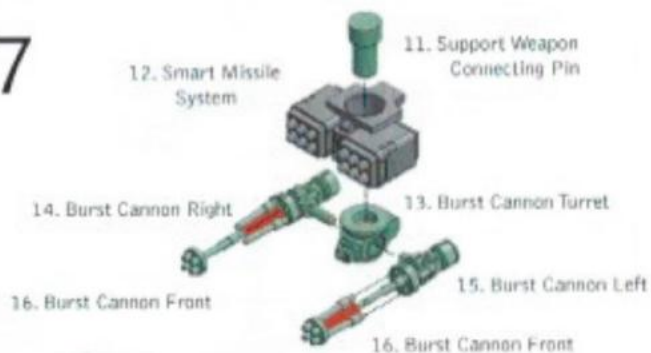
5



6

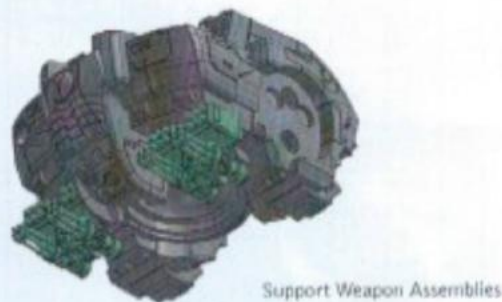


7



Remove any shims from Burst Cannon components.
Repeat step 7 for both Support Weapon Turrets.

8



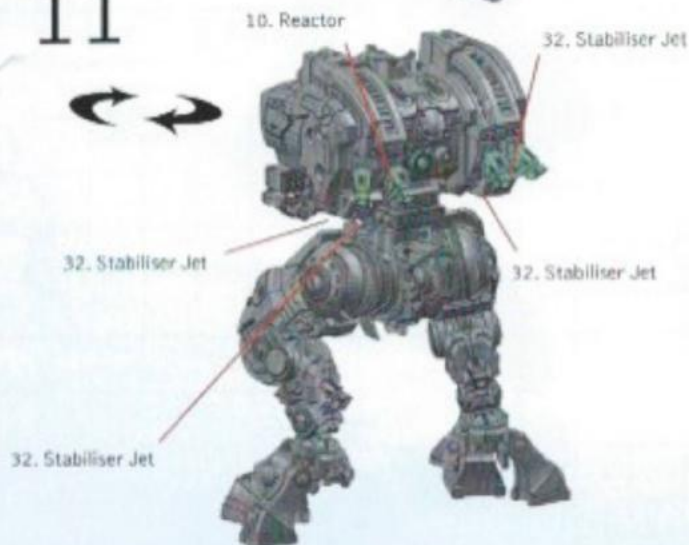
9



10



11



KX139 TA'UNAR SUPREMECY ARMOUR PULSE ORDNANCE MULTI-DRIVER

A recent development of Tau pulse technology, this triple-barrelled weapons battery uses powerful induction fields to propel a variety of heavy munitions with great force and precision. Fired in rapid volleys, this mix of high explosive and kinetic projectiles can either be used to fire concentrated bombardments to saturate a single target or in arcing trajectories to shower a wider area to equally devastating effect.



THIS IS NOT A TOY

Not suitable for children under 15 years of age.

WARNING: Resin dust can be harmful if inhaled. Always wear a dust mask or respirator when sanding or sawing resin parts.

forgeworld.co.uk

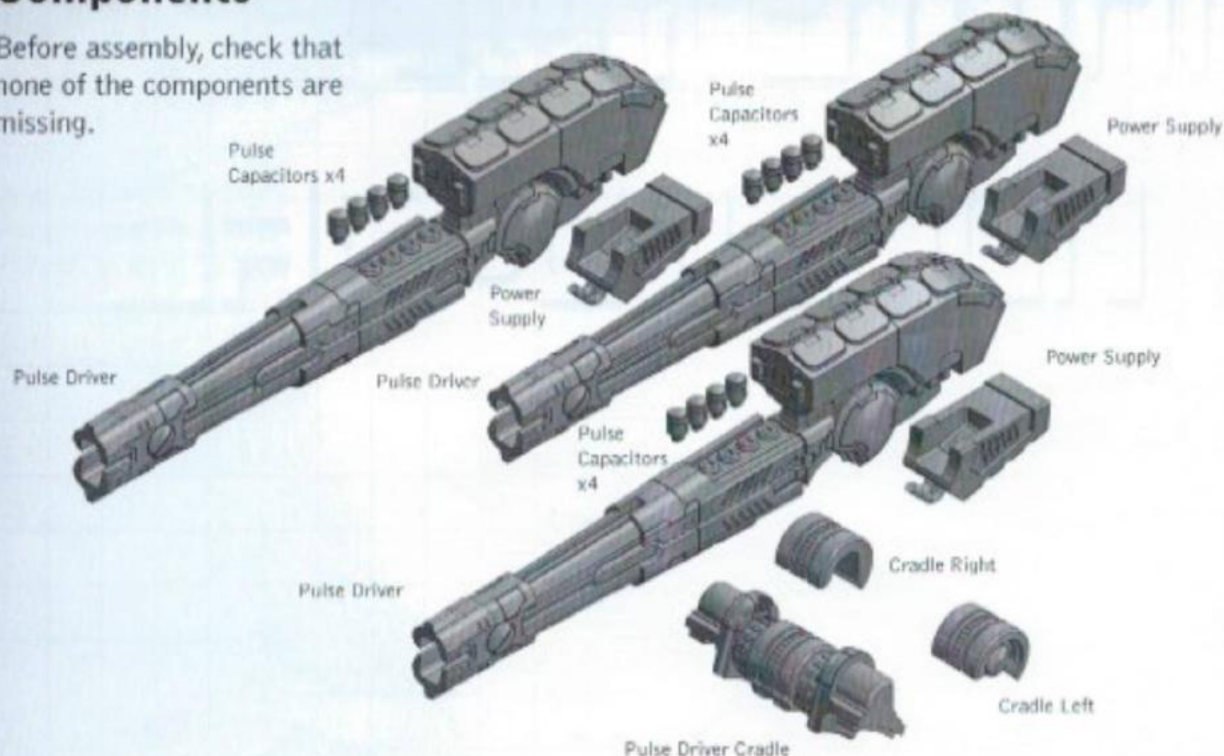


993201130037



Components

Before assembly, check that none of the components are missing.



Assembly Legend

Parts for Assembly



Note



Insert



Assembly Options



Glue Contact Area



Preparing the Model for Assembly

Before assembling the model, wash each part thoroughly with an abrasive brush, such as a toothbrush, to remove any model release agent that may still be on the surface of the parts. Then, remove any excess resin such as mould lines, casting gates, vents and shims. For a more detailed guide to working with resin models, go to the Downloads section of the Forge World website.

This kit contains all the pieces required to construct a Pulse Ordnance Multi-driver.
To glue the resin pieces together, use Citadel Super Glue.

NOTE: We have cast this kit using advanced techniques and high quality resin, but due to the nature of the casting process, your model may contain small air bubbles. These can easily be filled with model filler or super glue. Any slight warpage of thin parts can easily be corrected by immersing the part in hot tap water for about 1 minute, then carefully bending it back into shape.

If you need to contact the Forge World Customer Service team regarding this model, you can get in touch via email - forgeworld@gwplc.com - or call:

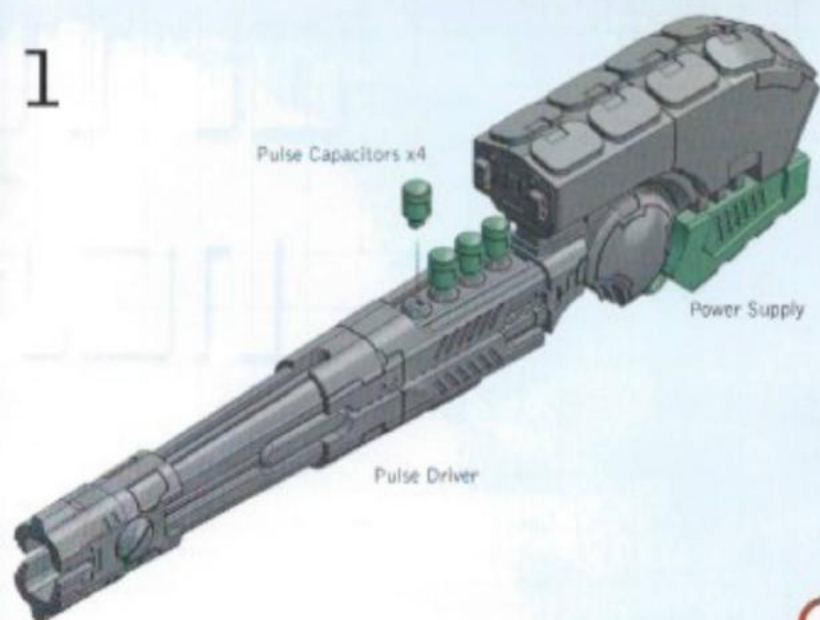
0115 900 4995 within the UK

011 44 115 900 4995 from the USA and Canada

0011 44 115 900 4995 from Australia

011 44 115 900 4995 from Europe and the rest of the world.

1

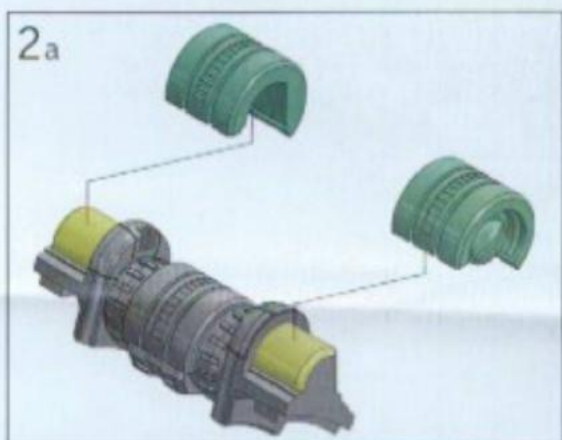


Use a pair of clippers to remove any vents and casting gates. The Working with Resin guide on the Forge World website goes into more detail about cleaning up resin components.



Complete step 1 for all three of the Pulse Drivers.

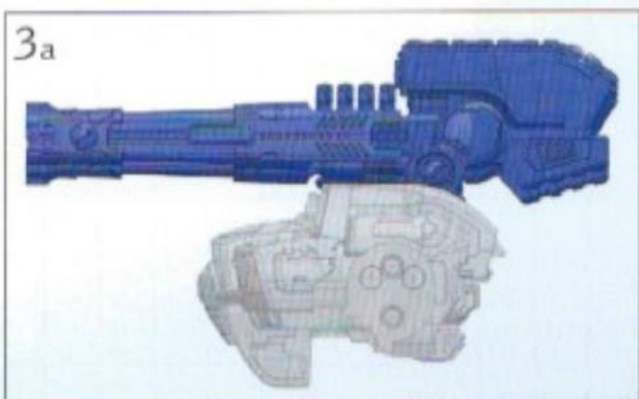
2



3



Before mounting the Cradle and Pulse Drivers, decide how you want them to be mounted onto the KX139 Ta'unar Supremacy Armour.



Pulse Ordnance Multi-drivers set for direct fire mode.

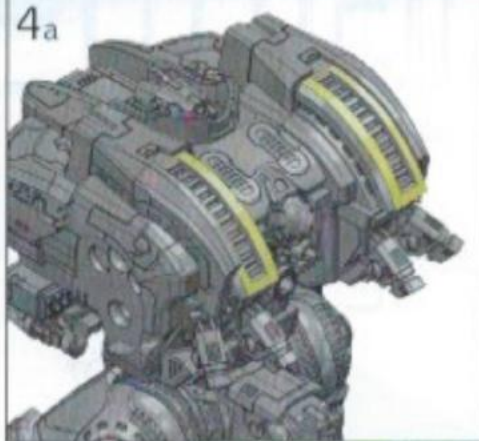


Pulse Ordnance Multi-drivers set for indirect fire mode.

4



4a



The cradle contacts the areas shown above. Only apply glue to the part of the highlighted section that you want to pose the cradle on.

5



5a



The Pulse Ordnance Drivers are mounted onto the cradle using the contact points shown above. With the cradle already in position on the KX139 Ta'unar Supremacy Armour, it is easier to judge where you would like each Pulse Driver to go.

KX139 TA'UNAR SUPREMECY ARMOUR TRI-AXIS ION CANNON

A rapid-firing, multi-chambered particle weapon whose firepower is unmatched for its size in the Tau arsenal, the Tri-axis Ion Cannon is designed to reap through enemy formations, adjusting its power levels and rate of fire to deal with light vehicles or heavy armour with precisely controlled lethality.



THIS IS NOT A TOY

Not suitable for children under 15 years of age.

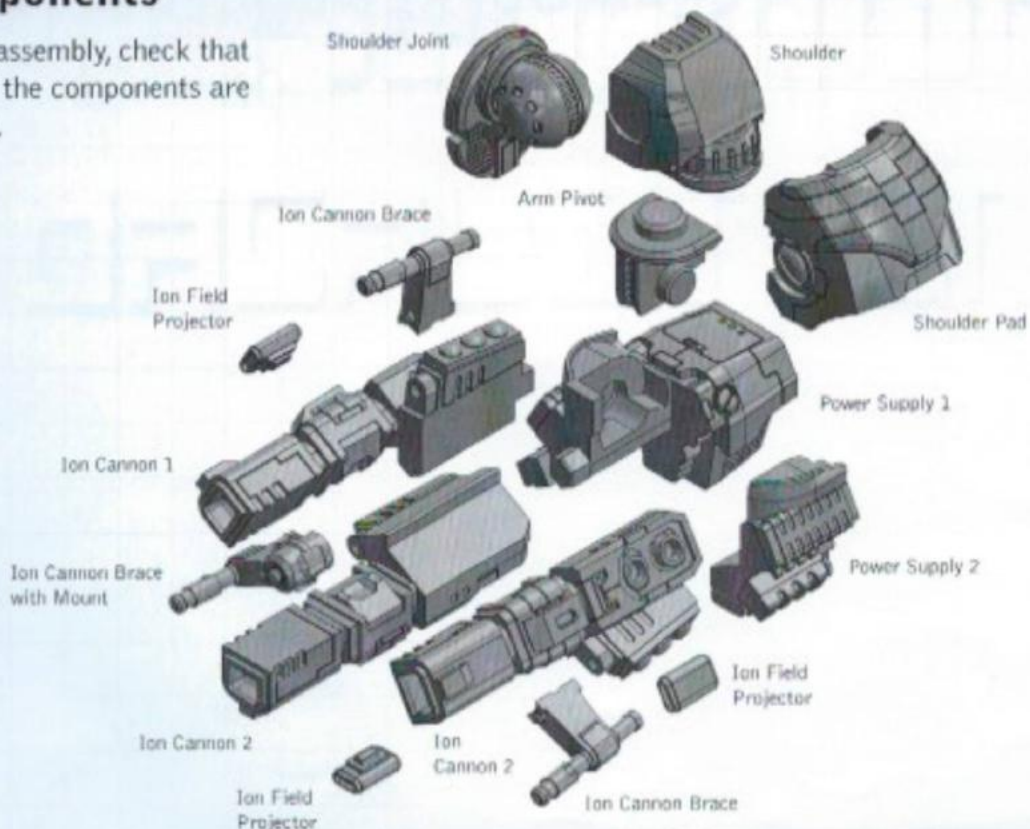
WARNING: Resin dust can be harmful if inhaled. Always wear a dust mask or respirator when sanding or sawing resin parts.

forgeworld.co.uk



Components

Before assembly, check that none of the components are missing.



Assembly Legend

Parts for Assembly



Note



Insert



Reverse Angle



Assembly Options



Glue Contact Area



Preparing the Model for Assembly

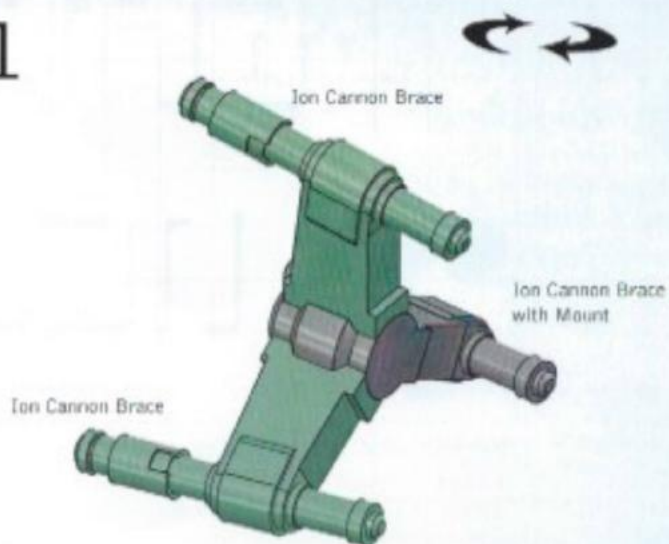
Before assembling the model, wash each part thoroughly with an abrasive brush, such as a toothbrush, to remove any model release agent that may still be on the surface of the parts. Then, remove any excess resin such as mould lines, casting gates, vents and shims. For a more detailed guide to working with resin models, go to the Downloads section of the Forge World website.

This kit contains all the pieces required to construct a Tri-axis Ion Cannon. To glue the resin pieces together, use Citadel Super Glue.

NOTE: We have cast this kit using advanced techniques and high quality resin, but due to the nature of the casting process, your model may contain small air bubbles. These can easily be filled with model filler or super glue. Any slight warpage of thin parts can easily be corrected by immersing the part in hot tap water for about 1 minute, then carefully bending it back into shape.

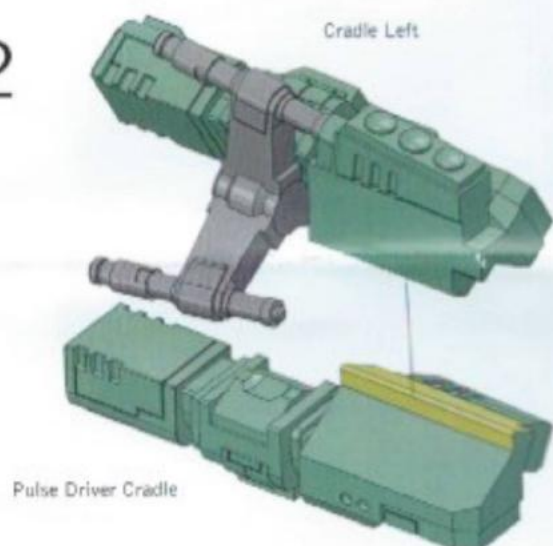
If you need to contact the Forge World Customer Service team regarding this model, you can get in touch via email - forgeworld@gwplc.com - or call:
0115 900 4995 within the UK
011 44 115 900 4995 from the USA and Canada
0011 44 115 900 4995 from Australia
011 44 115 900 4995 from Europe and the rest of the world.

1

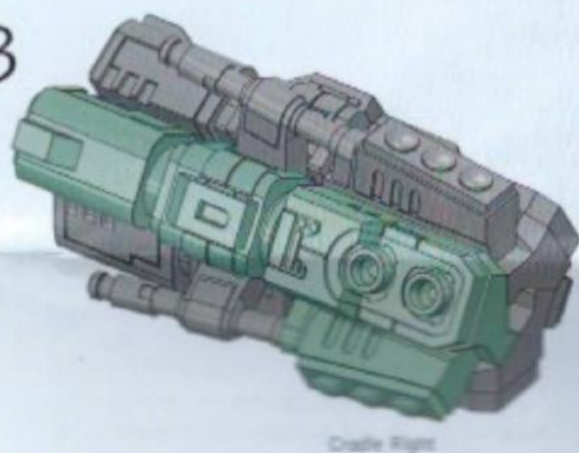


1a
Use a pair of clippers to remove any vents and casting gates. The Working with Resin guide on the Forge World website goes into more detail about cleaning up resin components.

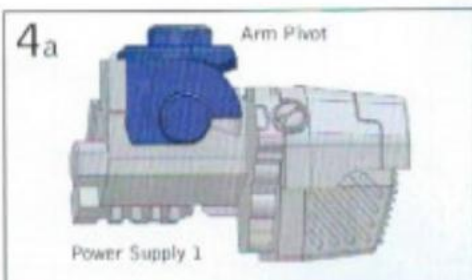
2



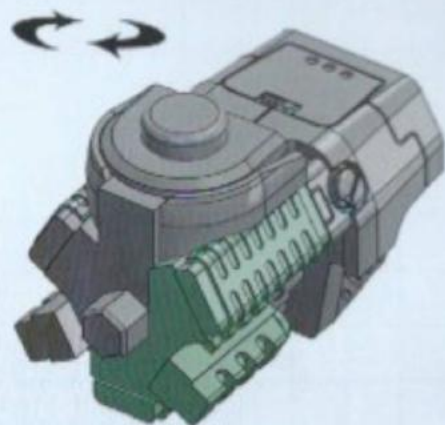
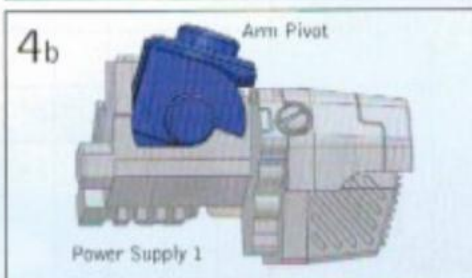
3



4



5

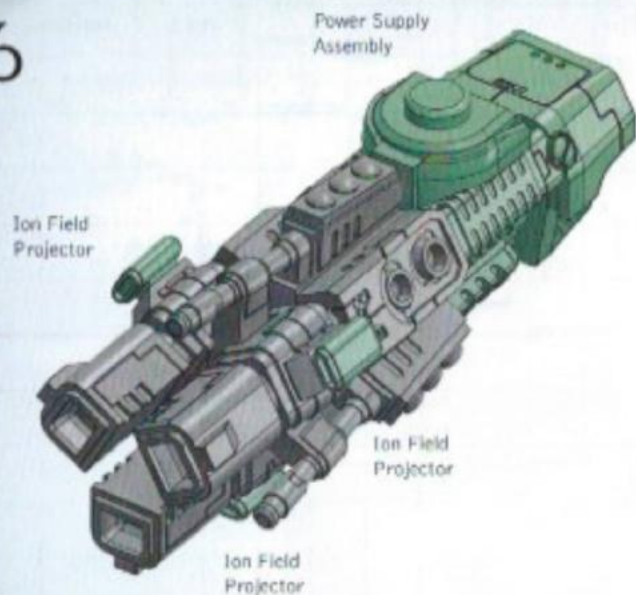


Power Supply 2

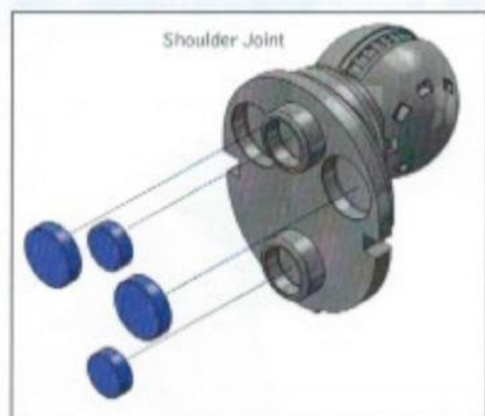


The Arm Pivot can be angled depending on how you want the arm positioned.

6



7

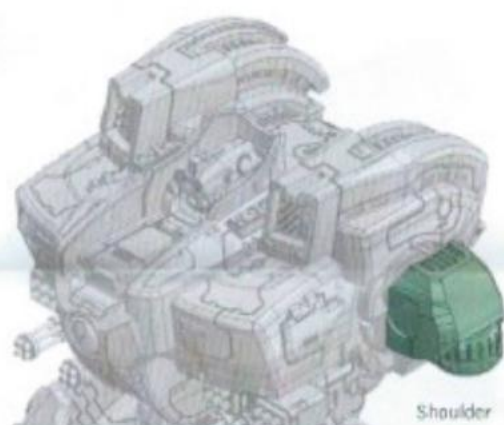


Recessed areas in the Shoulder Joint can be used to mount magnets (6x2mm and 8x2mm in size), allowing each arm to be removed. Magnets are not supplied with this model kit.

8



9



The Tri-axis Ion Cannon can be mounted to either the left or right side of the KX139 Ta'unar Supremecy Armour.

10

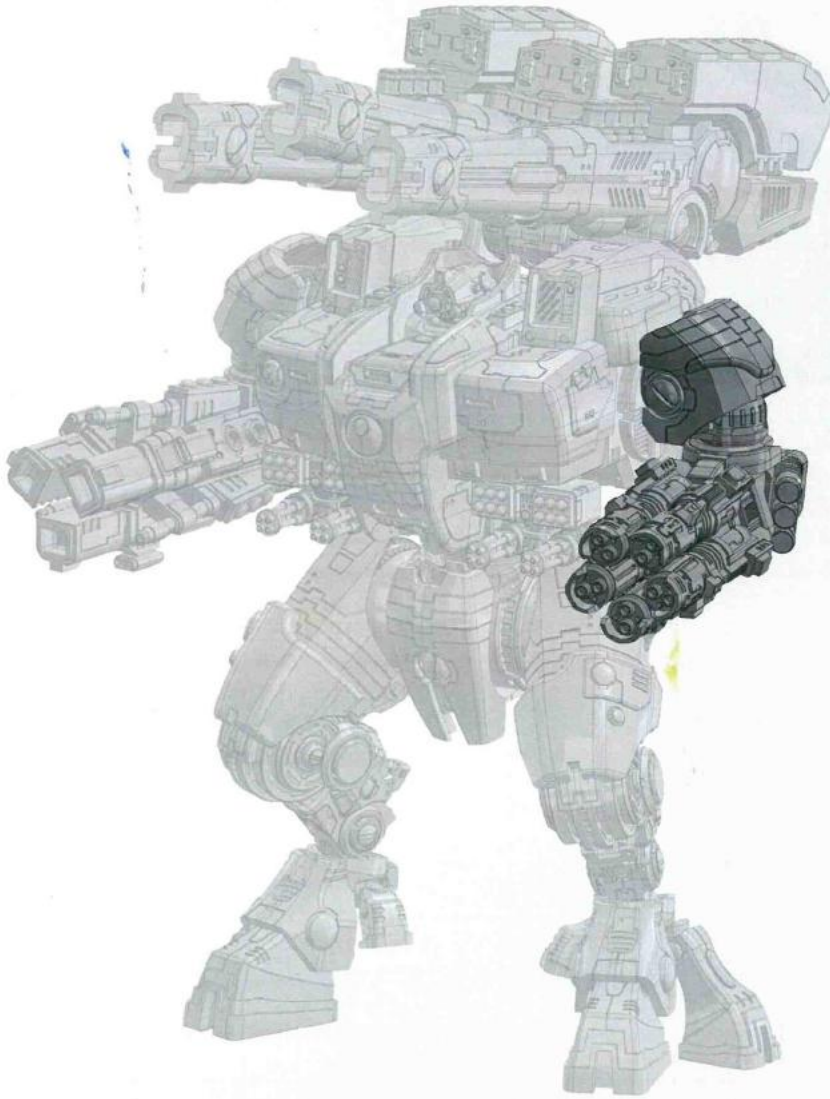


11



KX139 TA'UNAR SUPREMACY ARMOUR FUSION ERADICATOR

Designed as a radical solution to the limitations of current Tau fusion weapons technology, the Fusion Eradicator is a composite weapon which creates a blast of energy so potent that solid matter caught in its path is torn apart at a molecular level by brute thermal force, and no physical material yet known to the Tau can survive its destructive power. The cost in materials and expertise to create a single Fusion Eradicator however is immense, and the natural endurance of each is limited often to a single battle, meaning the weapon is employed only by the most elite units and in the direst of conflicts.



THIS IS NOT A TOY

Not suitable for children under 15 years of age.

WARNING: Resin dust can be harmful if inhaled. Always wear a dust mask or respirator when sanding or sawing resin parts.

forgeworld.co.uk

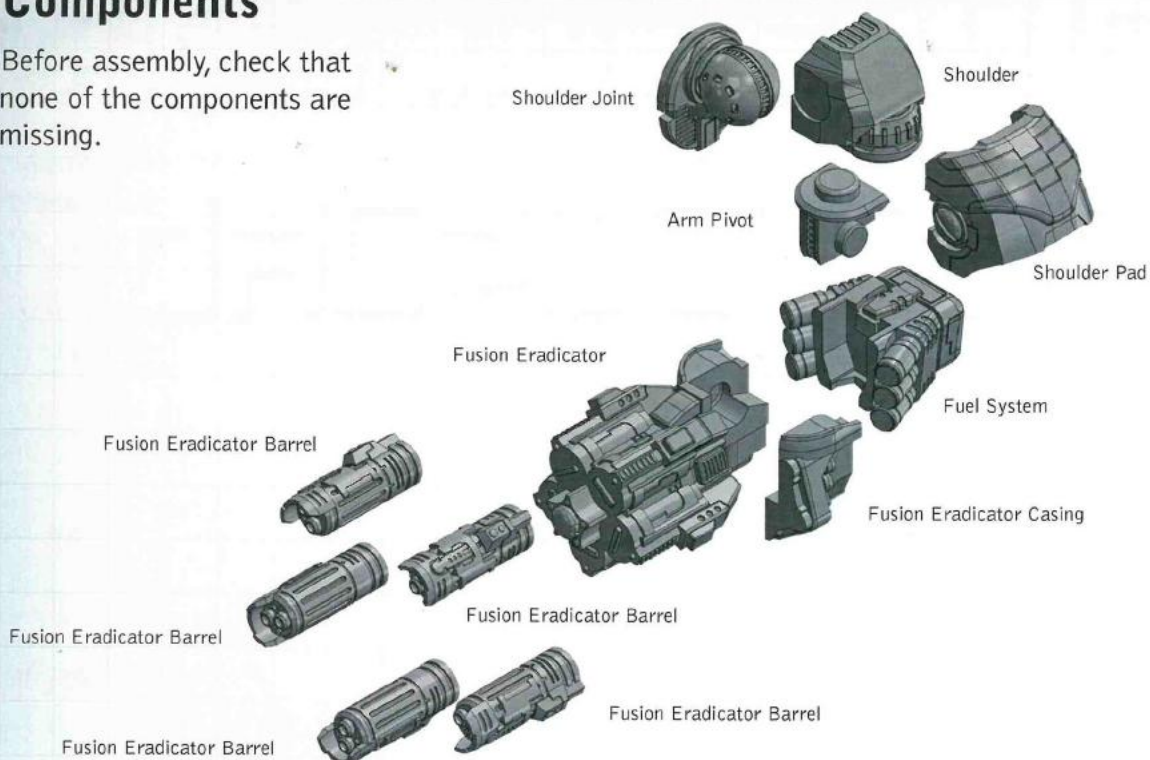


993201130044



Components

Before assembly, check that none of the components are missing.



Assembly Legend

Parts for Assembly



Note



Insert



Reverse Angle



Assembly Options



Glue Contact Area



Component Highlight



Preparing the Model for Assembly

Before assembling the model, wash each part thoroughly with an abrasive brush, such as a toothbrush, to remove any model release agent that may still be on the surface of the parts. Then, remove any excess resin such as mould lines, casting gates, vents and shims. For a more detailed guide to working with resin models, go to the Downloads section of the Forge World website.

This kit contains all the pieces required to construct a KX139 Ta'unar Supremacy Armour Fusion Eradicator. To glue the resin pieces together, use Citadel Super Glue.

NOTE: We have cast this kit using advanced techniques and high quality resin, but due to the nature of the casting process, your model may contain small air bubbles. These can easily be filled with model filler or super glue. Any slight warpage of thin parts can easily be corrected by immersing the part in hot tap water for about 1 minute, then carefully bending it back into shape.

If you need to contact the Forge World Customer Service team regarding this model, you can get in touch via email - forgeworld@gwplc.com - or call:

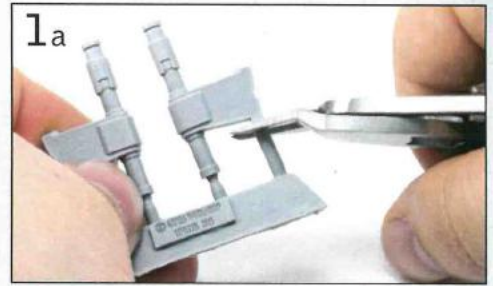
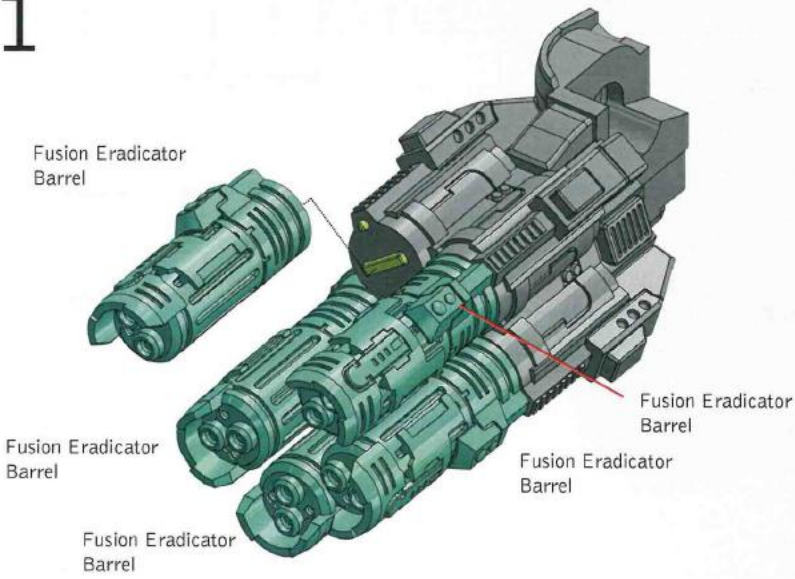
0115 900 4995 within the UK

011 44 115 900 4995 from the USA and Canada

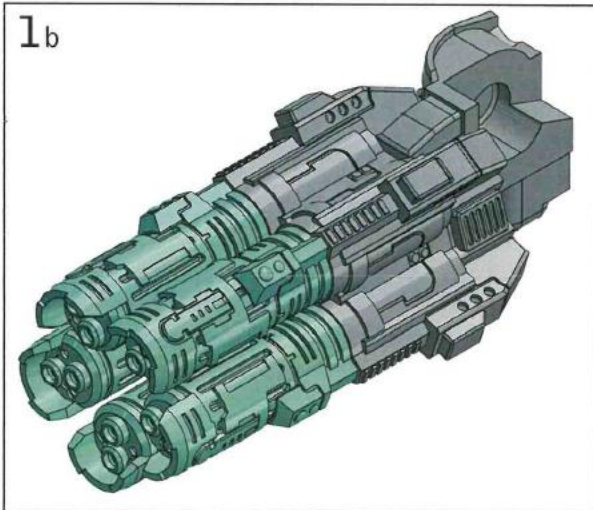
0011 44 115 900 4995 from Australia

011 44 115 900 4995 from Europe and the rest of the world.

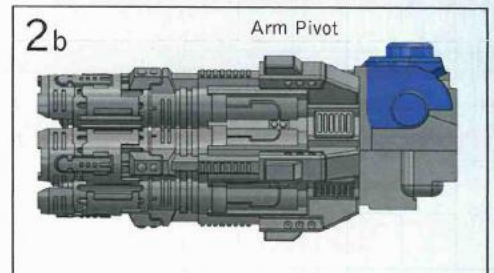
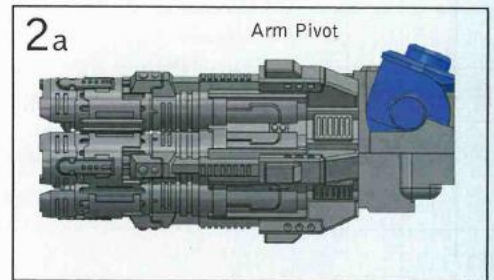
1



Use a pair of clippers to remove any vents and casting gates. The Working with Resin guide on the Forge World website goes into more detail about cleaning up resin components.

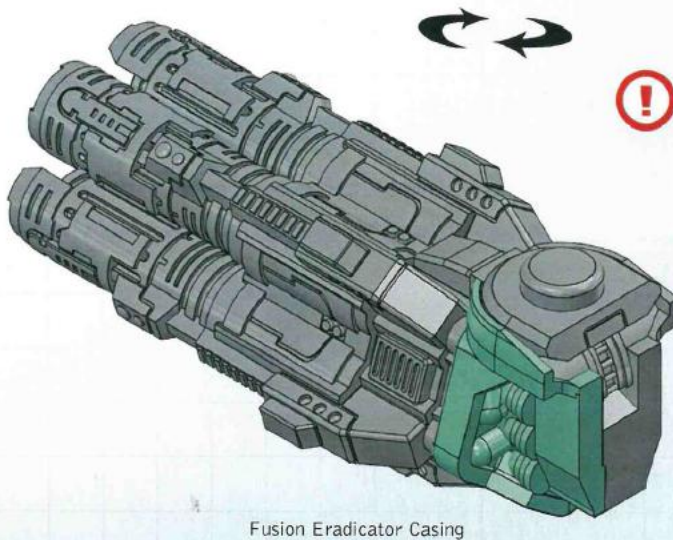


2



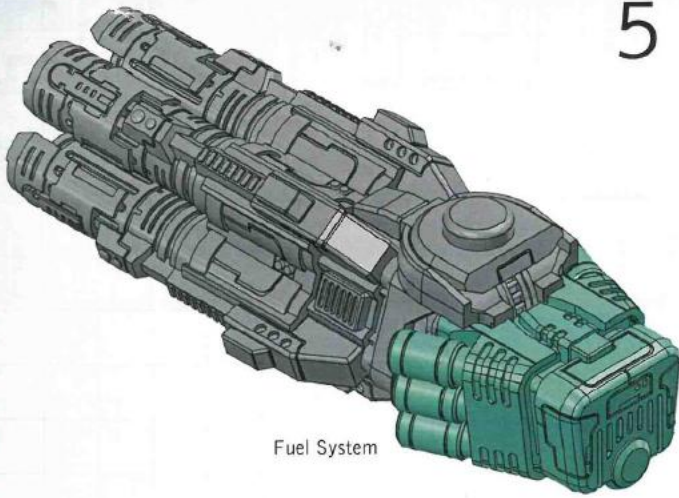
! The Arm Pivot can be angled depending on how you want the arm to be positioned.

3



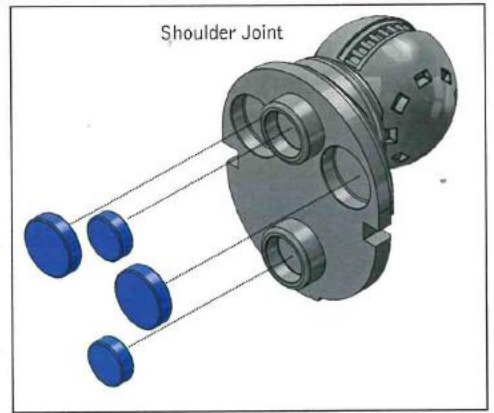
! Once the Arm Pivot is secured in position, attach the Fusion Eradicator Casing over it as shown in Diagram 3.

4



Fuel System

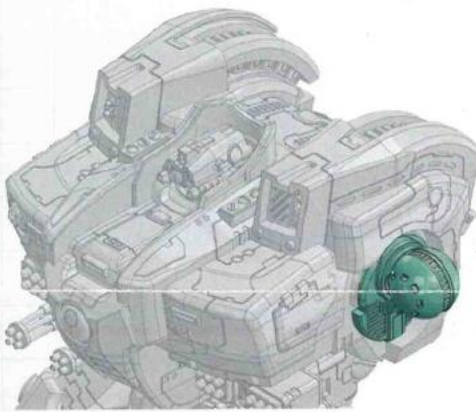
5



Shoulder Joint

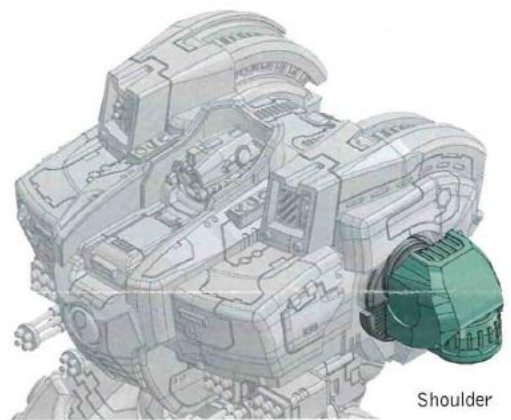
Recessed areas in the Shoulder Joint can be used to mount magnets (6x2mm and 8x2mm in size), allowing each arm to be removed. Magnets are not supplied with this model kit.

6



Shoulder Joint

7

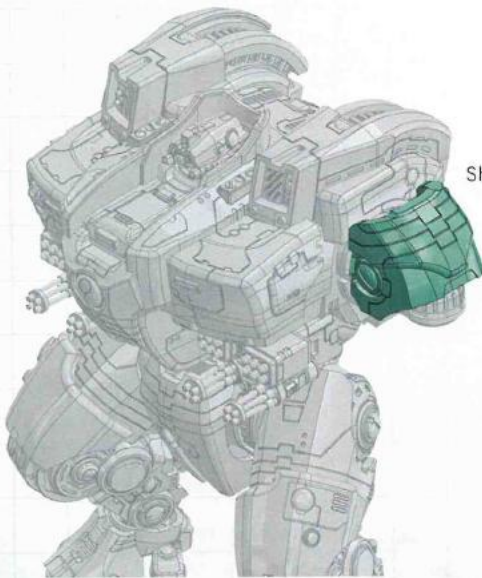


Shoulder



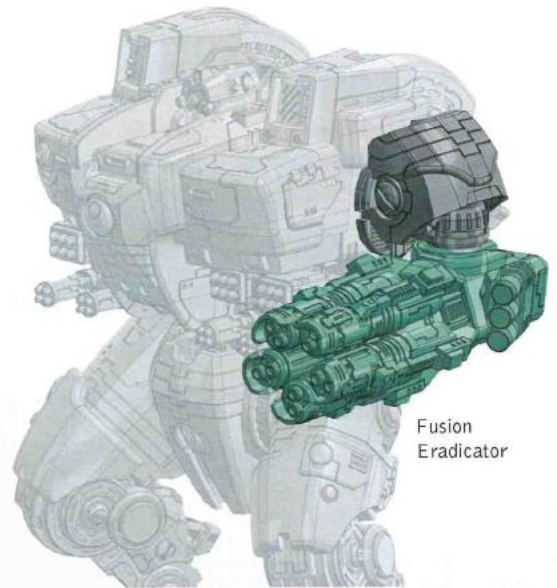
The Fusion Eradicator can be mounted to either the left or right side of the KX139 Ta'unar Supremacy Armour.

8



Shoulder Pad

9



Fusion Eradicator