



Free Downloads of Build Instructions,
Assembly Booklets & How To Guides

BuildInstructions.com

IMPERIALIS MILITIA CARNODON TANK

The Carnodon is a versatile medium battle tank which acted as the lynchpin for many of the storied successes of the Imperial Army during the Great Crusade. As a premier mobile fire platform, it was regularly adapted to combat a wide variety of foes and respond to any number of battlefield conditions. At Gamma-Incunablar, a squadron of the 43rd Veradan's Carnodons, fitted with las weaponry, brought down the first of the great Basemekanic beasts which had subjugated that world, their concentrated firepower surpassing even the Predator tanks of the IIP^d Legion to punch through the vast creature's thick metallic hide. On Hektun, the 3rd Saturnyne Rams earned their reputation as the 'Incinerators' of the Solar Auxilia when their Carnodons, fitted entirely with volkite weaponry, were used to strategically ignite the hydrogen-rich vents of the Phenaem's tunnel structures, eradicating the foul xenos within.

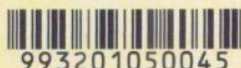


THIS IS NOT A TOY

Not suitable for children under 15 years of age.

WARNING: Resin dust can be harmful if inhaled. Always wear a dust mask or respirator when sanding or sawing resin parts.

www.forgeworld.co.uk

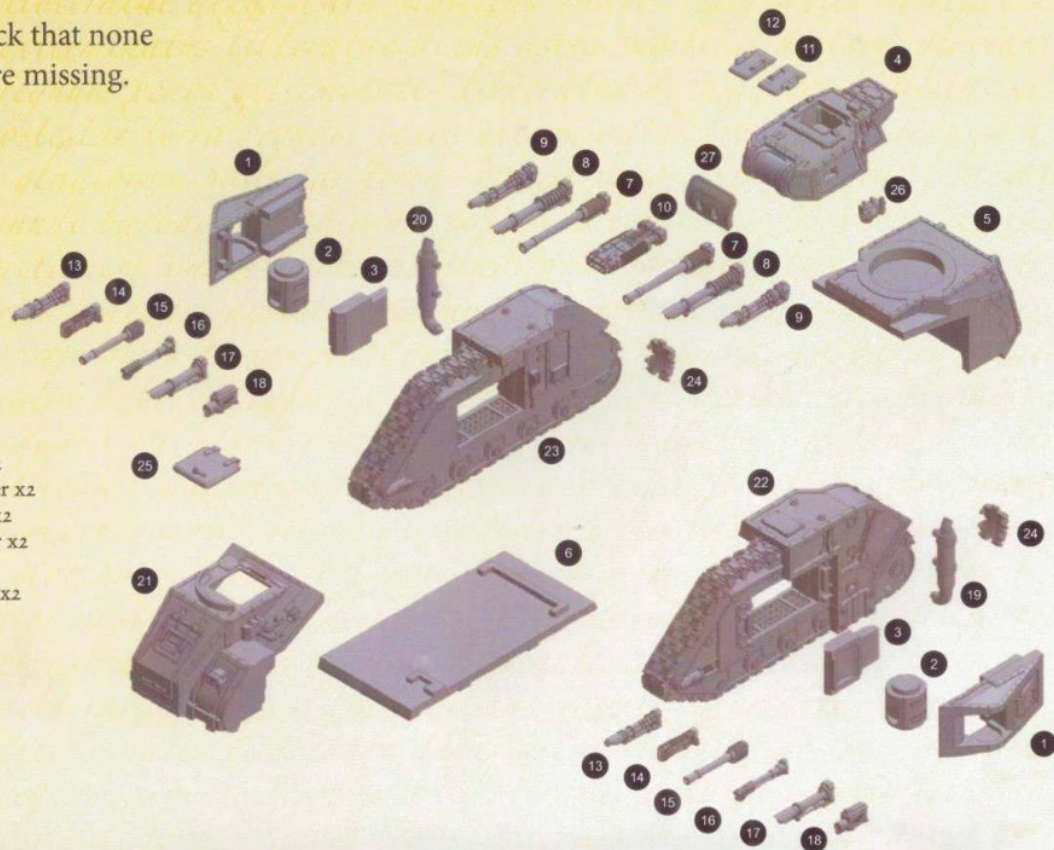


993201050045

Components

Before assembly, check that none of the components are missing.

1. Sponson x2
2. Sponson Turret x2
3. Sponson Rear x2
4. Turret
5. Hull Rear
6. Hull Floor
7. Turret Autocannon x2
8. Turret Lascannon x2
9. Turret Multi-laser x2
10. Volkite Culverin
11. Left Turret Hatch
12. Right Turret Hatch
13. Sponson Multi-laser x2
14. Sponson Volkite Caliver x2
15. Sponson Autocannon x2
16. Sponson Heavy Flamer x2
17. Sponson Lascannon x2
18. Sponson Heavy Bolter x2
19. Left Exhaust
20. Right Exhaust
21. Front Hull
22. Left Track Unit
23. Right Track Unit
24. Track Links x2
25. Crew Hatch
26. Spotlight
27. Mantlet



Assembly Legend

Parts for Assembly



Glue Contact Area



Optional Assembly



Shim For Removal



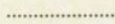
Note



Do Not Glue



Insert



Preparing the Model for Assembly

Before assembling the model, wash each part thoroughly with an abrasive brush, such as a toothbrush, to remove any model release agent that may still be on the surface of the parts. Then, remove any excess resin such as mould lines, casting gates, vents and shims. For a more detailed guide to working with resin models, go to the Downloads section of the Forge World website.

This kit contains all of the pieces required to construct a Carnodon Tank. To glue the resin pieces together, use Citadel Super Glue.

NOTE: We have cast this kit using advanced techniques and the best quality resin, but due to the nature of the casting process, your model may contain small air bubbles. These can be filled with model filler or super glue. Any slight warpage of thin parts can easily be corrected by immersing the part in hot tap water for about 1 minute, then carefully bending it back into shape.

If you need to contact the Forge World Customer Service team regarding this model, you can get in touch via email - forgeworld@gwplc.com - or call:

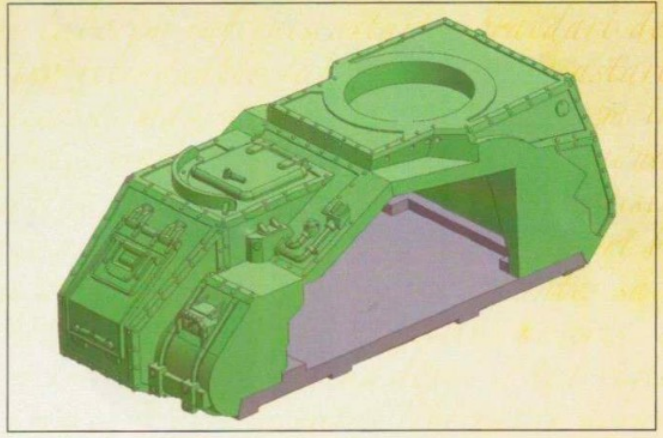
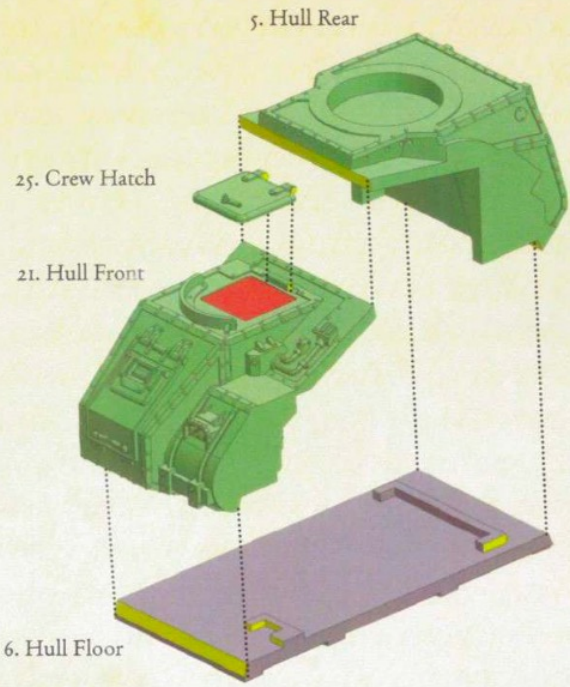
0115 900 4995 within the UK

011 44 115 900 4995 from the USA and Canada

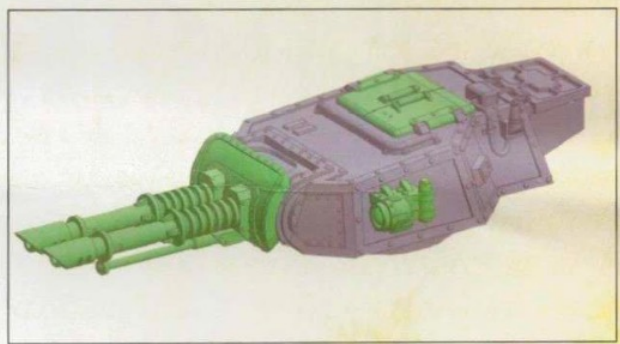
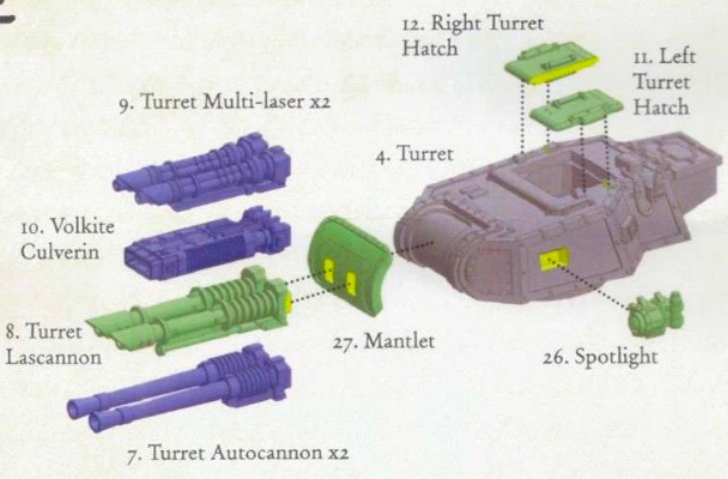
0011 44 115 900 4995 from Australia

00 44 115 900 4995 from Europe and the rest of the world.

I

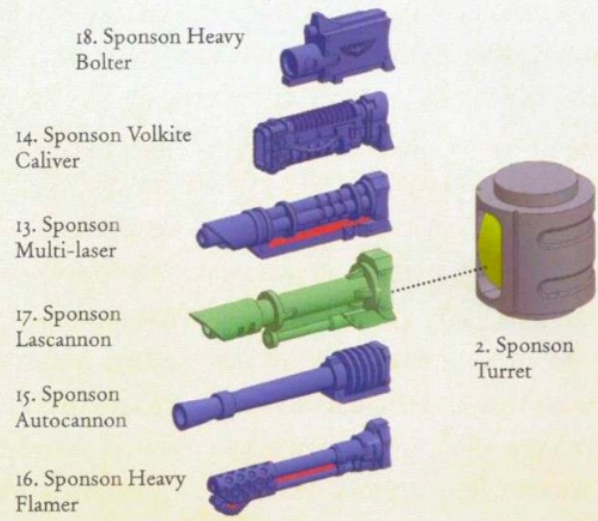


2

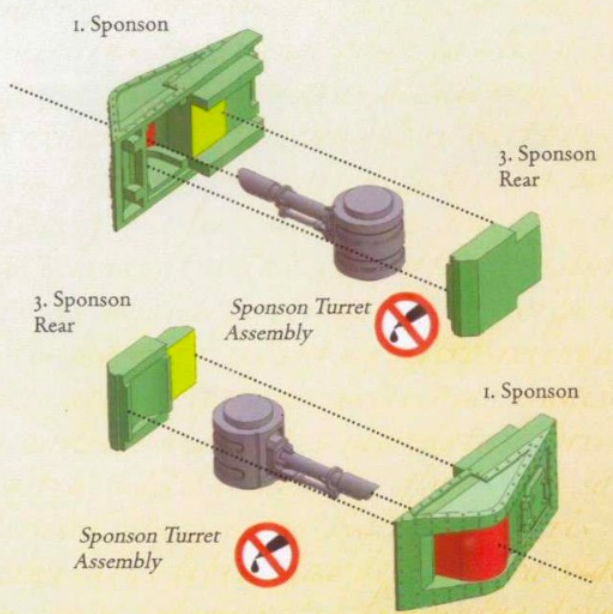


There are a variety of different weapon options available for the Carnodon Tank, both for the Turret and the Sponsons.

3



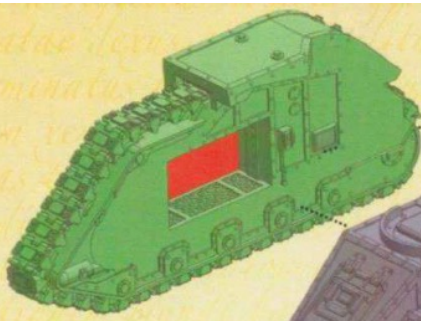
4



Repeat for both Sponson Turrets.

5

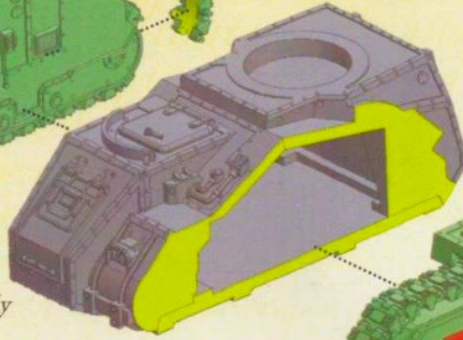
23. Right Track Unit



24. Track Links



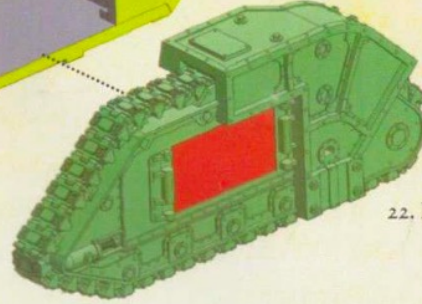
Hull Assembly



24. Track Links

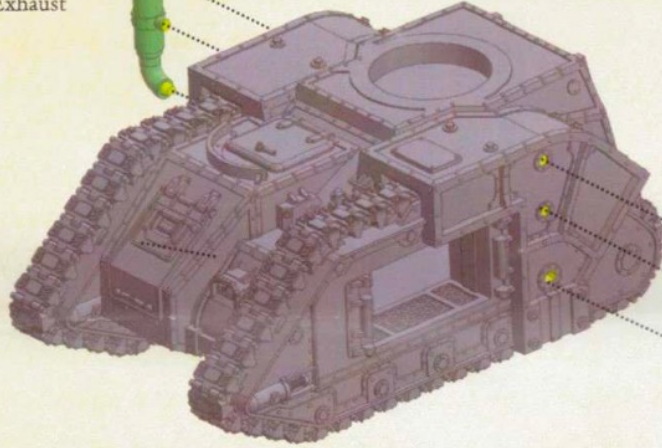


22. Left Track Unit

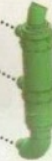


6

20. Right Exhaust

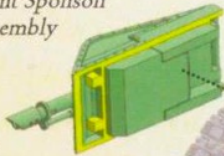


19. Left Exhaust

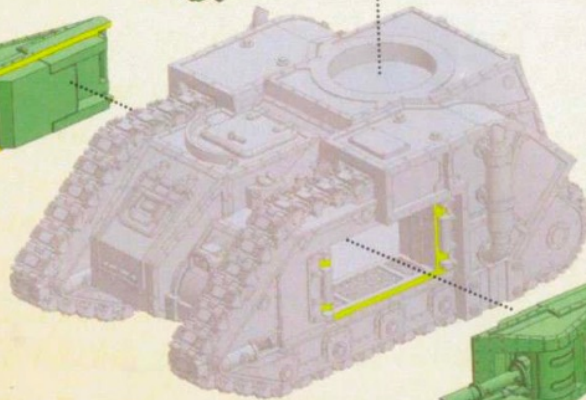
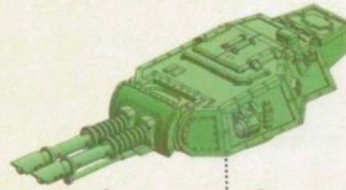


7

Right Sponson Assembly



Turret Assembly



Left Sponson Assembly

