

Free Downloads of Build Instructions,  
Assembly Booklets & How To Guides

**BuildInstructions.com**

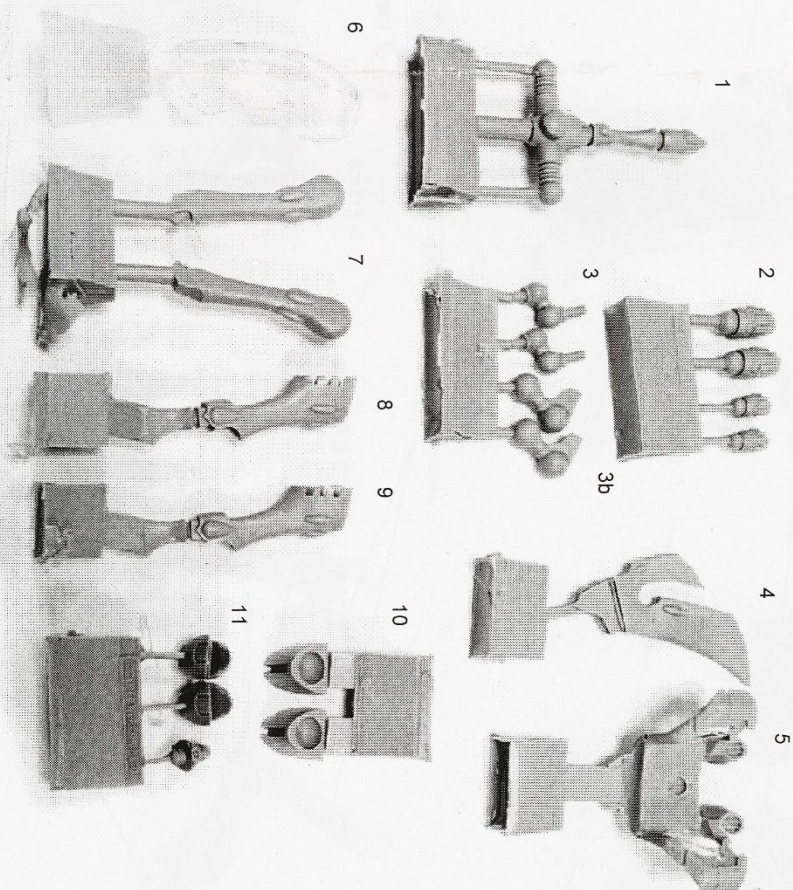
# IMPERIAL™ ARMOUR

## Wasp Assault Walker

Product code : 99590104061

### RESIN COMPONENTS LIST

1. Chassis
2. Thrusters (2x Large and 2x Small)
3. Weapon Mounts
- 3b. Ankles
4. Stabilising Fin
5. Frame
6. Canopy
7. Upper legs
8. Lower leg
9. Lower leg
10. Feet
11. Head and shoulders



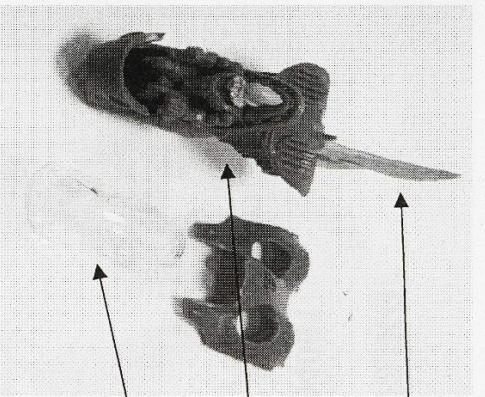
This kit contains all the resin and plastic pieces required to make a Wasp assault walker  
To glue the resin pieces either together or to plastic components use Citadel  
Super Glue.

NOTE: We have cast this conversion kit using the most advanced techniques  
and the best quality resin, but due to the nature of the casting process your  
model may contain very slight air bubbles. These can easily be filled with  
model filler or super glue. Any slight warpage of thin parts can easily be  
corrected by immersing the part in hot tap water for about 1 minute then  
carefully bending it back into shape.

#### THIS IS NOT A TOY

Not suitable for children under 15 years of age.

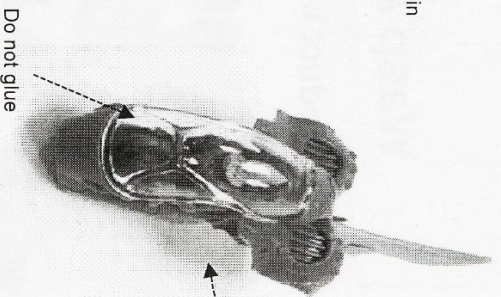
WARNING: Resin dust can be harmful if inhaled. Always wear a dust  
mask or respirator when sanding or sawing resin parts.



4. Stabilising Fin

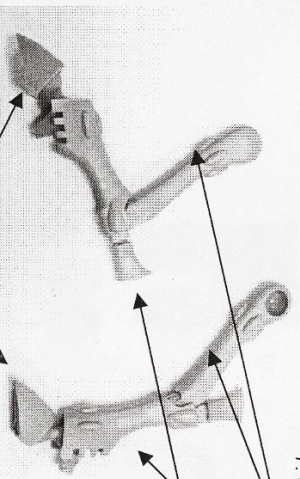
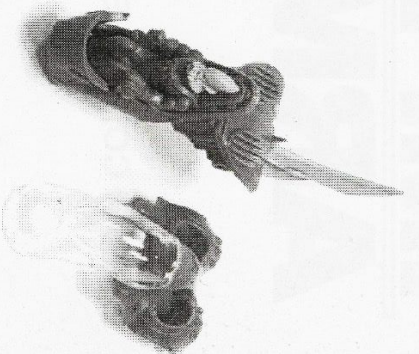
11. Head

6. Canopy



Do not glue

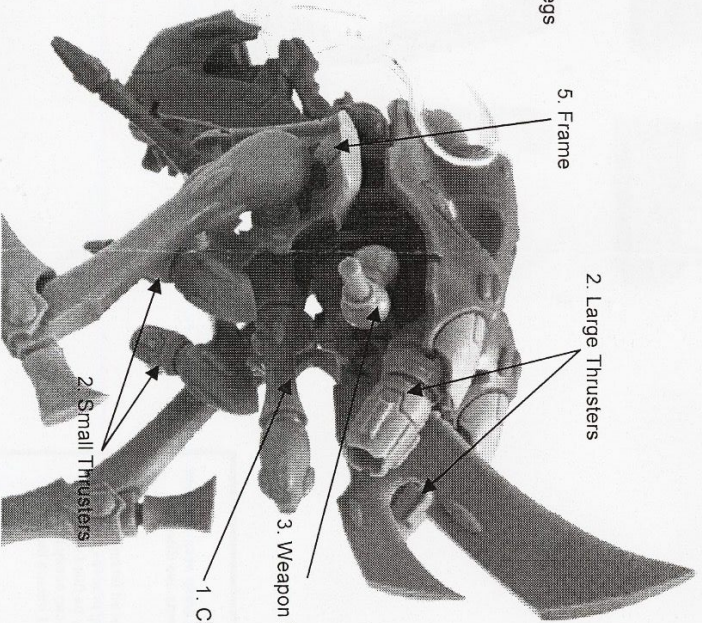
Dark colour parts are from the Eldar War Walker kit. Glue the canopy to the top hull and check the canopy fitting against the hull. Do not glue this down until after you have painted the pilot. Also do not spray the canopy with primer unless you do not wish to be able to see through it!



7. Upper legs

8 & 9. Lower Legs

10. Feet & 3b Ankles

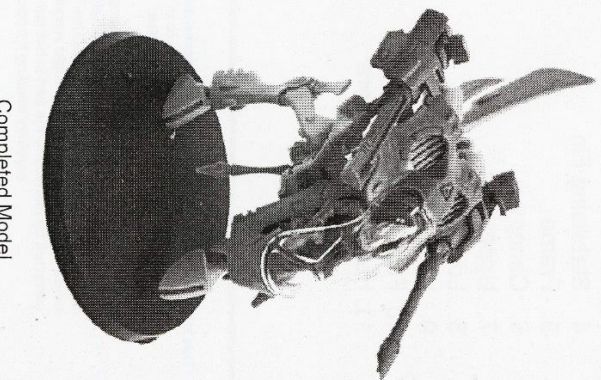


5. Frame

2. Large Thrusters

1. Chassis

2. Small Thrusters



Completed Model