



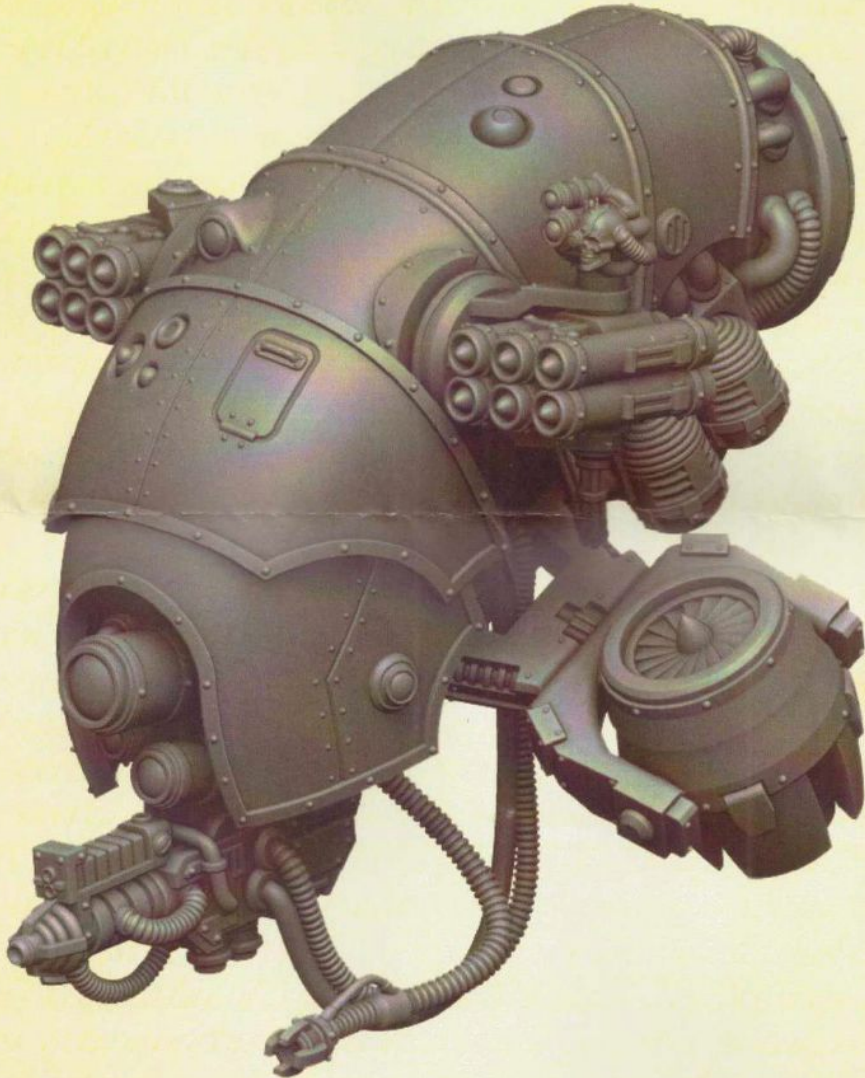
Free Downloads of Build Instructions,
Assembly Booklets & How To Guides

BuildInstructions.com

MECHANICUM

VULTARAX STRATOS-AUTOMATA

The Vultarax was the most common stratos-automata in widespread use by the Mechanicum Taghmata at the outbreak of the wars of the Horus Heresy. A robust, multi-role war engine, heavily armed and fitted with sophisticated sensory gear, it was ably suited to operating in diverse and hostile environments. The Vultarax proved itself a keystone of both Mechanicum Explorator expedition forces as an armed, high mobility scout and as a hunter-killer and rapid-response unit in open battle.



THIS IS NOT A TOY

Not suitable for children under 15 years of age.

WARNING: Resin dust can be harmful if inhaled.

Always wear a dust mask or respirator when sanding or sawing resin parts.

www.forgeworld.co.uk



993201080141






Components

Before assembly, check that none of the components are missing.

- | | |
|-------------------------|-----------------------|
| 1. Body | 11. Sensor Unit |
| 2. Stabiliser Jet x4 | 12. Arc Cannon |
| 3. Right Bracket | 13. Arc Power Cable |
| 4. Left Bracket | 14. Front Shield |
| 5. Right Engine Support | 15. Right Missile Pod |
| 6. Left Engine Support | 16. Left Missile Pod |
| 7. Engine Pivot x2 | 17. Servo Scope |
| 8. Engine x2 | 18. Data Cable |
| 9. Right Intake | 19. Mechadendrite 1 |
| 10. Left Intake | 20. Mechadendrite 2 |



Assembly Legend

- | | |
|---------------------|---|
| Parts for Assembly |  |
| Remove Shim |  |
| Note |  |
| Do Not Glue |  |
| Insert | |
| Component Highlight | ————— |
| Hidden Component | |
| Reverse Angle |  |

Preparing the Model for Assembly

Before assembling the model, wash each part thoroughly with an abrasive brush, such as a toothbrush, to remove any model release agent that may still be on the surface of the parts. Then, remove any excess resin such as mould lines, casting gates, vents and shims. For a more detailed guide to working with resin models, go to the Downloads section of the Forge World website.

This kit contains all the pieces required to construct a Mechanicum Vultarax Stratos-automata. To glue the resin pieces together, use Citadel Super Glue.

NOTE: We have cast this kit using advanced techniques and the best quality resin, but due to the nature of the casting process, your model may contain small air bubbles. These can easily be filled with model filler or super glue. Any slight warpage of thin parts can easily be corrected by immersing the part in hot water for about 1 minute, then carefully bending it back into shape.

If you need to contact the Forge World Customer Service team regarding this model, you can get in touch via email - forgeworld@gwplc.com - or call:

0115 900 4995 within the UK

011 44 115 900 4995 from the USA and Canada

0011 44 115 900 4995 from Australia

011 44 115 900 4995 from Europe and the rest of the world.

I

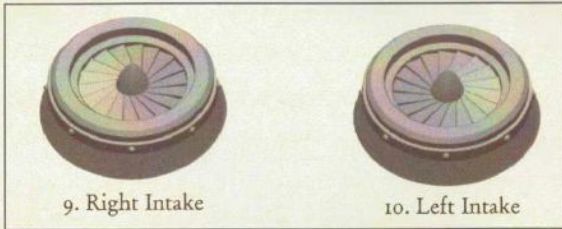
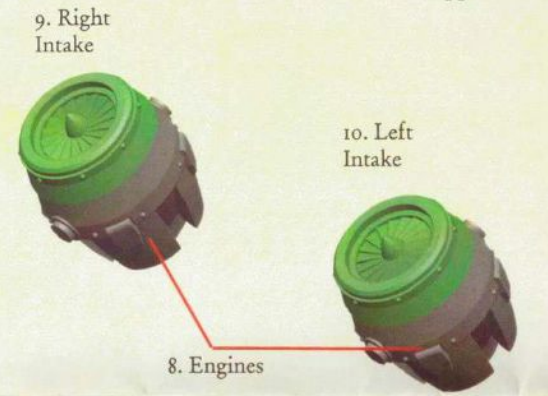
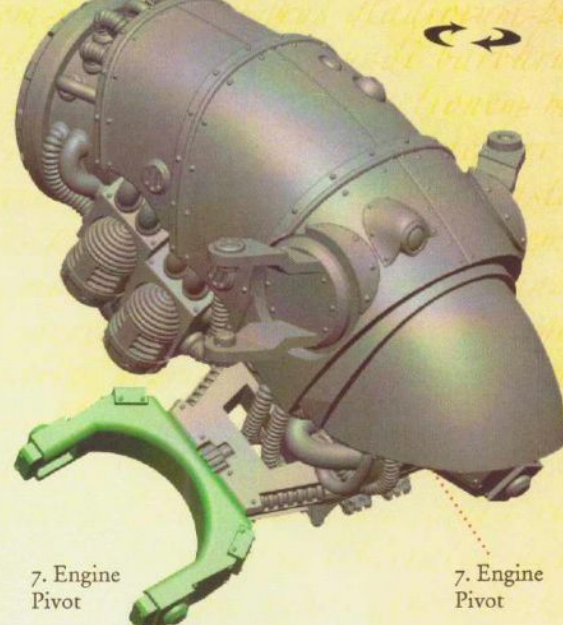
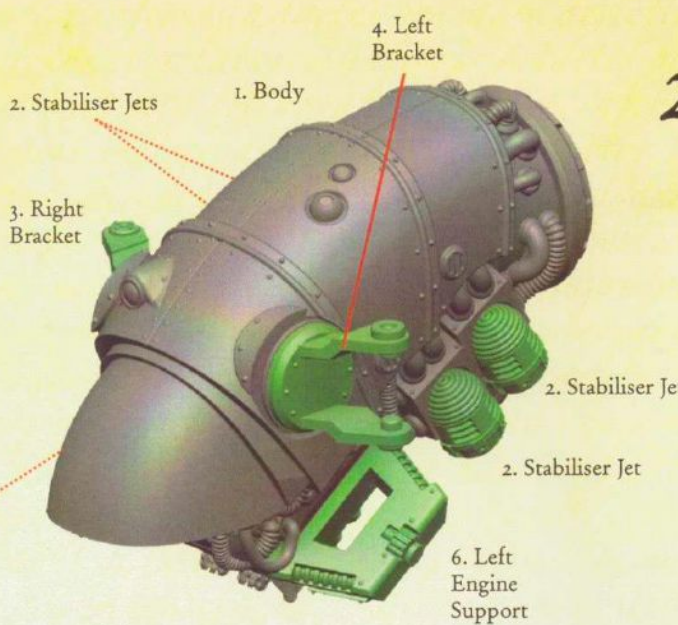
3

5

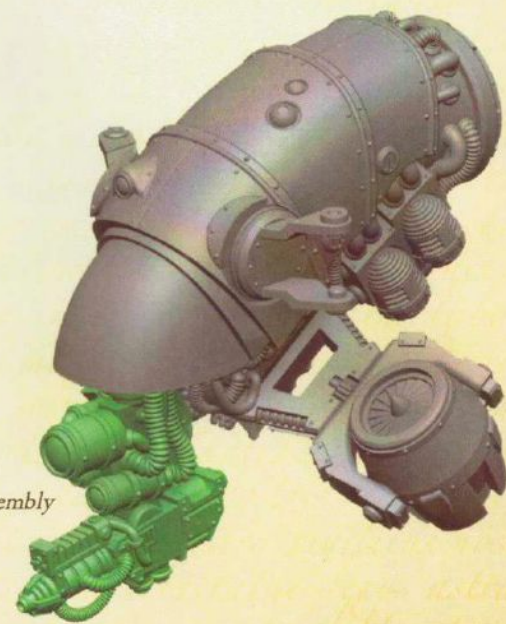
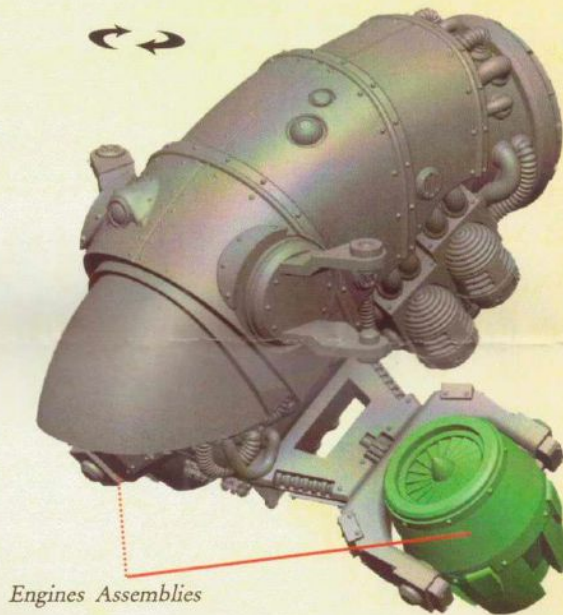
2

4

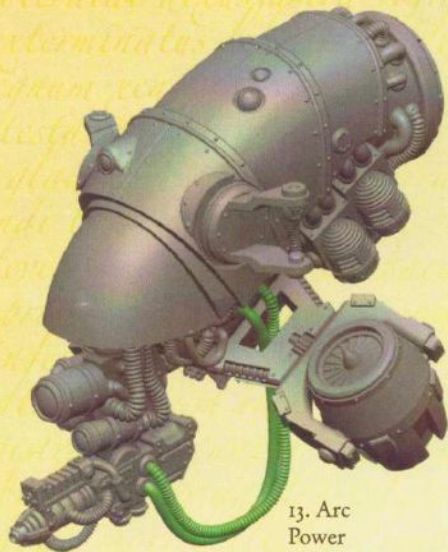
6



! The direction of the turbine blades help to determine which the Right and Left Intakes are.

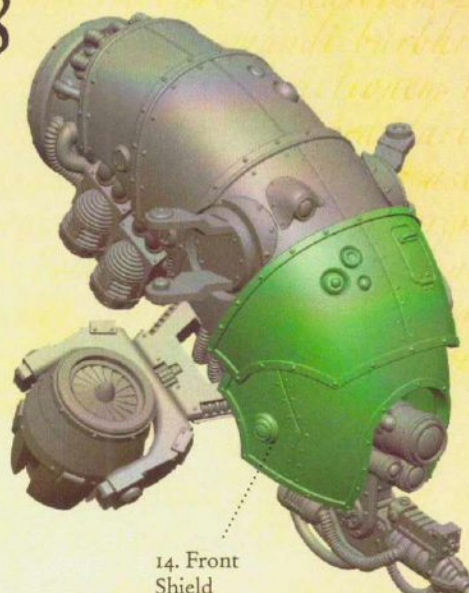


7



13. Arc Power Cable

8

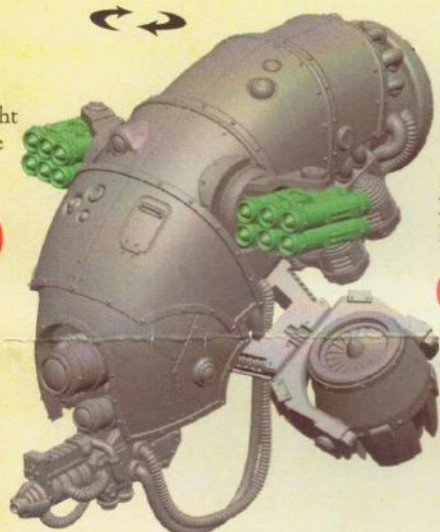


14. Front Shield

9



15. Right Missile Pod

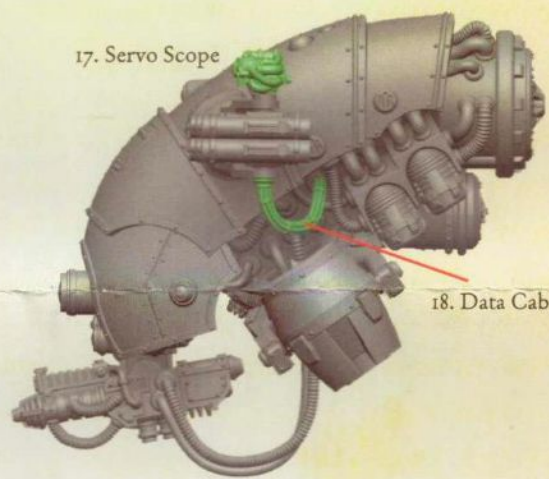


16. Left Missile Pod



10

17. Servo Scope



18. Data Cable

11



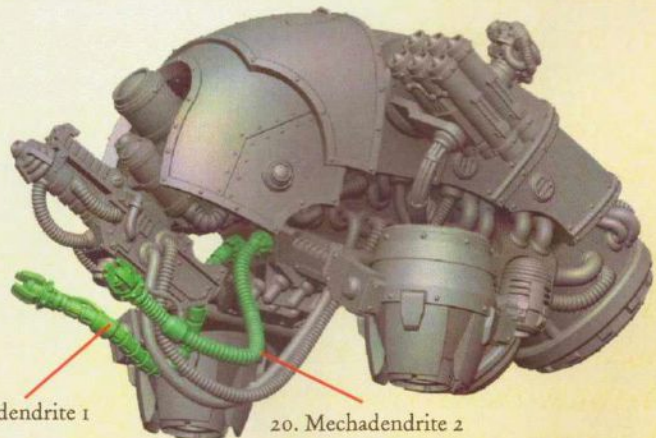
20. Mechadendrite 2

19. Mechadendrite 1



Use a hot air gun or hairdryer to gently heat these components. They will soon become malleable – allowing you to position them how you wish.

12



19. Mechadendrite 1

20. Mechadendrite 2