

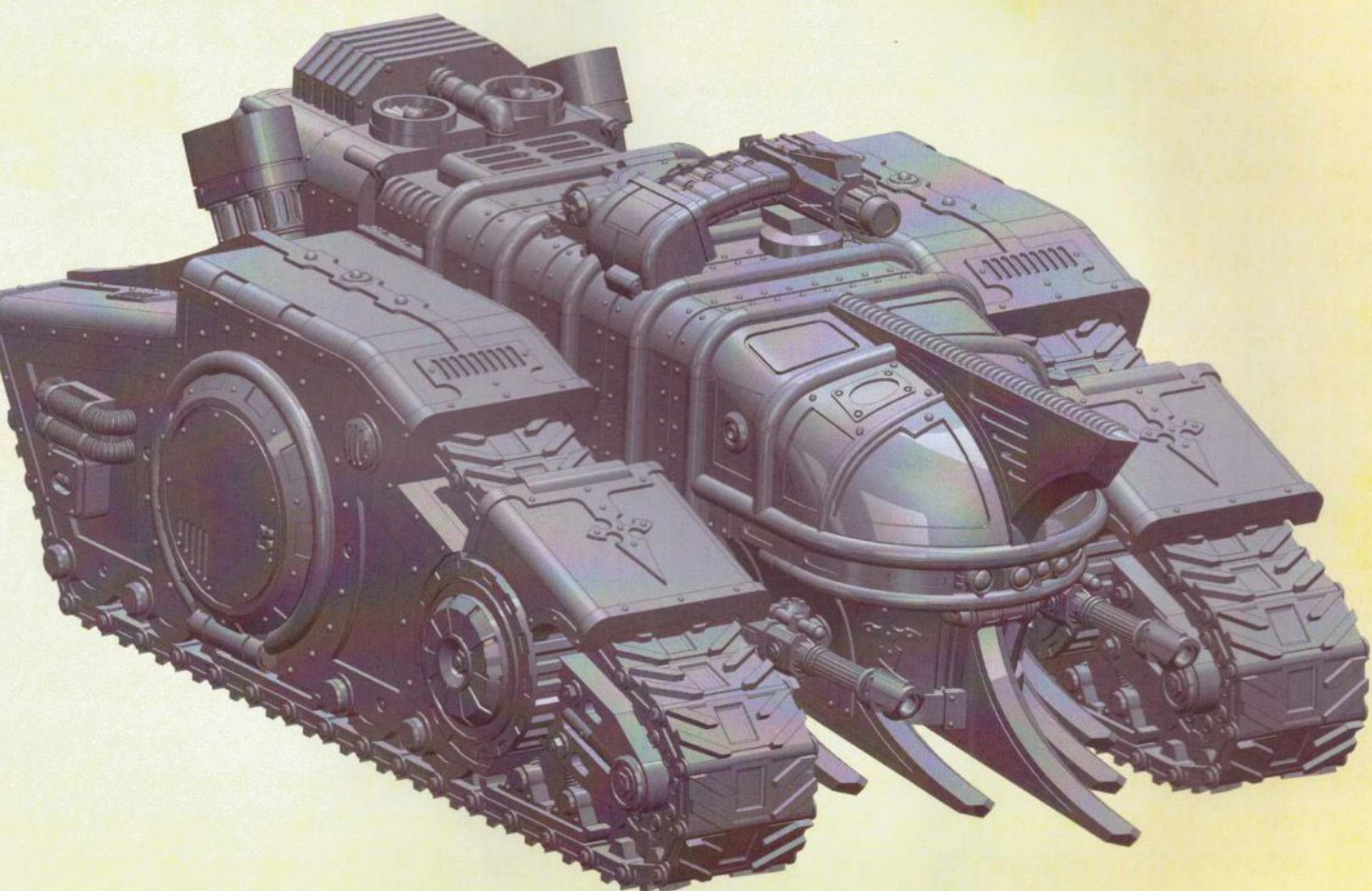
Free Downloads of Build Instructions,  
Assembly Booklets & How To Guides

**BuildInstructions.com**

# MECHANICUM MACROCARID EXPLORATOR

*Mechanicum Macrocarids are a broad classification of heavily armoured and fully environmentally sealed vehicles. They are used in both a frontline combat role as well as serving as mobile command and exploration vehicles for Mechanicum magos when their forces are deployed in hostile or unknown war zones.*

*No two Macrocarids are exactly the same, each having been repeatedly redesigned and modified by their masters to suit a particular mission, sphere of operations or doctrinal eccentricity. These changes can range from barely discernable alterations to the Macrocarid's internal systems to a whole scale refit of the hull.*



THIS IS NOT A TOY

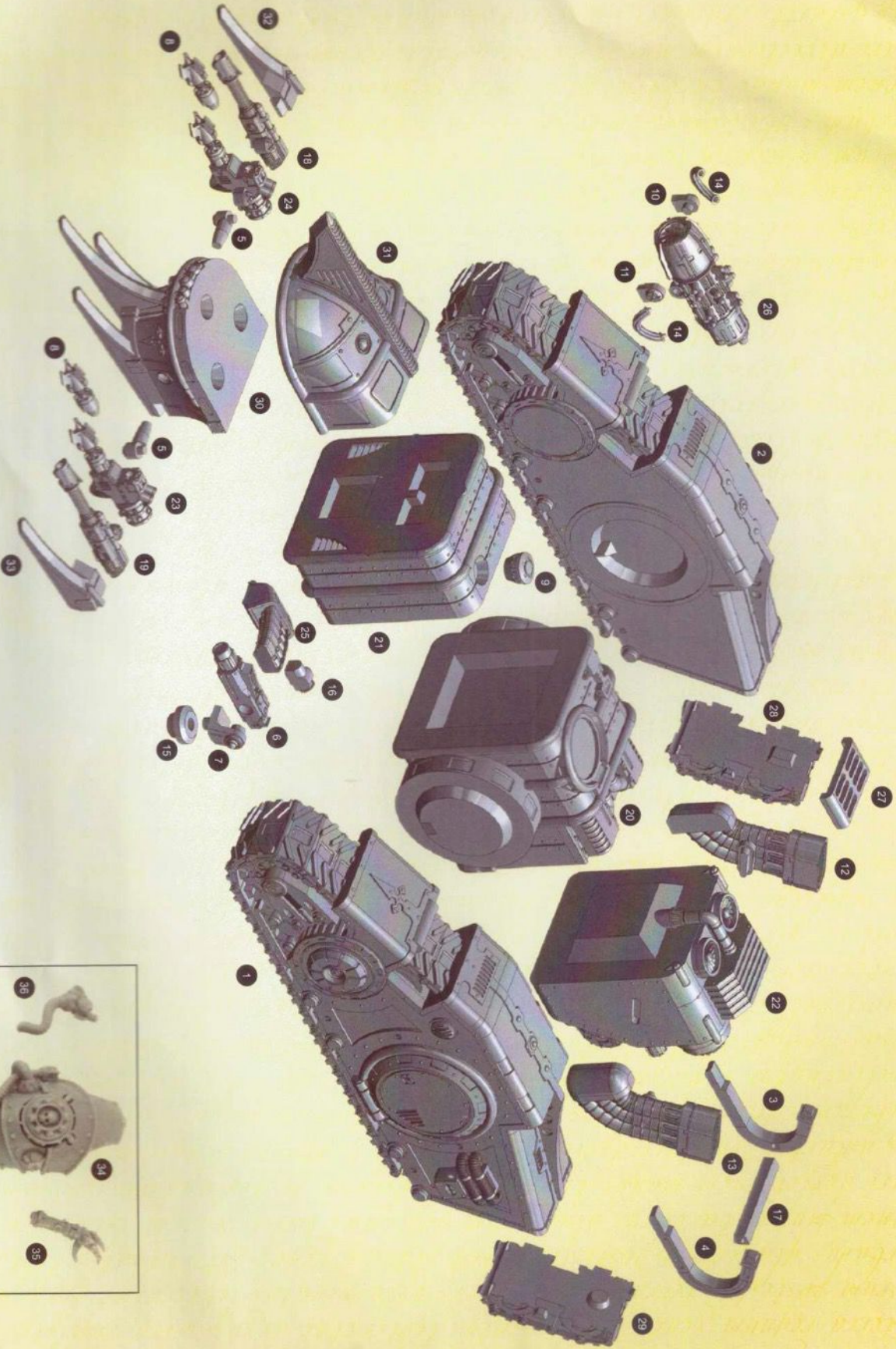
Not suitable for children under 15 years of age.

WARNING: Resin dust can be harmful if inhaled. Always wear a dust mask or respirator when sanding or sawing resin parts.

[www.forgeworld.co.uk](http://www.forgeworld.co.uk)

# Components










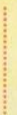
Before assembly, check that none of the components are missing.



1. Left Track Section
2. Right Track Section
3. Engine Frame Right
4. Engine Frame Left
5. Forward Weapon Mount x2
6. Mauler Pattern Bolt Cannon
7. Pintle Mount
8. Irad Engine Emitter x2
9. Vent
10. Graviton Imploder Mount 1
11. Graviton Imploder Mount 2
12. Left Exhaust
13. Right Exhaust
14. Graviton Imploder Cables x2
15. Gun Pivot
16. Ammo Feed Motor
17. Engine Frame Crossbar
18. Right Lascannon
19. Left Lascannon
20. Central Hull Section
21. Front Hull Section
22. Engine
23. Left Irad Engine
24. Right Irad Engine
25. Ammo Feed
26. Graviton Imploder
27. Engine Cover
28. Right Rear Track Section
29. Left Rear Track Section
30. Lower Prow

31. Upper Prow
32. Right Prow Prong
33. Left Prow Prong
34. Servitor
35. Servitor Right Arm
36. Servitor Left Arm

## Assembly Legend

- Parts for Assembly** 
- Note** 
- Optional Assembly**  
- Glue Contact Area** 
- Reverse Angle** 
- Do Not Glue** 
- Insert** 
- Component Highlight** 
- Hidden Component** 

## Preparing the Model for Assembly

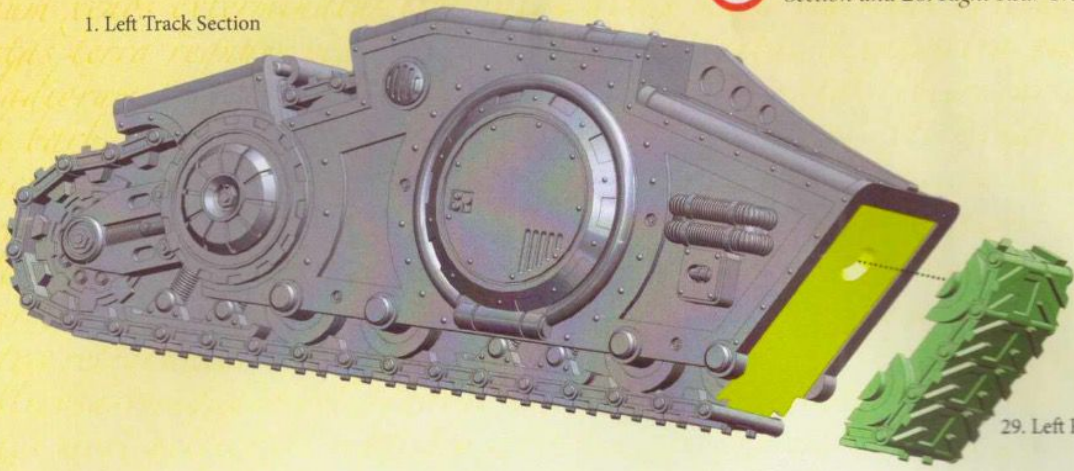
Before assembling the model, wash each part thoroughly with an abrasive brush, such as a toothbrush, to remove any model release agent that may still be on the surface of the parts. Then, remove any excess resin such as mould lines, casting gates, vents and shims. For a more detailed guide to working with resin models, go to the Downloads section of the Forge World website.

This kit contains all the pieces required to construct the Mechanicum Macrocarrid Explorer. To glue the resin pieces together, use Citadel Super Glue.

**NOTE:** We have cast this kit using the advanced techniques and the best quality resin, but due to the nature of the casting process, your model may contain small air bubbles. These can easily be filled with model filler or super glue. Any slight warpage of thin parts can easily be corrected by immersing the part in hot water for about 1 minute, then bending it back into shape.

# I

1. Left Track Section



Repeat this stage for parts 2. Right Track Section and 28. Right Rear Track Section.

29. Left Rear Track Section

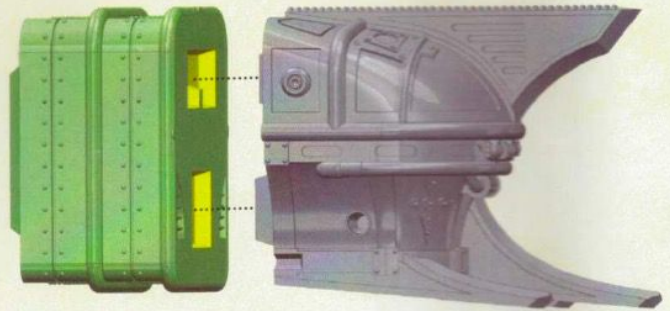
## 2

31. Upper Prow



30. Lower Prow

## 3



21. Front Hull Section

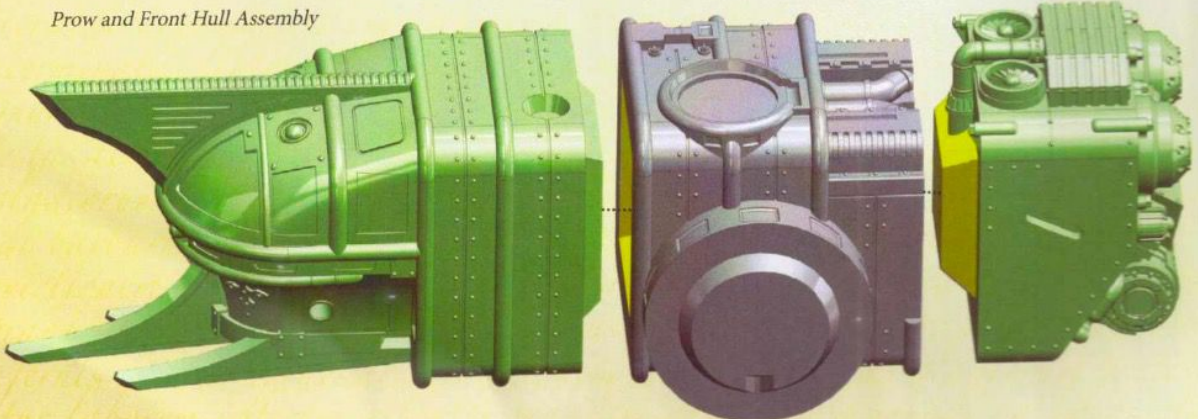
Prow Assembly

## 4

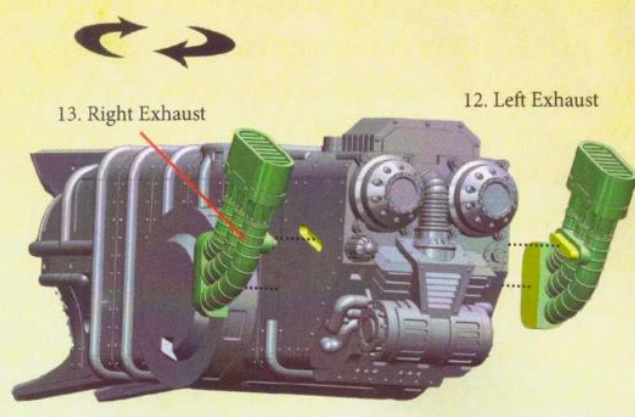
Prow and Front Hull Assembly

20. Central Hull Section

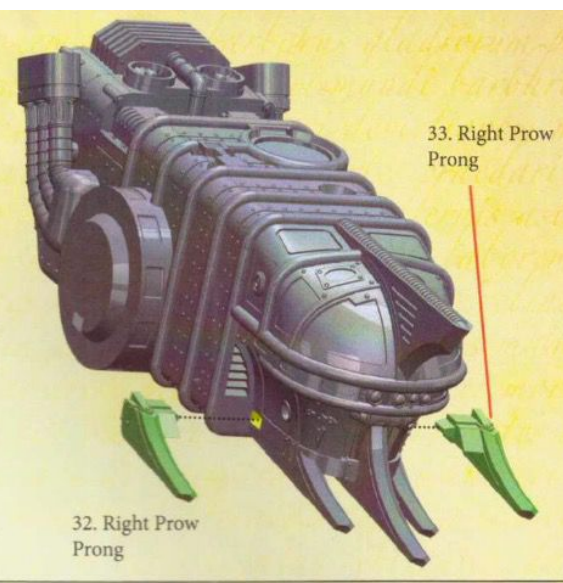
22. Engine



5

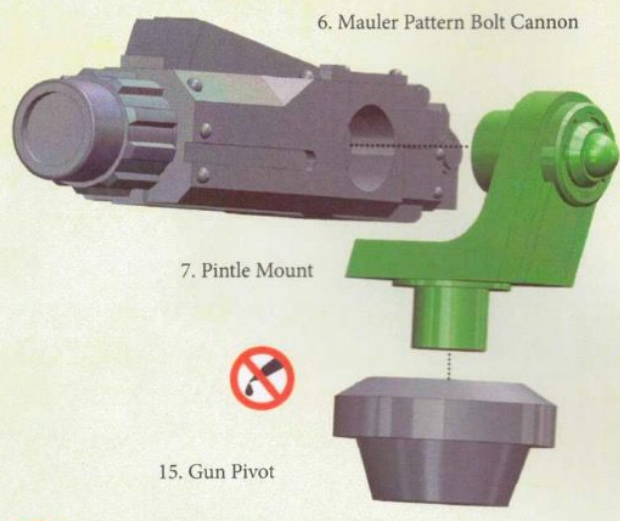


6



### Mauler Bolt Cannon Option

7



8

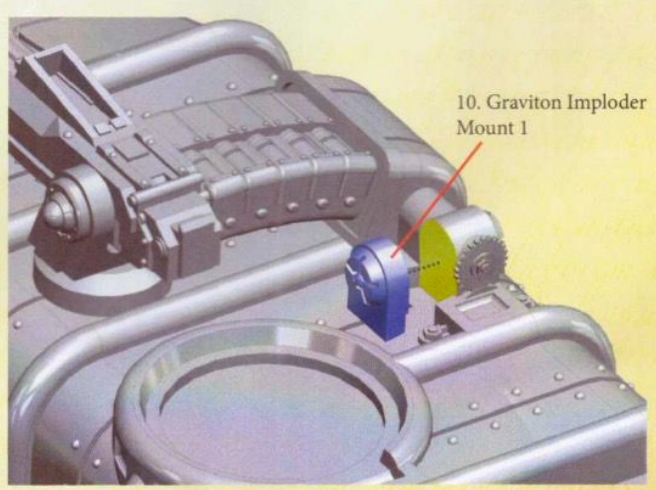


**!** Complete Stages 7-10 for the Mauler Pattern Bolt Cannon weapon option only. For the Graviton Imploder weapon option, go to stage 11.

9



10



**!** Attach part 10. Graviton Imploder Mount 1 to the back of part 16. Ammo Feed Motor.

# Graviton Imploder Option

## I1

26. Graviton Imploder



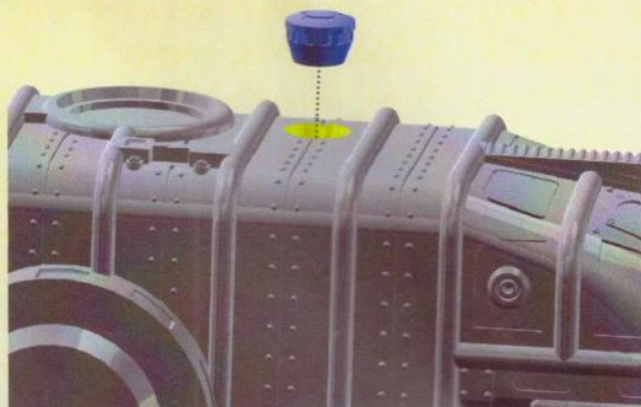
11. Graviton Imploder Mount 2



Complete Stages I1-I6 for the Graviton Imploder weapon option only.

## I2

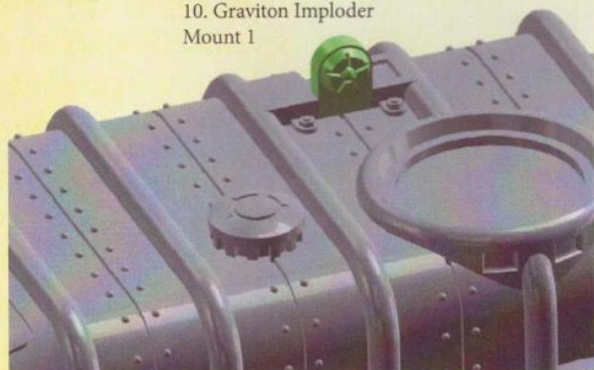
9. Vent



## I3

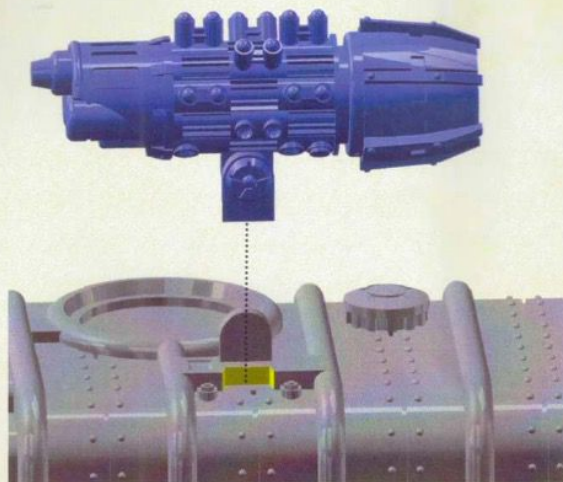


10. Graviton Imploder Mount 1



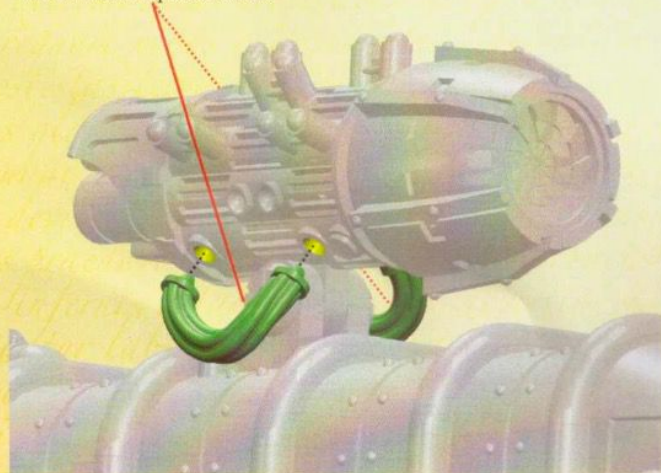
## I4

Graviton Imploder Assembly



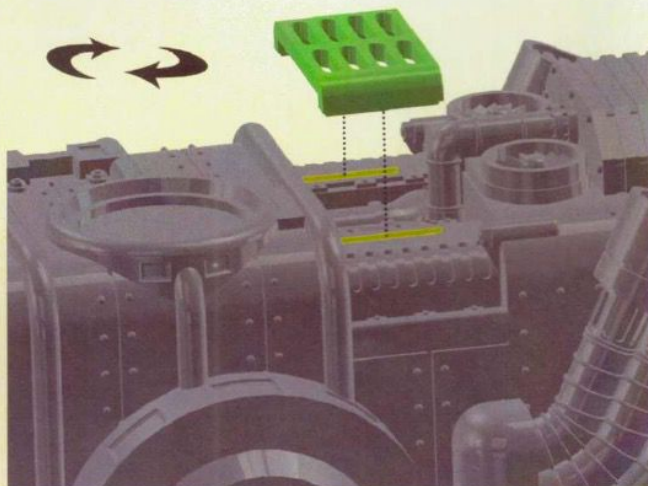
## I5

14. Graviton Imploder Cables



## I6

27. Engine Cover



## Lascannon Hull Weapon Option

I7

19. Left Lascannon



5. Forward Weapon Mount

**!** Repeat this stage for part 18. Right Lascannon and the second Forward Weapon Mount. Stages 17-18 are for the Lascannon weapon options only. For the Irad Engine weapon options, go to stage 19.

I8



Right Lascannon Assembly

**!** Repeat with the Left Lascannon Assembly.

## Irad Engine Hull Weapon Option

I9

8. Irad Engine Emitter

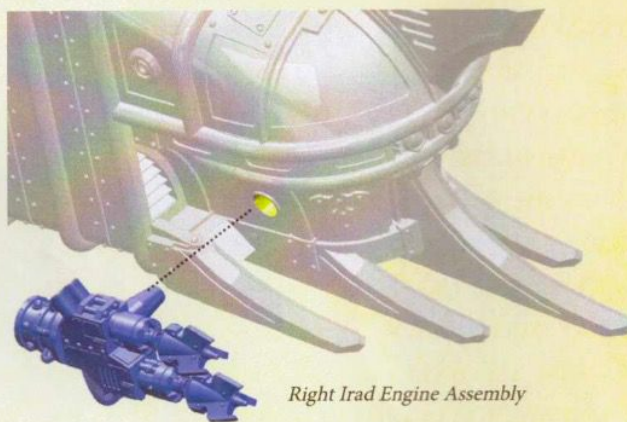


24. Right Irad Engine

5. Forward Weapon Mount

**!** Repeat this stage for part 23. Left Irad Engine, the second Forward Weapon Mount and Irad Engine Emitter. Stages 19 and 20 are for the Irad Engine weapon options only. For the Lascannon weapon options, go to stage 17.

20

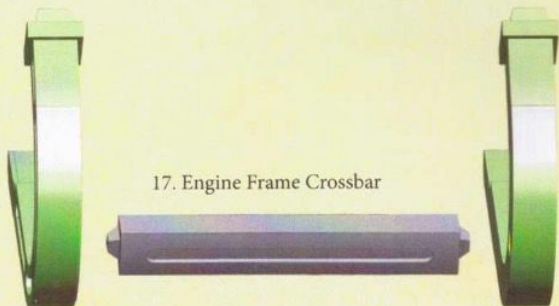


Right Irad Engine Assembly

**!** Repeat with the Left Irad Engine Assembly.

21

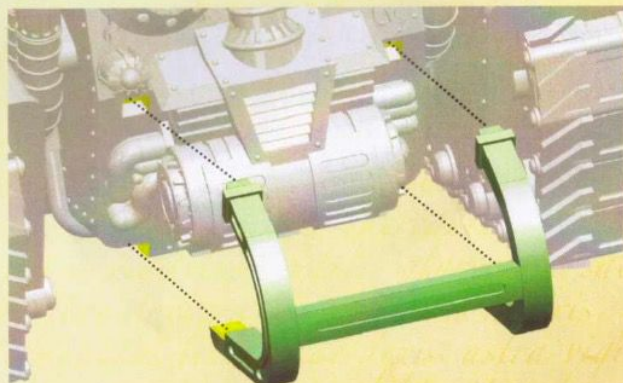
17. Engine Frame Crossbar



4. Engine Frame Left

3. Engine Frame Right

22

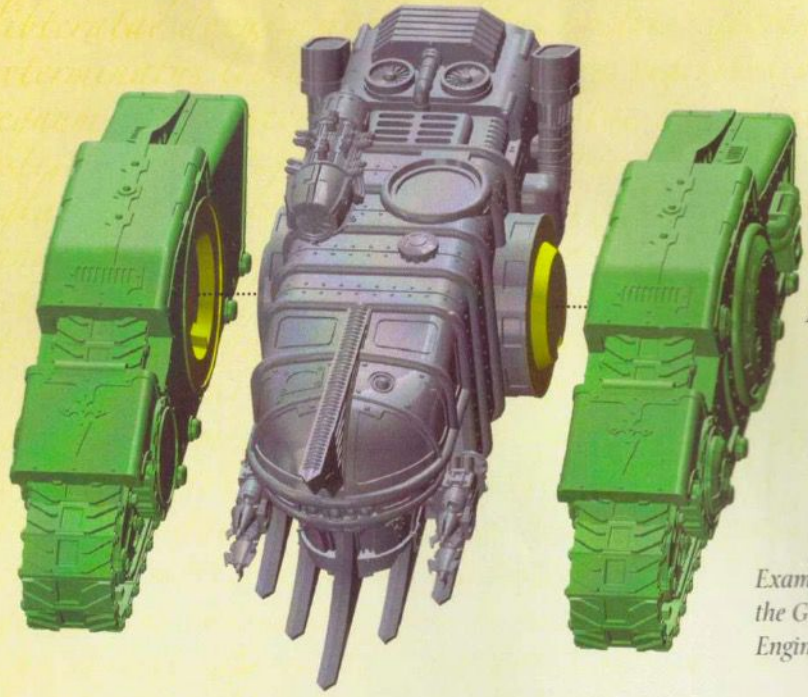


Engine Frame Assembly



Right Track Assembly

Left Track Assembly

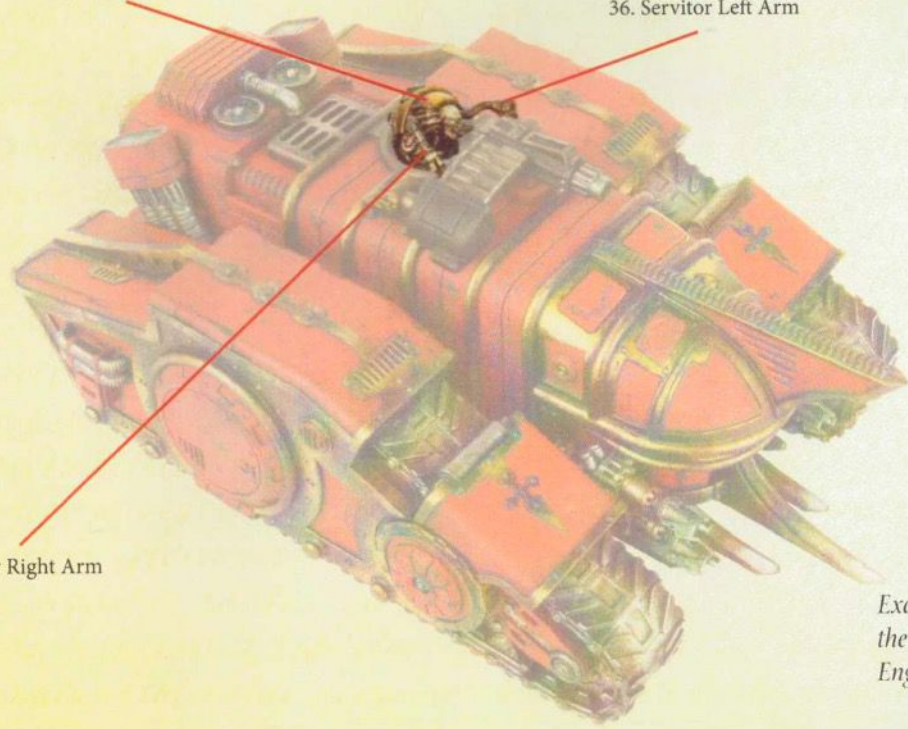


Example shown here is built with the Graviton Imploder and Irad Engine weapon options.

34. Servitor

36. Servitor Left Arm

35. Servitor Right Arm

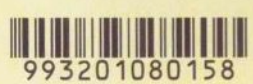


Example shown here is built with the Mauler Bolt Cannon and Irad Engine weapon options.

If you need to contact the Forge World Customer Service team regarding this model, you can get in touch via email - [forgeworld@gwplc.com](mailto:forgeworld@gwplc.com) - or call: 0115 900 4995 within the UK, 011 44 115 900 4995 from the USA and Canada, 0011 44 115 900 4995 from Australia, 011 44 115 900 4995 from Europe and the rest of the world.

© Copyright Games Workshop Limited 2016. All rights reserved.

[www.forgeworld.co.uk](http://www.forgeworld.co.uk)



[forgeworld.co.uk](http://forgeworld.co.uk)