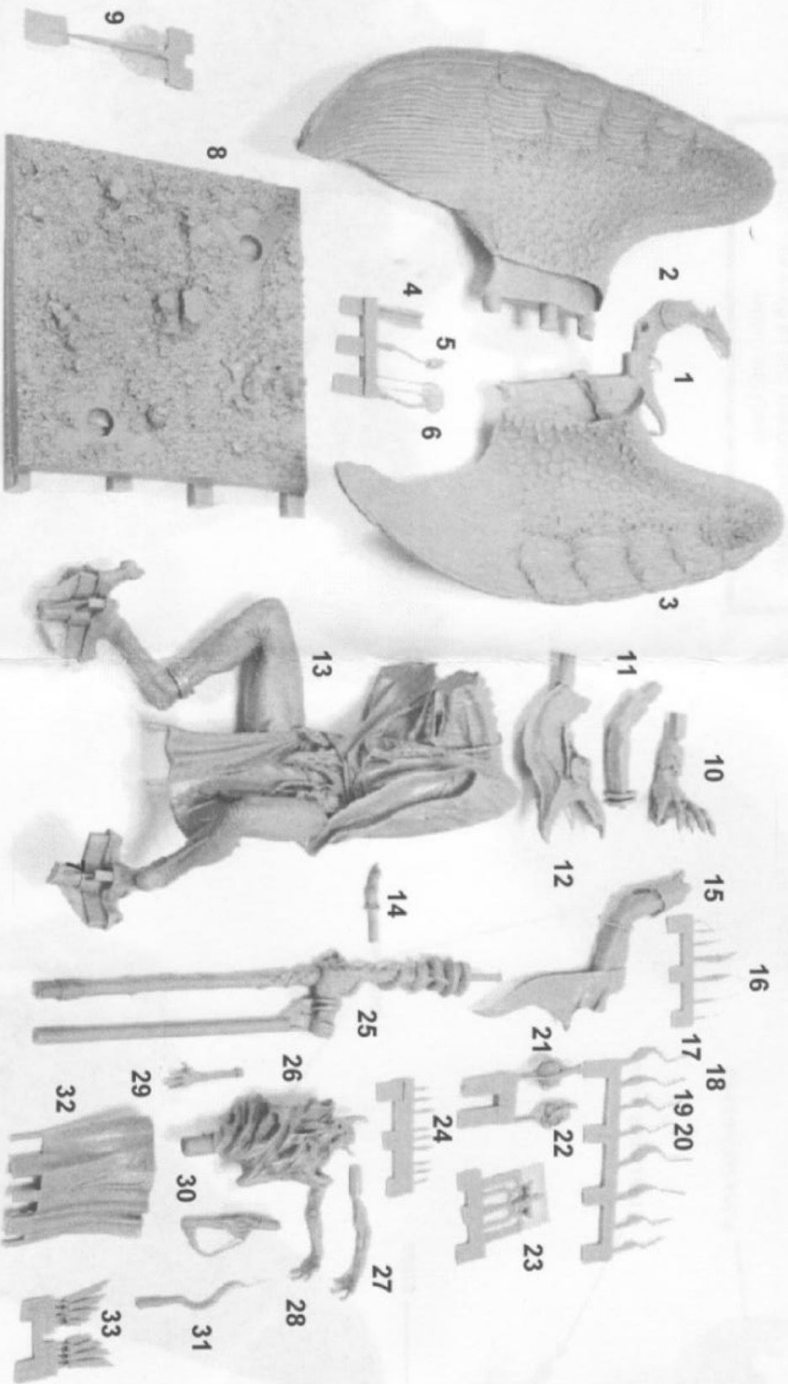




Free Downloads of Build Instructions,
Assembly Booklets & How To Guides

BuildInstructions.com



COMPONENTS LIST

- | | | |
|------------------------|----------------------|---------------------|
| 1. STAFF FIGURE HEAD | 16. NECK SPINES (x7) | 31. HORROR TONGUE |
| 2. RIGHT WING | 17. FRONT CLAWS (x2) | 32. TABARD |
| 3. LEFT WING | 18. REAR CLAWS (x2) | 33. HEAD CREST (x2) |
| 4. STAFF SUPPORT | 19. OUTER CLAW (x2) | |
| 5. TALISMAN 1 | 20. INNER CLAW (x2) | |
| 6. TALISMAN 2 | 21. CRYSTAL GLOBE | |
| 7. RIGHT HAND WITH AXE | 22. BIRD SKULLS | |
| 8. BASE | 23. TALISMAN 3 | |
| 9. STAFF BLADE | 24. HEAD SPINES (x9) | |
| 10. RIGHT HAND | 25. STAFF | |
| 11. LEFT HAND | 26. HORRORS | |
| 12. HEAD | 27. HORROR ARM 1 | |
| 13. TORSO | 28. HORROR ARM 2 | |
| 14. LEFT INDEX FINGER | 29. HORROR MOUTH ARM | |
| 15. RIGHT ARM | 30. HORROR CLAW | |

This kit contains all the pieces required to make a complete Lord of Change
To glue the resin pieces together use Citadel Super Glue.

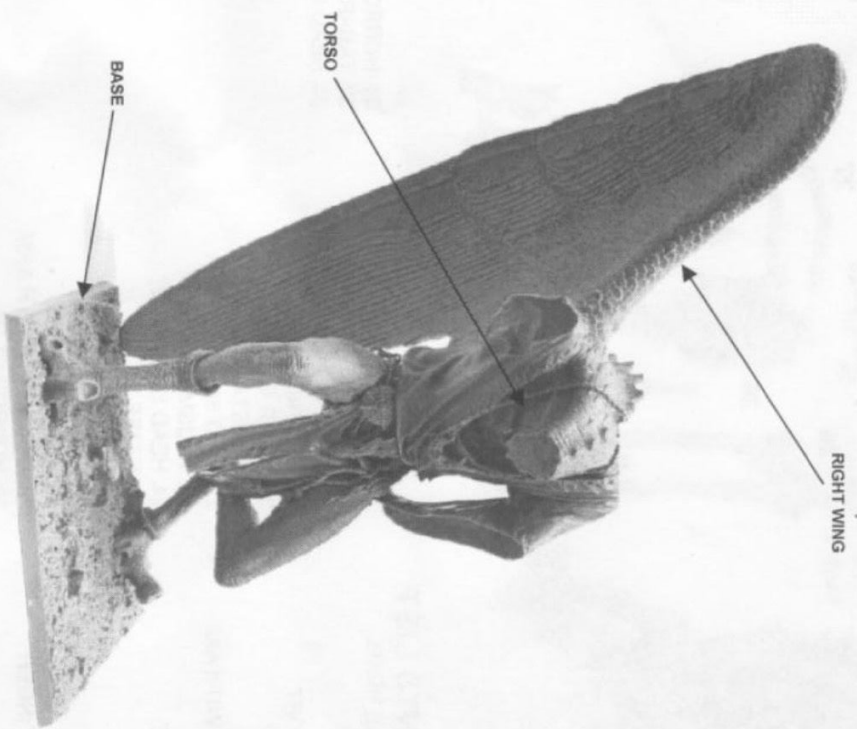
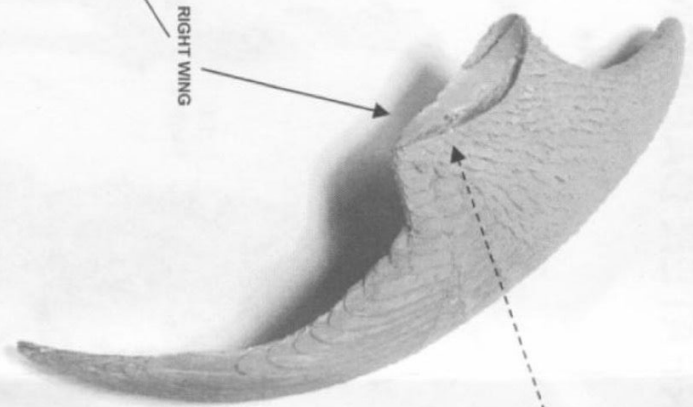
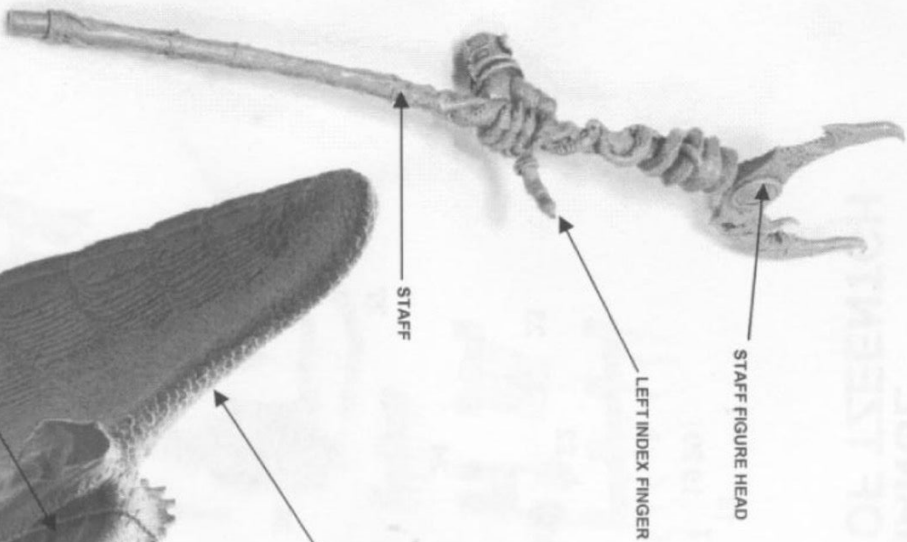
NOTE: We have cast this kit using the most advanced techniques
and the best quality resin, but due to the nature of the casting process your
model may contain very slight air bubbles. These can easily be filled with
model filler or super glue. Any slight warpage of thin parts can easily be
corrected by immersing the part in hot tap water for about 1 minute then
carefully bending it back into shape.

THIS IS NOT A TOY

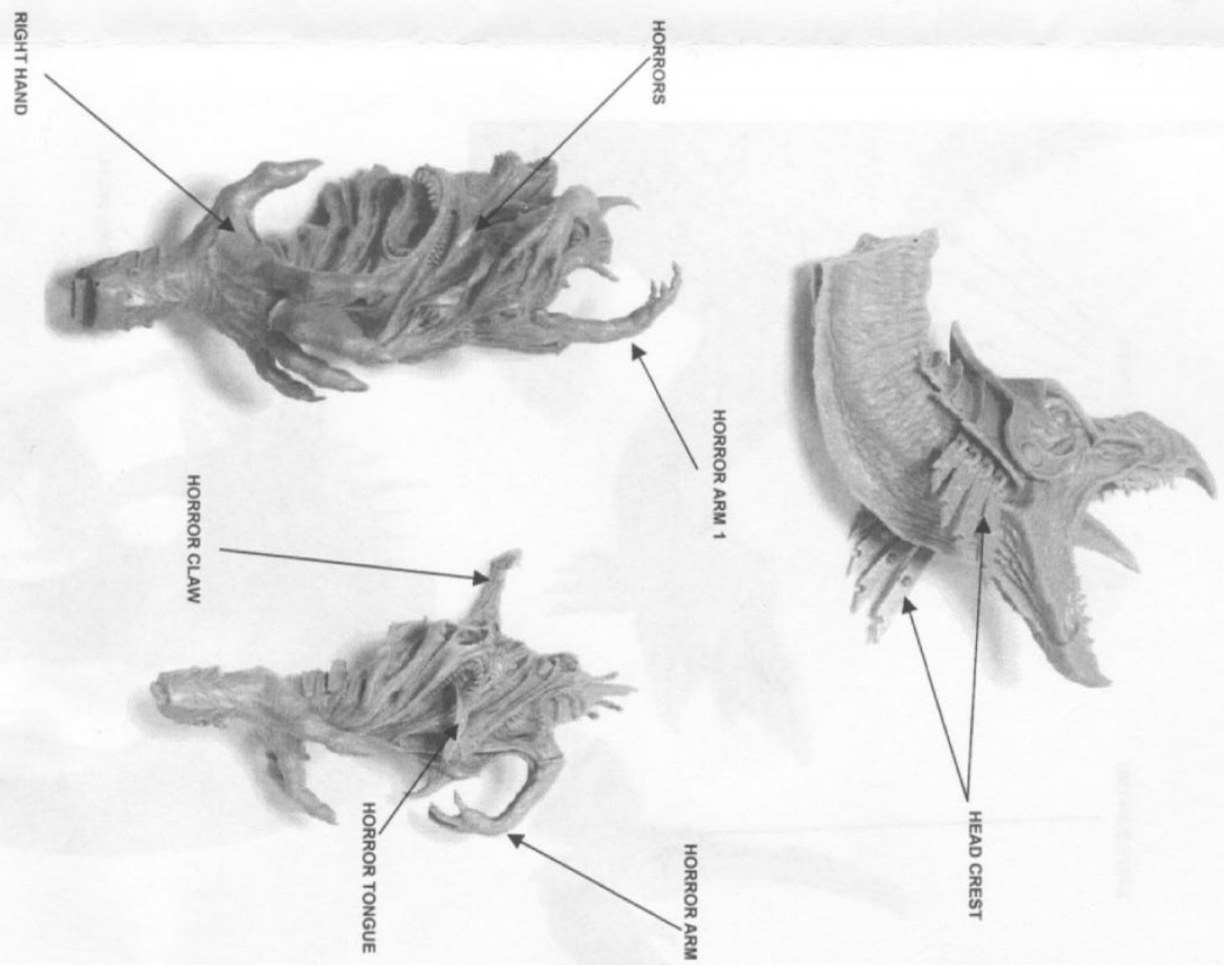
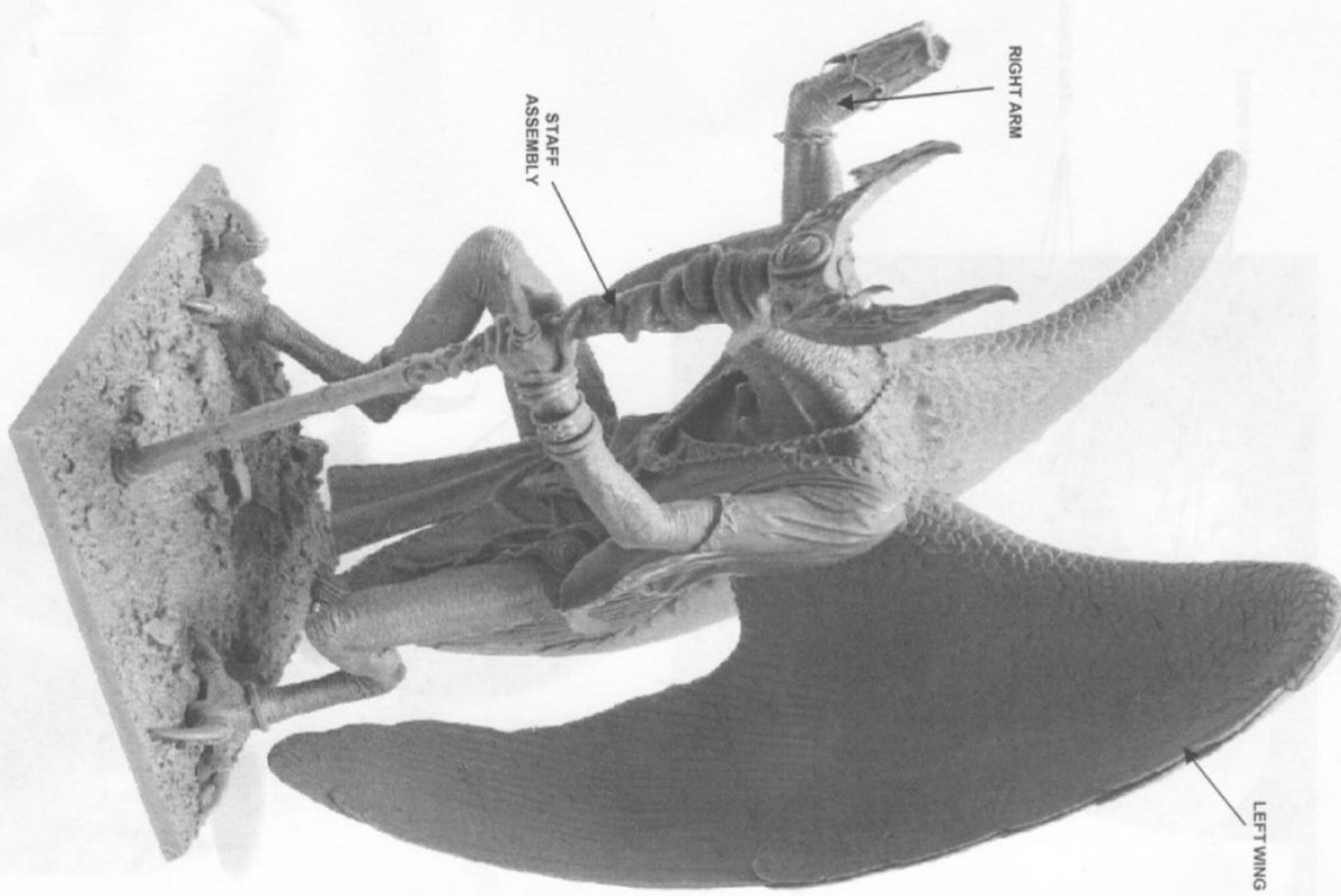
Not suitable for children under 15 years of age.

WARNING: Resin dust can be harmful if inhaled. Always wear a dust
mask or respirator when sanding or sawing resin parts.

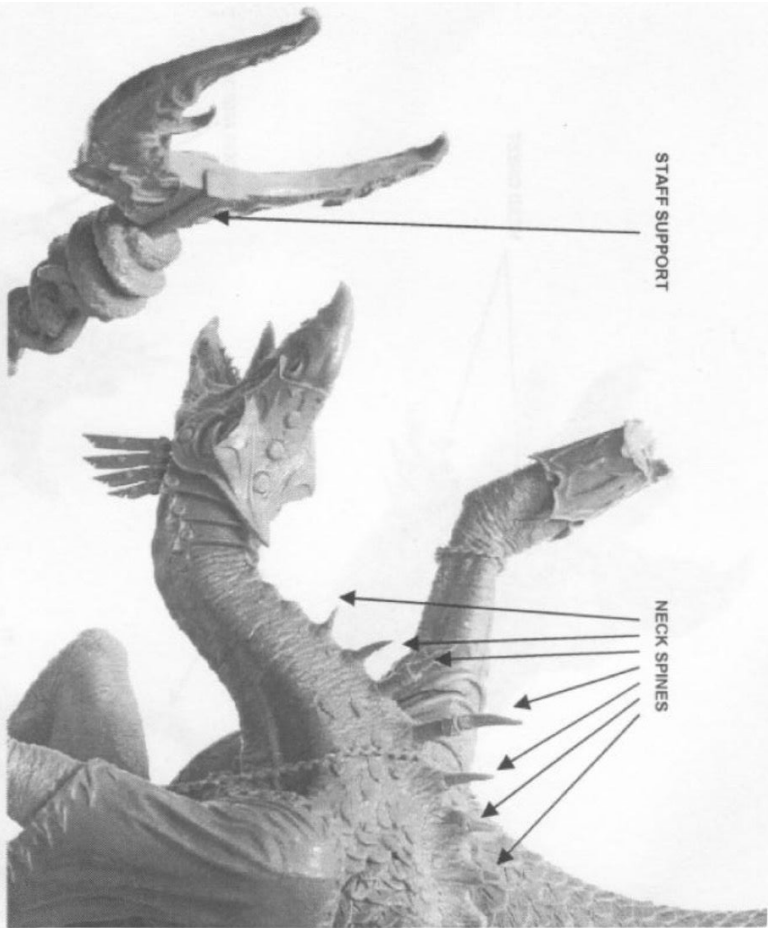
SPECIAL NOTE
Due to complexities of casting large pieces in resin it will be necessary to file down certain components and fill gaps with putty to finish this model.



Product code : MA-WFB-M-015



STAFF SUPPORT

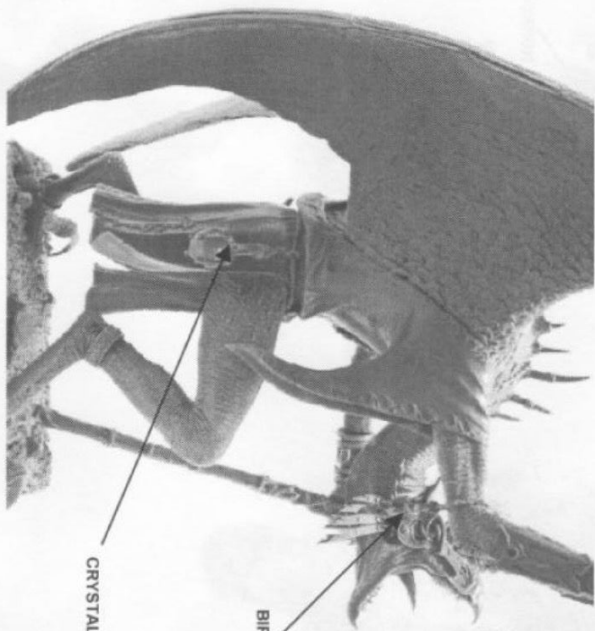


NECK SPINES



HEAD SPINES

HEAD SPINES

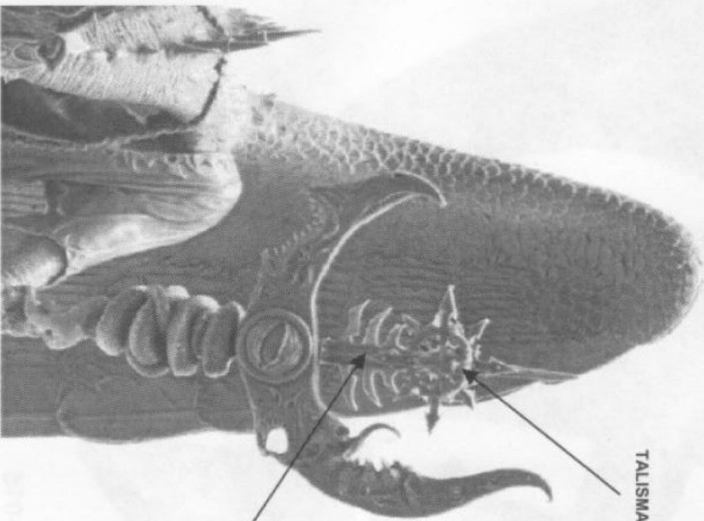


BIRD SKULL

CRYSTAL GLOBE

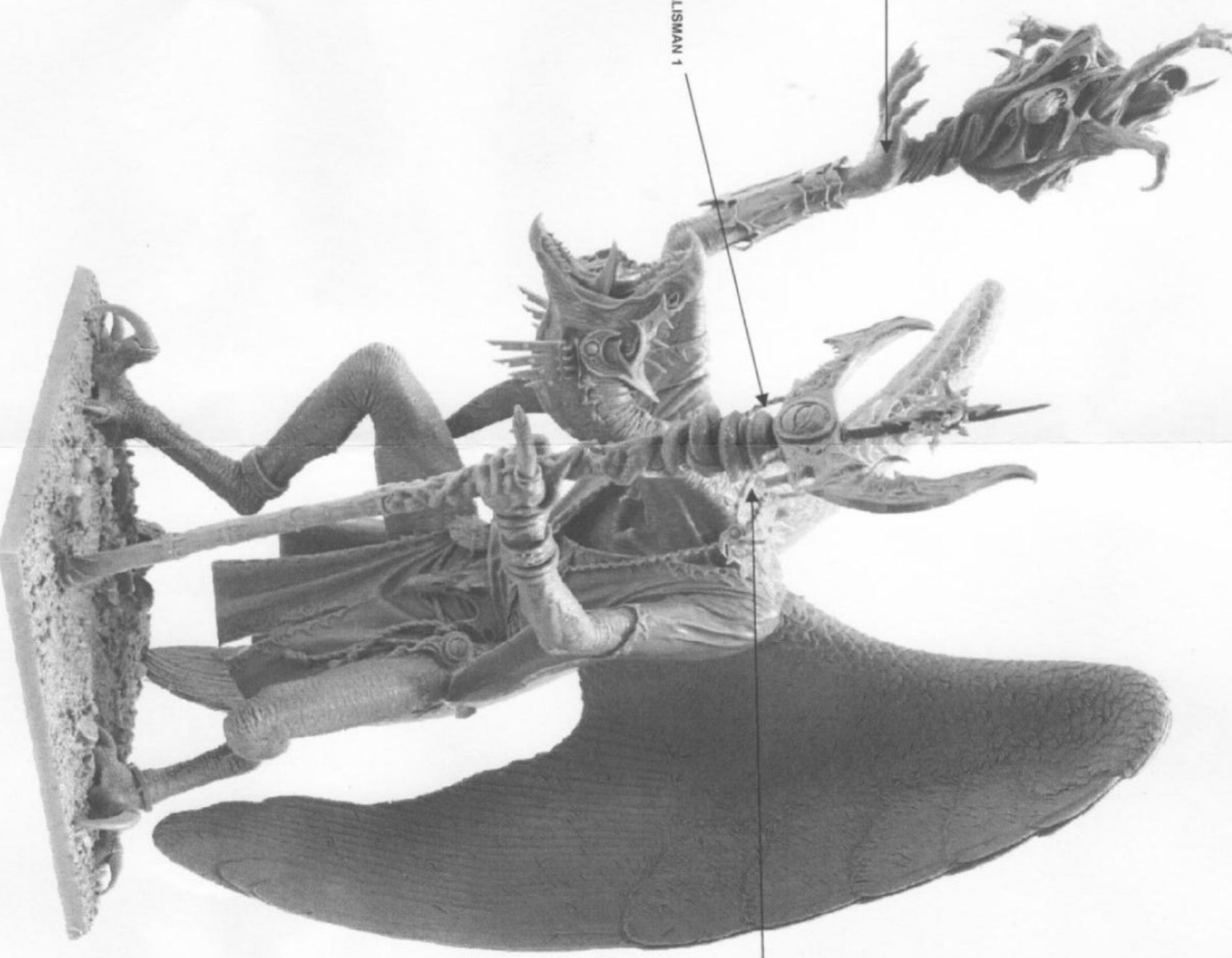
TALISMAN 3

STAFF BLADE



HAND ASSEMBLY

TALISMAN 1



Product code : MA-WFB-M-015