



Free Downloads of Build Instructions,
Assembly Booklets & How To Guides

BuildInstructions.com

IMPERIAL™ ARMOUR

ELDAR PHANTOM TITAN BODY

COMPONENTS LIST - Part 1

1. Head
2. Cocpit
3. Dashboard
4. Hinge
5. Claw
6. Left Hinge Pin (Marked L)
7. Right Hinge Pin (Marked R)
8. Tassels (x2)
9. Left Hand
10. Right Hand
11. Left Upper Arm
12. Right Upper Arm
13. Elbow (x2)
14. Right Large Hand Fin
15. Left Large Hand Fin
16. Left Small Hand Fin
17. Right Small Hand Fin
18. Right Missile Pod
19. Left AA Missile Pod
20. Starboard
21. Pulse Laser

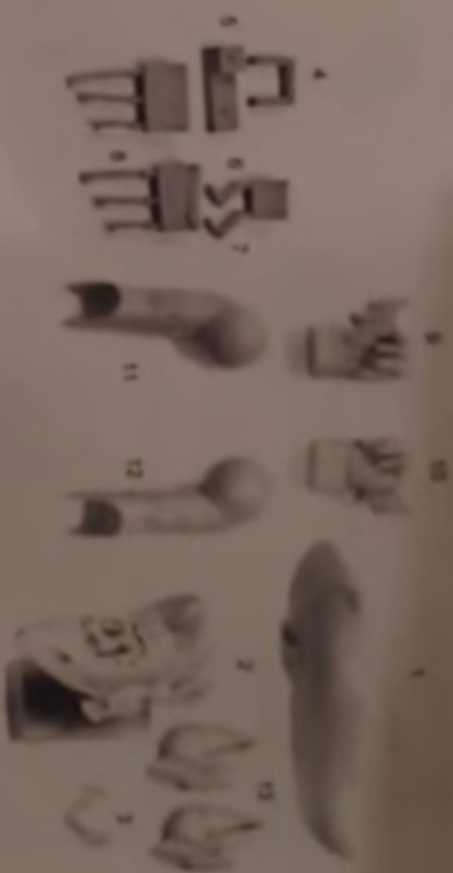
These set contains all the pieces required to build the Eldar Phantom Titan Body.
To glue the main pieces together and to glue set parts
see Citadel Super Glue.

NOTE: We have cast this set using the most advanced techniques
and the best quality resin, but due to the nature of the casting process your
model may contain very slight air bubbles. These can easily be filled with
model filler or super glue. Any slight overage of this parts can easily be
corrected by sanding the part in hot tap water for about 1 minute then
carefully sanding it back into shape.

THIS IS NOT A TOY

Not suitable for children under 18 years of age.

WARNING: Resin dust can be harmful if inhaled. Always wear a dust
mask or respirator when sanding or sawing resin parts.



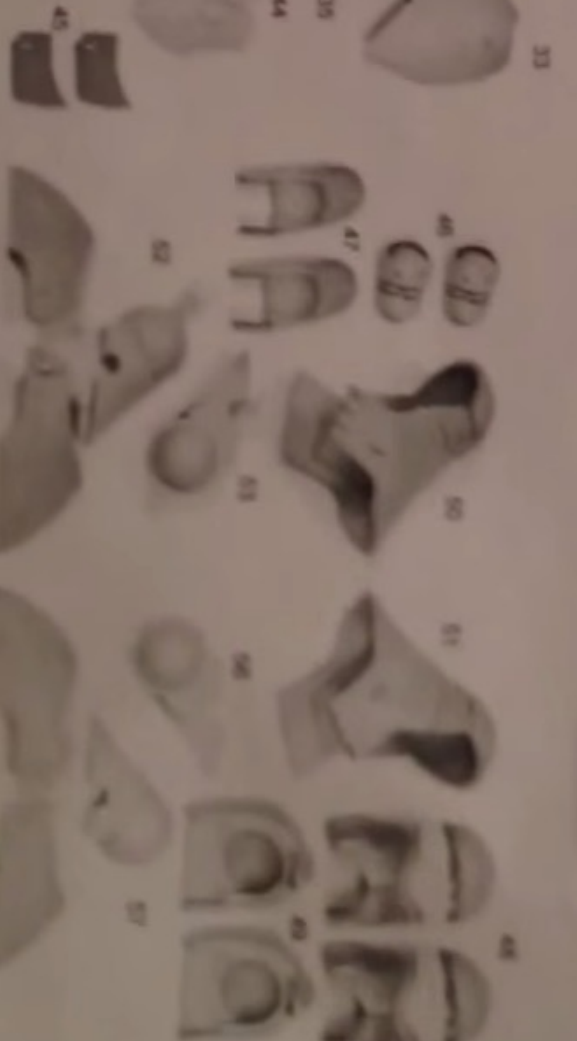
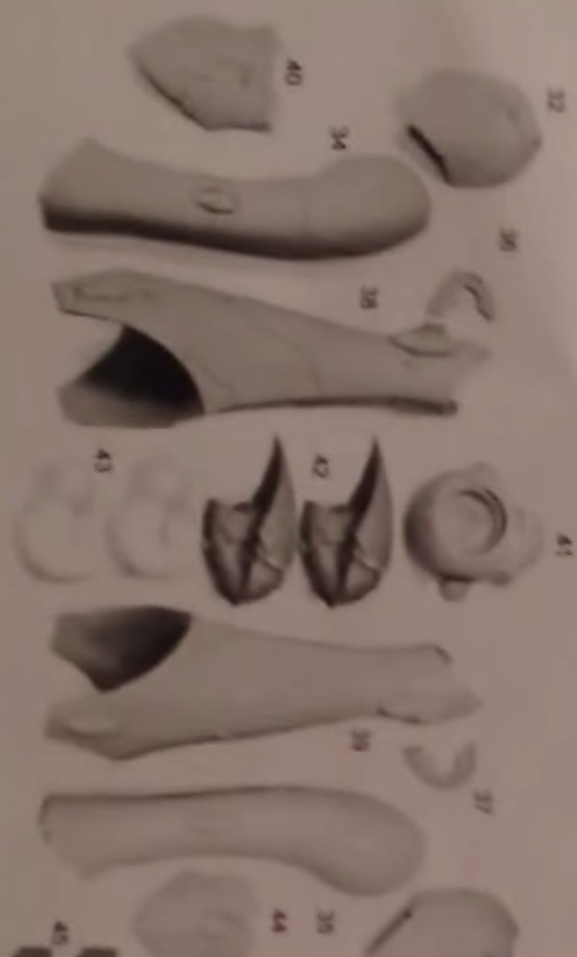
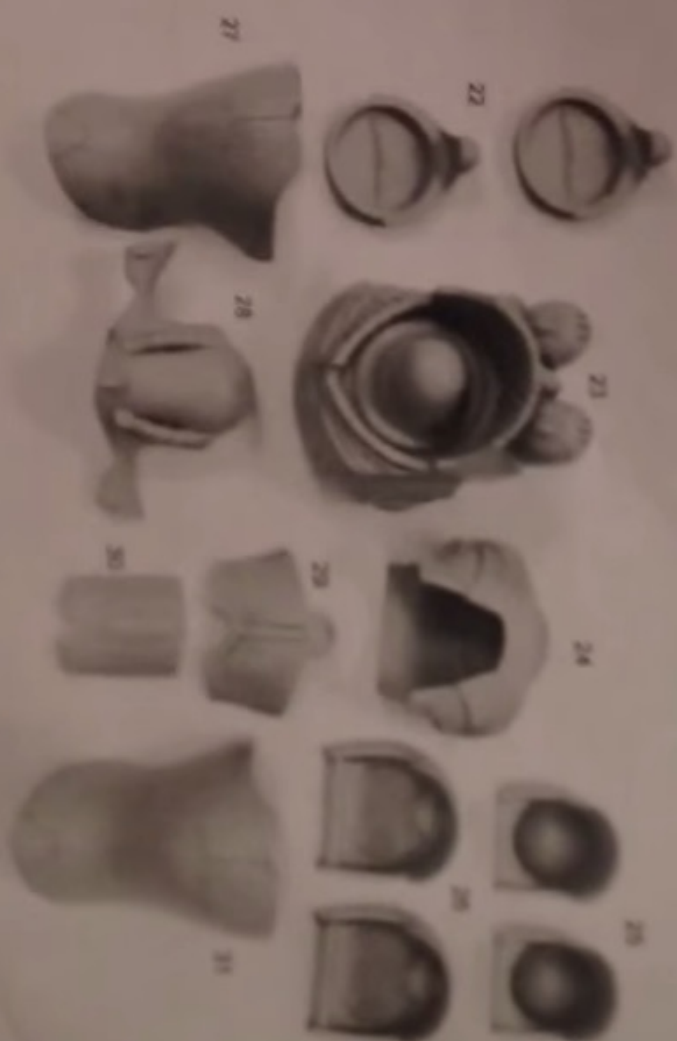
The copyrights on the model design and components belong
to the authors property of Games Workshop Ltd.
Copyright Games Workshop Ltd. 2011. All rights reserved.

Product code : 99590104047

Large World Games Workshop, Willow Road, Luton, Bedfordshire, MK17 9NU, UK. Tel: 01525 633211 Fax: 01525 633212

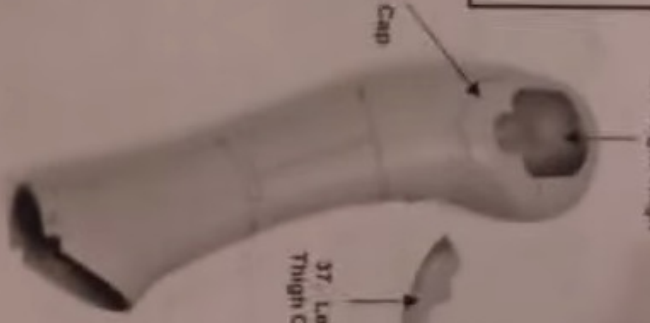
- 22 Shoulder Rings (x2)
 23 Upper Torso
 24 Lower Torso
 25 Inner Shoulder (x2)
 26 Outer Shoulder (x2)
 27 Left Shoulder Guard
 28 Abdomen
 29 Torso Plate
 30 Abdominal Pads
 31 Right Shoulder Guard
 32 Right Thigh Guard
 33 Left Thigh Guard
 34 Right Thigh
 35 Left Thigh
 36 Right Thigh Cap
 37 Left Thigh Cap
 38 Right Lower Leg
 39 Left Lower Leg
 40 Crotch Guard

- 41 Waist
 42 Knee (x2)
 43 Hip Joint (x2)
 44 Thigh Guard
 45 Leg Fins (x2)
 46 Heel Joints (x2)
 47 Inner Foot (x2)
 48 Heel Guard (x2)
 49 Heel (x2)
 50 Right Ankle Guard
 51 Left Ankle Guard
 52 Right Outer Toe Joint
 53 Right Inner Toe Joint
 54 Right Outer Toe
 55 Right Inner Toe
 56 Left Inner Toe Joint
 57 Left Outer Toe Joint
 58 Left Outer Toe
 59 Left Inner Toe



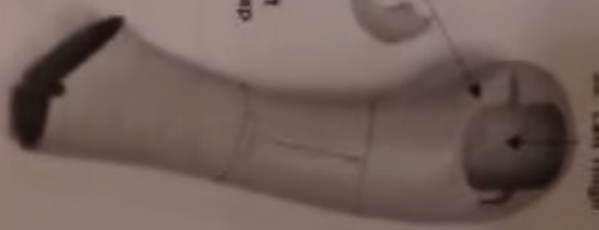
NOTE
 When constructing your Phantasm Taran it is worthwhile to have the pose you want the Taran to be in decided before you begin. We recommend starting construction with the legs and working up.

34 Right Thigh



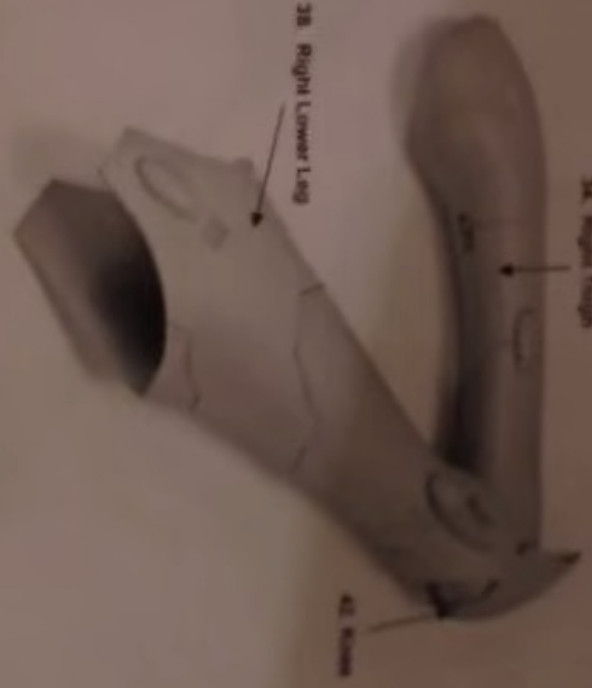
36 Right Thigh Cap

35 Left Thigh



37 Left Thigh Cap

34 Right Thigh



38 Right Lower Leg

42 Heel

56 Left Inner Toe Joint



Removed tags

57 Left Outer Toe Joint



56 Left Inner Toe Joint



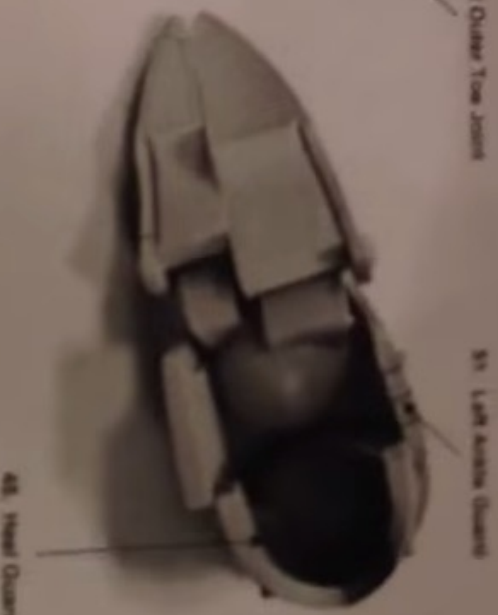
58 Left Inner Toe

57 Left Outer Toe Joint



58 Left Outer Toe

59 Left Ankle Guard



48 Heel Guard

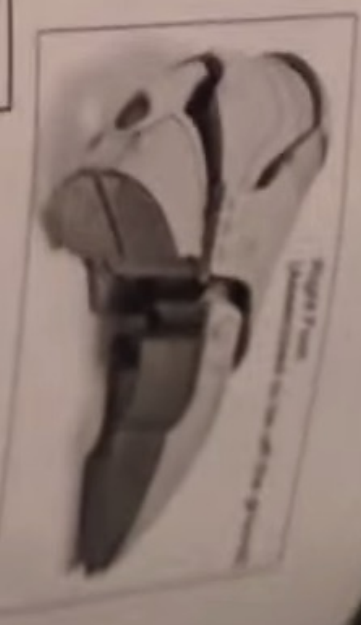
NOTE The tags on the underside of the Toe Joints act as stops to assemble a foot in a flat standing position as we are posing our Phantasm pushing off it's left foot in this example. The tags are removed to allow a greater degree of movement.
 The posing of the foot is crucial to the posing of the legs. Test fitting using sticky tack is advised.



46. Heel Joint



47. Inner Foot



48. Heel

NOTE
 The position of the Torso is determined by the angle of the waist. It may be adjusted to assemble the Torso before attaching the waist to the legs.



Right Leg Assembly

49. Hip Joint



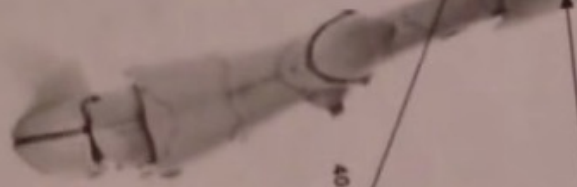
50. Waist

NOTE
 All this material is to be used in the assembly of the robot.

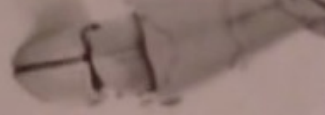
32. Right Thigh Guard



33. Left Thigh Guard



40. Crotch Guard



14. Right Large Holo Fin



15. Left Large Holo Fin



17. Right Small Holo Fin



18. Left Small Holo Fin



26. Lower Torso

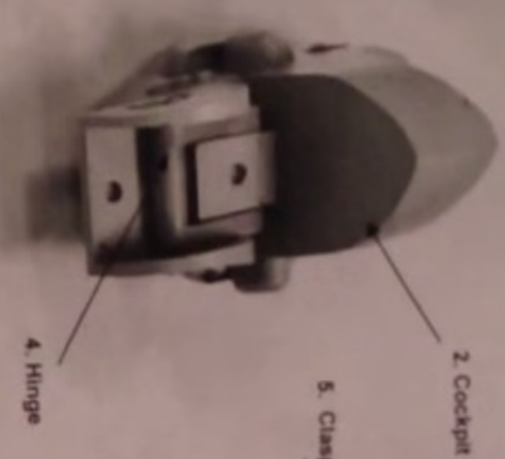


29. Torso Pylon



30. Abdominal Pylon





2. Cockpit



3. Dashboard



4. Hinge



5. Clasp

NOTE
When gluing the clasp be careful not to get any glue on the Hinge. The Hinge should pivot freely to allow access to the cockpit interior.

NOTE
Fix one pin into the Head hook it into the Hinge and then fix the second pin to the head ensuring it locates in the other side of the Hinge



6. Left Hinge Pin



Cockpit Assembly

7. Right Hinge Pin

Tassels
These are a great way to represent movement on the head. They can be bent in to shape by holding with tweezers and gently heating with a hairdryer. Once heated bend to the desired shape that matches the direction of motion that the model has been posed in.

Torso Assembly



Leg Assembly

26. Outer Guard



28. Outer Guard

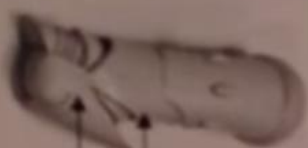
25. Inner Shoulder



28. Inner Shoulder

Arm Assembly
(Misspelled sold separately)

9. Left Hand



11. Left Upper Arm

13. Elbow

NOTE
The Inner Shoulder only glues to the Outer Shoulder along its lower edge, to add strength to this joint it can be worth placing a ball of greenstuff in the shoulder socket of the Upper Torso.



18. Right
Missile Pod



19. Left A.K. Missile Pod



27. Left Shoulder Guard



31. Right Shoulder Guard



40. Leg Fin

41. Leg Fin

NOTE
There is a choice of either a
Starcannon or a Pulse Laser

21. Pulse Laser

