

Free Downloads of Build Instructions,
Assembly Booklets & How To Guides

BuildInstructions.com

WARHAMMER
40,000

WARHAMMER
AGE OF SIGMAR

THE BLUE SCRIBES



READ THIS FIRST • À LIRE EN PREMIER • LEER ANTES DE MONTAR • LIES DIES ZUERST • LEGGI PRIMA QUESTO

- Before assembling your model kit please read through the instructions in this booklet carefully. A pair of plastic cutters is required to remove the resin components in this kit from their frame. We advise using a mouldline scraping tool to clean up the parts. To assemble your model you will need super glue. Games Workshop sells Citadel Fine Detail Cutters, Citadel Mouldline Remover and Citadel Super Glue, but does not recommend these products for use by children under the age of 16 without adult supervision.
- Veuillez lire attentivement les instructions de ce livret avant d'assembler votre figurine. Une paire de pinces coupantes est requise pour détacher les éléments en résine de leur grappe. Nous vous conseillons d'utiliser un ébarboir pour retirer les lignes de moulage. Vous aurez également besoin de super glue pour assembler votre figurine. Games Workshop commercialise des Pinces de Précision Citadel, un Ébarboir Citadel et de la Super Glue Citadel, mais n'en recommande pas l'utilisation aux enfants de moins de 16 ans sans la supervision d'un adulte.
- Antes de montar tu miniatura lee atentamente las instrucciones de este folleto. Se necesitan un par de tenazas para plástico para retirar los componentes de resina de la matriz. Te aconsejamos que uses una herramienta para rebabas para limpiar cualquier resto. Necesitarás súper glue para montar tu miniatura. Games Workshop vende Tenazas de detalle Citadel, Herramientas para rebabas Citadel y Súper glue Citadel, pero no recomendamos el uso de esos productos a menores de 16 años sin supervisión de un adulto.
- Bitte lies diese Anleitung sorgfältig, bevor du mit dem Zusammenbau deines Modells beginnst. Du benötigst einen Kunststoffseitenschneider, um die Resinbauteile aus dem Gussrahmen herauszutrennen. Außerdem empfehlen wir, die Bauteile mit einem Gussgratentferner zu säubern. Zum Zusammenbau deines Modells benötigst du Sekundenkleber. Games Workshop bietet Präzisions-Kunststoffseitenschneider von Citadel sowie Citadel-Gussgratentferner und Citadel-Sekundenkleber an, empfiehlt aber, dass Kinder unter 16 Jahren diese nur unter Aufsicht eines Erwachsenen benutzen.
- Prima di assemblare il tuo kit, leggi con attenzione le istruzioni contenute in questo libretto. Hai bisogno di un paio di tronchesine per rimuovere i componenti di resina dallo sprue. Sugeriamo l'utilizzo di un attrezzo per ripulire. Per assemblare il modello dovrai usare la colla cianoacrilica. Games Workshop vende Tronchesine di precisione Citadel. Attrezzo per ripulire Citadel e Colla cianoacrilica Citadel, ma non ne consiglia l'utilizzo da parte di bambini sotto i 16 anni senza la supervisione di un adulto.

CITADEL

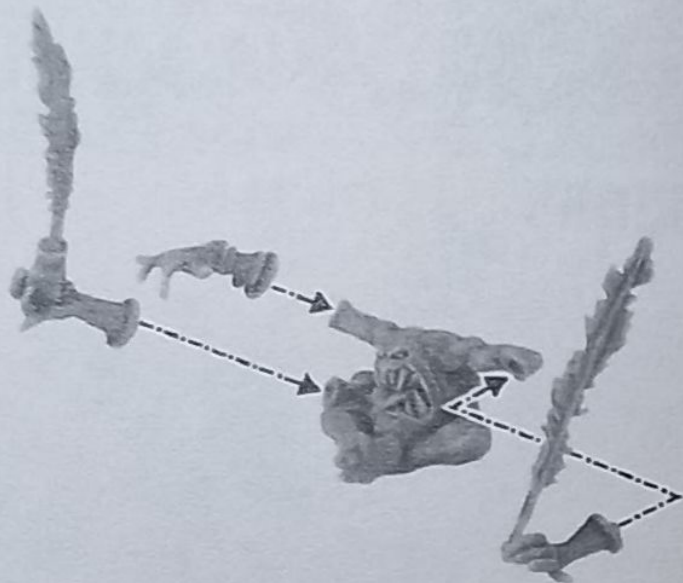
© Copyright 2017, Games Workshop Ltd. All rights reserved.



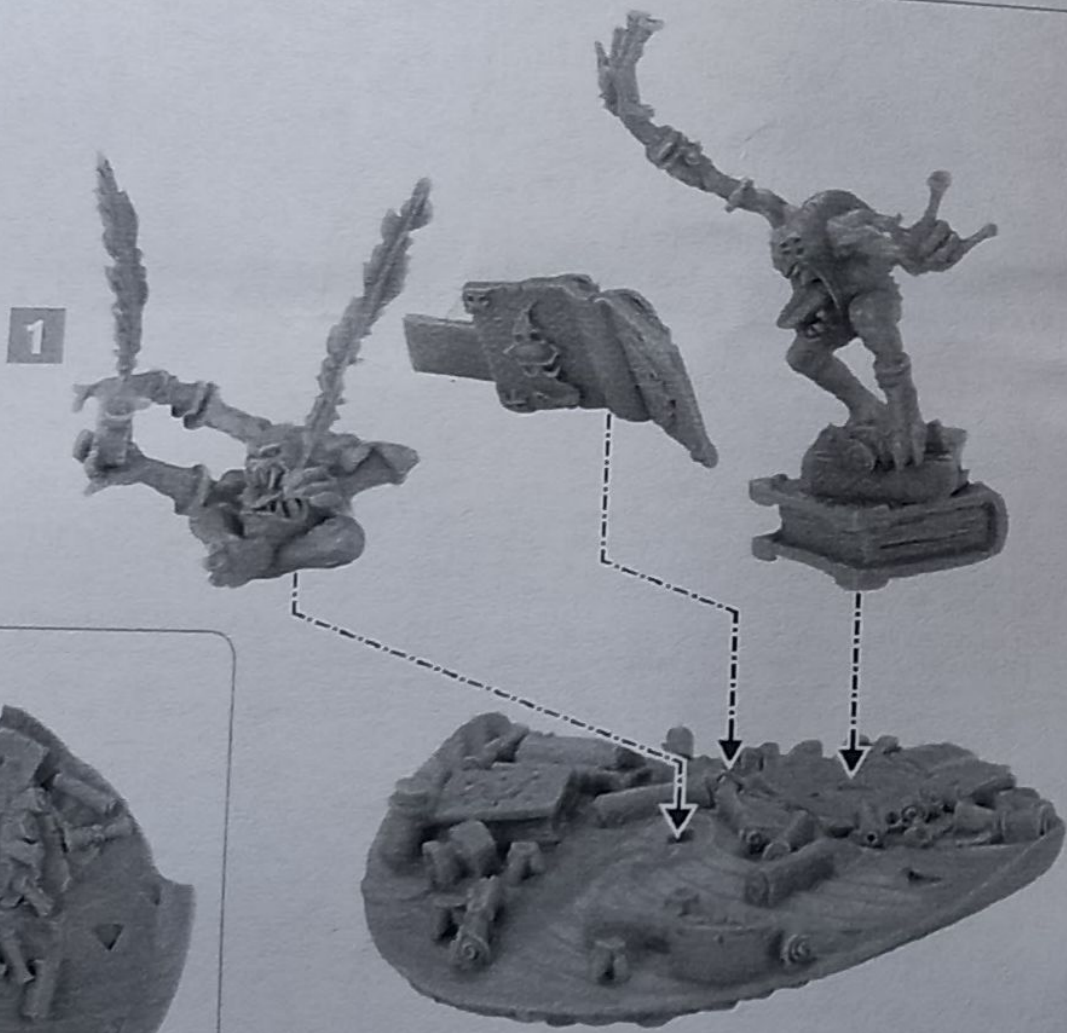
993199150178

R04

1



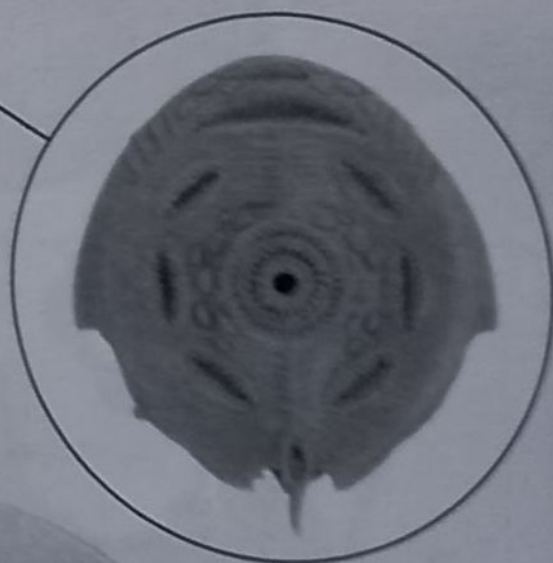
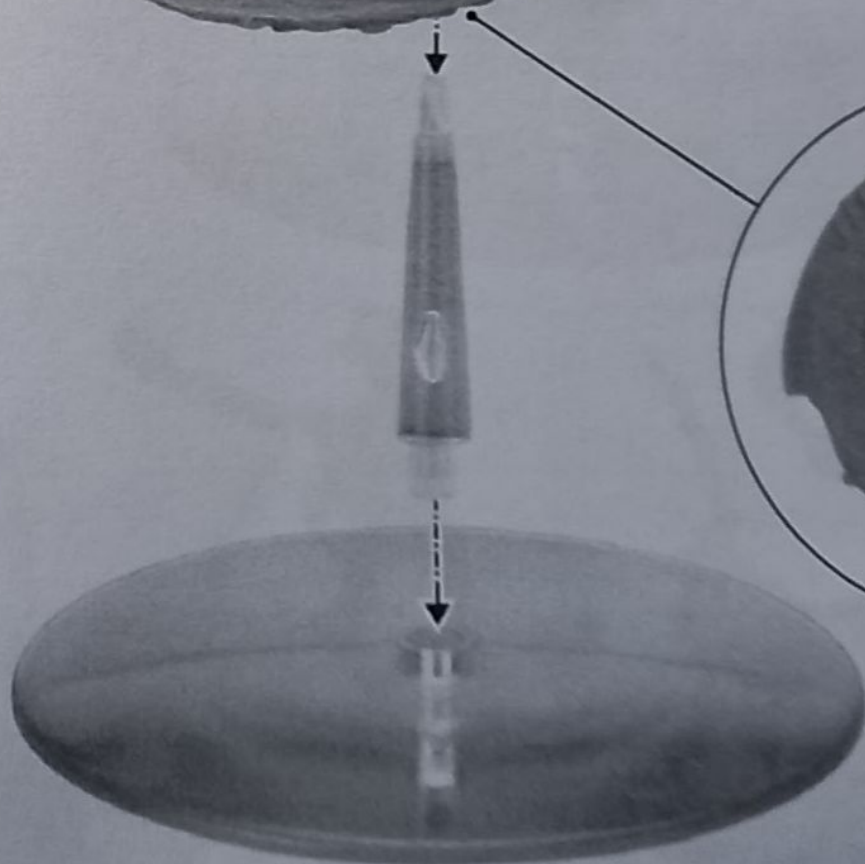
2

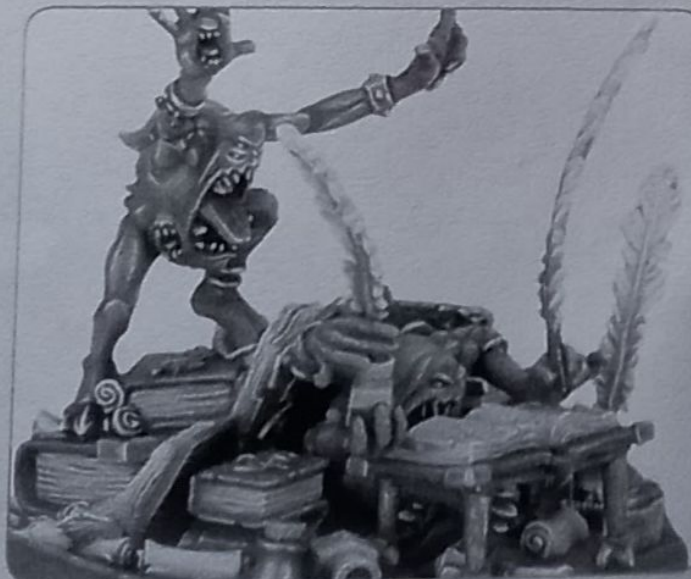


3

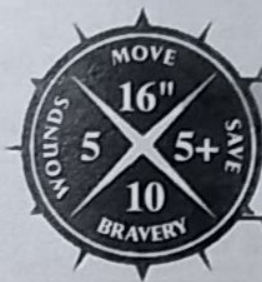


1





THE BLUE SCRIBES



MELEE WEAPONS	Range	Attacks	To Hit	To Wound	Rend	Damage
Sharpened Quills	1"	2	5+	5+	-	1
Disc's Many-fanged Mouths	1"	D3	4+	4+	-	1

DESCRIPTION

The Blue Scribes are a single model. One of the Scribes, P'tarix, transcribes pages of magical sigils, halting only to stab at approaching enemies with his Sharpened Quills, while Xirat'p reads his twin's scrawl, casting spells hither and yon. They ride a Disc of Tzeentch which attacks with its Many-fanged Mouths.

FLY

The Blue Scribes can fly.

ABILITIES

Frantic Scribbling: Roll a dice each time a **WIZARD** within 18" of the Blue Scribes successfully casts a spell (whether or not it is unbound); on a 4 or more the Scribes learn that spell and can attempt to cast it in subsequent turns.

Scrolls of Sorcery: Once in each of your hero phases, the Blue Scribes can read from their Scrolls of Sorcery instead of making a casting attempt. If they do, roll a dice; on a 1, they can't decipher the scrawls and the casting attempt automatically fails, but on a 2 or more, that spell is successfully cast and can only be unbound on a roll of 9 or more.

MAGIC

The Blue Scribes can attempt to cast one spell in each of your own hero phases, and attempt to unbind one spell in each enemy hero phase. They know the Arcane Bolt, Mystic Shield and Boon of Tzeentch spells.

BOON OF TZEENTCH

The Blue Scribes reach forth, tapping into an unseen hoard of arcane power. Boon of Tzeentch has a casting value of 4. If successfully cast, you can re-roll failed casting rolls made for **TZEENTCH WIZARDS** within 18" of the Blue Scribes for the rest of the hero phase.

KEYWORDS

CHAOS, DAEMON, HORROR, TZEENTCH, HERO, WIZARD, THE BLUE SCRIBES