



Free Downloads of Build Instructions,
Assembly Booklets & How To Guides

[BuildInstructions.com](https://www.buildinstructions.com)

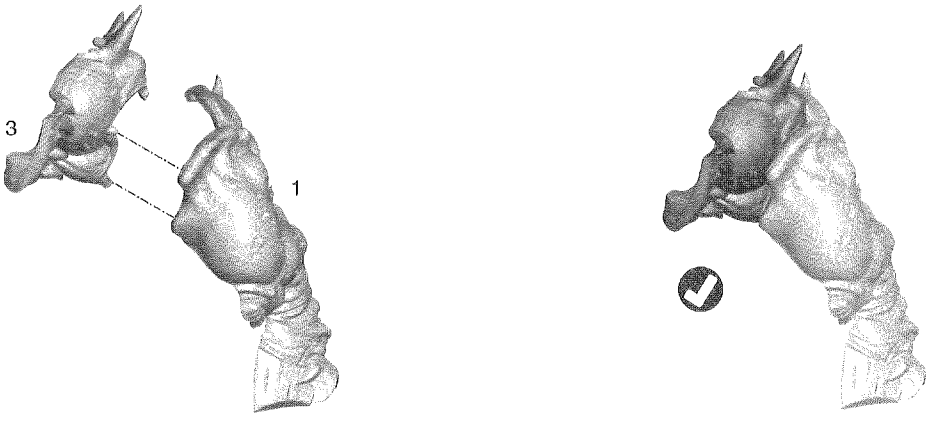


Follow steps 1-13 to build the main body which is used for both variants.
 Suivre les étapes 1 à 13 pour assembler le châssis, qui sera utilisé pour les deux variantes.
 Sigue los pasos 1-13 para montar el cuerpo principal que se usa para montar ambas variantes.

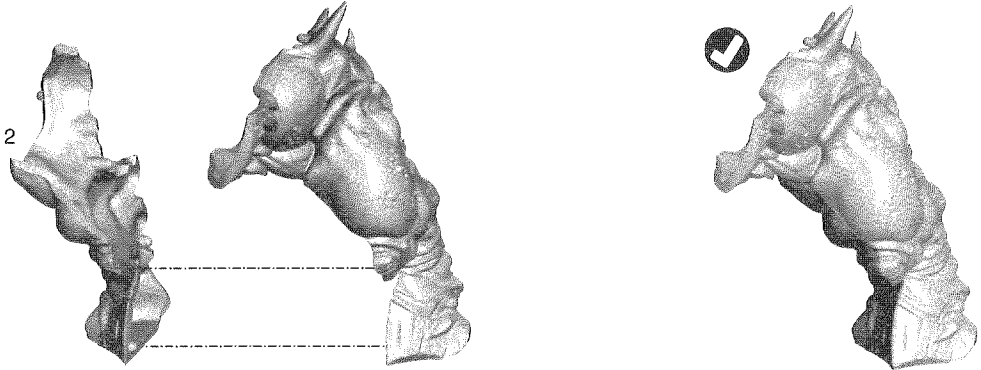
Folge Schritten 1-13, um den Haupttrumpf für beide Varianten zu bauen.
 Segui i passi 1-13 per assemblare il corpo principale, impiegato per entrambe le varianti.
 ステップ1~13に従って、体の主要部を組み立てる(両バージョン共通)。

1 LEFT REAR LEG ASSEMBLY • ASSEMBLAGE DE LA PATTE ARRIÈRE GAUCHE • MONTAGE DE LA PATA TRASERA IZQUIERDA
 ZUSAMMENBAU DES LINKEN HINTERBEINS • ASSEMBLAGGIO DELLA ZAMPA POSTERIORE SINISTRA • 左後脚の組み立て

A

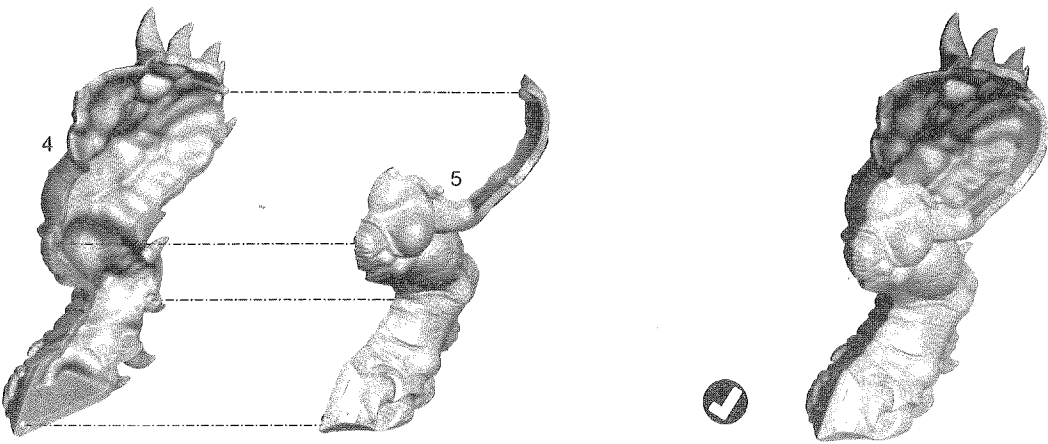


B

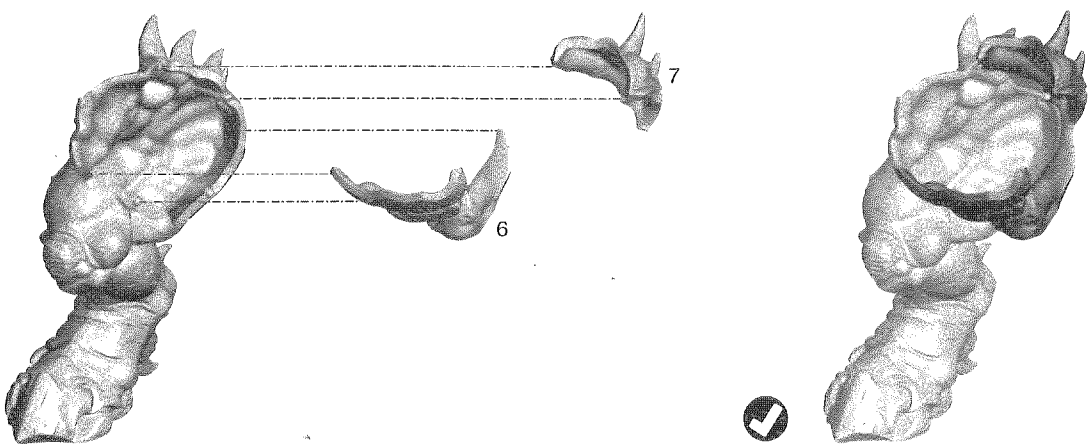


2 RIGHT REAR LEG ASSEMBLY • ASSEMBLAGE DE LA PATTE ARRIÈRE DROITE • MONTAGE DE LA PATA TRASERA DERECHA
 ZUSAMMENBAU DES RECHTEN HINTERBEINS • ASSEMBLAGGIO DELLA ZAMPA POSTERIORE DESTRA • 右後脚の組み立て

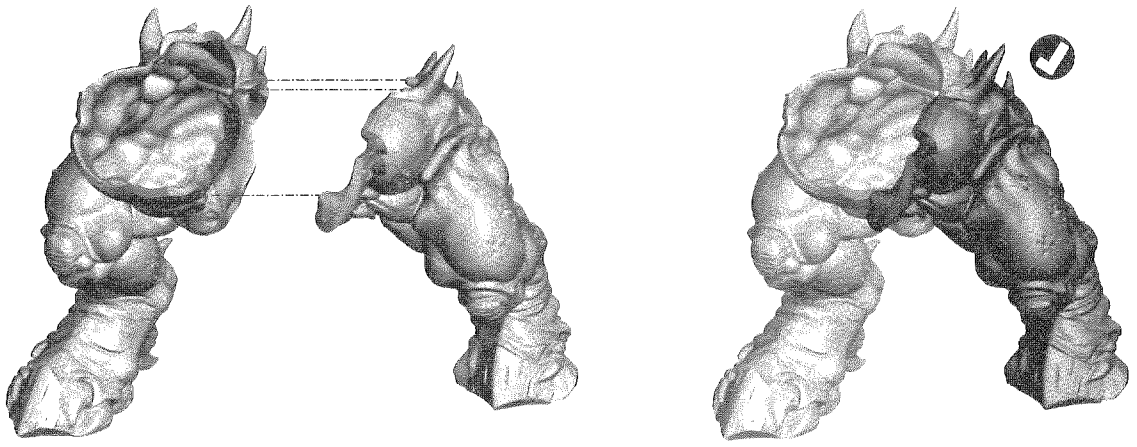
A



B



3 REAR LEGS ASSEMBLY • ASSEMBLAGE DES PATTES ARRIÈRE • MONTAJE DE LAS PATAS TRASERAS
 ZUSAMMENBAU DER HINTERBEINE • ASSEMBLAGGIO DELLE ZAMPE POSTERIORI • 後脚の組み立て

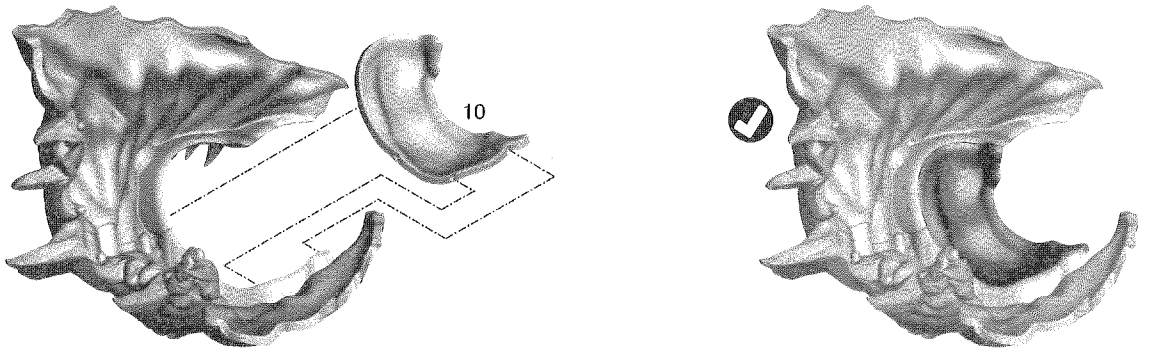


4 BODY ASSEMBLY • ASSEMBLAGE DU CORPS • MONTAJE DEL CUERPO
 ZUSAMMENBAU DES KÖRPERS • ASSEMBLAGGIO DEL CORPO • 体の組み立て

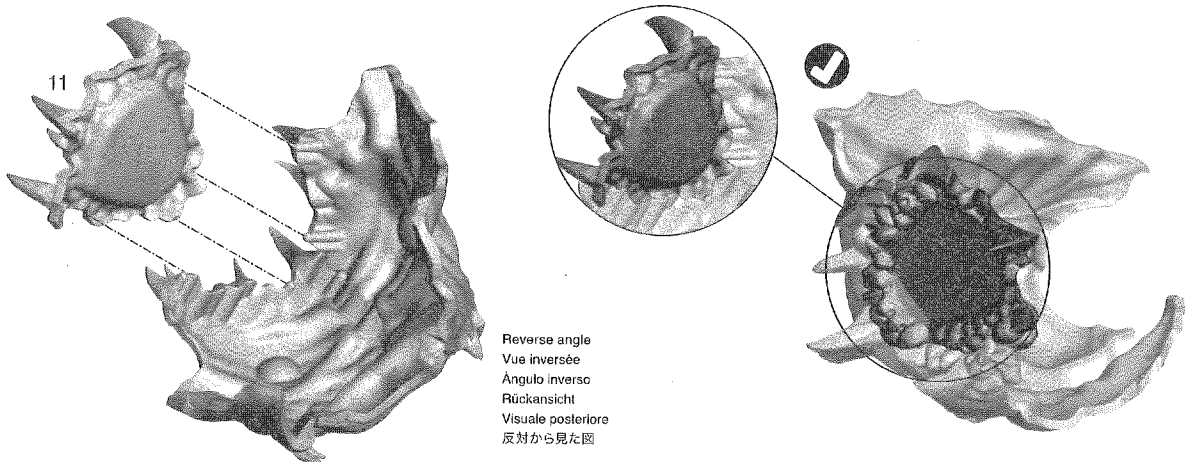
A



B

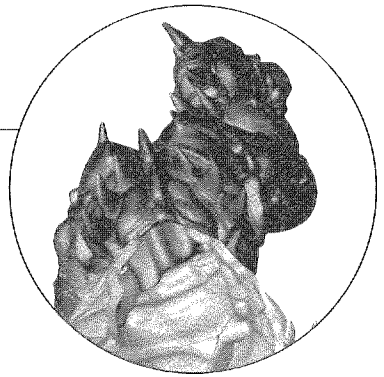
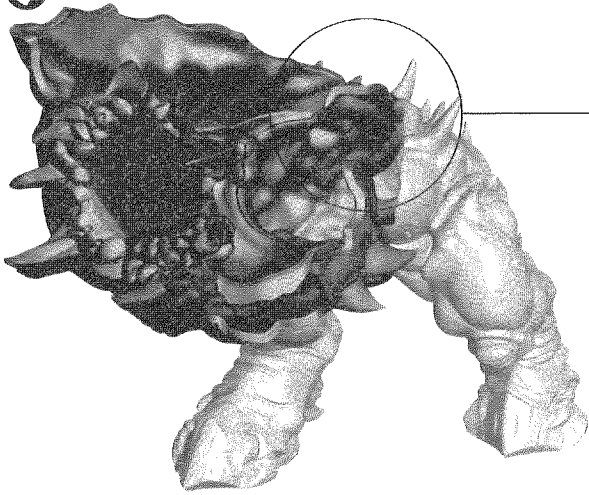
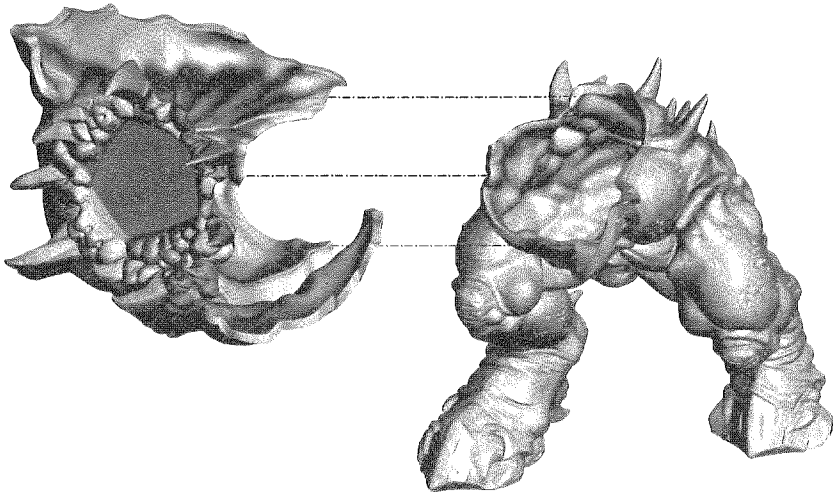


C



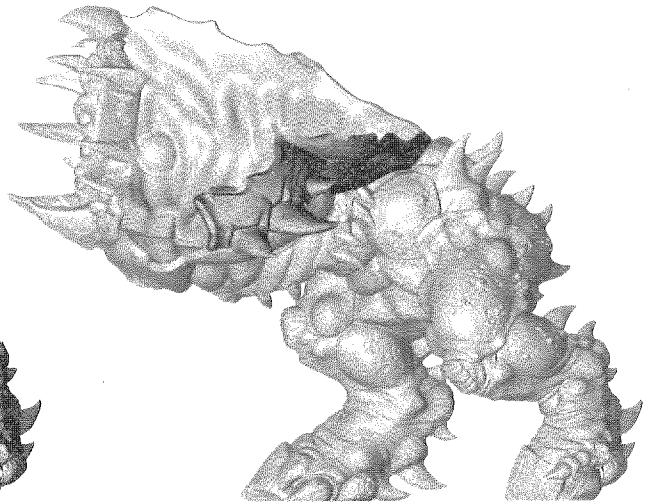
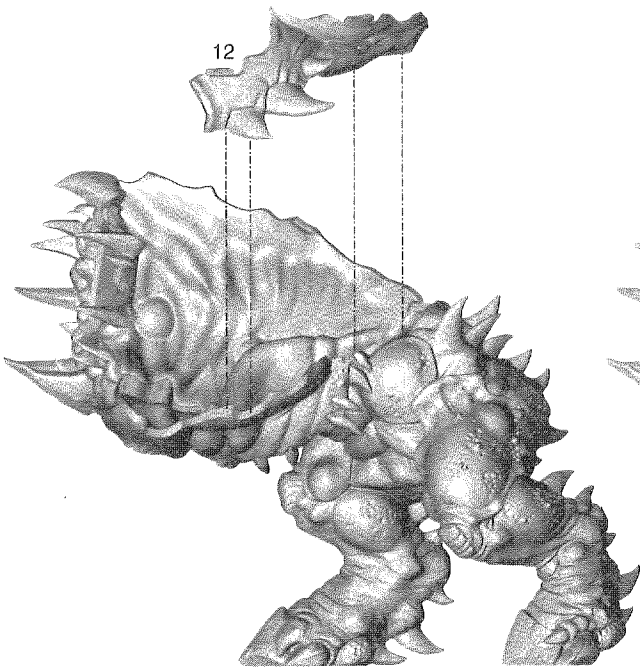
Reverse angle
 Vue inversée
 Ángulo inverso
 Rückansicht
 Visuale posteriore
 反対から見た図

A



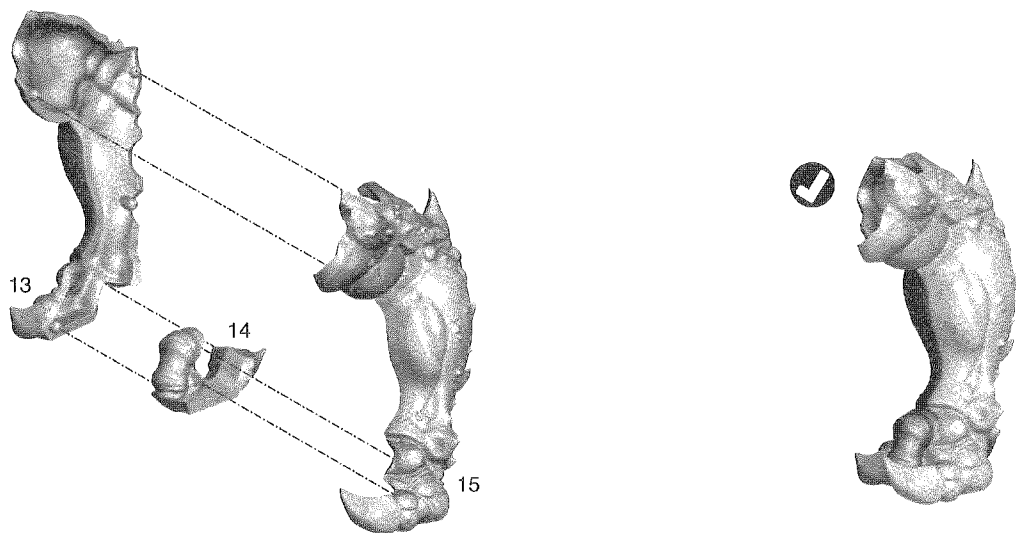
Top view
Vue supérieure
Visión superior
Draufsicht
Visuale dall'alto
上から見た図

B



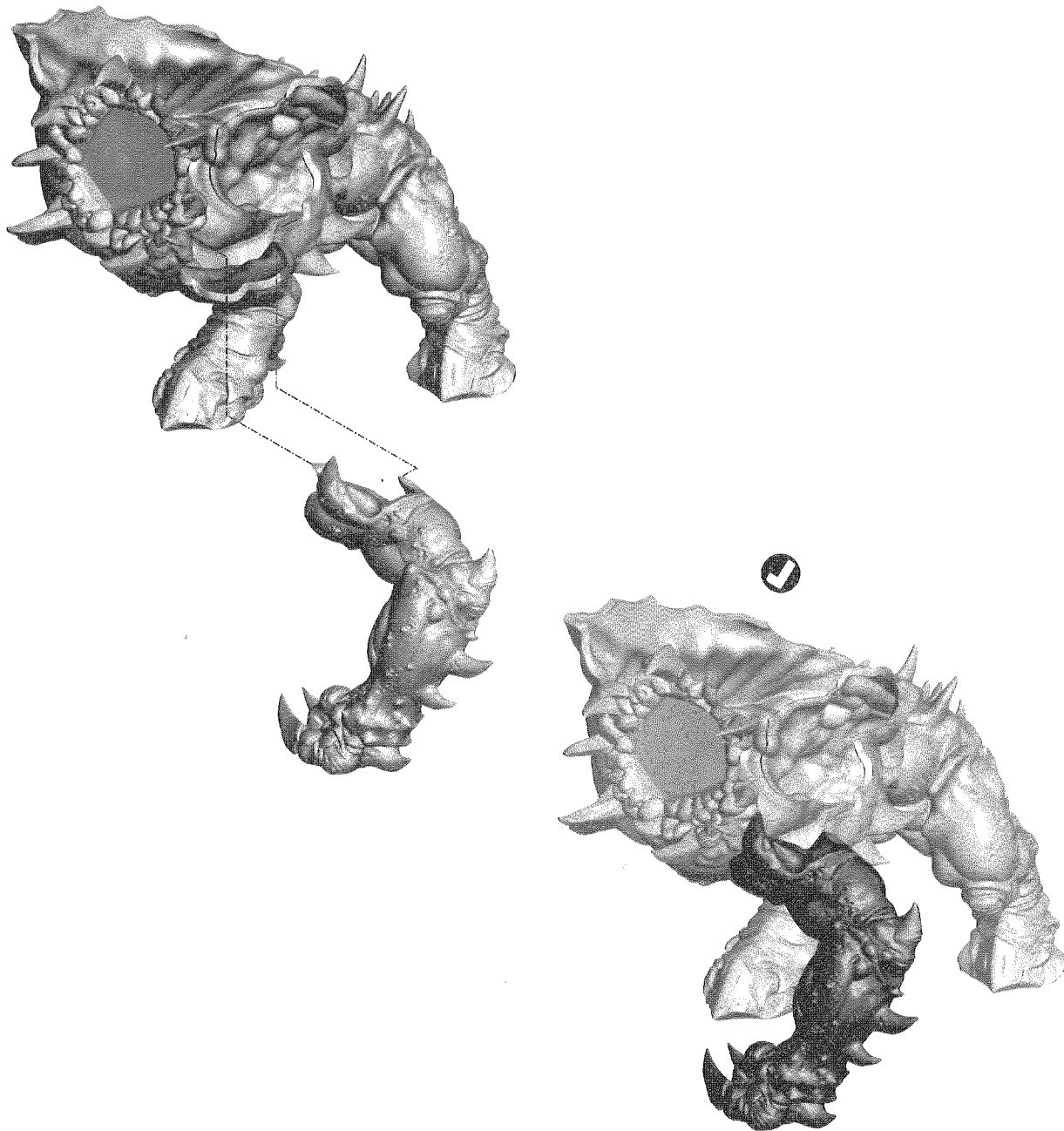
6

LEFT ARM ASSEMBLY • ASSEMBLAGE DE LA PATTE AVANT GAUCHE • MONTAJE DEL BRAZO IZQUIERDO
ZUSAMMENBAU DES LINKEN ARMS • ASSEMBLAGGIO DEL BRACCIO SINISTRO • 左腕の組み立て



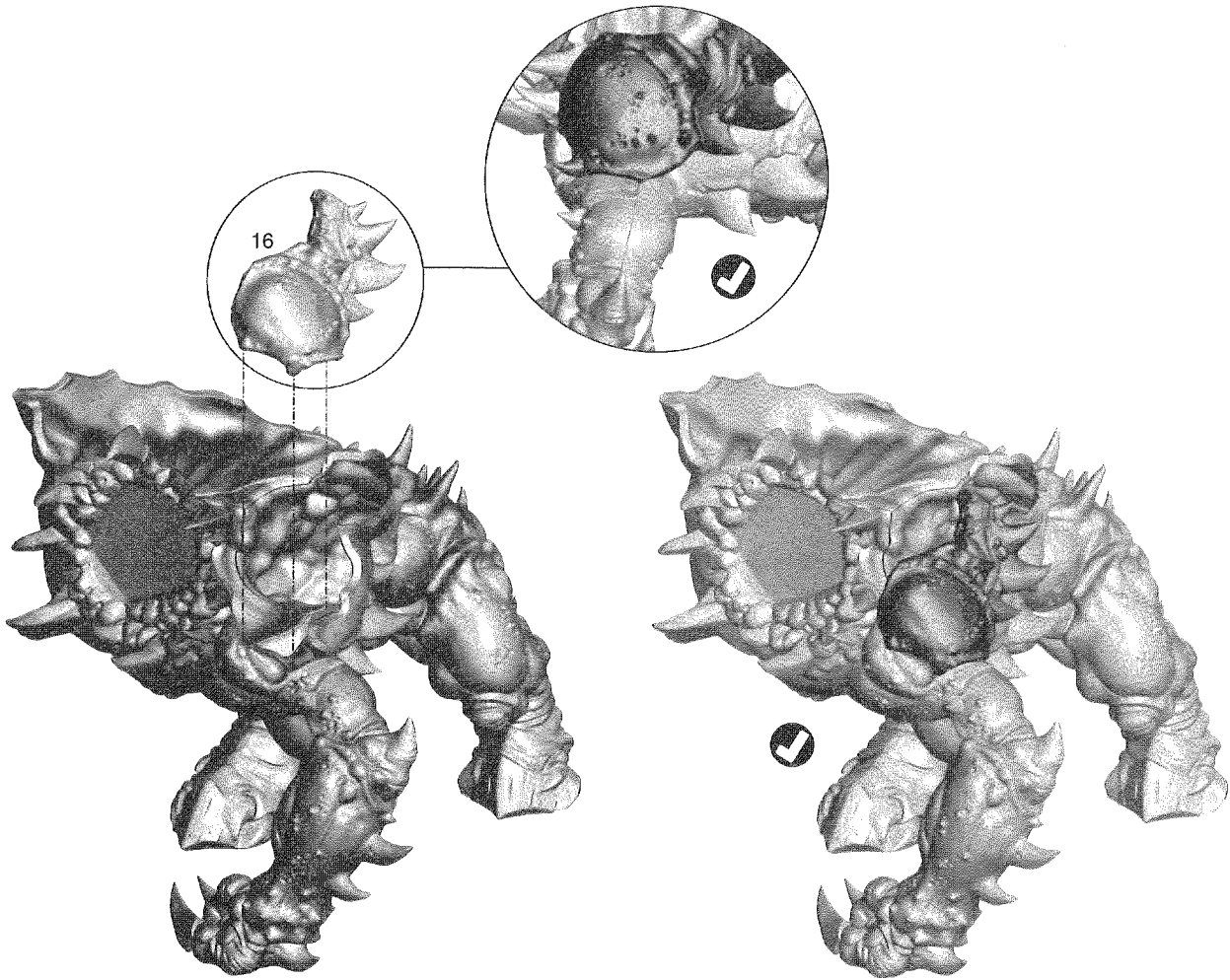
7

LEFT ARM TO BODY ASSEMBLY • ASSEMBLAGE DE LA PATTE AVANT GAUCHE AU CORPS • MONTAJE DEL BRAZO AL CUERPO
ZUSAMMENBAU VON LINKEN ARM UND KÖRPER • ASSEMBLAGGIO DEL BRACCIO SINISTRO AL CORPO • 左腕と体の組み立て

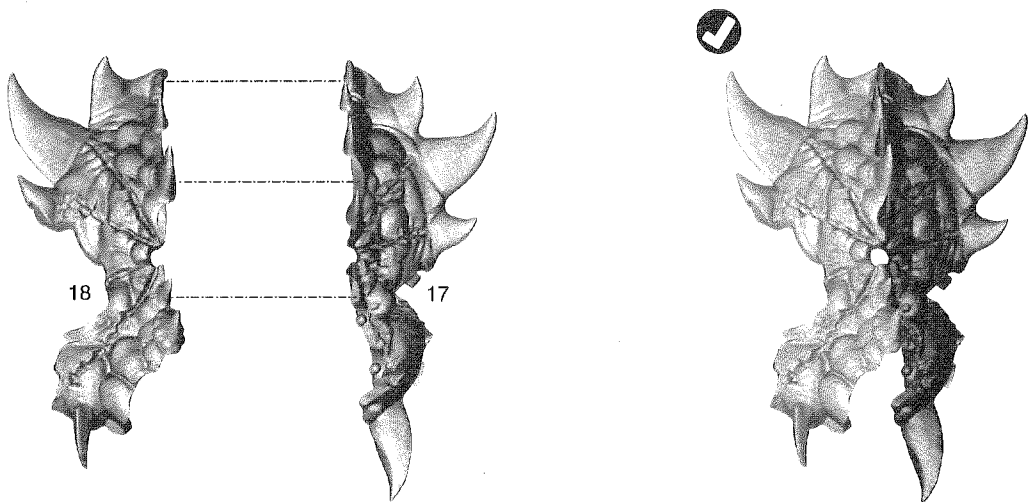


8

LEFT SHOULDER PLATE ASSEMBLY • ASSEMBLAGE DE L'ÉPAULE GAUCHE • MONTAJE DE LA PLACA DEL HOMBRO IZQUIERDO
 ZUSAMMENBAU DER LINKEN SCHULTERPLATTE • ASSEMBLAGGIO DELLA SPALLA SINISTRA • 肩鎧(左)の組み立て

**9**

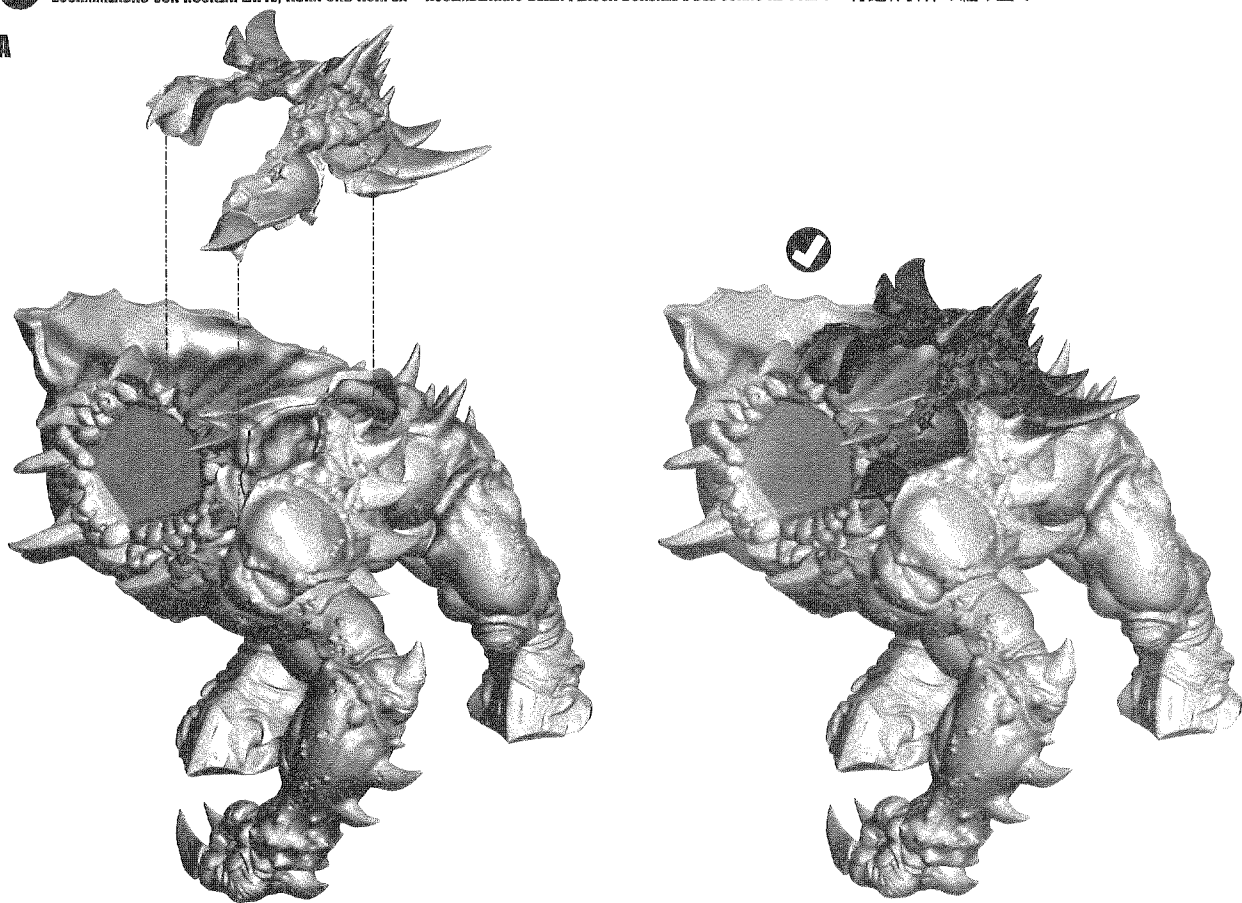
BACK PLATE ASSEMBLY • ASSEMBLAGE DE L'ÉCHINE • MONTAJE DE LA PLACA TRASERA
 ZUSAMMENBAU DER RÜCKENPLATTE • ASSEMBLAGGIO DELLA PLACCA DORSALE • 背鎧の組み立て



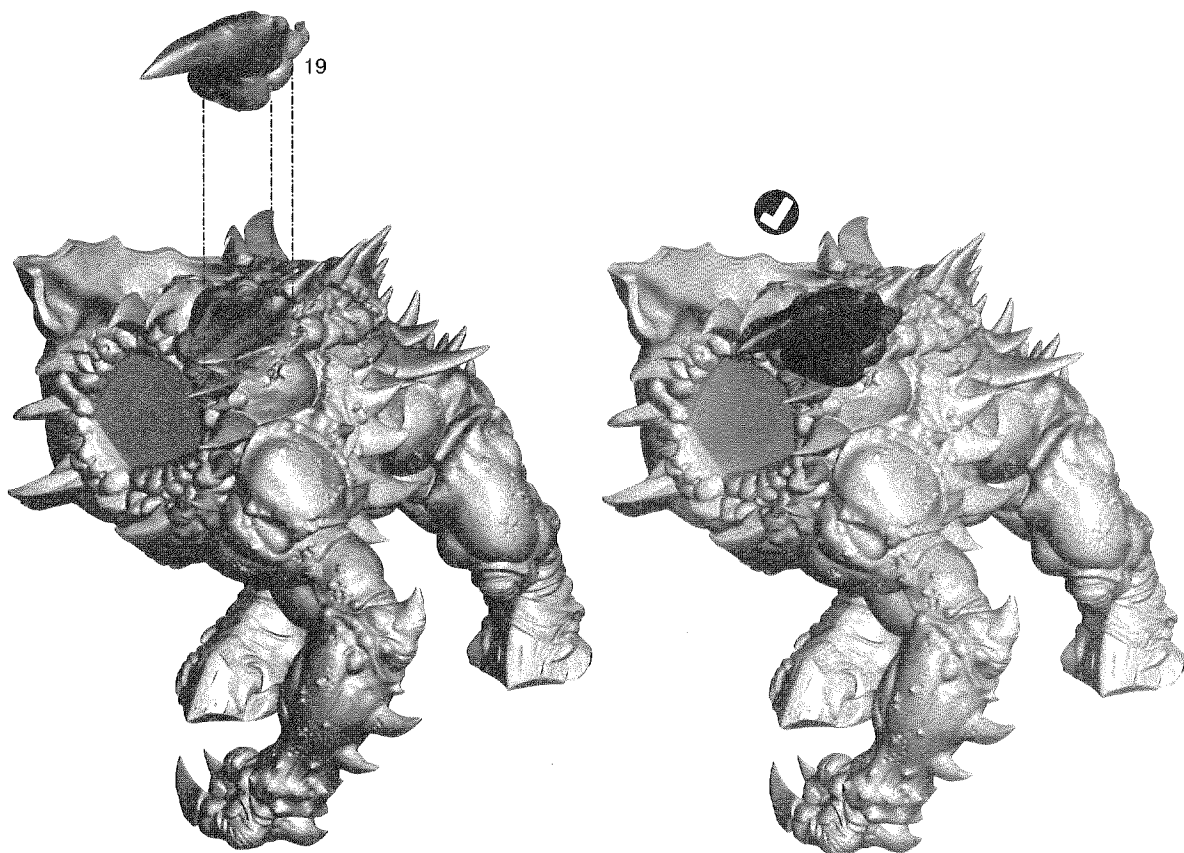
10

BACK PLATE & HORN TO BODY ASSEMBLY • ASSEMBLAGE DE L'ÉCHINE ET DE LA CORNE AU CORPS • MONTAJE DE LA PLACA TRASERA Y EL CUERNO
ZUSAMMENBAU VON RÜCKENPLATTE, HORN UND KÖRPER • ASSEMBLAGGIO DELLA PLACCA DORSALE E DEL CORNO AL CORPO • 背鎧、角、体の組み立て

A

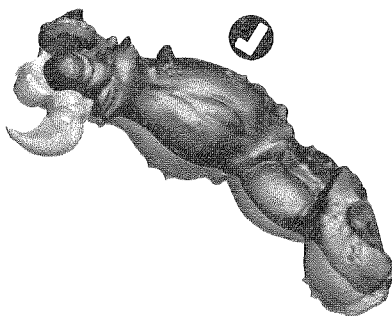
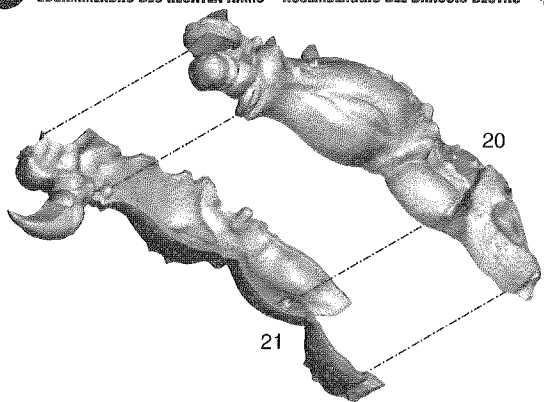
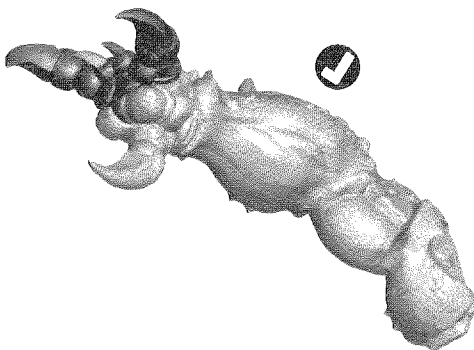
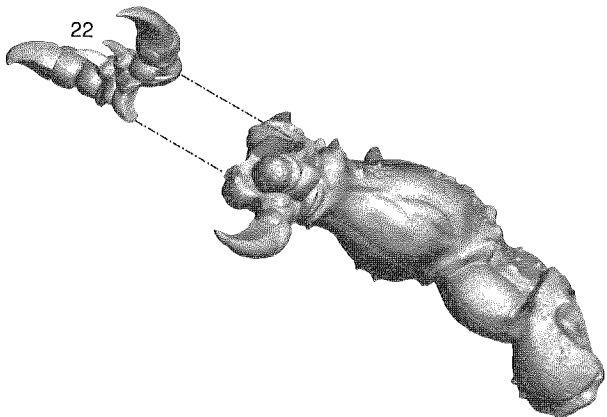


B

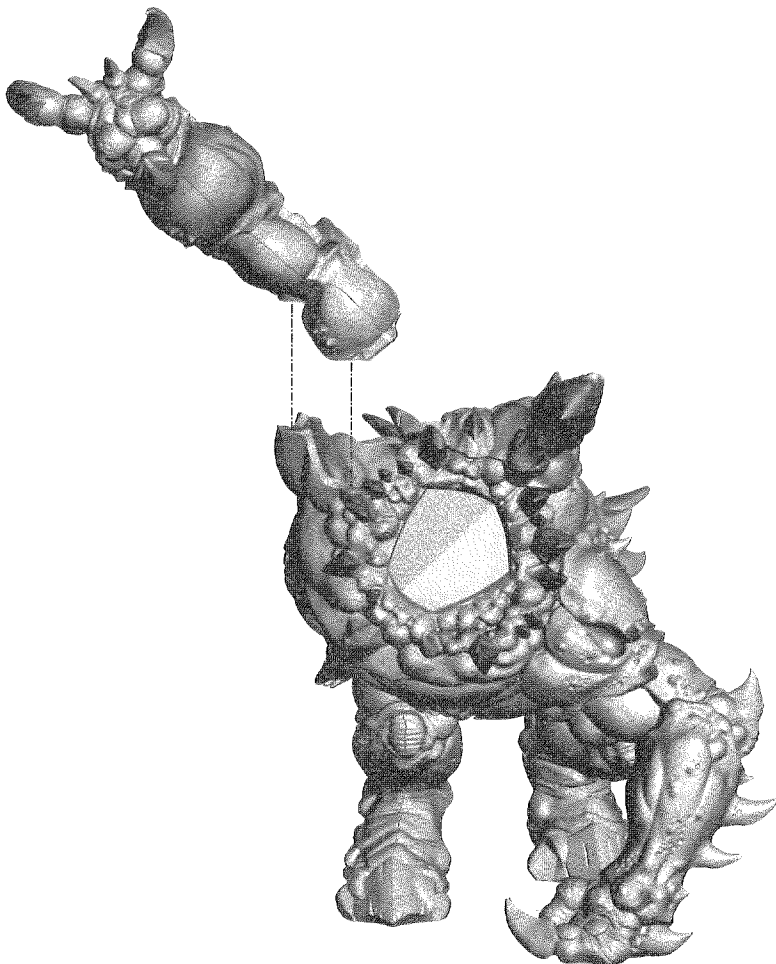


11

RIGHT ARM ASSEMBLY • ASSEMBLAGE DE LA PATTE AVANT DROITE • MONTAJE DEL BRAZO DERECHO
 ZUSAMMENBAU DES RECHTEN ARMS • ASSEMBLAGGIO DEL BRACCIO DESTRO • 右腕の組み立て

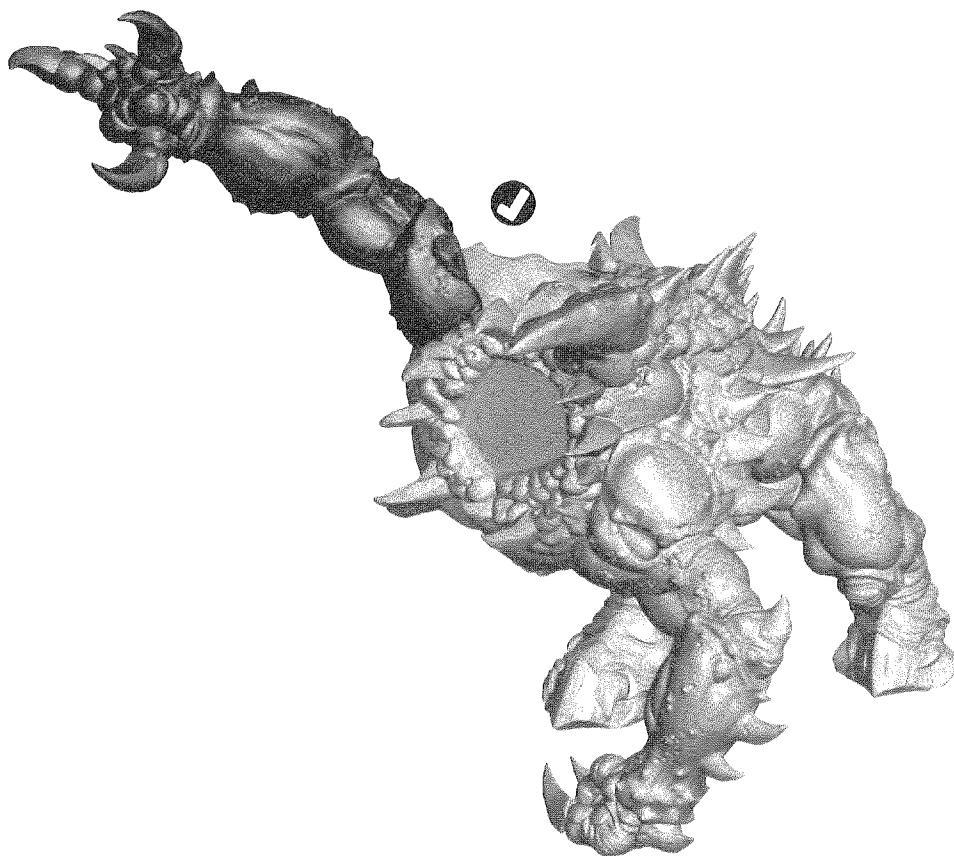
A**B****12**

RIGHT ARM TO BODY ASSEMBLY • ASSEMBLAGE DE LA PATTE AVANT DROITE AU CORPS • MONTAJE DEL BRAZO DERECHO AL CUERPO
 ZUSAMMENBAU VON RECHTEM ARM UND KÖRPER • ASSEMBLAGGIO DEL BRACCIO DESTRO AL CORPO • 右腕と体の組み立て



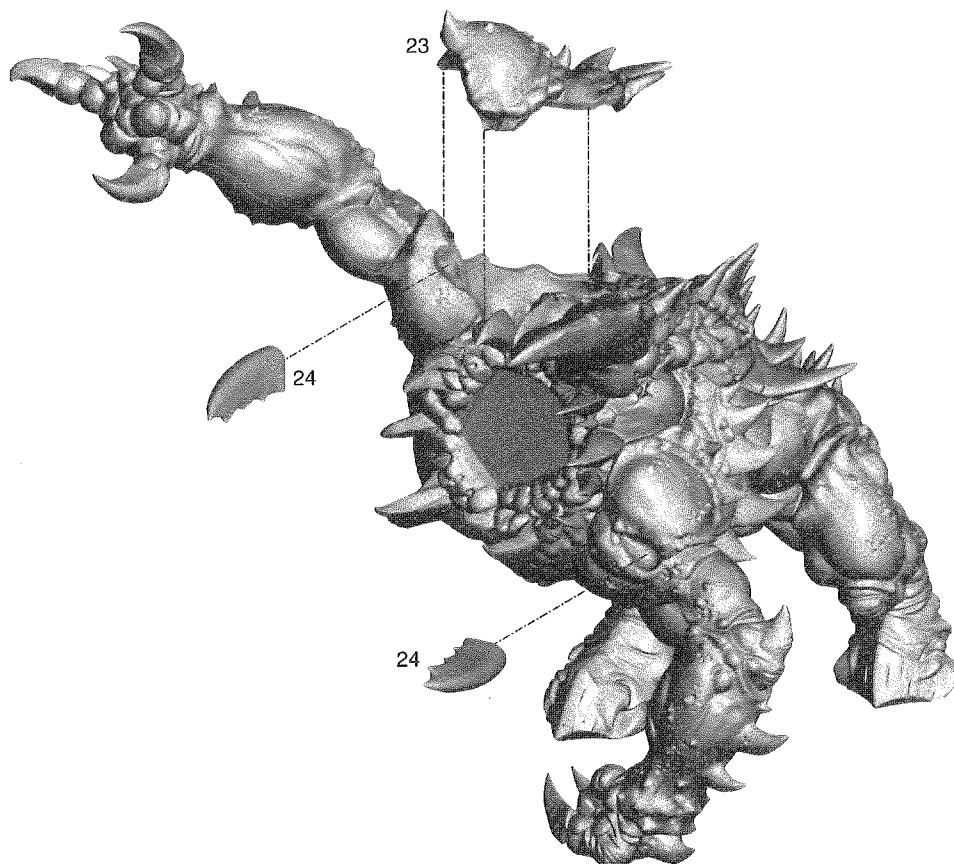
12

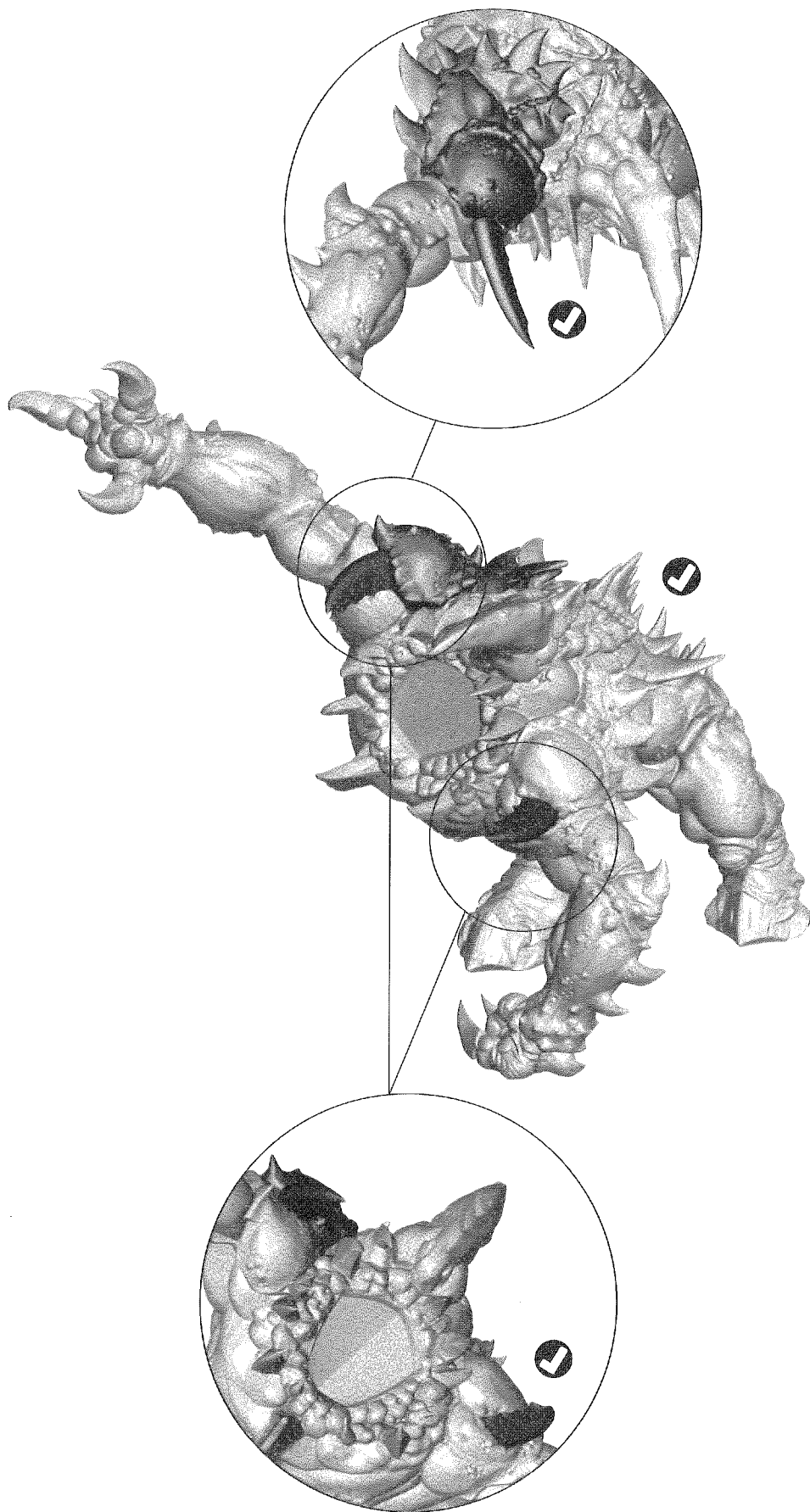
RIGHT ARM TO BODY ASSEMBLY Cont'd • ASSEMBLAGE DE LA PATTE AVANT DROITE AU CORPS suite • MONTAJE DEL BRAZO DERECHO AL CUERPO (Cont.)
 ZUSAMMENBAU VON RECHTEM ARM UND KÖRPER, Forts. • ASSEMBLAGGIO DEL BRACCIO DESTRO AL CORPO (segue) • 右腕と体の組み立て (続き)



13

FINAL TORSO ASSEMBLY • ASSEMBLAGE DE L'ÉPAULE DROITE • MONTAJE FINAL DEL TORSO
 ABSCHLIESSENDE ZUSAMMENBAU DES TORSOS • ASSEMBLAGGIO FINALE DEL TORSO • 胴体の最終組み立て

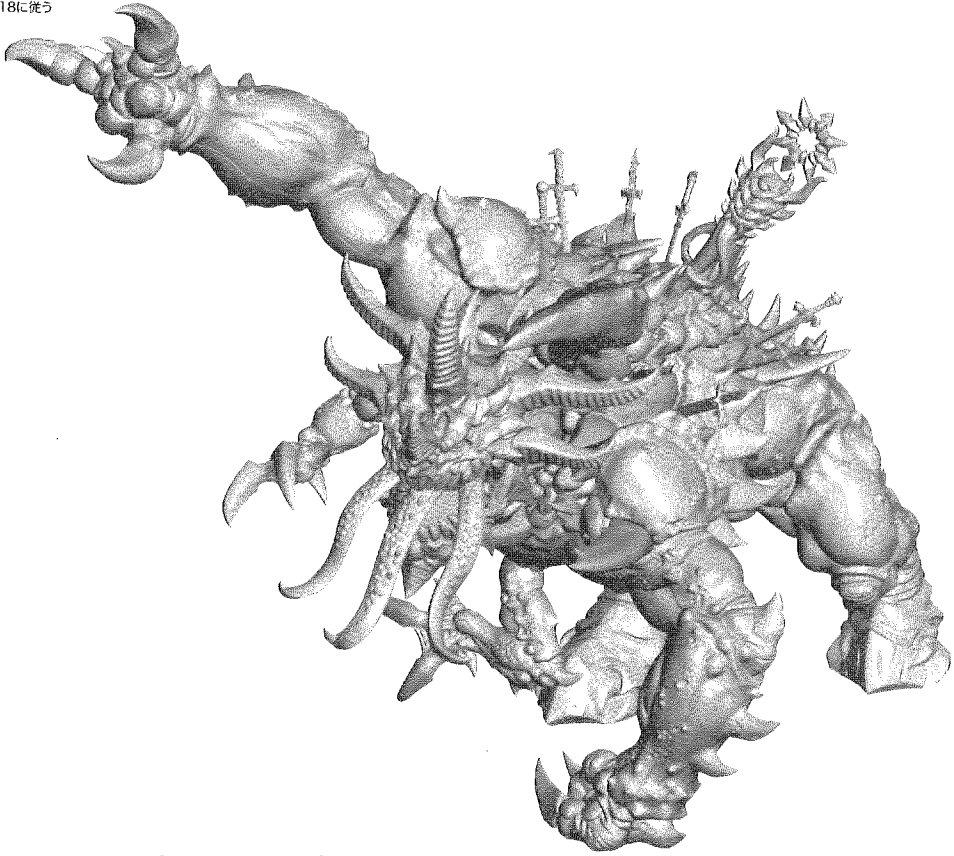




CHOOSE THE VARIANT YOU WANT TO BUILD • CHOISISSEZ LA VARIANTE À ASSEMBLER • ELIGE EL MODELO QUE VAYAS A MONTAR
WÄHLE DIE VARIANTE, DIE DU BAUEN MÖCHTEST • SCEGLI LA VARIANTE CHE VUOI ASSEMBLARE • 組み立てたい方のミニチュアを選択する

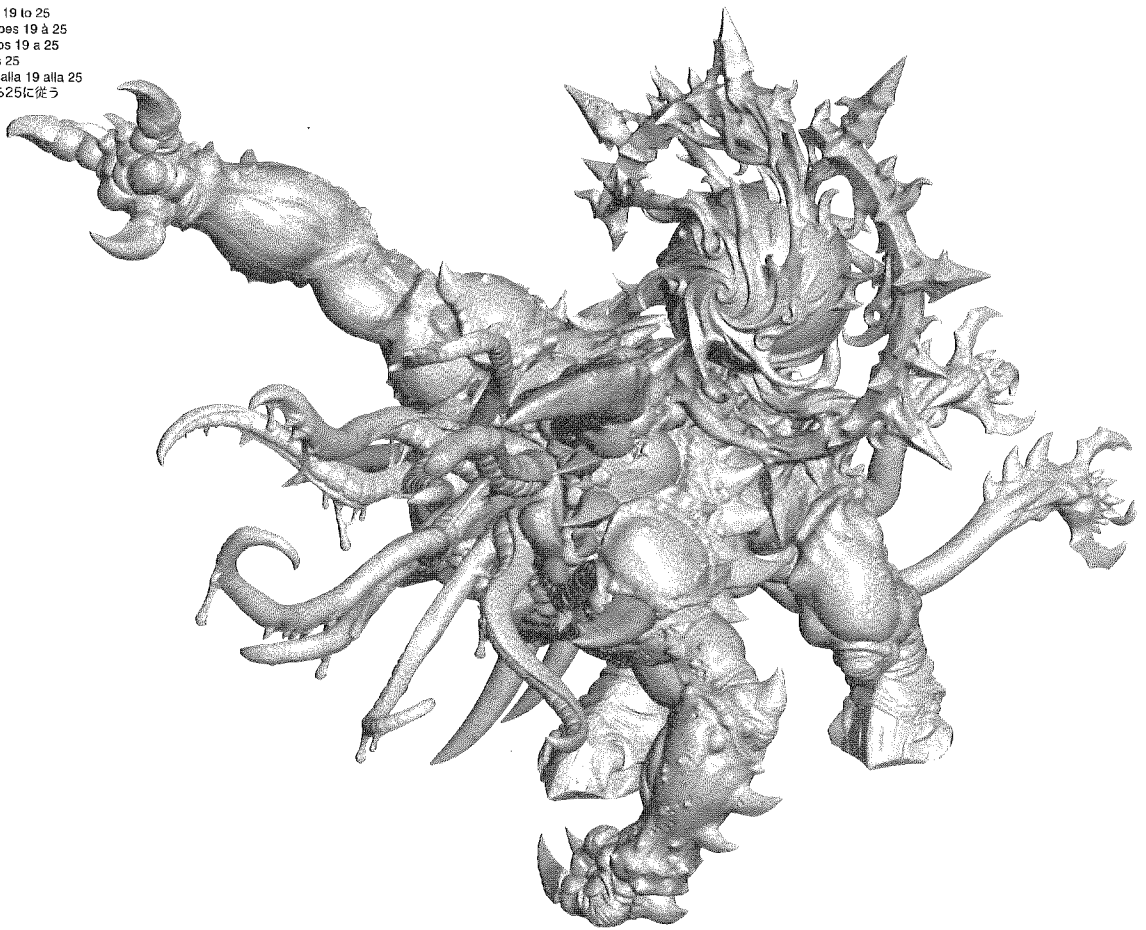
SLAUGHTERBRUTE • CARNABRUTE • BRUTO DESPECADOR
SCHLÄCHTERBESTIE • COLOSSO MASSACRATORE • スローターブルート

Follow stages 14 to 18
Suivre les étapes 14 à 18
Sigue los pasos 14 a 18
Schritte 14 bis 18
Segui le fasi dalla 14 alla 18
ステップ14から18に従う



MUTALITH VORTEX BEAST • MUTALITH É VORTEX • BESTIA DE VÓRTICE MUTALITH
MUTALITH-WANDELBESTIE • BESTIA DEL CAMBIAMENTO MUTALITH • ミュータリス・ヴォーテックスビースト

Follow stages 19 to 25
Suivre les étapes 19 à 25
Sigue los pasos 19 a 25
Schritte 19 bis 25
Segui le fasi dalla 19 alla 25
ステップ19から25に従う



! Follow steps 14-18 to build the Slaughterbrute
 Suivre les étapes 14 à 18 pour assembler une Carnebrute
 Sigue los pasos 14 a 18 para montar un Bruto Despedazador

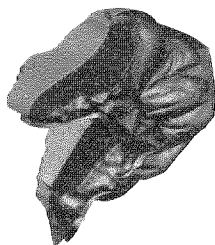
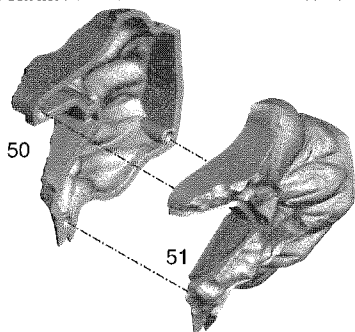
Folge den Schritten 14-18, um die Schlächterbestie zu bauen
 Segui le fasi 14 - 18 per assemblare il Colosso Massacratore
 スローダーブルートを組み立てるには、ステップ14~18に従うこと

! Follow step 14 to build the head option 1 & step 15 to build head option 2
 Suivre l'étape 14 pour obtenir l'option de tête 1 & l'étape 15 pour obtenir l'option de tête 2
 Sigue el paso 14 para montar la opción de cabeza 1 y el paso 15 para montar la opción de cabeza 2

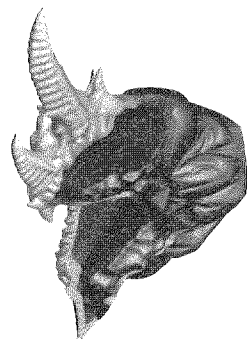
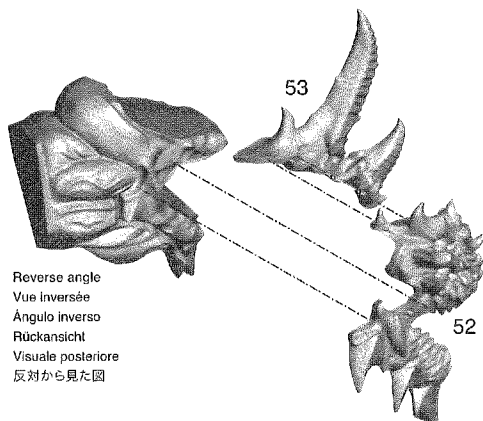
Folge Schritt 14, um Kopf 1 zu bauen, oder Schritt 15, um Kopf 2 zu bauen
 Segui la fase 14 per assemblare l'opzione della testa 1 e la fase 15 per l'opzione della testa 2
 頭のバージョン1を組み立てる場合はステップ14に従い、頭のバージョン2を組み立てる場合はステップ15に従う

14 HEAD ASSEMBLY • ASSEMBLAGE DE LA TÊTE • MONTAJE DE LA CABEZA
 ZUSAMMENBAU VON KOPF 1 • ASSEMBLAGGIO DELLA TESTA • 頭の組み立て(バージョン1)

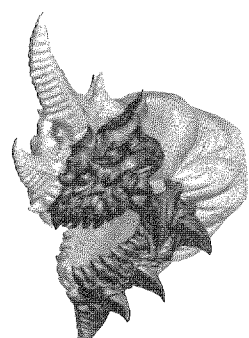
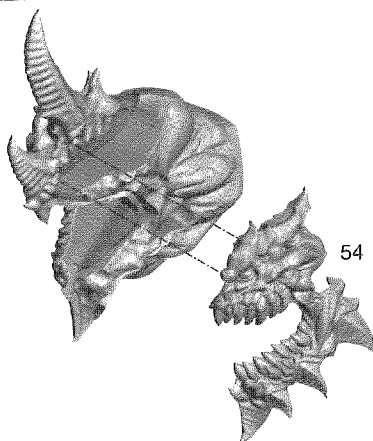
A



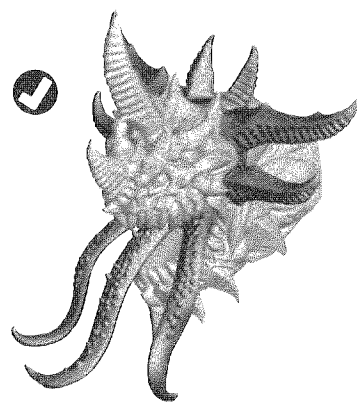
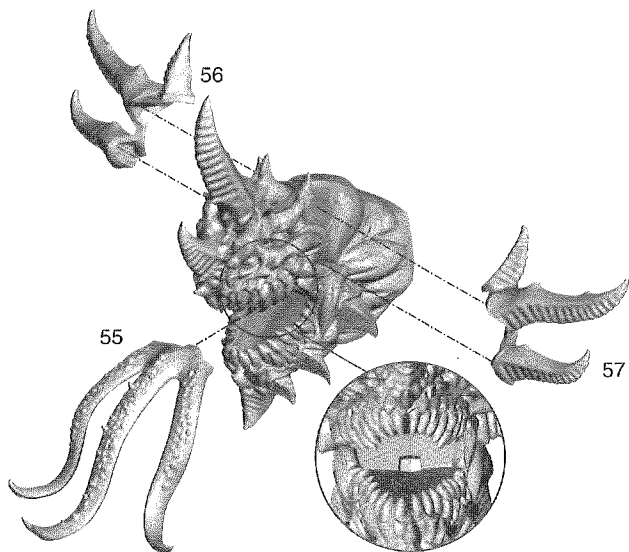
B



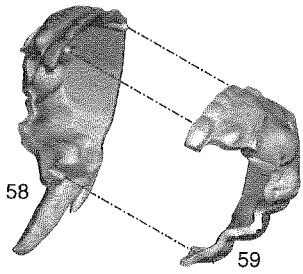
C



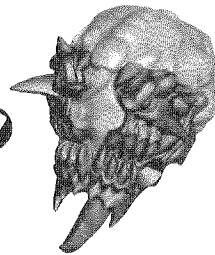
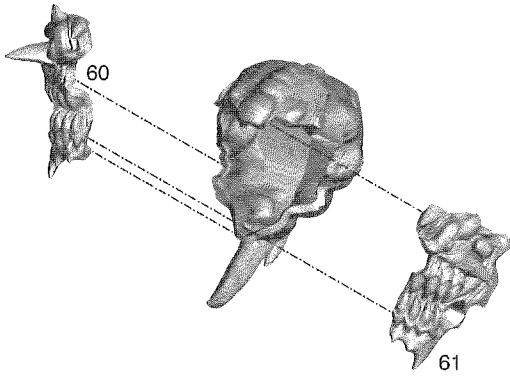
D



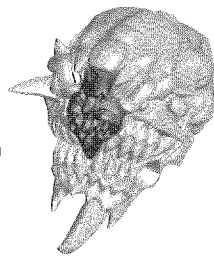
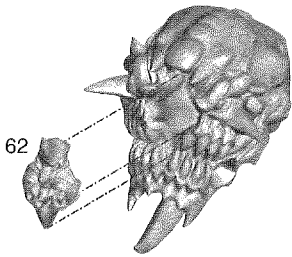
A



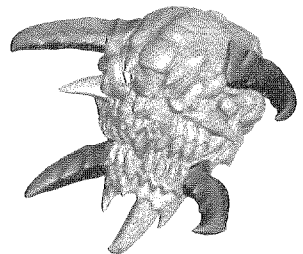
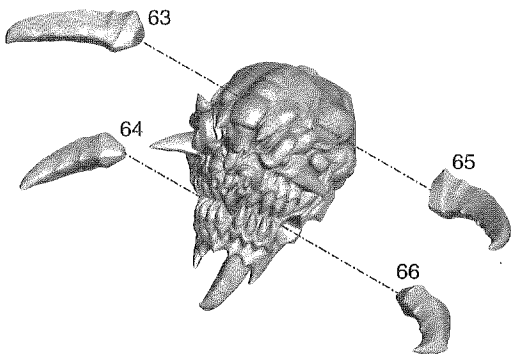
B

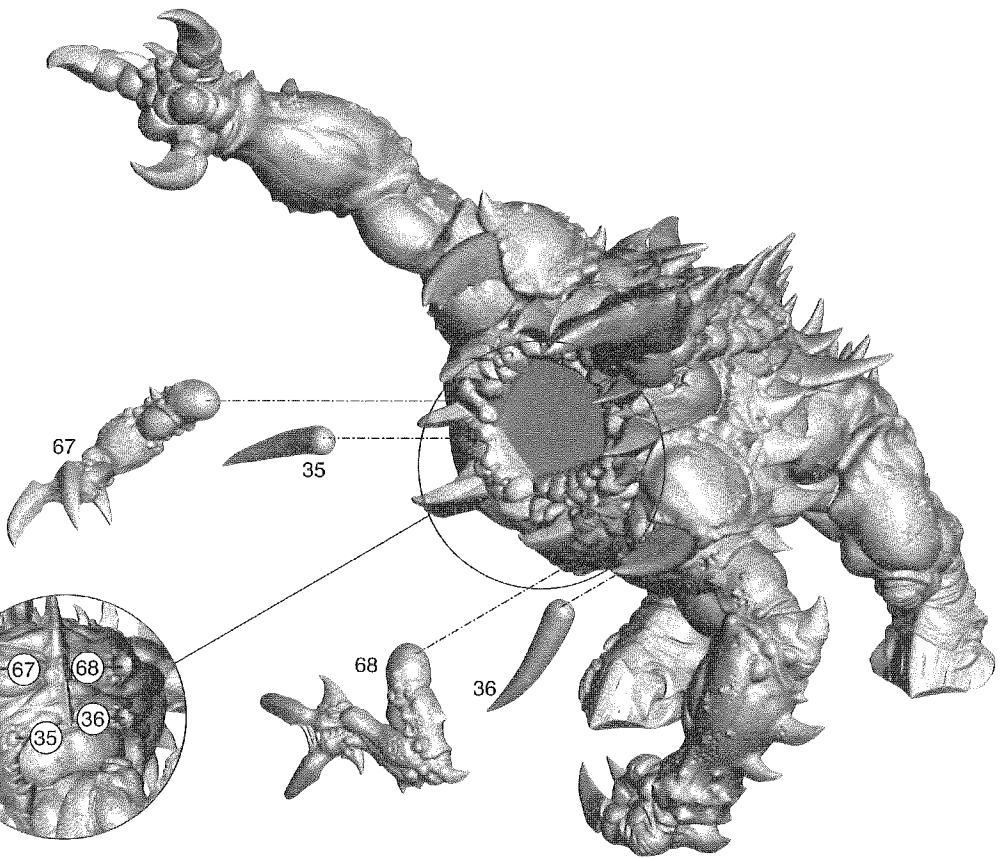


C

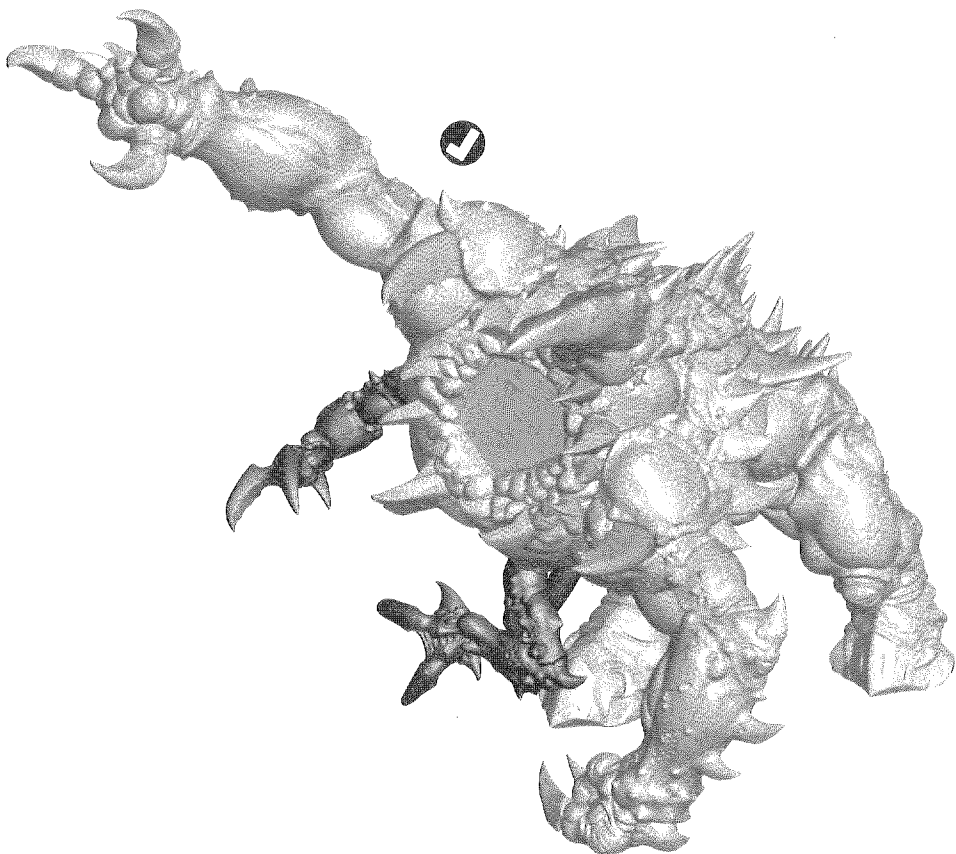
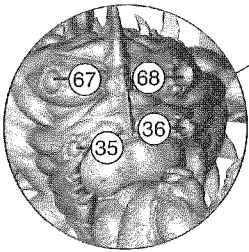


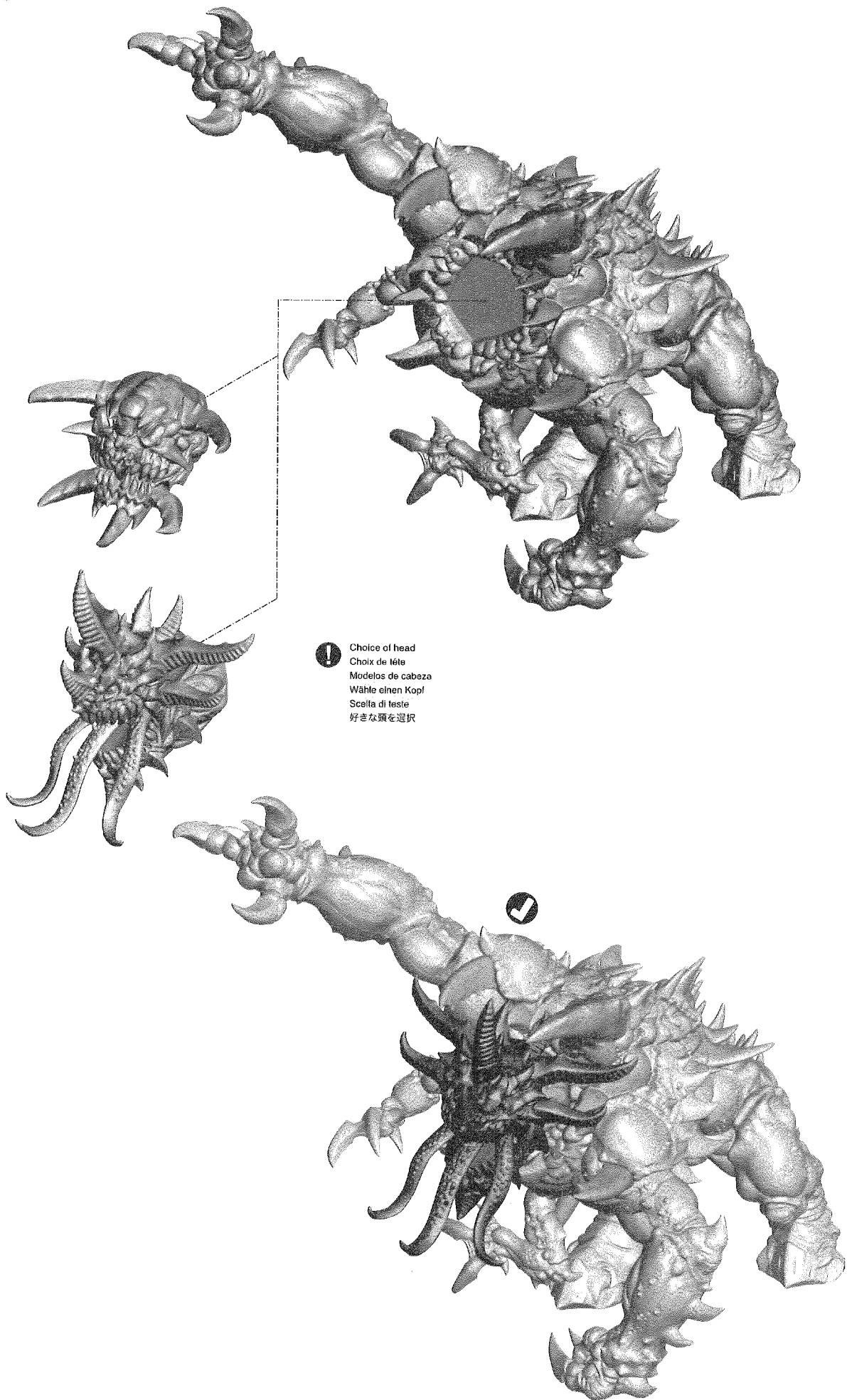
D



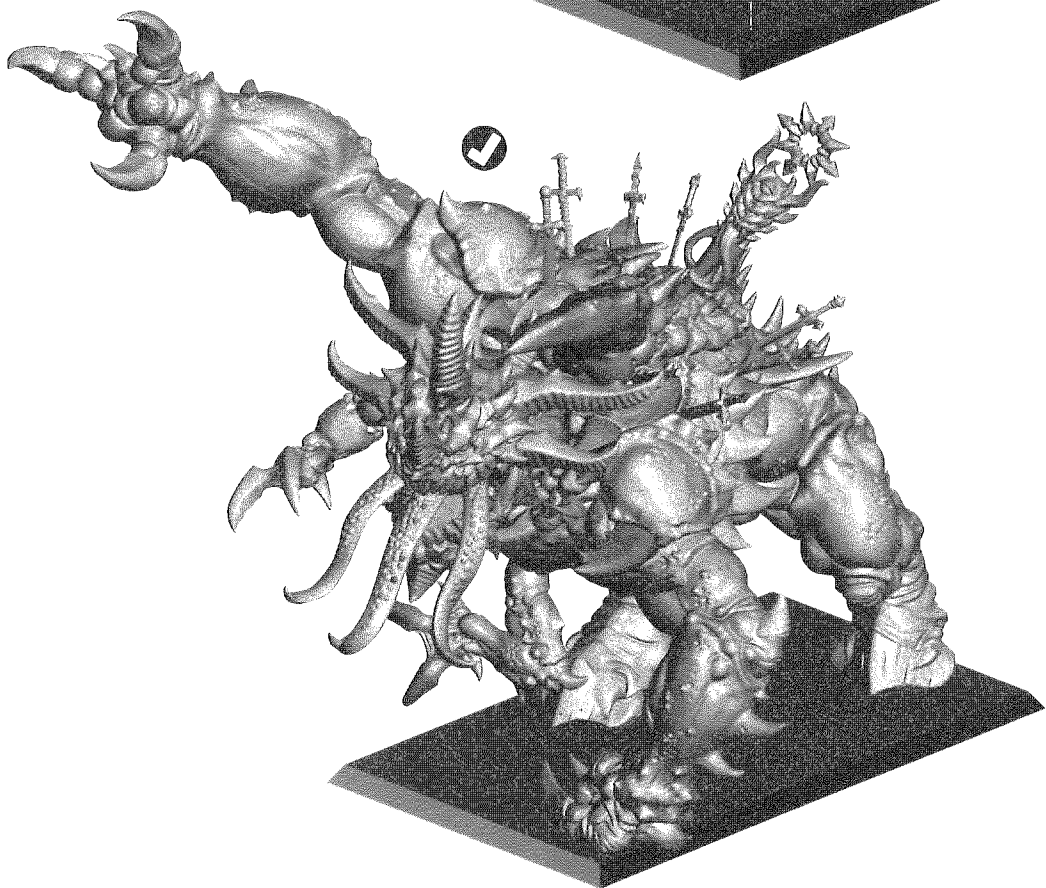
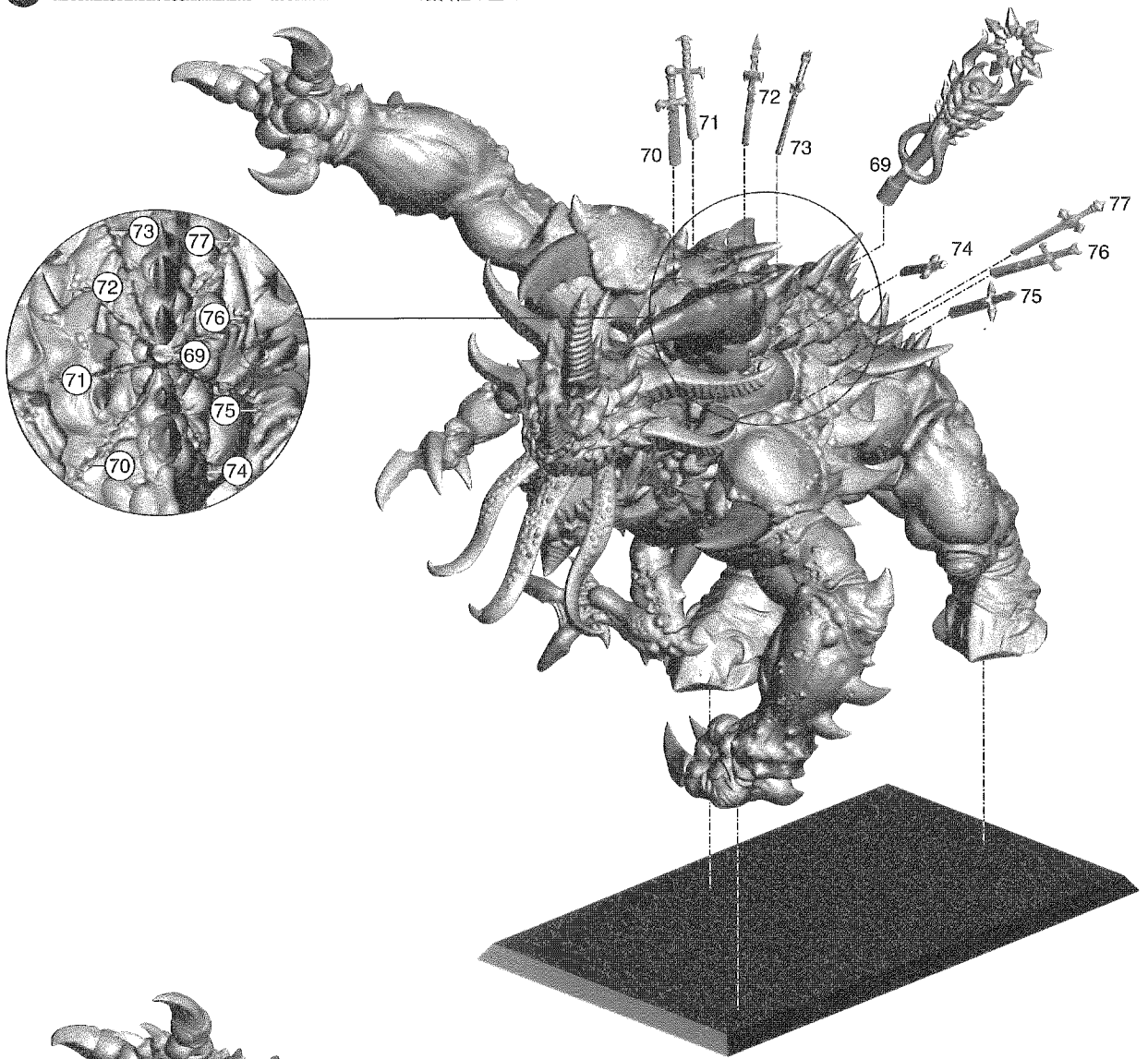


Underside view
 Vue inférieure
 Vista de la parte inferior
 Ansicht der Unterseite
 Visuale dal basso
 下から見た図





Choice of head
 Choix de tête
 Modelos de cabeza
 Wähle einen Kopf
 Scelta di teste
 好きな頭を選択





Follow steps 19-25 to build the Mutalith Vortex Beast
 Suivre les étapes 19 à 25 pour assembler une Mutalith à Vortex
 Sigue los pasos 19 a 25 para montar la Bestia de Vórtice Mutalith

Folge den Schritten 19-25, um die Mutalith-Wandelbestie zu bauen
 Segui le fasi 19 - 25 per assemblare la Bestia del Cambiamento Mutalith
 ミュータリス・ウォーテックスビーストを組み立てるには、ステップ19~25に従うこと

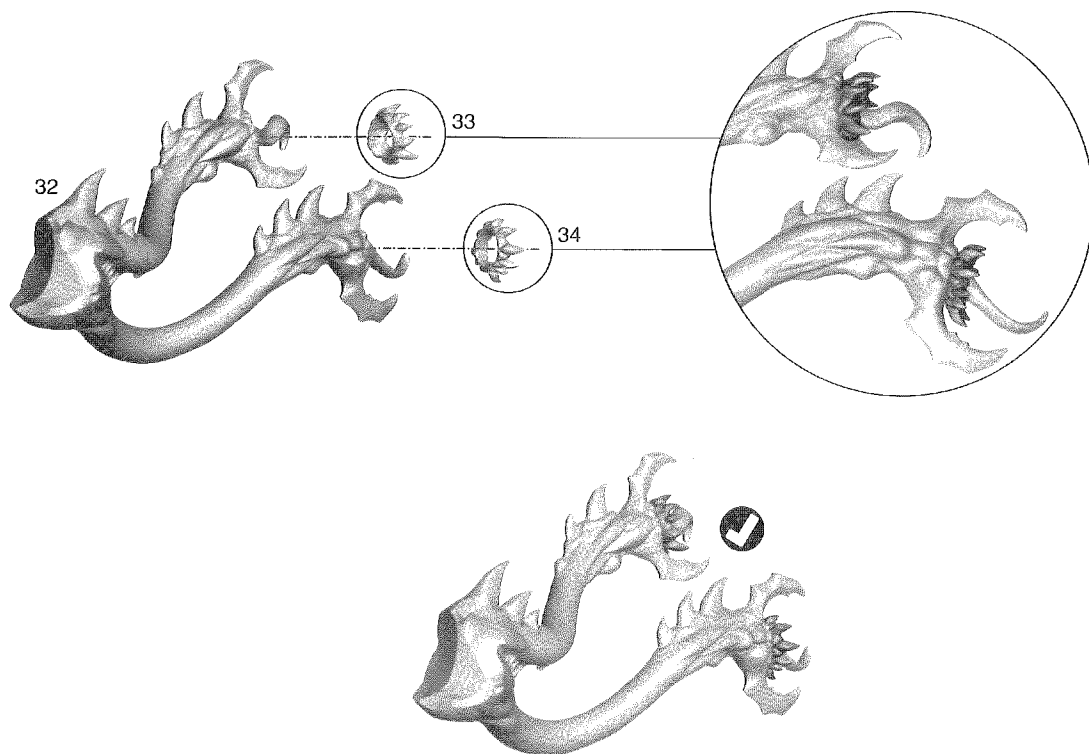
19

TENTACLE ASSEMBLY • ASSEMBLAGE DES TENTACULES • MONTAJE DE LOS TENTÁCULOS
 ZUSAMMENBAU DER TENTAKEL • ASSEMBLAGGIO DEI TENTACOLI • 触手の組み立て



20

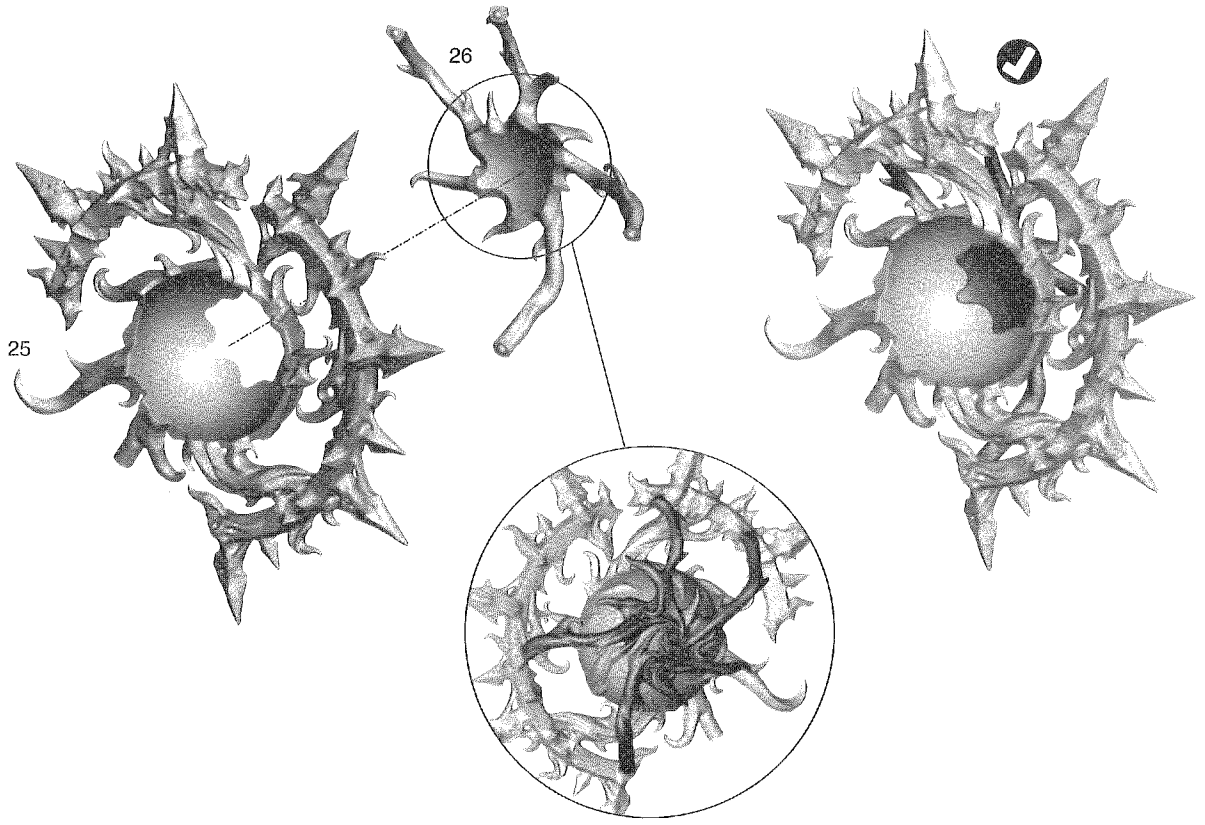
TAIL ASSEMBLY • ASSEMBLAGE DE LA QUEUE • MONTAJE DE LA COLA
 ZUSAMMENBAU DES SCHWANZES • ASSEMBLAGGIO DELLA CODA • 尾の組み立て



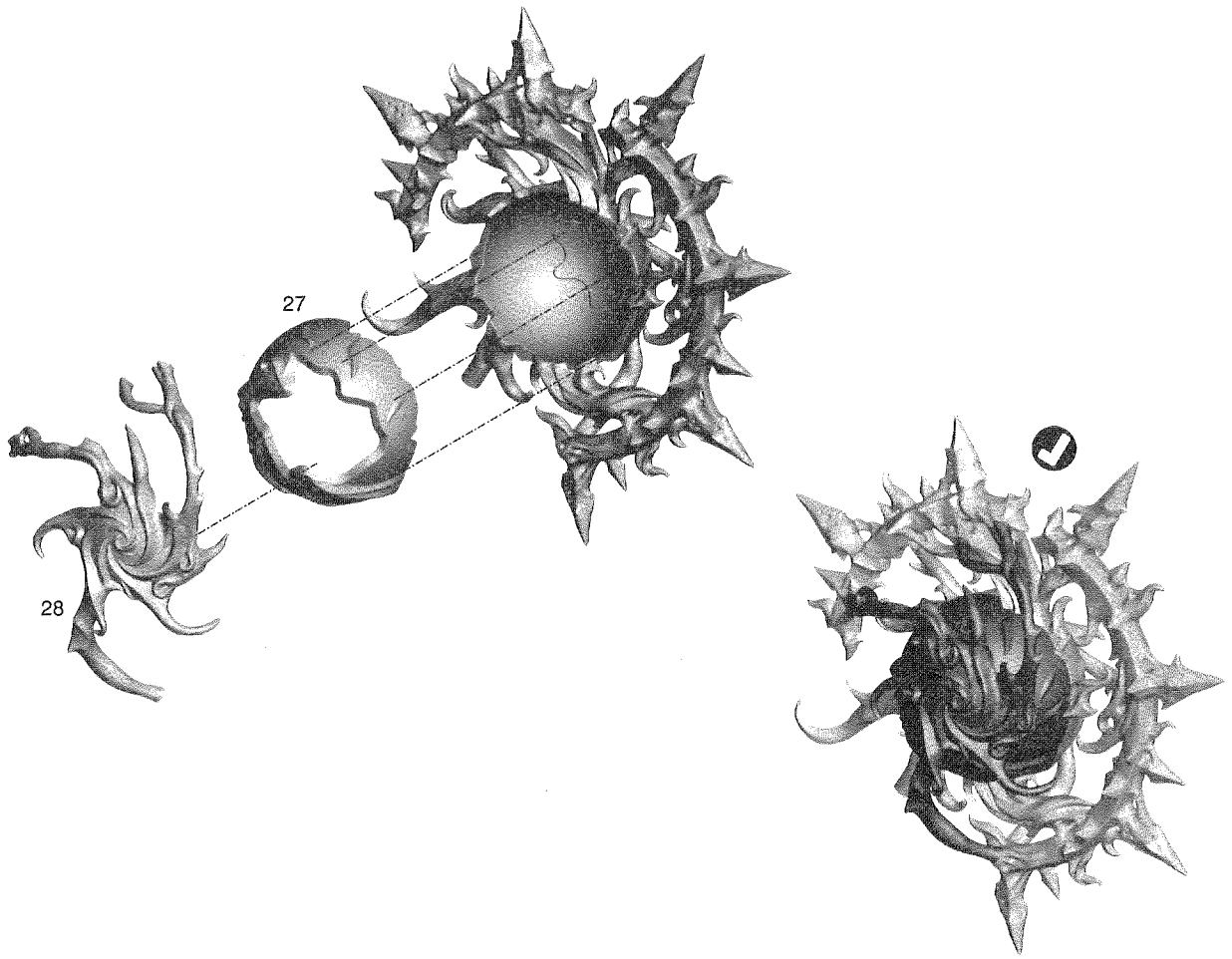
21

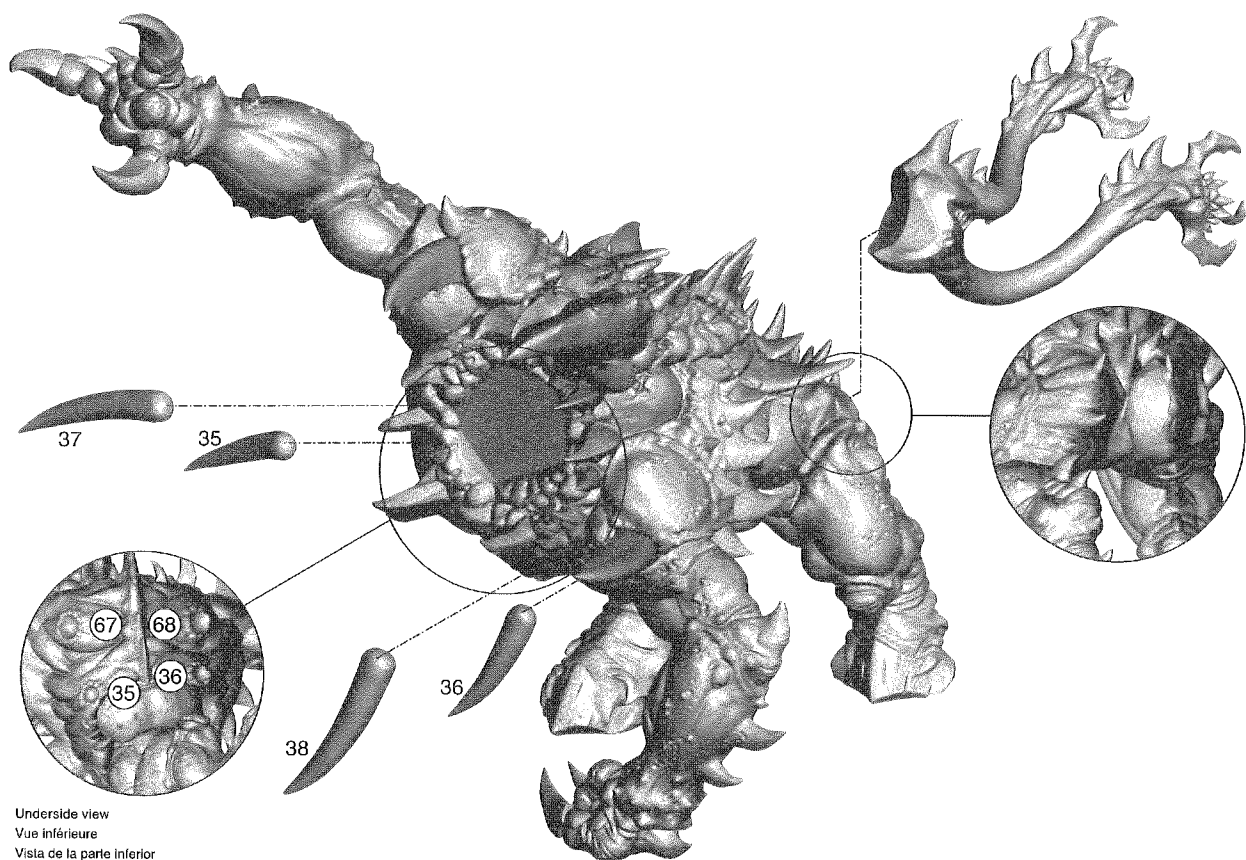
VORTEX ASSEMBLY • ASSEMBLAGE DU VORTEX • MONTAJE DEL VÓRTICE
ZUSAMMENBAU DES VORTEX • ASSEMBLAGGIO DEL VORTICE • 渦の組み立て

A



B





Underside view
 Vue inférieure
 Vista de la parte inferior
 Ansicht der Unterseite
 Visualte dal basso
 下から見た図

