



Free Downloads of Build Instructions,
Assembly Booklets & How To Guides

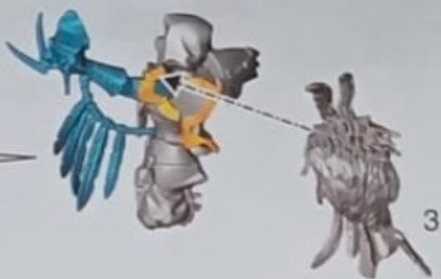
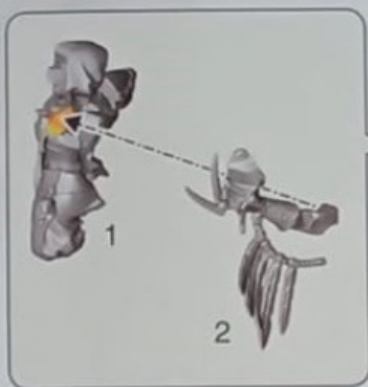
BuildInstructions.com

CORVUS CABAL

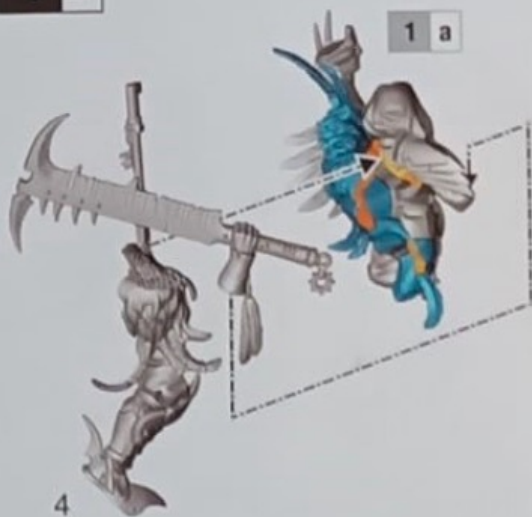


1 SHADOW PIECER x2

1 a



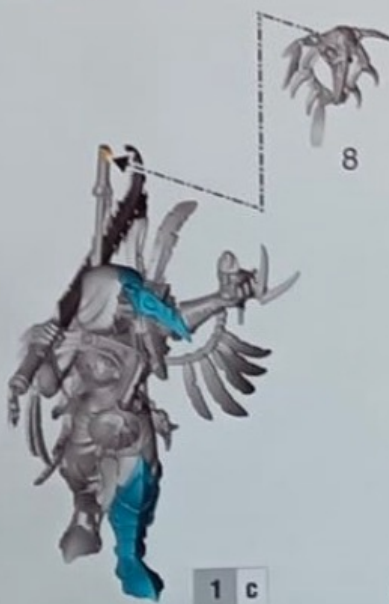
1 b



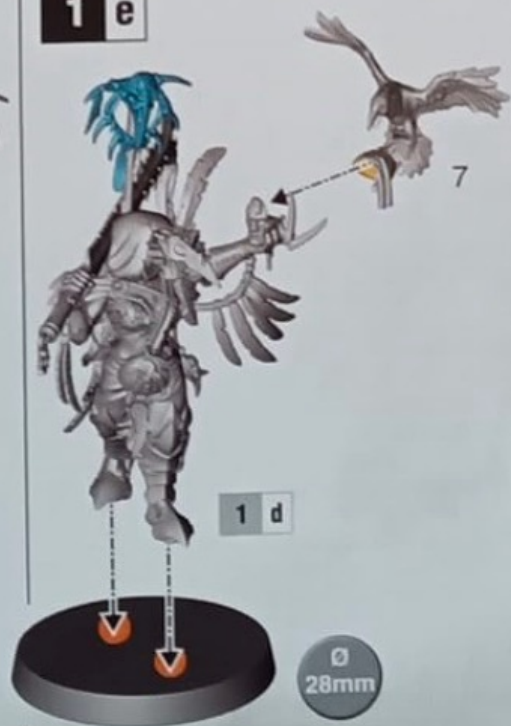
1 c



1 d



1 e



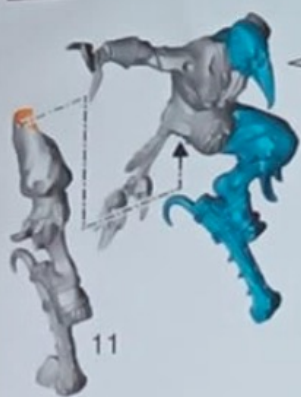
Ø 28mm

2

SHRIKE TALON

x2

2 a



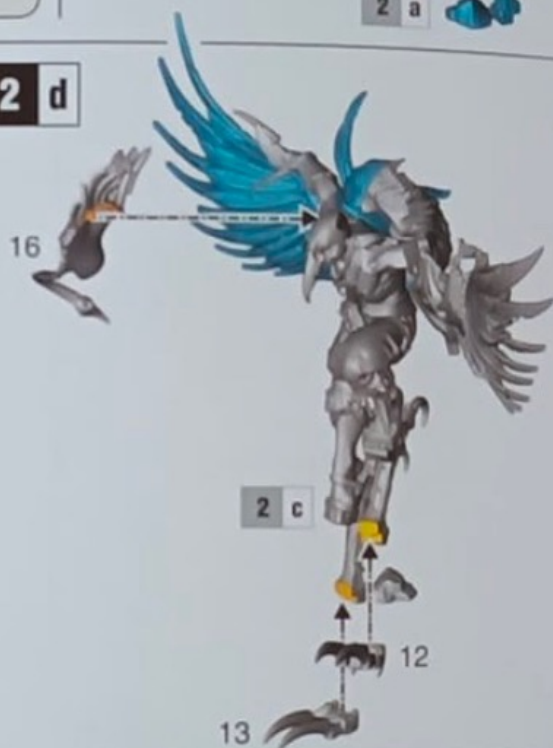
2 b



2 c



2 d

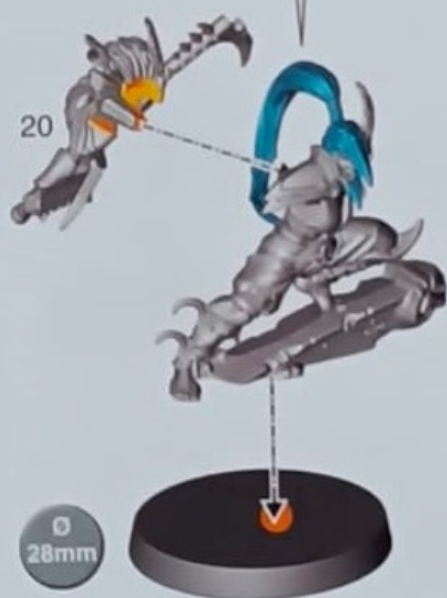
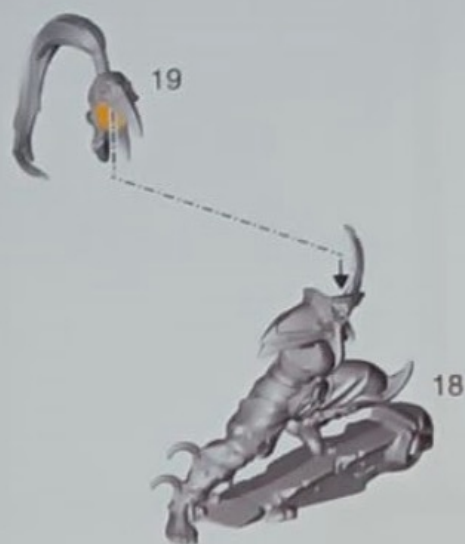


2 e


 Ø
40mm

3

SPIRE STALKER x2



4

SPIRE STALKER x2



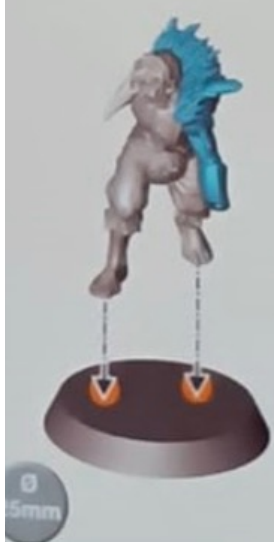
! ♂ x2

• CHOOSE THE VARIANT YOU WANT TO BUILD
• CHOISISSEZ LA VARIANTE À ASSEMBLER
• ELIGE QUÉ VERSIÓN QUIERES MONTAR
• WÄHLE DIE VARIANTE, DIE DU BAUEN MÖCHTEST
• SCEGLI LA VARIANTE CHE VUOI ASSEMBLARE

5 CABALIST

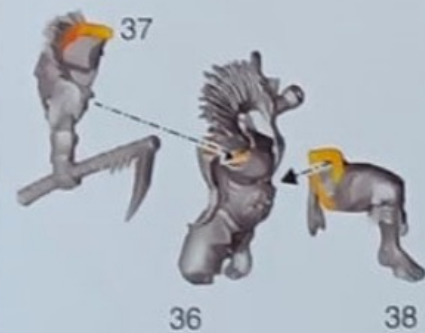
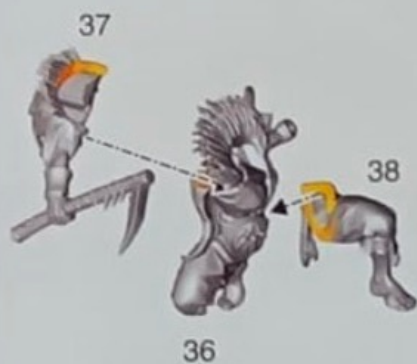


CABALIST WITH SPEAR



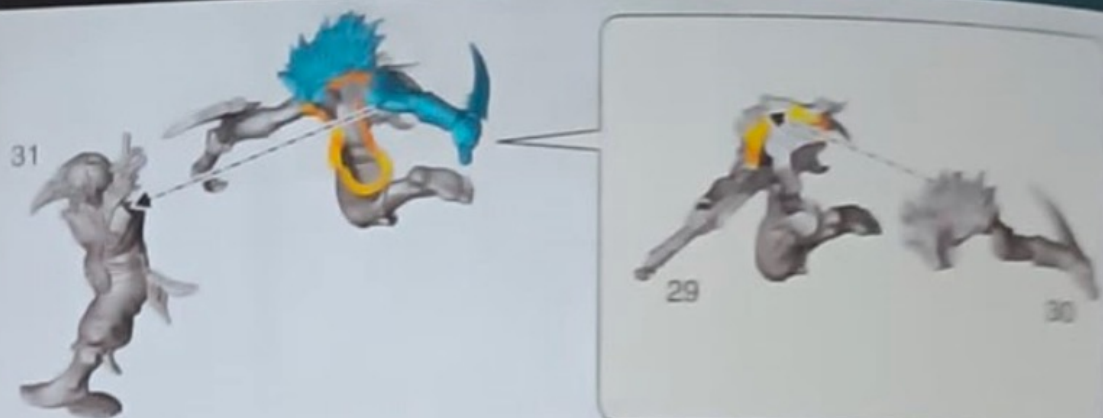


- CHOOSE THE VARIANT YOU WANT TO BUILD
- CHOISISSEZ LA VARIANTE À ASSEMBLER
- ELIGE QUÉ VERSIÓN QUIERES MONTAR
- WÄHLE DIE VARIANTE, DIE DU BAUEN MÖCHTEST
- SCEGLI LA VARIANTE CHE VUOI ASSEMBLARE

6**CABALIST WITH FAMILIAR****CABALIST WITH SPEAR**

7 CABALIST x2

7 a



7 b

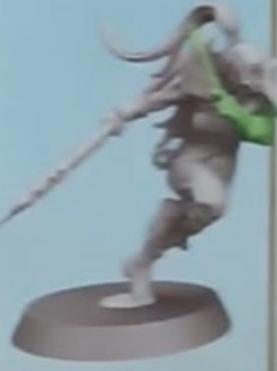
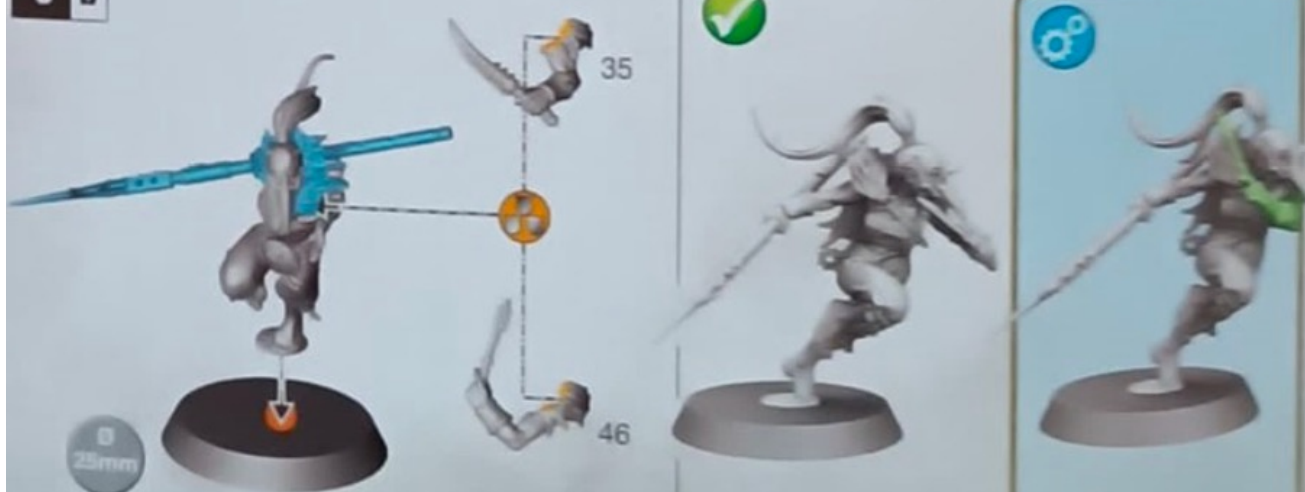


8 CABALIST WITH SPEAR x2

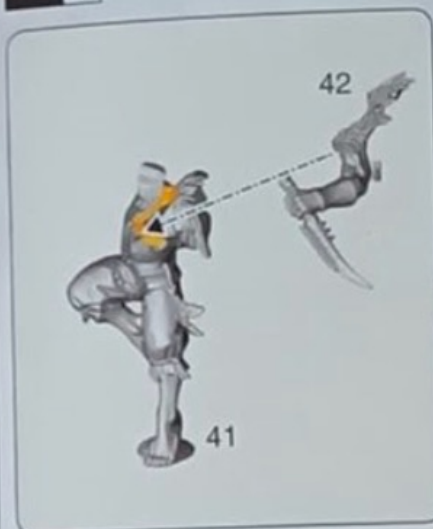
8 a



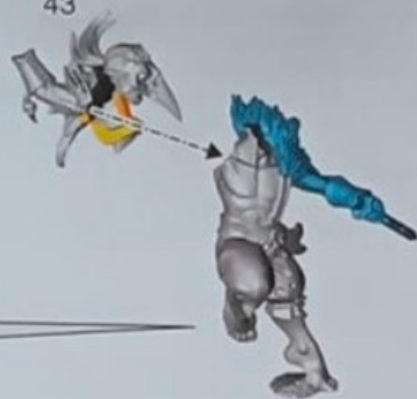
8 b



9 a



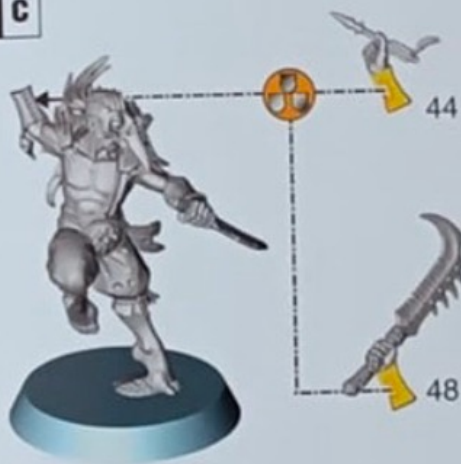
43



9 b

Ø
25mm

9 c



9 b

10 a



50



49



1-8

