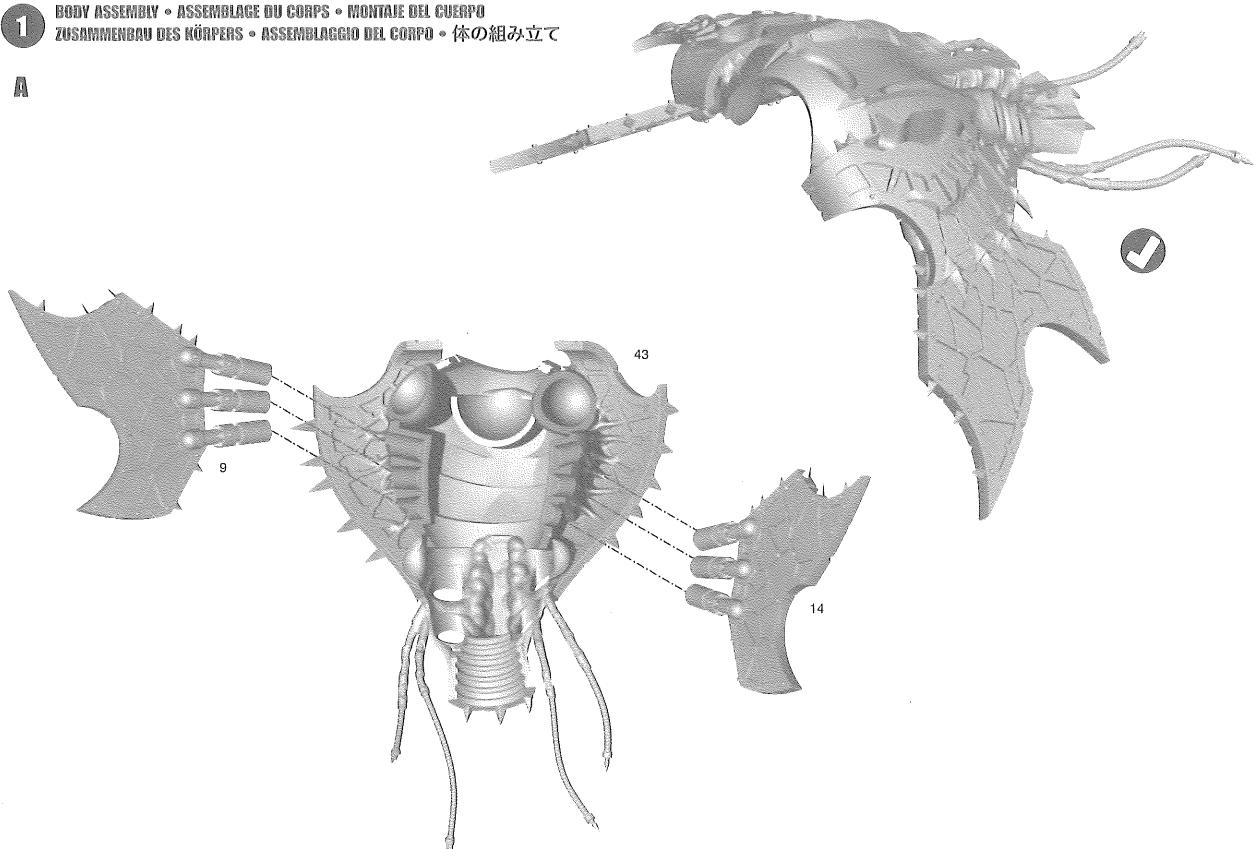
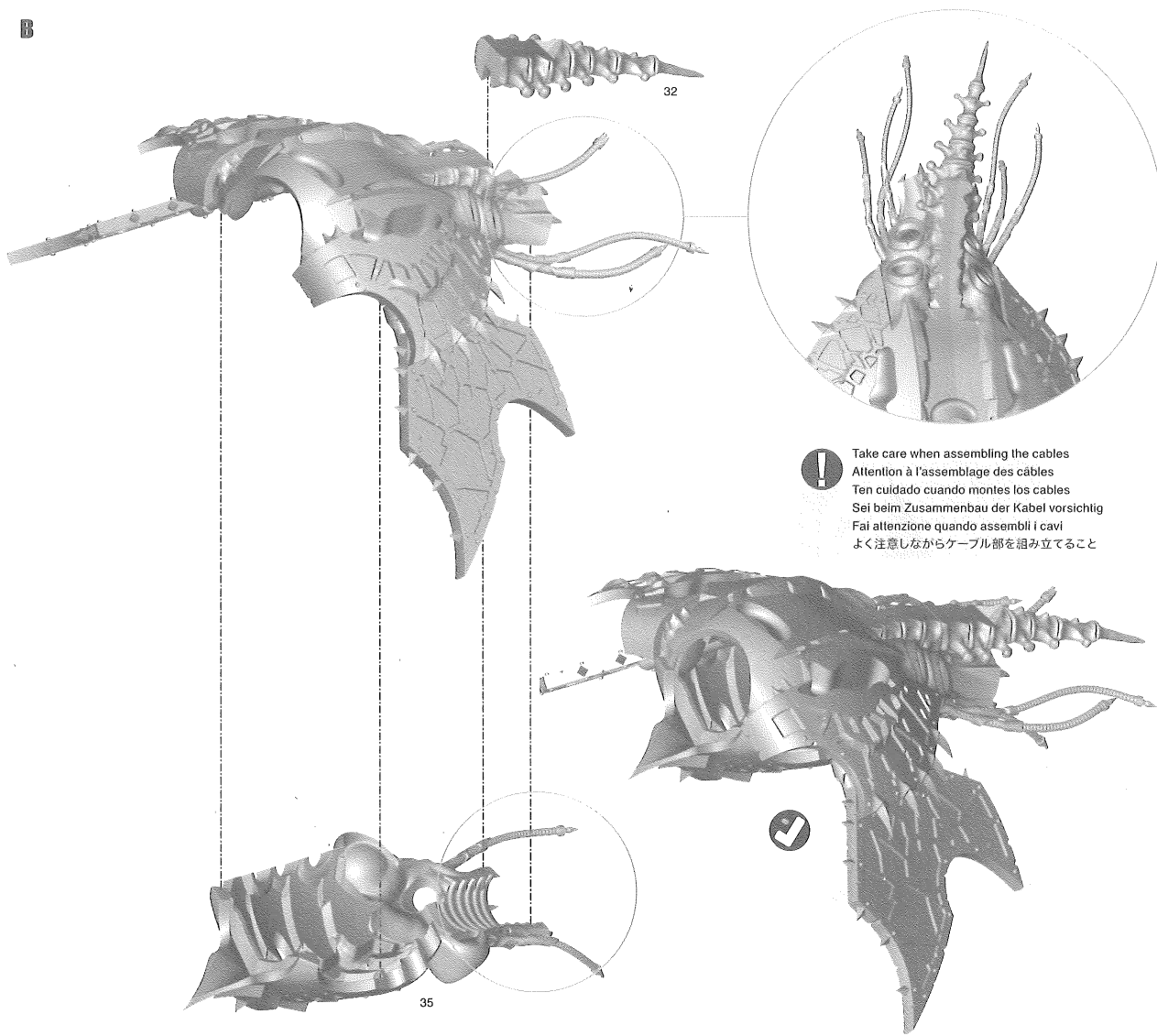


Free Downloads of Build Instructions,
Assembly Booklets & How To Guides

BuildInstructions.com

1

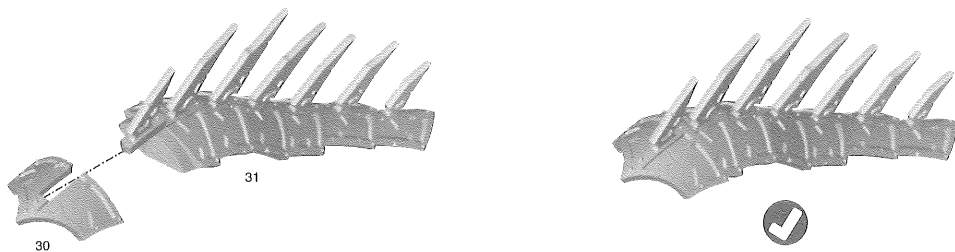
BODY ASSEMBLY • ASSEMBLAGE DU CORPS • MONTAJE DEL CUERPO
 ZUSAMMENBAU DES KÖRPERS • ASSEMBLAGGIO DEL CORPO • 体の組み立て

A**B**

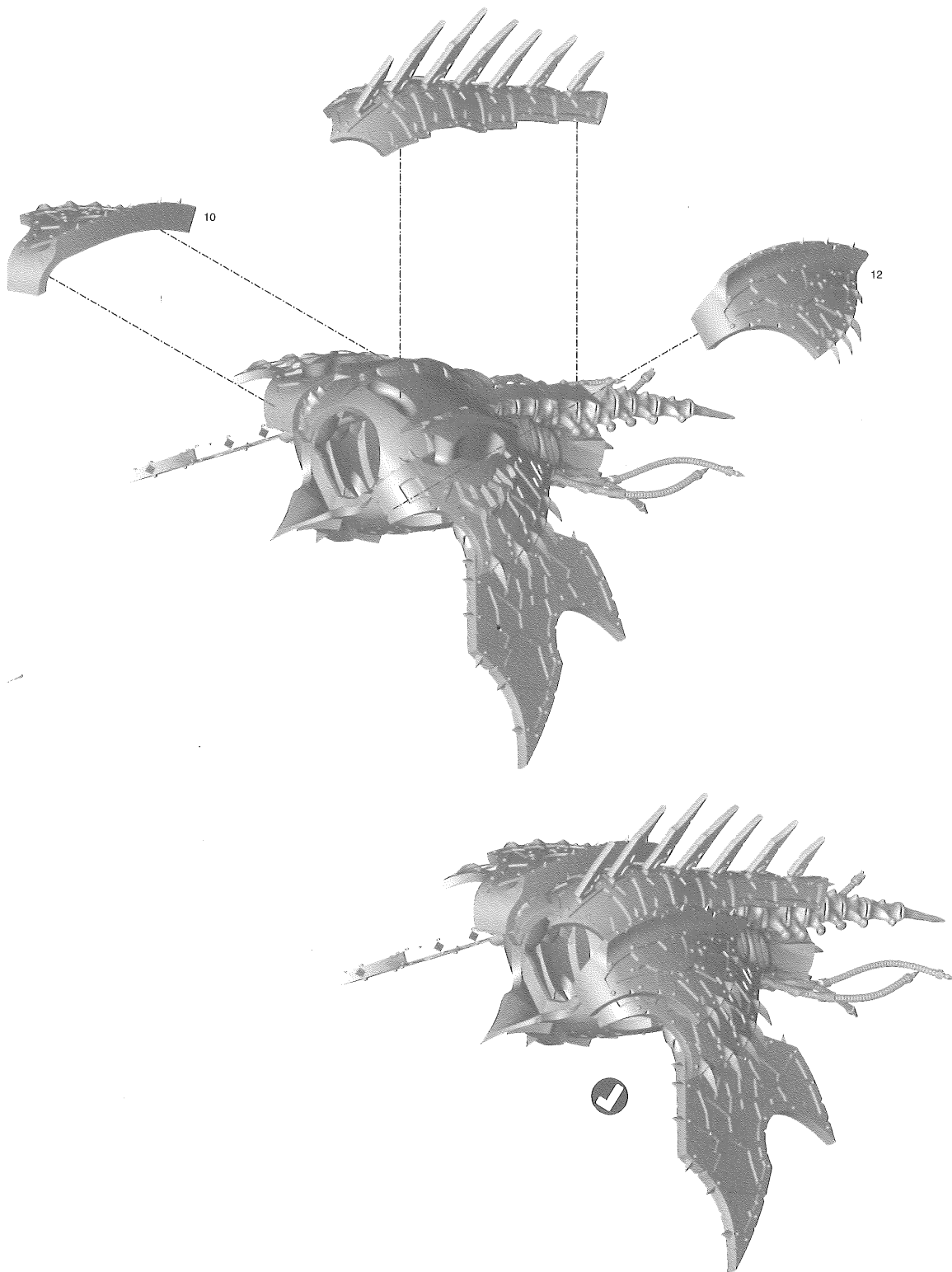
Take care when assembling the cables
 Attention à l'assemblage des câbles
 Ten cuidado cuando montes los cables
 Sei beim Zusammenbau der Kabel vorsichtig
 Fai attenzione quando assembli i cavi
 よく注意しながらケーブル部を組み立てること

35

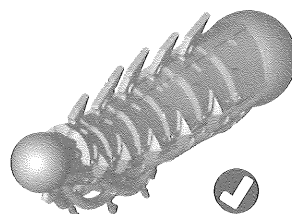
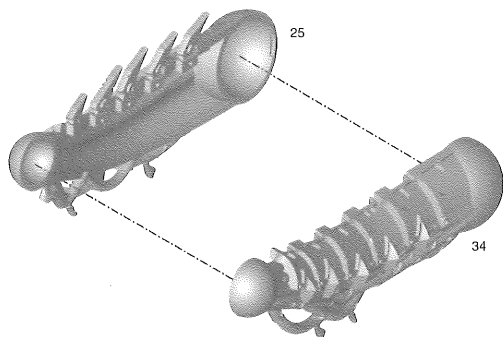
2 SPINE ASSEMBLY • ASSEMBLAGE DE L'ÉCHINE • MONTAJE DE LA ESPINA DORSAL
ZUSAMMENBAU DES STACHELKAMMS • ASSEMBLAGGIO DELLA COLONNA VERTEBRALE • 突起物の組み立て



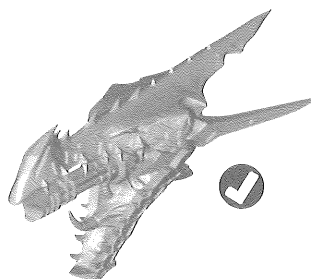
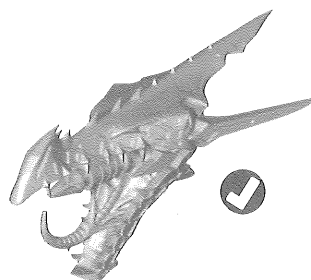
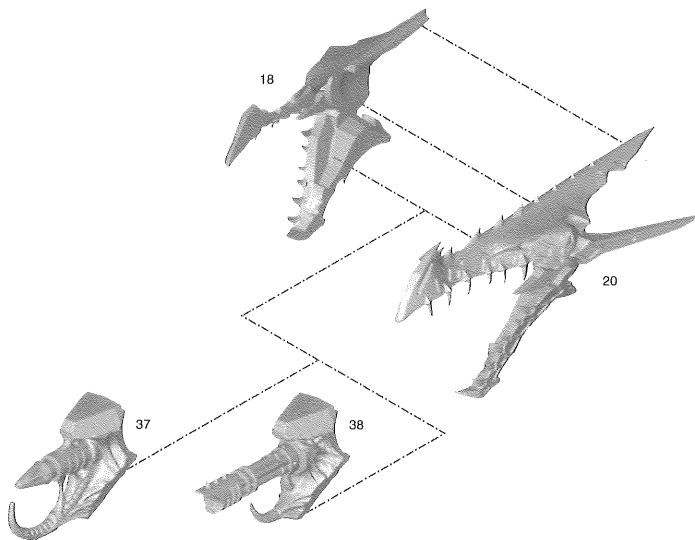
3 SPINE AND PAULDRON ATTACHMENT • ASSEMBLAGE DE L'ÉCHINE ET DES BLINDAGES • SUIETA LA ESPINA DORSAL Y LA HOMBRERA
ANBRINGEN VON STACHELKAMM UND SCHULTERPANZERN • ASSEMBLAGGIO DI COLONNA VERTEBRALE E SPALLACCI • 突起物と肩甲の取り付け



4 NECK ASSEMBLY • ASSEMBLAGE DU COU • MONTAJE DEL CUELLO
 ZUSAMMENBAU DES HALSES • ASSEMBLAGGIO DEL COLLO • 首の組み立て



5 HEAD ASSEMBLY • ASSEMBLAGE DE LA TÊTE • MONTAJE DE LA CABEZA
 ZUSAMMENBAU DES KOPFES • ASSEMBLAGGIO DELLA TESTA • 頭の組み立て

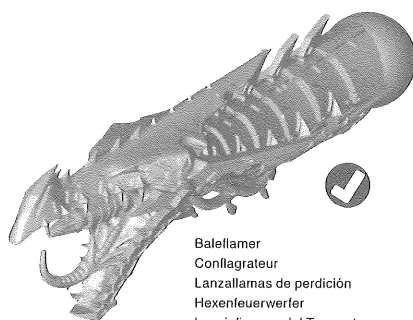
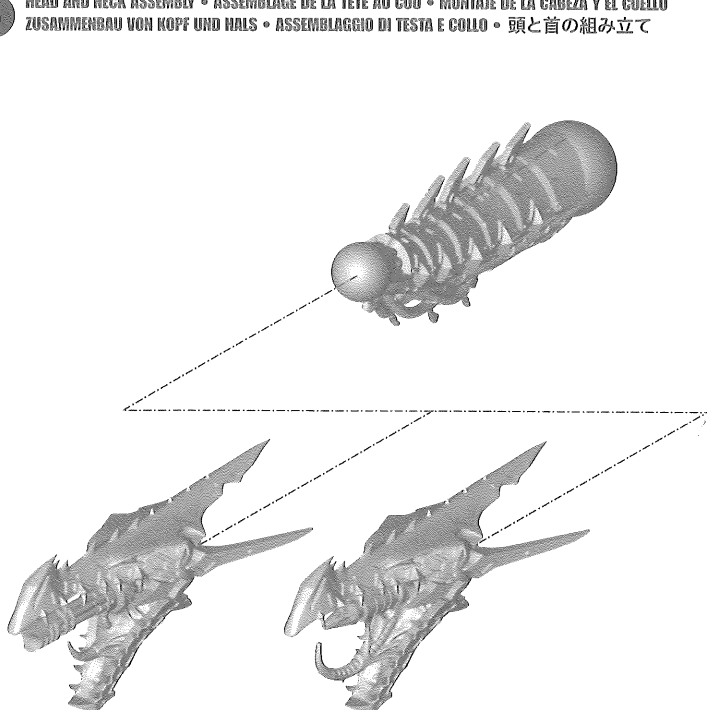


Baleflamer
 Conflagrateur
 Lanzallamas de perdición
 Hexenfeuerwerfer
 Lanciافیamme del Tormento
 ベイルフレイマー

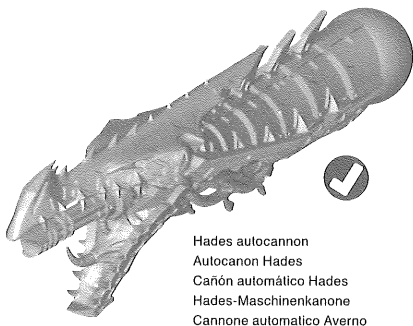
Hades autocannon
 Autocanon Hades
 Cañón automático Hades
 Hades-Maschinenkanone
 Cannone automatico Averno
 ハデス・オートキャノン

! Choice of weapon
 Choix d'arme
 Opciones de armamento
 Wähle eine Waffe
 Scella di armi
 好きな武器を選択

6 HEAD AND NECK ASSEMBLY • ASSEMBLAGE DE LA TÊTE AU COU • MONTAJE DE LA CABEZA Y EL CUELLO
 ZUSAMMENBAU VON KOPF UND HALS • ASSEMBLAGGIO DI TESTA E COLLO • 頭と首の組み立て



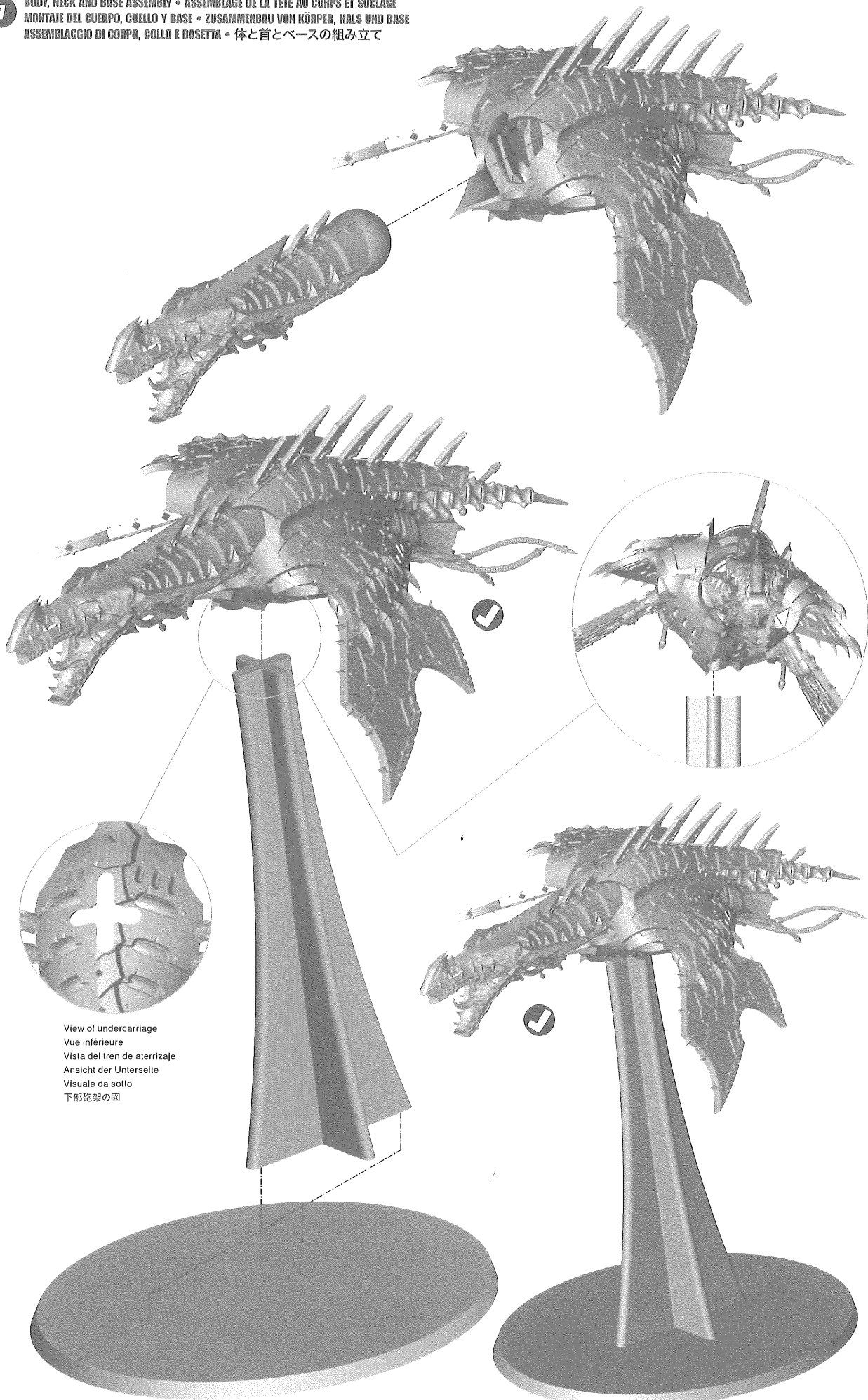
Baleflamer
 Conflagrateur
 Lanzallamas de perdición
 Hexenfeuerwerfer
 Lanciافیamme del Tormento
 ベイルフレイマー



Hades autocannon
 Autocanon Hades
 Cañón automático Hades
 Hades-Maschinenkanone
 Cannone automatico Averno
 ハデス・オートキャノン

7

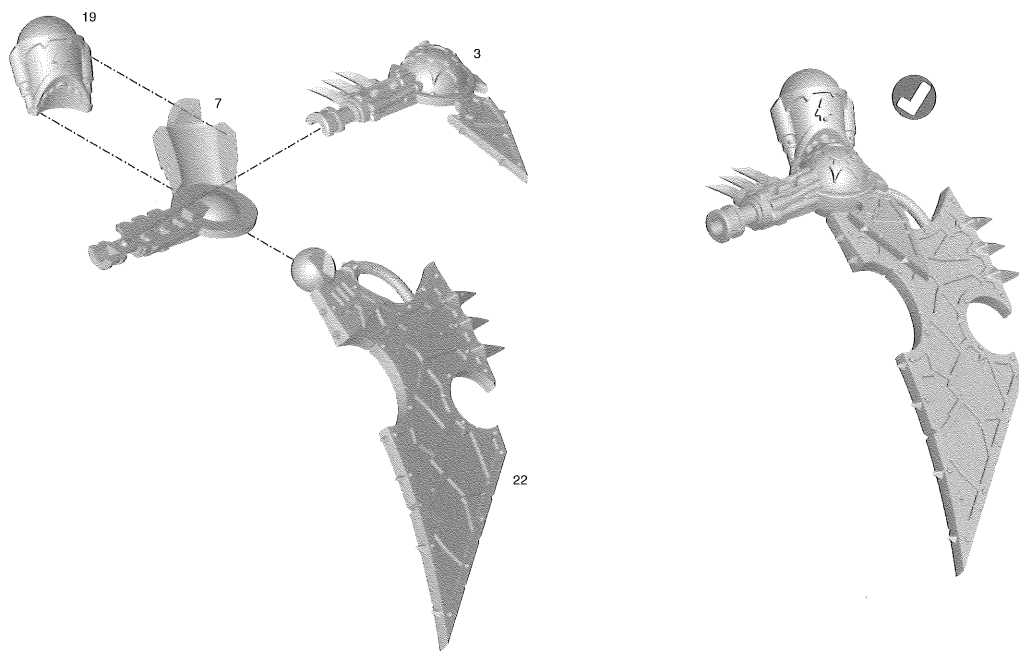
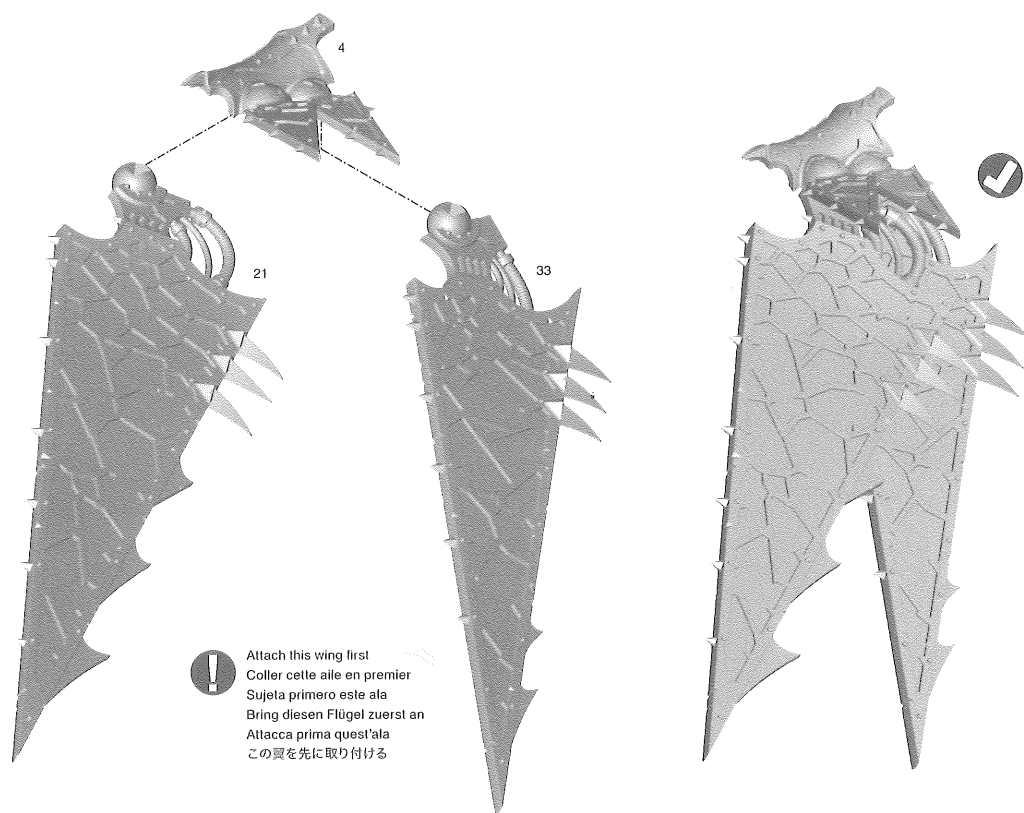
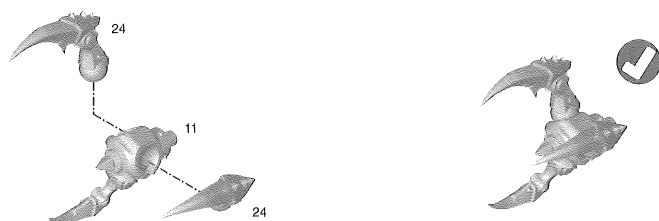
BODY, NECK AND BASE ASSEMBLY • ASSEMBLAGE DE LA TÊTE AU CORPS ET SOCLAGE
MONTAJE DEL CUERPO, CUELLO Y BASE • ZUSAMMENBAU VON KÖRPER, HALS UND BASE
ASSEMBLAGGIO DI CORPO, COLLO E BASETTA • 体と首とベースの組み立て



View of undercarriage
 Vue inférieure
 Vista del tren de aterrizaje
 Ansicht der Unterseite
 Visuale da sotto
 下部砲架の図

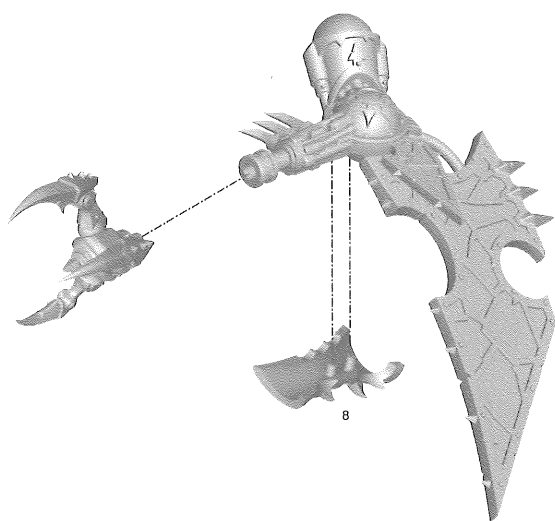
8

LEFT ARM, WING AND CLAW ASSEMBLY • ASSEMBLAGE DES BRAS, AILES ET SERRES GAUCHES • MONTAJE DEL BRAZO IZQUIERDO, ALA Y GARRA
 ZUSAMMENBAU VON LINKEM ARM, FLÜGEL UND KLAUE • ASSEMBLAGGIO DI BRACCIO SINISTRO, ALA E ARTIGLIO • 左腕、翼、鉤爪の組み立て

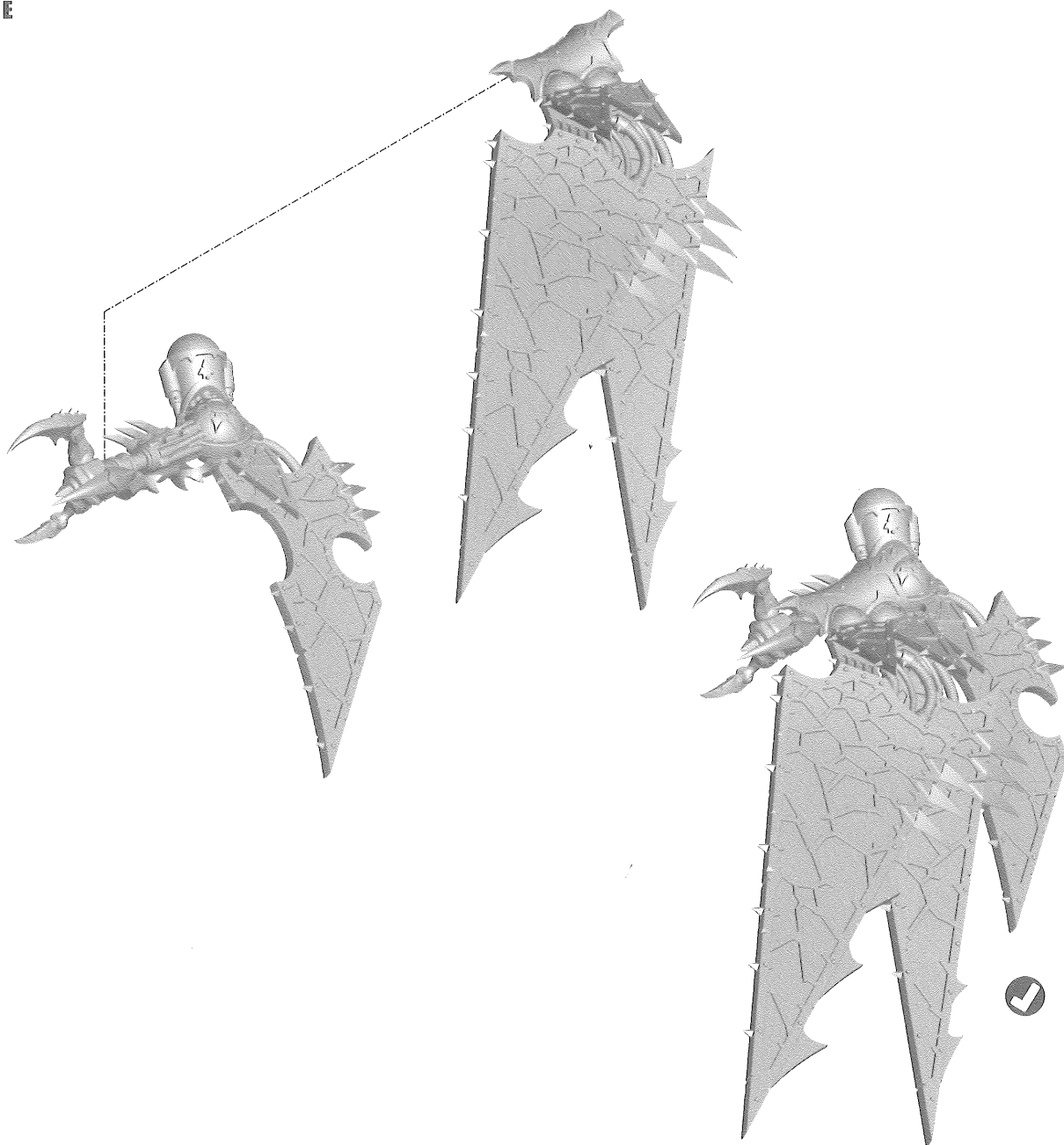
A**B****C**

LEFT ARM, WING AND CLAW ASSEMBLY • ASSEMBLAGE DES BRAS, AILES ET SERRES GAUCHES • MONTAJE DEL BRAZO IZQUIERDO, ALA Y GARRA
ZUSAMMENBAU VON LINKEM ARM, FLÜGEL UND KLAUE • ASSEMBLAGGIO DI BRACCIO SINISTRO, ALA E ARTIGLIO • 左腕、翼、鉤爪の組み立て

D



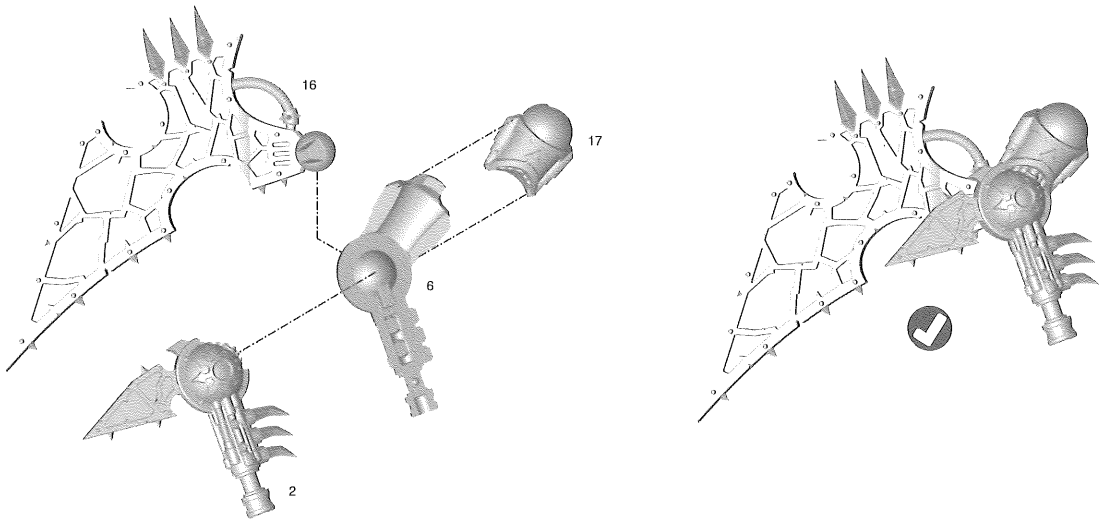
E



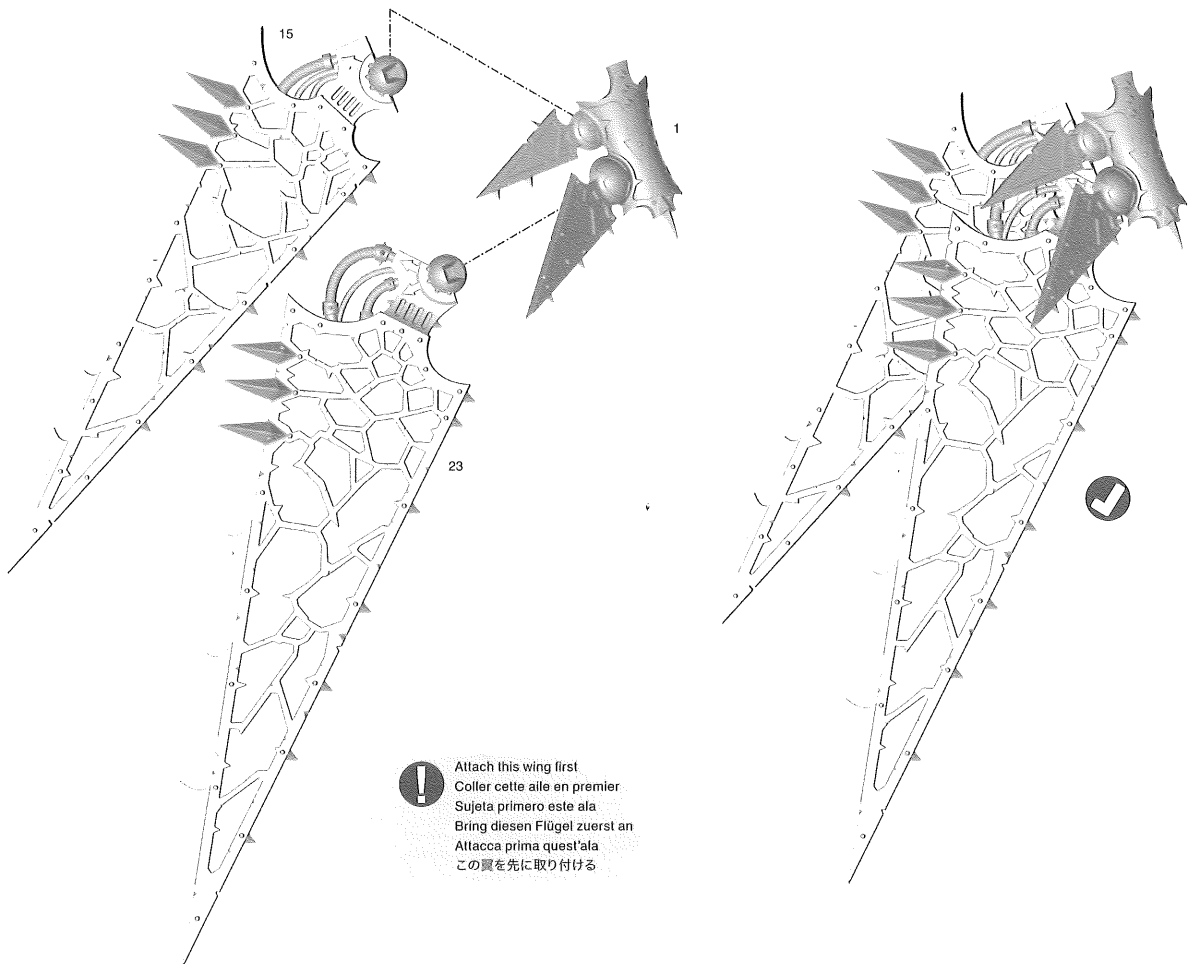
9

RIGHT ARM, WING AND CLAW ASSEMBLY • ASSEMBLAGE DES BRAS, AILES ET SERRES DROITES • MONTAJE DEL BRAZO DERECHO, ALA Y GARRA
 ZUSAMMENBAU VON RECHTERM ARM, FLÜGEL UND KLAUE • ASSEMBLAGGIO DI BRACCIO DESTRO, ALA E ARTIGLIO • 右腕、翼、鉤爪の組み立て

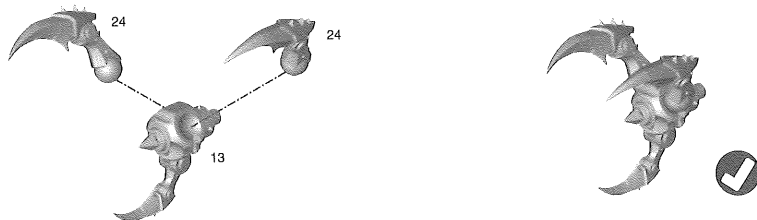
A



B

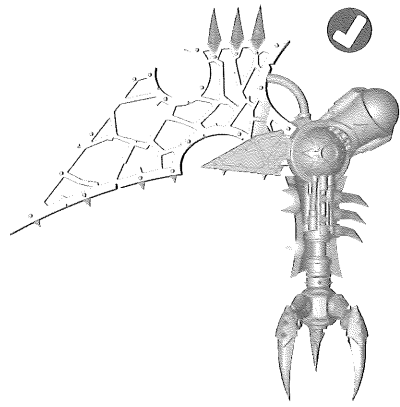
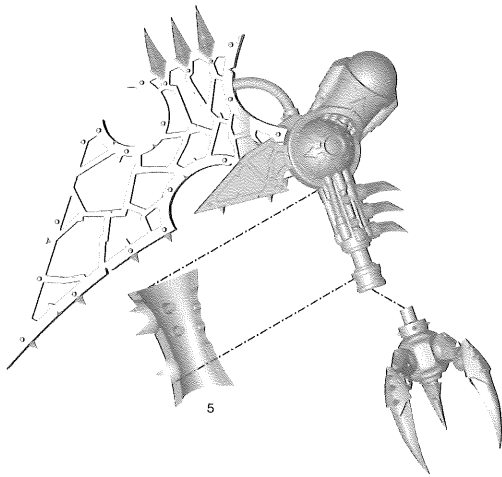


C

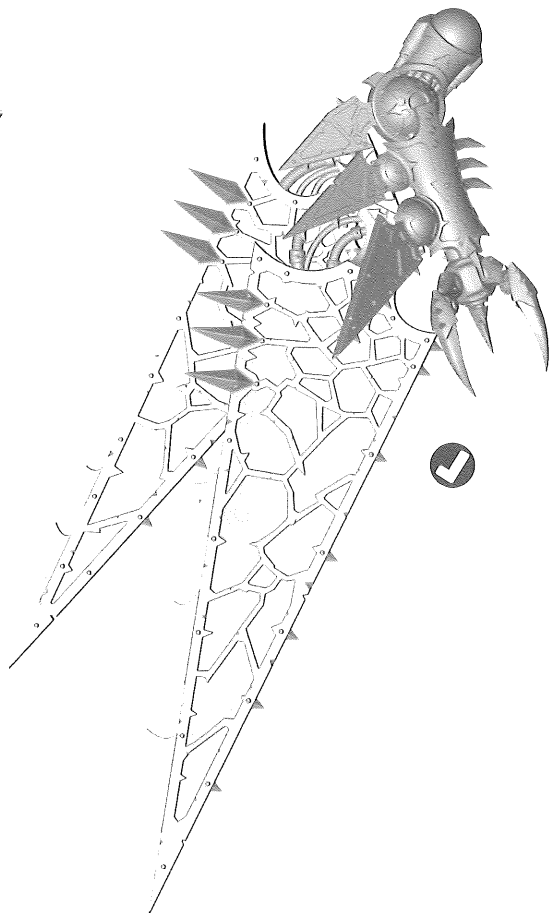
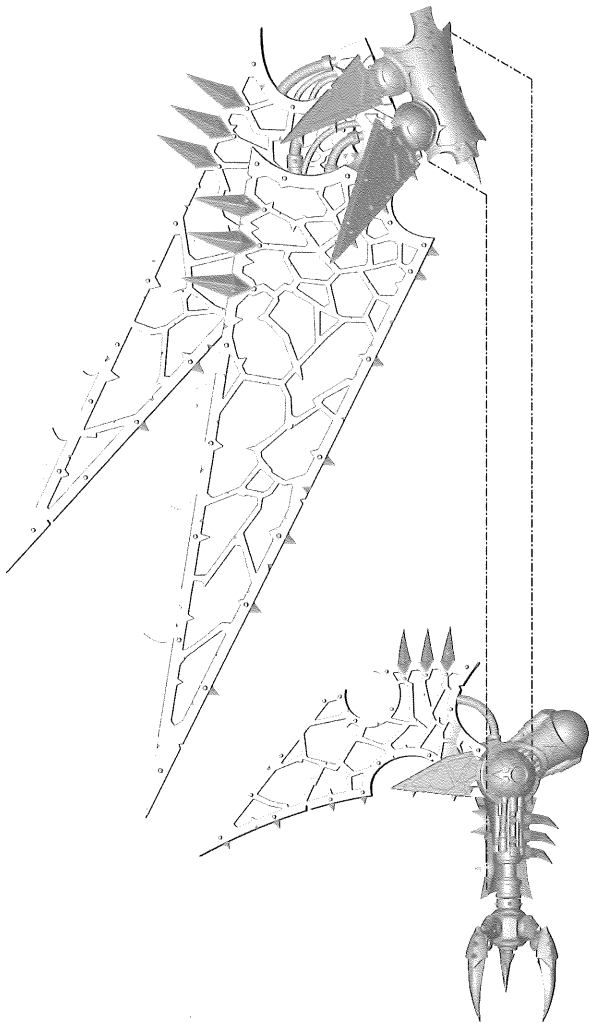


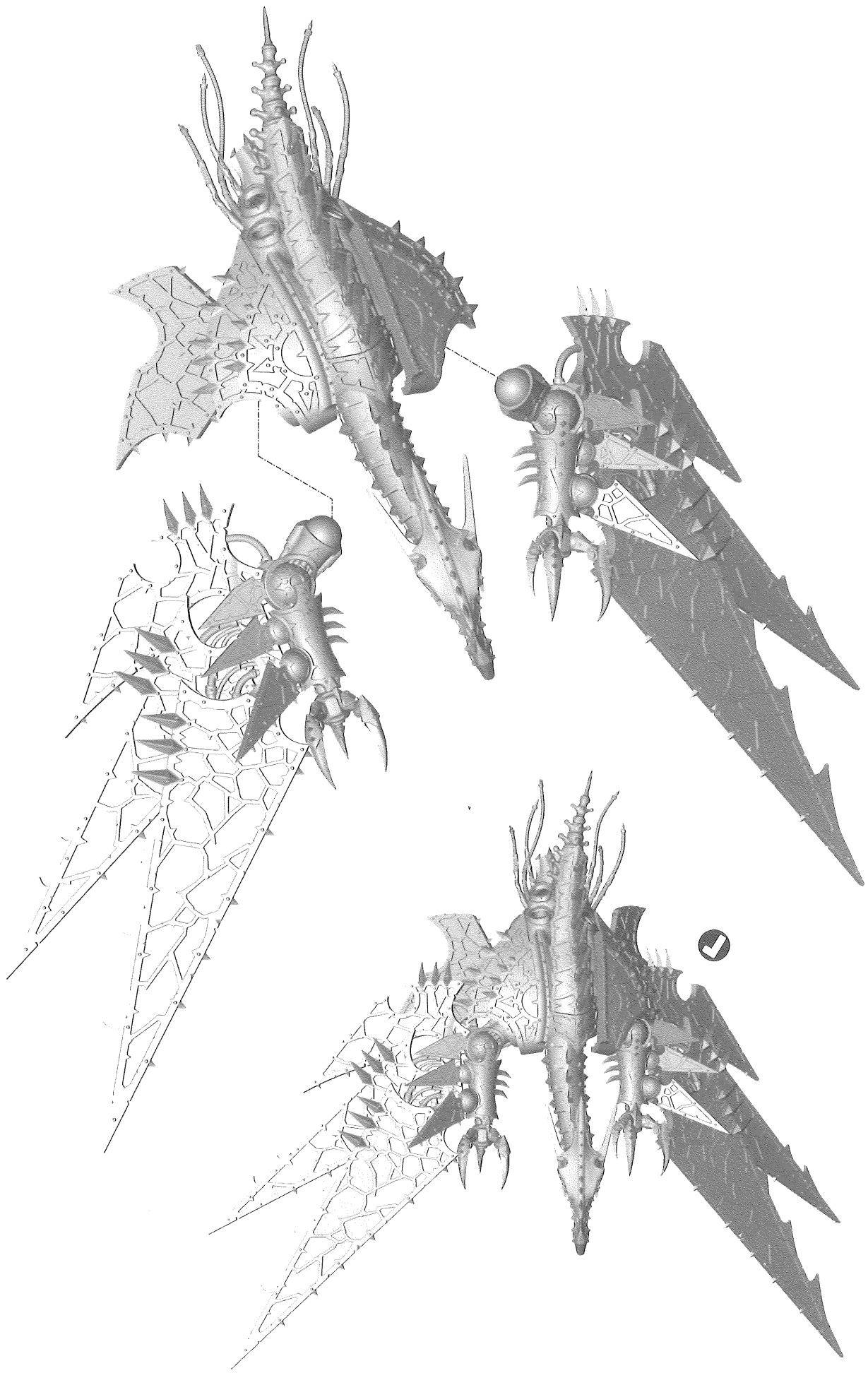
RIGHT ARM, WING AND CLAW ASSEMBLY • ASSEMBLAGE DES BRAS, AILES ET SERRES DROITES • MONTAJE DEL BRAZO DERECHO, ALA Y GARRA
ZUSAMMENBAU VON RECHTEM ARM, FLÜGEL UND KLAUE • ASSEMBLAGGIO DI BRACCIO DESTRO, ALA E ARTIGLIO • 右腕、翼、鉤爪の組み立て

D

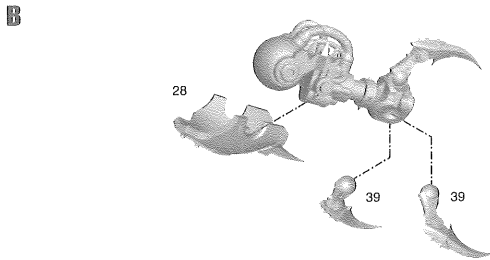
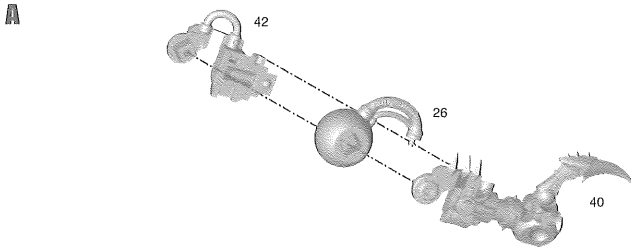


E

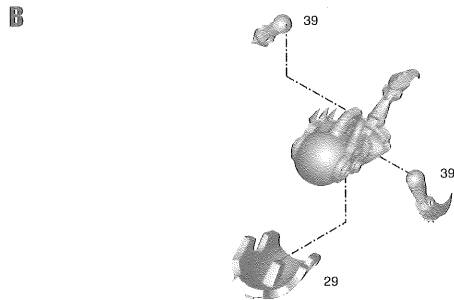
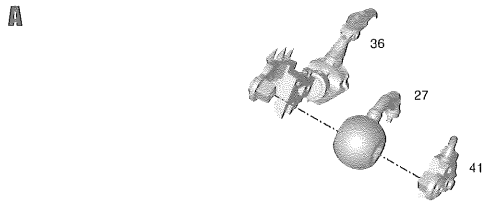




11 LEFT LEG ASSEMBLY • ASSEMBLAGE DE LA PATTE GAUCHE • MONTAJE DE LA PATA IZQUIERDA
 ZUSAMMENBAU DES LINKEN BEINS • ASSEMBLAGGIO ZAMPA SINISTRA • 左脚の組み立て



12 RIGHT LEG ASSEMBLY • ASSEMBLAGE DE LA PATTE DROITE • MONTAJE DE LA PATA DERECHA
 ZUSAMMENBAU DES RECHTEN BEINS • ASSEMBLAGGIO ZAMPA DESTRA • 右脚の組み立て



13 LEG ATTACHMENT • COLLAGE DES PATTES • SUJETA LA PIERNA
 ANBRINGEN DER BEINE • UNIONE DELLE ZAMPE • 脚の取り付け



