

Free Downloads of Build Instructions,  
Assembly Booklets & How To Guides

**BuildInstructions.com**

# BLOOD ANGELS LEGION

## THE ANGEL'S TEARS

### WITH GRENADE LAUNCHERS

*The Angel's Tears, who carry the rank and title of Erelim, the Silver Masks and the Hands of Justice, serve the IX<sup>th</sup> Legion in addition to more common Destroyers of other Legions. They take to the field of war only at the direct command of Sanguinius himself, serving as his agents on those rare occasions when the Great Angel deems an enemy worthy only of annihilation.*



**THIS IS NOT A TOY**

Not suitable for children under 15 years of age.

**WARNING:** Resin dust can be harmful if inhaled. Always wear a dust mask or respirator when sanding or sawing resin parts.

**Forge World**



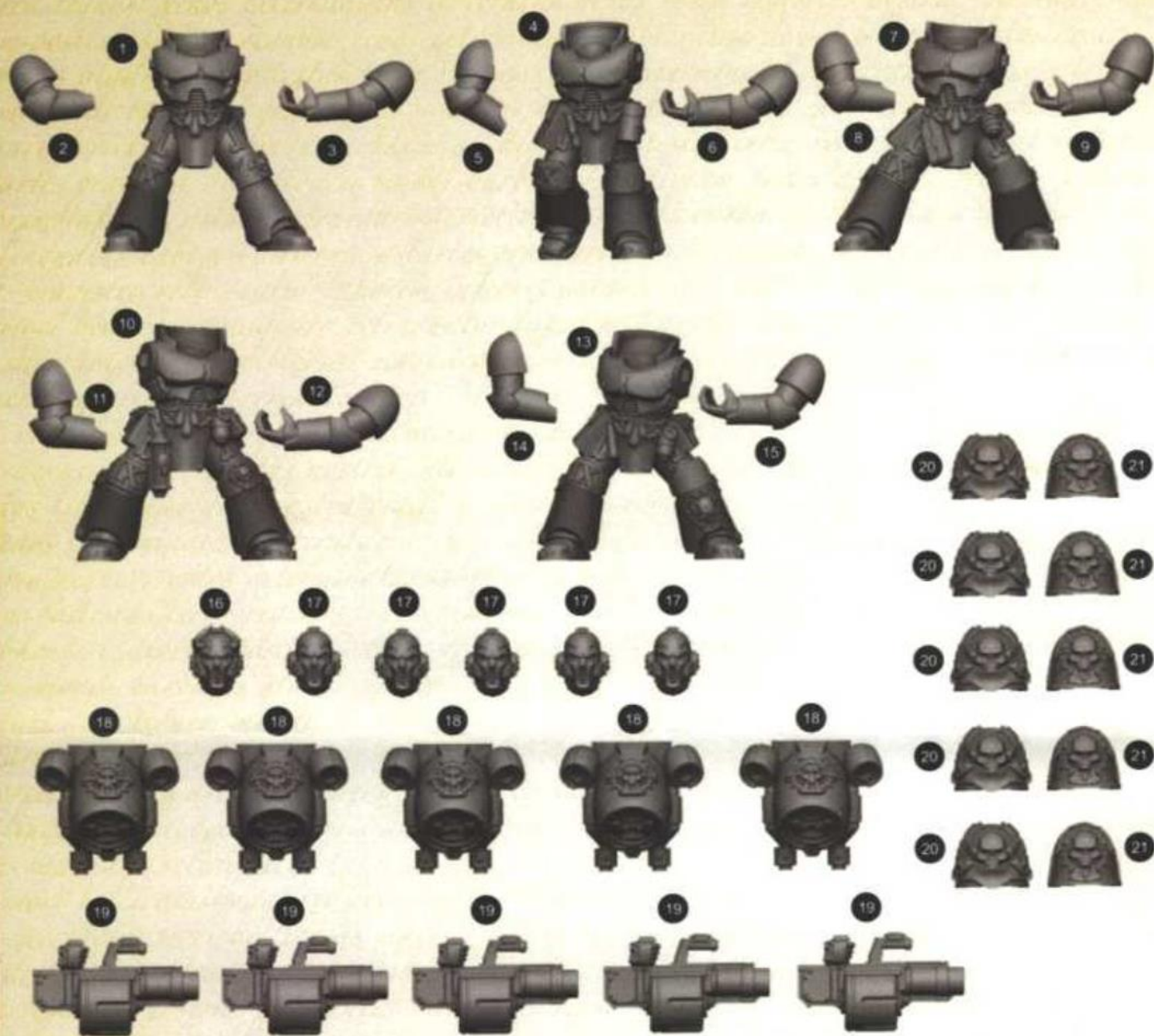
993230010010





## Resin Components

Before assembly, check that none of the components are missing.



*This set also includes five 32mm round bases.*

- |                |                 |                   |                           |
|----------------|-----------------|-------------------|---------------------------|
| 1. Torso A     | 7. Torso C      | 13. Torso E       | 19. Grenade Launcher x5   |
| 2. Right Arm A | 8. Right Arm C  | 14. Right Arm E   | 20. Right Shoulder Pad x5 |
| 3. Left Arm A  | 9. Left Arm C   | 15. Left Arm E    | 21. Left Shoulder Pad x5  |
| 4. Torso B     | 10. Torso D     | 16. Sergeant Head |                           |
| 5. Right Arm B | 11. Right Arm D | 17. Head x5       |                           |
| 6. Left Arm B  | 12. Left Arm D  | 18. Jump Pack x5  |                           |

If you need to contact the Forge World Customer Service team regarding this model, you can get in touch via email – [forgeworld@gwplc.com](mailto:forgeworld@gwplc.com) – or call:

0115 900 4995 within the UK

011 44 115 900 4995 from the USA and Canada

0011 44 115 900 4995 from Australia

00 44 115 900 4995 from Europe and the rest of the world.



## Preparing a Model for Assembly

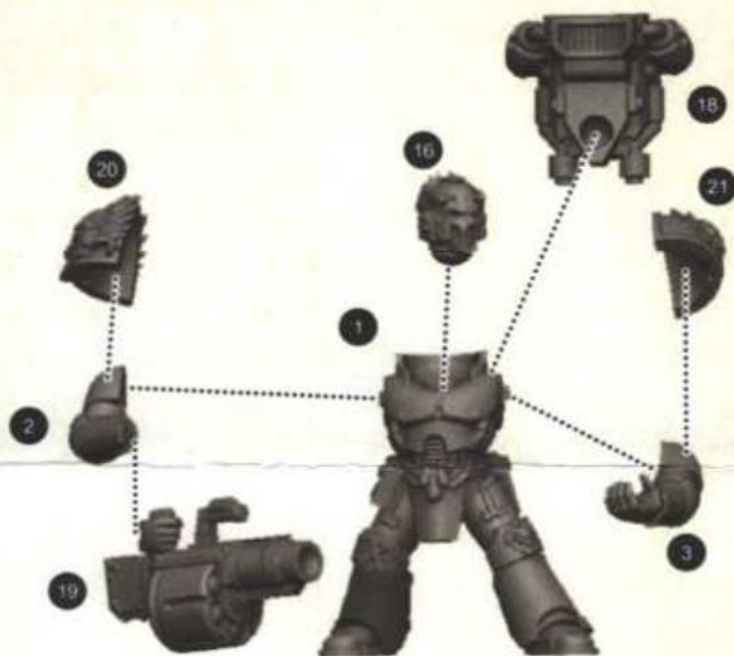
Before assembling a model, wash each part thoroughly with an abrasive brush, such as a toothbrush, to remove any model release agent that may still be on the surface of the parts. Then, remove any excess resin such as mould lines, casting gates, vents and shims.

For a more detailed guide to working with resin models, go to the Downloads section of the Forge World website.

This kit contains all of the pieces required to construct a unit of five Blood Angels Legion The Angel's Tears with Rad Grenade Launchers. To glue the resin pieces together use Citadel Super Glue.

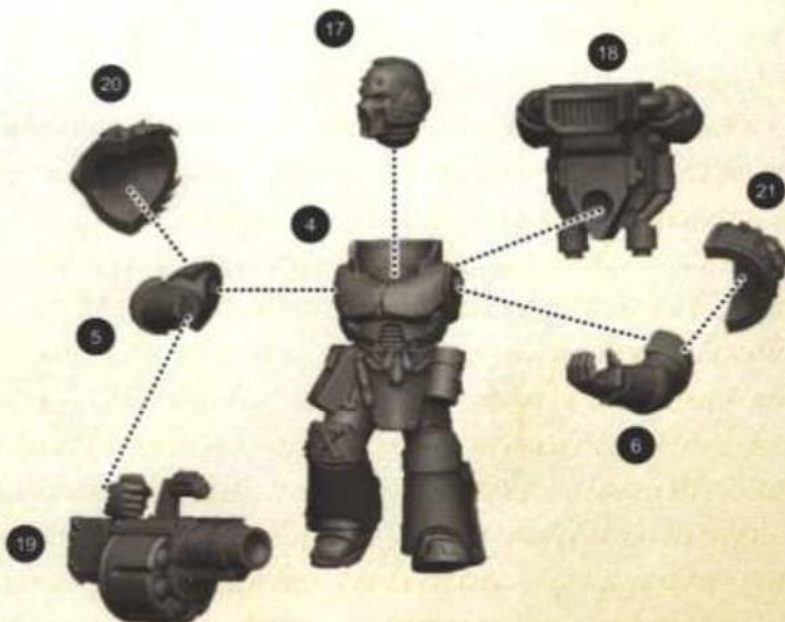
**NOTE:** We have cast this kit using advanced techniques and the best quality resin, but due to the nature of the casting process, your model may contain small air bubbles. These can be filled with model filler or super glue. Any slight warpage of thin parts can easily be corrected by immersing the part in hot tap water for about 1 minute, then carefully bending it back into shape.

### Model A



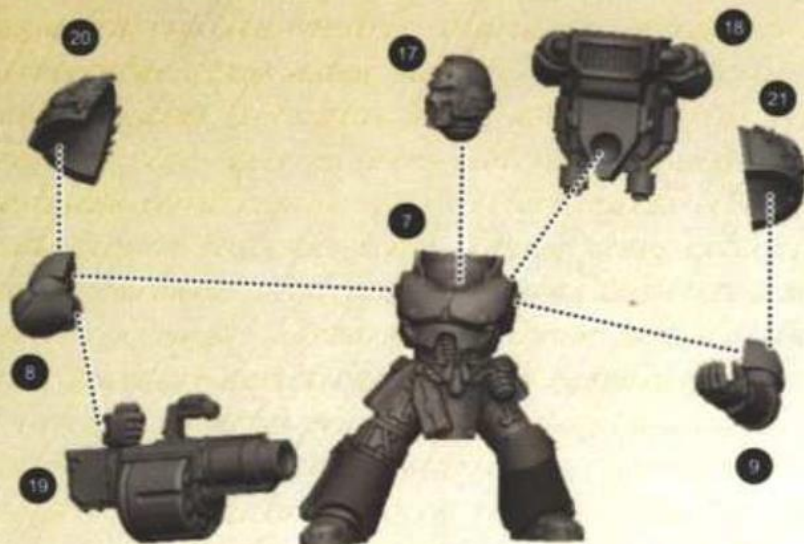
*The following images show just some of the many ways you can build these models – parts can be mixed and matched to create a variety of different poses.*

### Model B

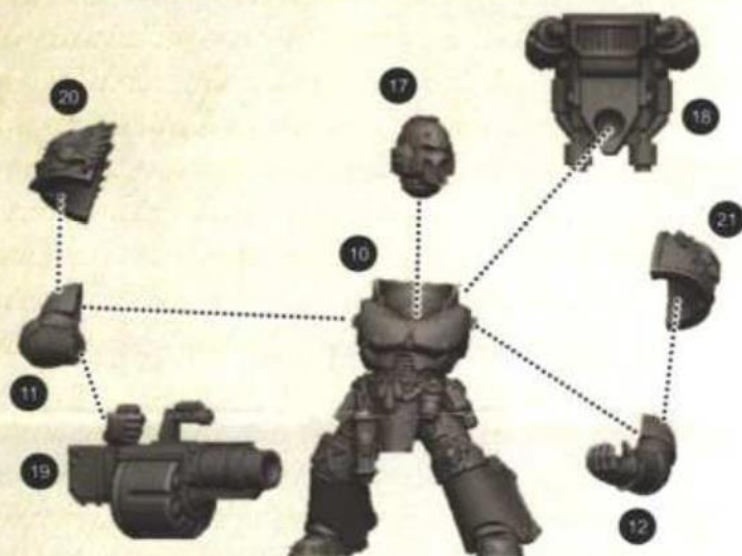




Model C



Model D



Model E

