



Free Downloads of Build Instructions,
Assembly Booklets & How To Guides

BuildInstructions.com

WARHAMMER
40,000

BATTLE SISTERS SQUAD



• READ THIS FIRST • À LIRE EN PREMIER • LEER ANTES DE MONTAR
• LIES DIES ZUERST • LEGGI PRIMA QUESTO

- BEFORE ASSEMBLING YOUR MINIATURES, PLEASE READ THROUGH THE INSTRUCTIONS IN THIS BOOKLET CAREFULLY. A pair of plastic cutters is required to remove the plastic components in this kit from their frame. We advise using a mouldline scraping tool to clean up the parts. To assemble your model you will need plastic glue.
- AVANT D'ASSEMBLER VOS FIGURINES, VEUILLEZ LIRE ATTENTIVEMENT LES INSTRUCTIONS DE CE LIVRET. Une pince coupante est requise pour détacher chaque élément de sa grappe. Nous vous recommandons l'utilisation d'un grattoir pour ébarber les éléments. Pour l'assemblage, vous aurez également besoin de colle plastique.
- POR FAVOR, LEE CUIDADOSAMENTE ESTE LIBRETO DE INSTRUCCIONES ANTES DE EMPEZAR A MONTAR LAS MINIATURAS. Te harán falta unas tenazas para plástico a fin de separar las piezas de la matriz. También aconsejamos una herramienta para rebabas a fin de limpiar cada pieza. Para montar la miniatura necesitarás pegamento para plástico.
- VOR DEM ZUSAMMENBAU DER MINIATUREN BITTE DIE ANWEISUNGEN IN DIESER ANLEITUNG AUFMERKSAM DURCHLESEN. Du benötigst einen Kunststoffseitenschneider, um die Kunststoffbauteile aus dem Gussrahmen herauszutrennen, und Kunststoffkleber, um die Miniatur zusammenzubauen. Außerdem empfehlen wir, die Bauteile vorher mit einem Gussgratentferner zu säubern.
- PRIMA DI ASSEMBLARE LE TUE MINIATURE LEGGI ATTENTAMENTE TUTTE LE ISTRUZIONI DI QUESTO LIBRETTO. Sono necessarie un paio di tronchesine per plastica per staccare i componenti dai loro sprue. Consigliamo di usare un attrezzo apposito per pulire i componenti. Per assemblare il modello avrai bisogno di colla per plastica.

• EXPLANATION OF SYMBOLS • EXPLICATION DES SYMBOLES • EXPLICACIÓN DE SÍMBOLOS
 • ERLÄUTERUNG DER SYMBOLE • LEGENDA DEI SIMBOLI



- Variant assembly
- Variante d'assemblage
- Variante de montaje
- Bauvariante
- Assemblaggio alternativo



- Choice of parts
- Choix d'éléments
- Modelos de componentes
- Auswahl an Teilen
- Scelta di componenti



- Dry fit stage before gluing
- Tester avant de coller
- Comprobar el encaje antes de pegar
- Positionierung erst ohne Klebstoff ausprobieren
- Prova a secco prima di incollare

1 **SISTER SUPERIOR**

1 a



1 b



- Choose the variant you want to build • Choisissez la variante à assembler
- Elige qué versión quieres montar • Wähle die Variante, die du bauen möchtest
- Scegli la variante che vuoi assemblare



- Power sword • Épée Énergétique
- Espada de energia • Energieschwert
- Spada potenziata



- Chainsword • Épée Tronçonneuse
- Espada sierra • Kettenschwert
- Spada a catena



- Chaplet • Chapelet • Chaplet
- Gebetschnur • Monile

1 b



1 a



1 a



1 a

1 c



157



158



159



146



104



105



106



108



107

- Boltgun
- Bolter
- Bólter
- Bolter
- Fucile requiem

- Bolt pistol
- Pistolet bolter
- Pistola bólter
- Boltpistole
- Pistola requiem

- Plasma pistol
- Pistolet à Plasma
- Pistola de plasma
- Plasmapistole
- Pistola plasma

- Condemnor boltgun
- Bolter Condemnor
- Bólter condenación
- Condemnor-Bolter
- Fucile requiem condemnor



109

- Boltgun • Bolter
- Bólter • Bolter
- Fucile requiem



110



111



112



- Combi-flamer
- Combi-lance-flammes
- Combi-lanzallamas
- Kombi-Flammenwerfer
- Combifiamma

- Combi-plasma
- Combi-plasma
- Combi-plasma
- Kombi-Plasmawerfer
- Combiplasma

- Combi-melta
- Combi-fuseur
- Combi-fusión
- Kombi-Melter
- Combitermico



2

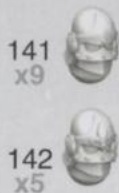


• Interchangeable parts • Éléments interchangeables • Partes intercambiables
• Austauschbare Teile • Componenti intercambiabili

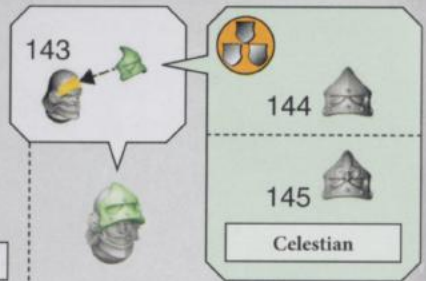
2 a



2 b

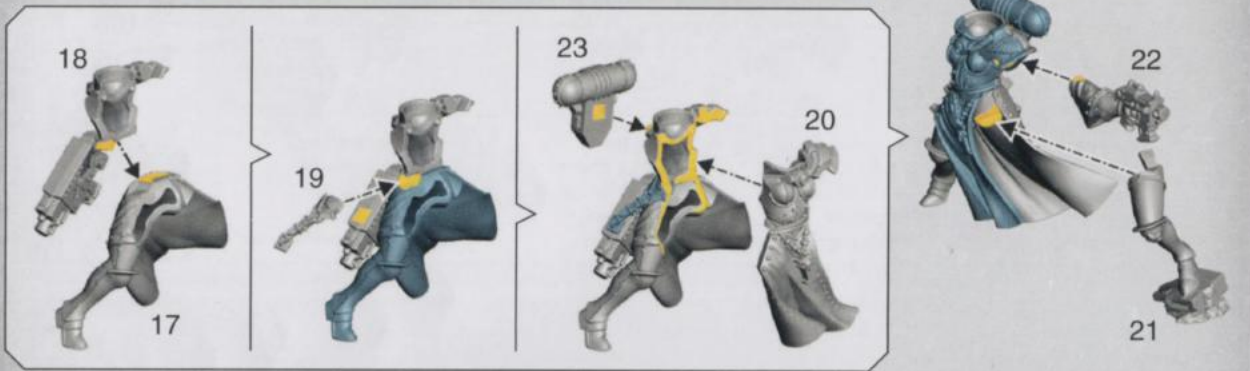


Celestian



3 a

Battle Sister A



3 b



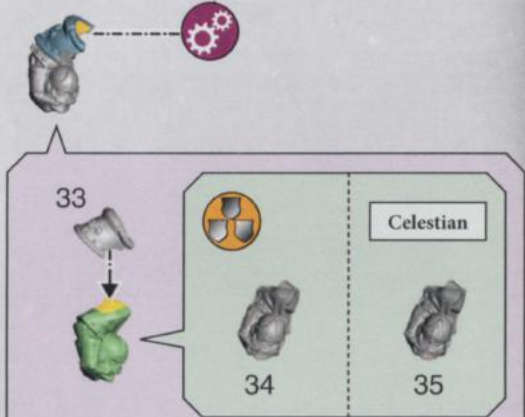
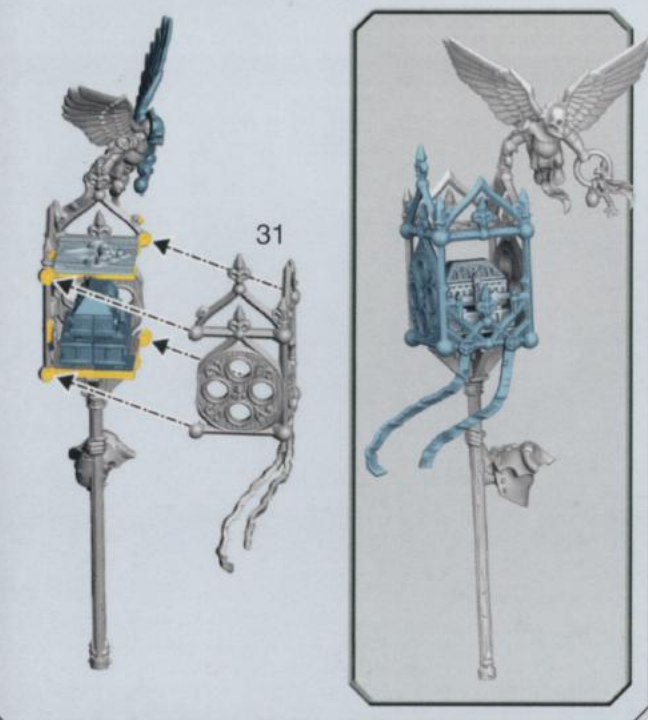
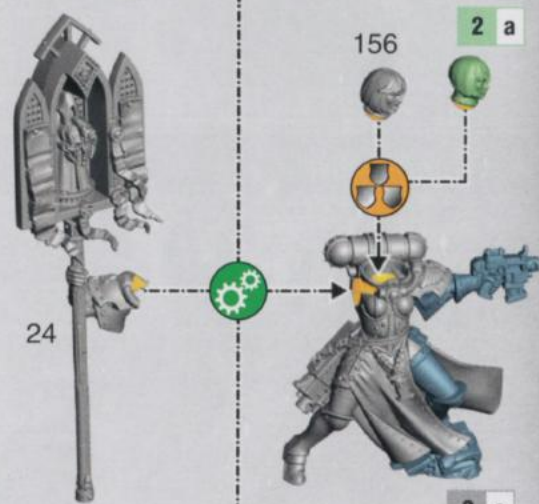
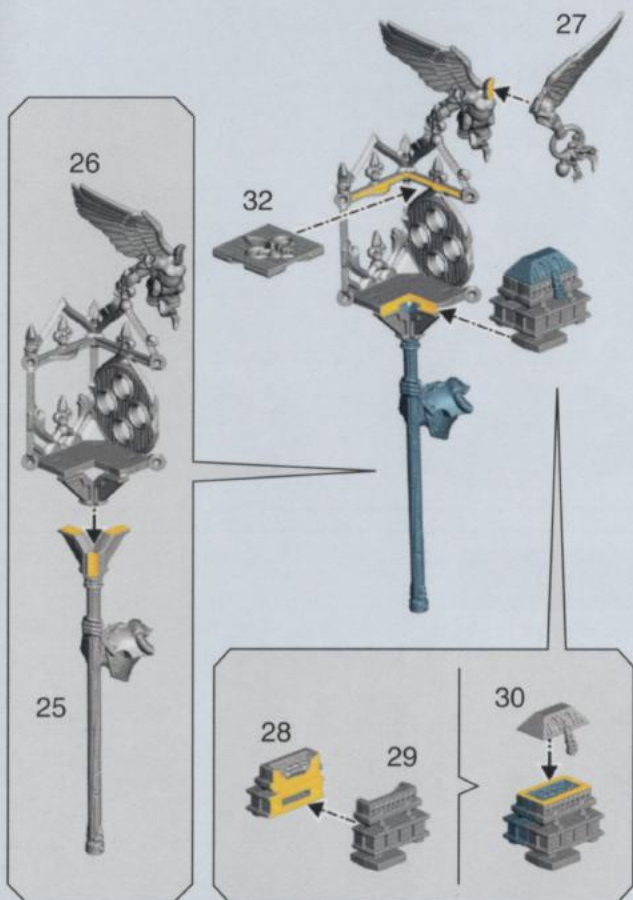
• Choose the variant you want to build • Choisissez la variante à assembler
• Elige qué versión quieres montar • Wähle die Variante, die du bauen möchtest
• Scegli la variante che vuoi assemblare

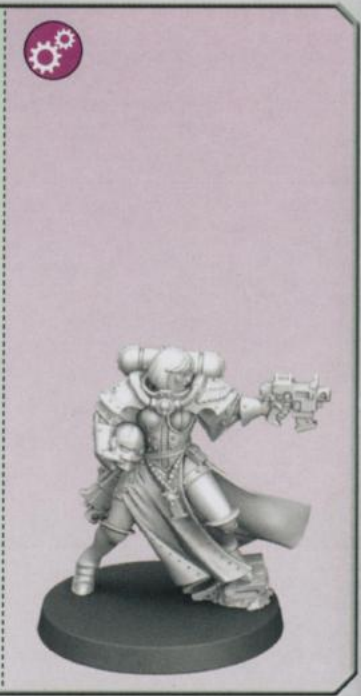


• Simulacrum Imperialis • Simulacrum Imperialis • Simulacrum Imperialis
• Simulacrum Imperialis • Simulacrum Imperialis



- Simulacrum Imperialis • Simulacrum Imperialis
- Simulacrum Imperialis • Simulacrum Imperialis
- Simulacrum Imperialis





4 a Battle Sister B



Ø 32mm



- Choose the variant you want to build
- Choisissez la variante à assembler
- Elige qué versión quieres montar
- Wähle die variante, die du bauen Möchtest
- Scegli la variante che vuoi assemblare

4 b



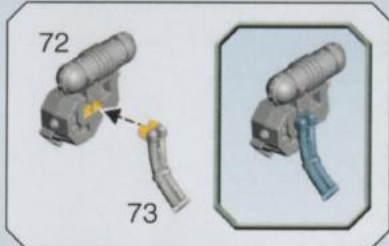
- Heavy bolter • Bolter lourd
- Bólter pesado • Schwerer Bolter
- Requiem pesante

4 c

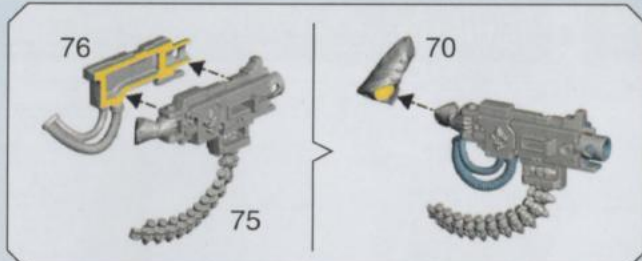


- Grenade & Boltgun • Grenade & Bolter
- Granada y bólter • Granate & Bolter
- Granata e fucile requiem

4 b



4 a



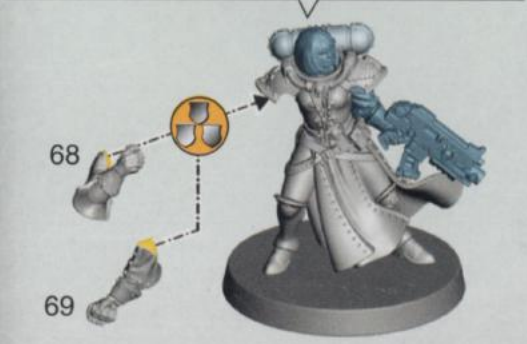
4 c



4 a



- Heavy bolter
- Bolter lourd
- Bólter pesado
- Schwerer Bolter
- Requiem pesante



5 a Battle Sister C



- Choose the variant you want to build
- Choisissez la variante à assembler
- Elige qué versión quieres montar
- Wähle die Variante, die du bauen möchtest
- Scegli la variante che vuoi assemblare

5 b



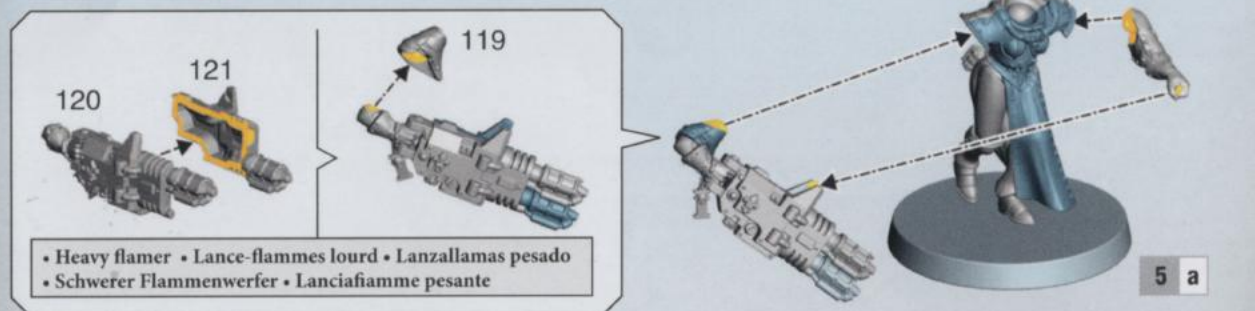
- Heavy flamer • Lance-flammes lourd
- Lanzallamas pesado
- Schwere Flammenwerfer • Lanciamfiamme pesante

5 c



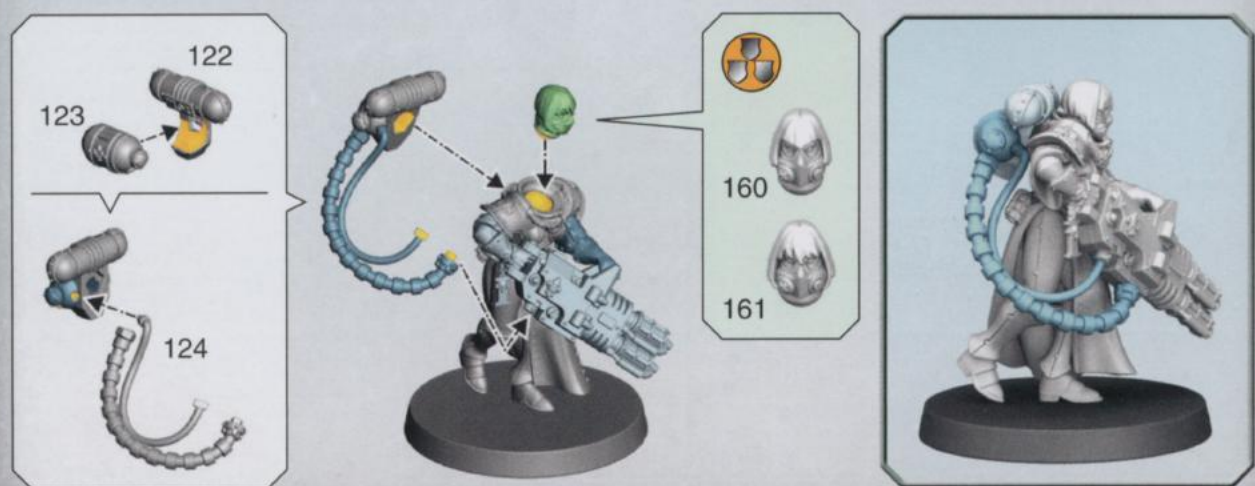
- Boltgun • Bolter • Bólter
- Bolter • Fucile requiem

5 b



- Heavy flamer • Lance-flammes lourd • Lanzallamas pesado
- Schwere Flammenwerfer • Lanciamfiamme pesante

5 a



160

161

5 c



5 a



6 a Battle Sister D



11



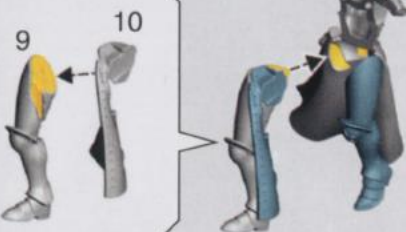
6 b



- Boltgun • Bolter • Bólter
- Bolter • Fucile termico



6 a



9



6 c

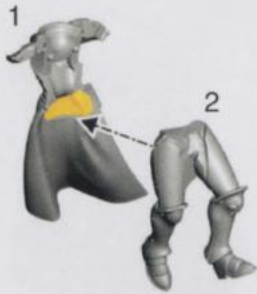


6 b

Ø 32mm



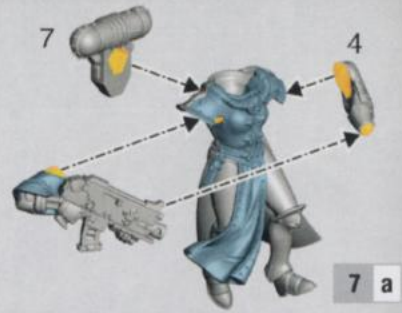
7 a Battle Sister E



7 b



- Boltgun • Bolter • Bólter • Bolter
- Fucile termico



7 a

7 c



Ø
32mm



8 a Battle Sister F



8 b



8 a

Ø
32mm

8 c



8 b



44



47



48



45

46

- Boltgun • Bolter • Bólter
- Bolter • Fucile requiem

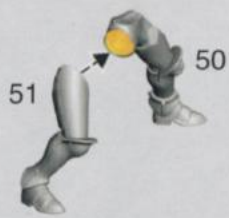
- Meltagun • Fuseur
- Rifle de fusión • Melter
- Fucile termico

- Flamer • Lance-flammes
- Lanzallamas
- Flammenwerfer
- Lanciafiamme

- Storm bolter
- Bolter Storm
- Bólter tormenta
- Sturmbolter
- Requiem tempesta



9 a Battle Sister G



9 b



Ø
32mm

9 c



2



9 b



56



59



60



57

• Boltgun • Bolter • Bólter
• Bolter • Fucile requiem

• Meltagun • Fuseur
• Rifle de fusión • Melter
• Fucile termico

• Flamer • Lance-flammes
• Lanzallamas
• Flammenwerfer
• Lanciamiamme

• Storm bolter
• Bolter Storm
• Bólter tormenta
• Sturmbolter
• Requiem tempesta

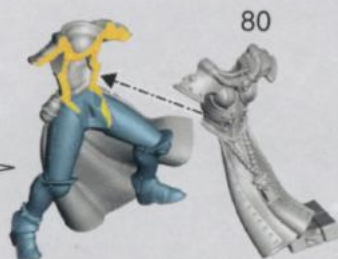
57



58



10 a Battle Sister H



10 b



10 a

10 c



2

10 b



Ø
32mm



84



87



88



• Boltgun • Bolter • Bólter
• Bolter • Fucile requiem

• Meltagun • Fuseur
• Rifle de fusión • Melter
• Fucile termico

• Flamer • Lance-flammes
• Lanzallamas
• Flammenwerfer
• Lanciafiamme

• Storm bolter
• Bolter Storm
• Bólter tormenta
• Sturmbolter
• Requiem tempesta

85



86



11 a Battle Sister I

11 b



129

130

131



128



132



135

134

133

11 a

11 c



2

11 b



Ø
32mm



136



139



140



• Boltgun • Bolter • Bólter
• Bolter • Fucile requiem

• Meltagun • Fuseur
• Rifle de fusión • Melter
• Fucile termico

• Flamer • Lance-flammes
• Lanzallamas
• Flammenwerfer
• Lanciafiamme

• Storm bolter
• Bolter Storm
• Bólter tormenta
• Sturmbolter
• Requiem tempesta

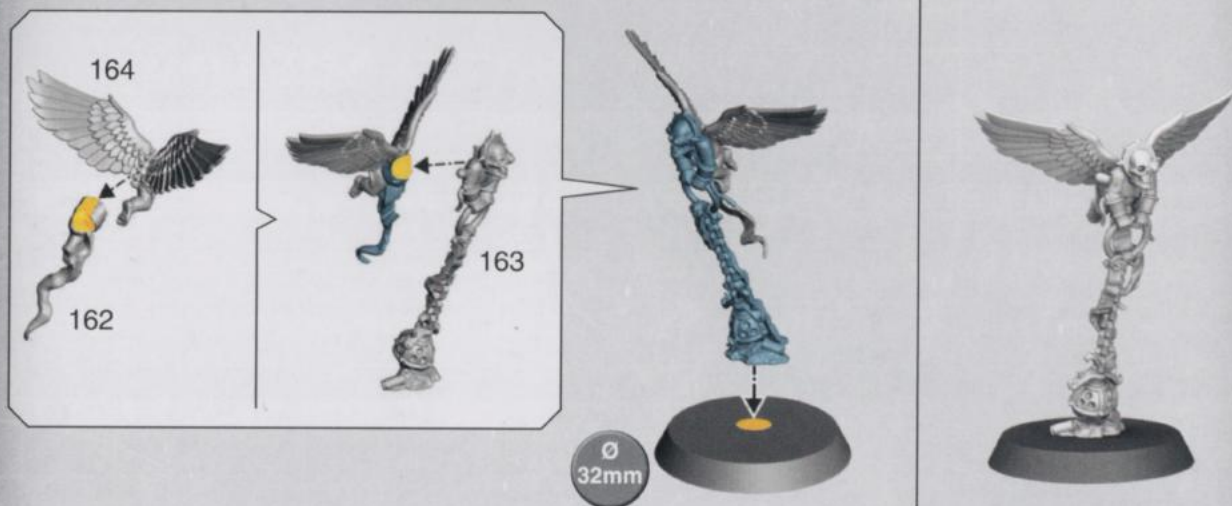
137



138



12 Incensor Cherub



13



BATTLE SISTERS SQUAD





BASE RETRIBUTOR ARMOUR
SHADE REIKLAND FLESHSHADE
LAYER LIBERATOR GOLD
LAYER STORMHOST SILVER

BASE LEADBELCHER
SHADE AGRAX EARTHSHADE GLOSS
LAYER STORMHOST SILVER

BASE BUGMAN'S GLOW
SHADE REIKLAND FLESHSHADE
LAYER KISLEV FLESH
LAYER PLAYED ONE FLESH

BASE MEPHISTON RED
SHADE CARROBURG CRIMSON
LAYER EVIL SUNZ SCARLET
LAYER WHITE SCAR

BASE ABADDON BLACK
LAYER DARK REAPER
LAYER THUNDERHAWK BLUE
LAYER ULTHUAN GREY



1

ADEPTA SORORITAS	
WITTE SISTERS / CYCLESBANE / CANNONERS / RETRIBUTORS / SKARPAK / REPENTIA SUPERNIX	
ORDER OF OUR BATTERED LADY	[Grid of red skull icons]
ORDER OF THE BLOODY CHalice	[Grid of red skull icons]
ORDER OF THE BLOODY ROSE	[Grid of red rose icons]
ORDER OF THE SACRED ROSE	[Grid of white rose icons]
ORDER OF THE ARGENT SHROUD	[Grid of black skull icons]
ORDER OF THE UNBROKEN HEART	[Grid of red skull icons]

SISTER SUPERNIX			
Rep 0/0	Ther 0/0	Galax 0/0	1/0/0/0
Rep 1/0	Ther 1/0	Galax 1/0	1/0/0/0
Rep 1/1	Ther 1/1	Galax 1/1	1/0/0/0
Rep 1/0	Ther 1/0	Galax 1/0	1/0/0/0
Rep 1/1	Ther 1/1	Galax 1/1	1/0/0/0



1

2

COMPONENT CODE: 99530108023 © Games Workshop 2019



games-workshop.com
 Games Workshop Limited, Willow Road,
 Nottingham, NG7 2WS, UK
 © Copyright Games Workshop Limited 2020.

