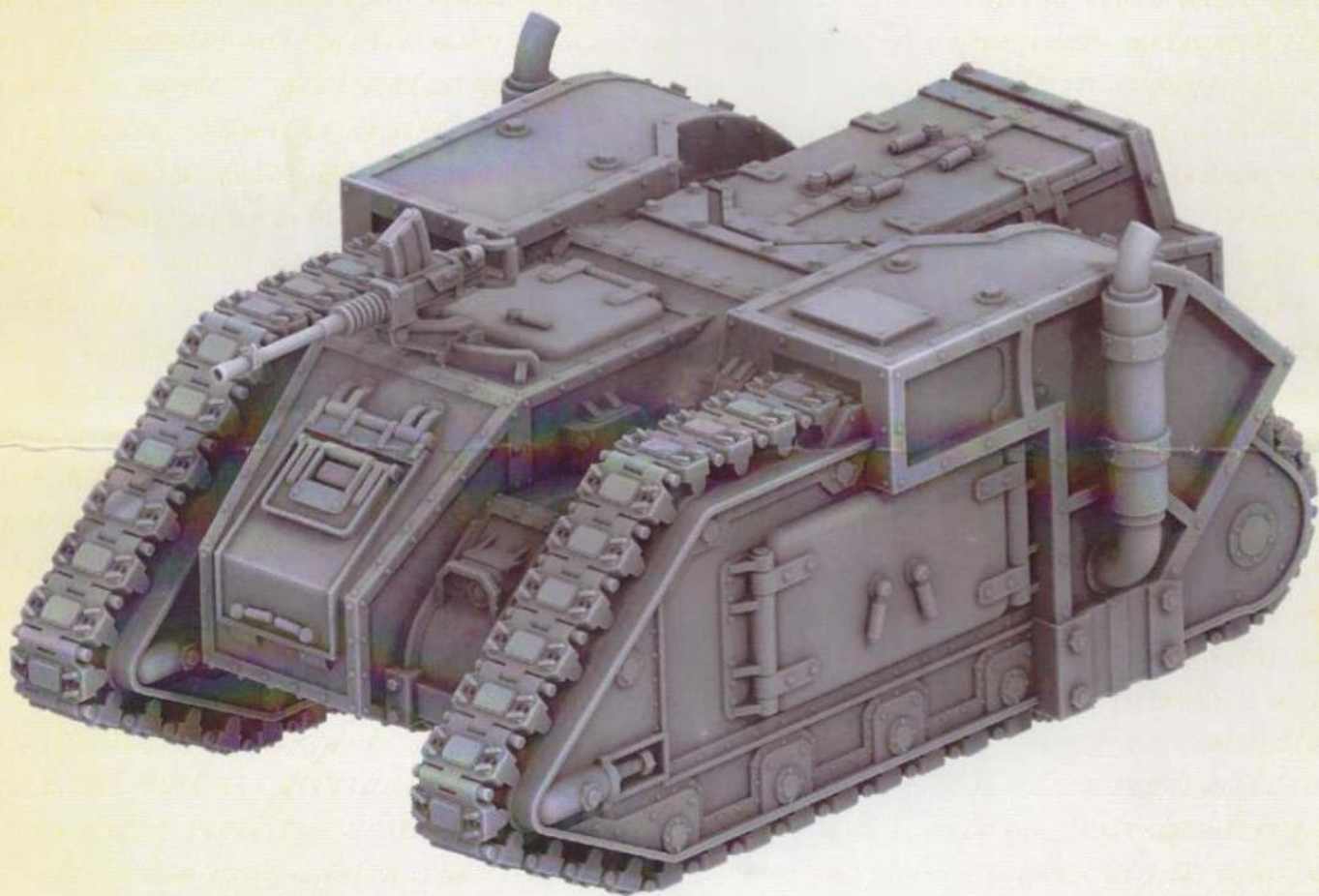


Free Downloads of Build Instructions,  
Assembly Booklets & How To Guides

**BuildInstructions.com**

# AUROX ARMoured TRANSPORT

*The Aurox Armoured Transport is an armoured troop carrier, primarily used by the veteran grenadier units of the Imperialis Militia, or for the protection of commanders while they dictate the course of battle. A further variant of the Aurox is used by the Solar Auxilia, which is re-fitted for combat in extreme environmental conditions.*



THIS IS NOT A TOY

Not suitable for children under 15 years of age.

WARNING: Resin dust can be harmful if inhaled. Always wear a dust mask or respirator when sanding or sawing resin parts.

[www.forgeworld.co.uk](http://www.forgeworld.co.uk)



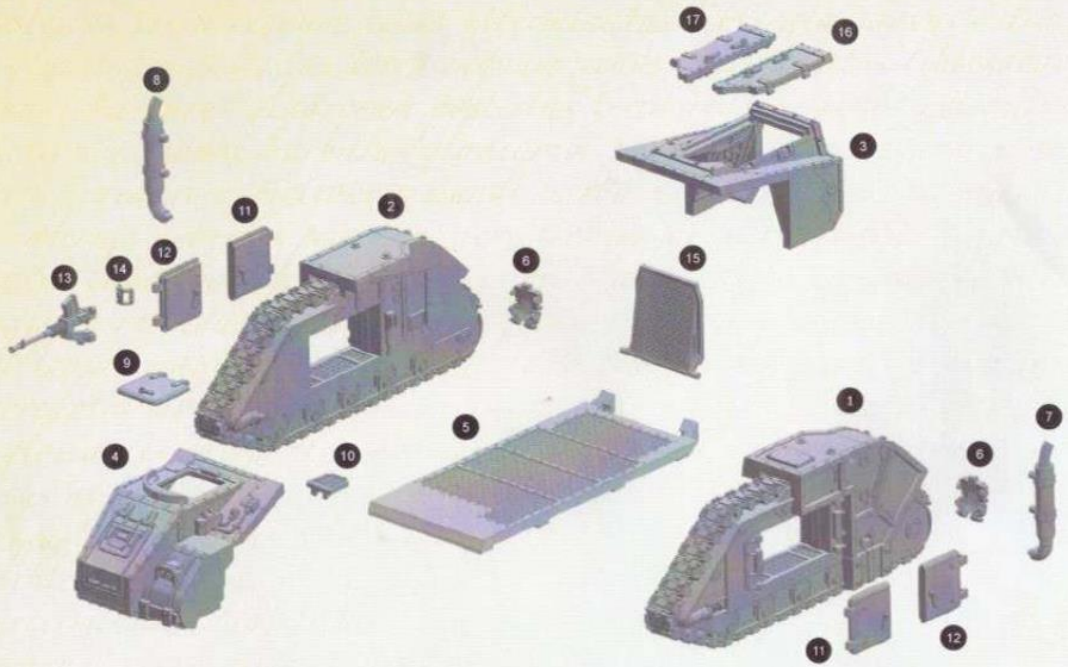
993201050038



# Components

Before assembly, check that none of the components are missing.

1. Left Track Unit
2. Right Track Unit
3. Hull Rear
4. Hull Front
5. Floor
6. Track Links x2
7. Left Exhaust
8. Right Exhaust
9. Driver's Hatch
10. Gunner Step
11. Left Door x2
12. Right Door x2
13. Heavy Stubber
14. Heavy Stubber Grip
15. Rear Door
16. Left Top Hatch
17. Right Top Hatch



## Assembly Legend

Parts for Assembly



Glue Contact Area



Note



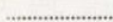
Reverse Angle



Do Not Glue



Insert



Component Highlight



## Preparing the Model for Assembly

Before assembling the model, wash each part thoroughly with an abrasive brush, such as a toothbrush, to remove any model release agent that may still be on the surface of the parts. Then, remove any excess resin such as mould lines, casting gates, vents and shims. For a more detailed guide to working with resin models, go to the Downloads section of the Forge World website.

This kit contains all the pieces required to construct an Aurox Armoured Transport. To glue the resin pieces together, use Citadel Super Glue.

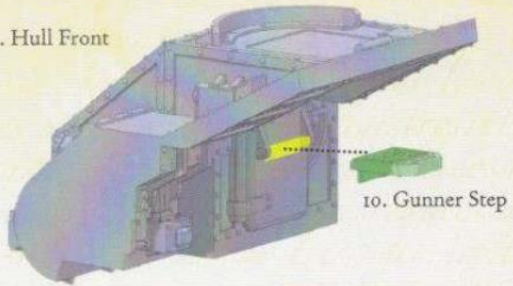
**NOTE:** We have cast this kit using advanced techniques and the best quality resin, but due to the nature of the casting process, your model may contain small air bubbles. These can easily be filled with model filler or super glue. Any slight warpage of thin parts can be corrected by immersing the part in hot tap water for about 1 minute, then carefully bending it back into shape.

If you need to contact the Forge World Customer Service team regarding this model, you can get in touch via email - [forgeworld@gwplc.com](mailto:forgeworld@gwplc.com) - or call:  
0115 900 4995 within the UK  
011 44 115 900 4995 from the USA and Canada  
0011 44 115 900 4995 from Australia  
00 44 115 900 4995 from Europe and the rest of the world.

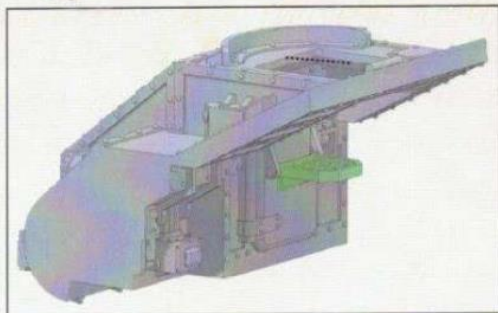
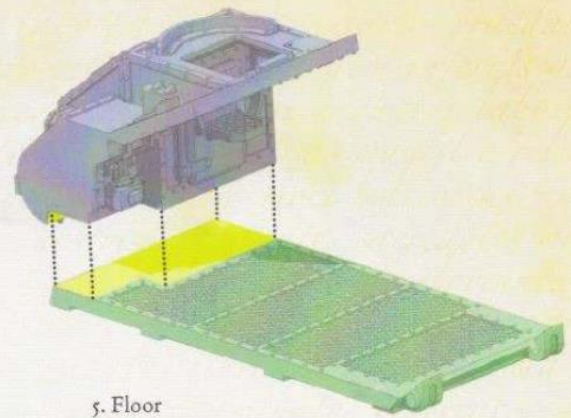


I

4. Hull Front



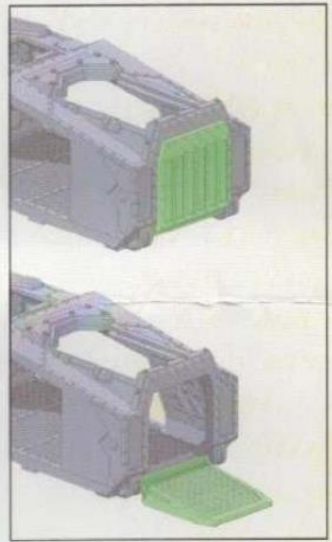
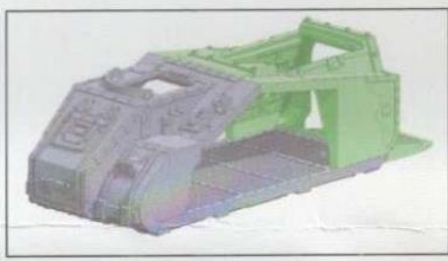
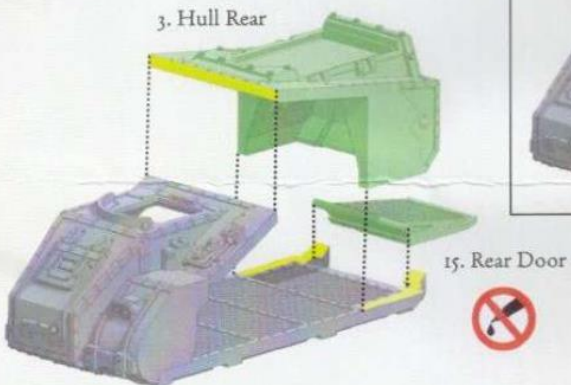
2



5. Floor

3

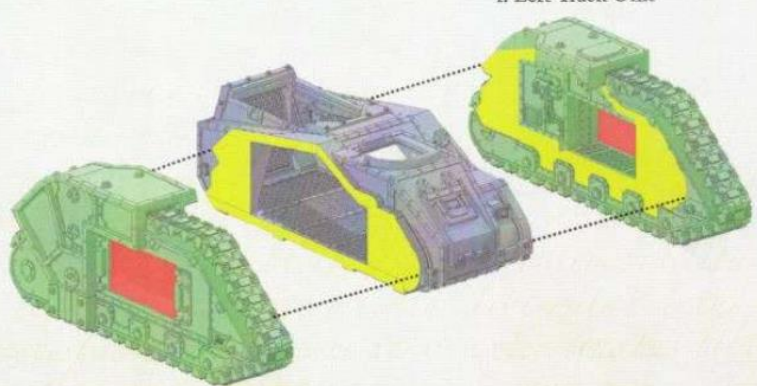
3. Hull Rear



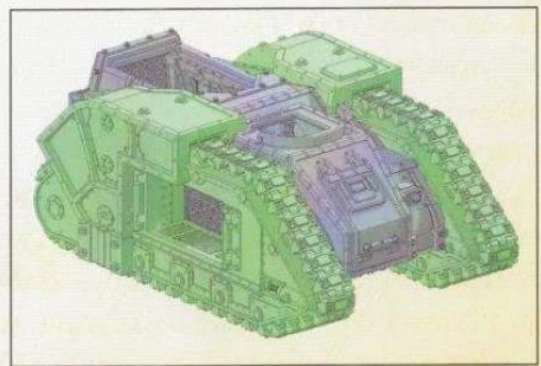
Make sure 15. Rear Door is in place before you glue 3. Hull Rear. Take care to avoid getting glue on 15. Rear Door to allow the door to open and close. If you plan to paint the interior, it will be easiest to do so before completing this step.

4

1. Left Track Unit

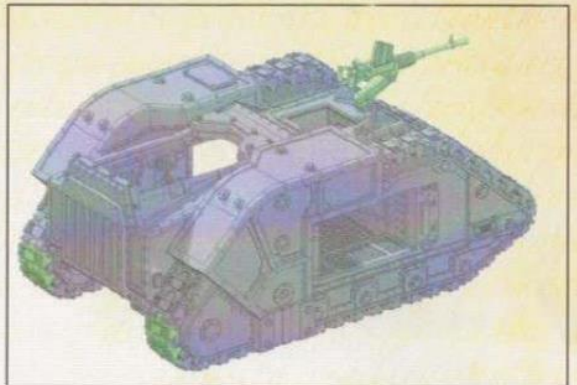
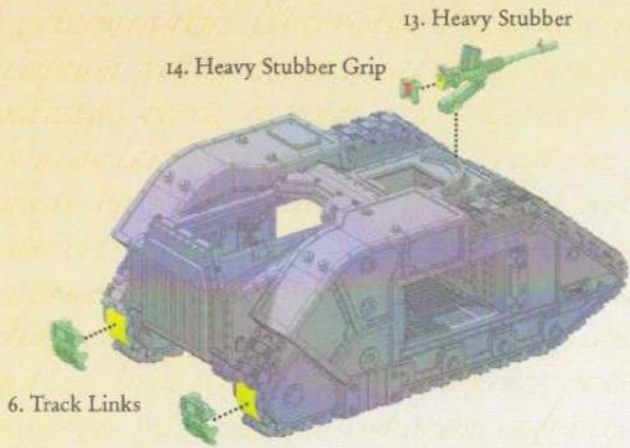


2. Right Track Unit

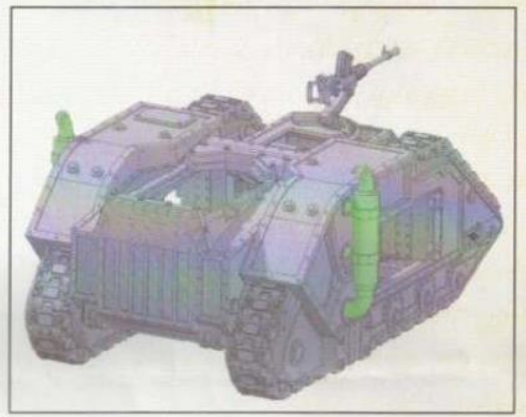
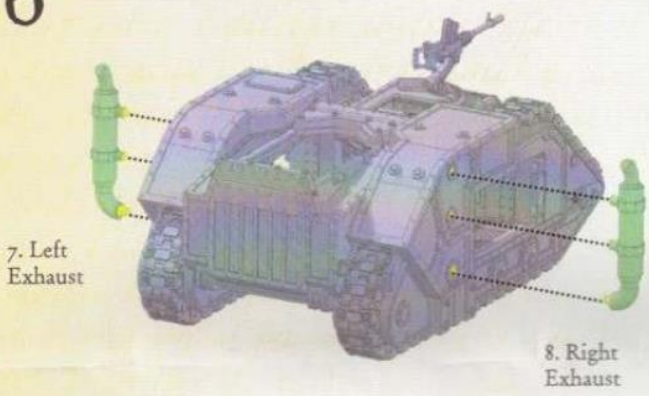




5



6



7

