

Free Downloads of Build Instructions,
Assembly Booklets & How To Guides

BuildInstructions.com

ADEPTUS TITANICUS™



QUESTORIS KNIGHTS



ADEPTUS TITANICUS™

QUESTORIS KNIGHTS

EXPLANATION OF SYMBOLS • EXPLICATION DES SYMBOLES • EXPLICACIÓN DE SIMBOLOS • ERLÄUTERUNG DER SYMBOLE • LEGENDA DEI SIMBOLI



Special instruction - Please read
Instrucciones especiales - Lire attentivement
Instrucción especial - Por favor, lea
Besondere Anweisung - Bitte lesen
Istruzioni speciali - Leggi attentamente



Stage complete
Étape terminée
Paso completado
Schritt abgeschlossen
Fase completa



Detail view
Vue détaillée
Vista detallada
Alternative Ansicht
Visuale del dettaglio



Variant assembly
Variante d'assemblage
Variante de montaje
Bauvariante
Assemblaggio alternativo



Repeat process
Répéter l'étape
Repetir pasos
Vorgang wiederholen
Ripeti il processo



READ THIS FIRST: Before assembling your model kit, please read through the instructions in this booklet carefully. A pair of plastic cutters is required to remove the plastic components in this kit from their frame. We advise using a mouldline scraping tool to clean up the parts. To assemble your model you will need plastic glue. Games Workshop sells Citadel Fine Detail Cutters, Citadel Mouldline Removers and Citadel Plastic Glue, but does not recommend these products for use by children under the age of 16 without adult supervision.

À LIRE EN PREMIER : Avant de vous lancer dans l'assemblage de ce kit, veuillez lire attentivement les instructions de ce livret. Une pince coupante est requise pour détacher chaque élément de sa grappe. Nous vous recommandons l'utilisation d'un grattoir pour ébarber les éléments. Pour l'assemblage, vous aurez également besoin de colle plastique. Games Workshop commercialise les Pinces de Précision Citadel, l'Ebarboir Citadel et la Colle Plastique Citadel, mais n'en recommande pas l'utilisation pour des enfants de moins de 16 ans sans la supervision d'un adulte.

LEER ANTES DE MONTAR: Antes de montar el contenido de este kit, lee estas instrucciones cuidadosamente. Te harán falta unas tenazas para plástico a fin de separar las piezas de la matriz. También aconsejamos una herramienta para rebabas a fin de limpiar cada pieza. Para montar la miniatura necesitarás pegamento para plástico. Games Workshop vende Tenazas Citadel, Herramientas para rebabas Citadel y Pegamento para plástico Citadel, pero no recomienda estos productos a menores de 16 años sin la supervisión de un adulto.

LIES DIES ZUERST: Bitte lies diese Anleitung sorgfältig, bevor du mit dem Zusammenbau deines Modells beginnst. Du benötigst einen Kunststoffseitenschneider, um die Kunststoffbauteile aus dem Gussrahmen herauszutrennen, und Kunststoffkleber, um die Miniatur zusammenzubauen. Außerdem empfehlen wir, die Bauteile vorher mit einem Gussgratentferner zu säubern. Games Workshop bietet Präzisions-Kunststoffseitenschneider von Citadel sowie Citadel-Kunststoffkleber an, empfiehlt aber, dass Kinder unter 16 Jahren diese nur unter Aufsicht eines Erwachsenen benutzen.

LEGGI PRIMA QUESTO: prima di assemblare il tuo modello, leggi le istruzioni di questo libretto con attenzione. Sono necessarie un paio di tronchesine per plastica per staccare i componenti dai loro sprue. Consigliamo di usare un attrezzo apposito per pulire i componenti. Per assemblare il modello avrai bisogno di colla per plastica. Games Workshop vende Tronchesine di precisione Citadel, Attrezzo per ripulire Citadel e Colla per plastica Citadel, ma non consiglia questi prodotti ad un pubblico minore di 16 anni senza la supervisione di un adulto.

16+



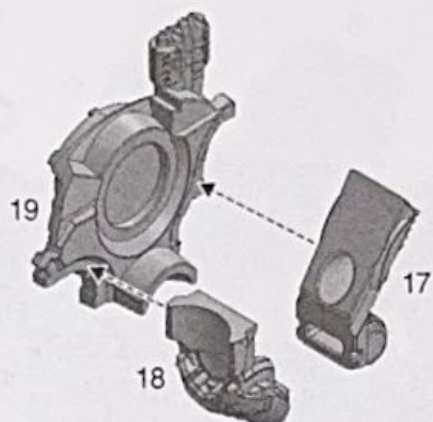
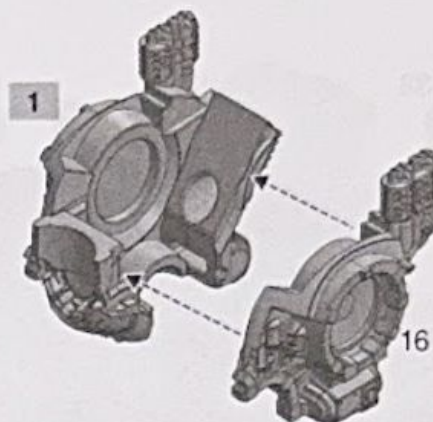
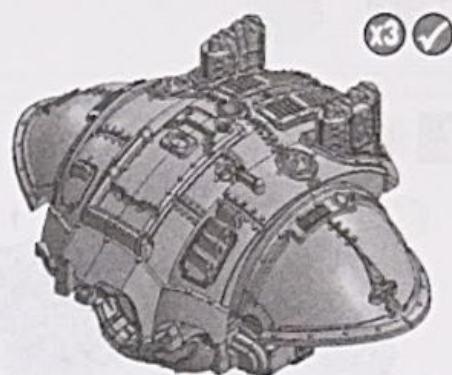
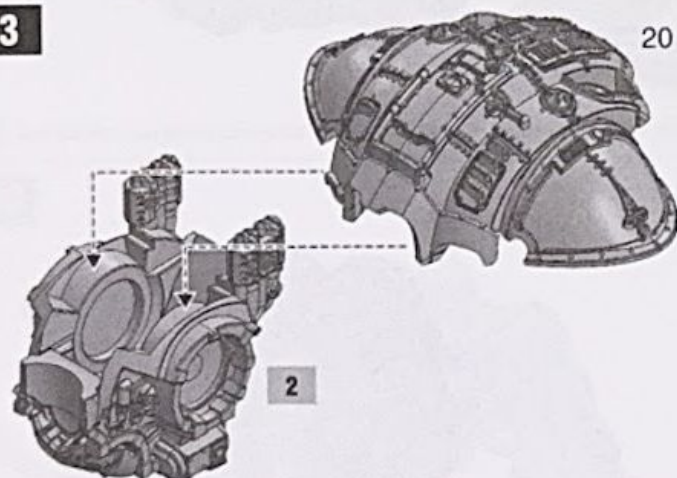
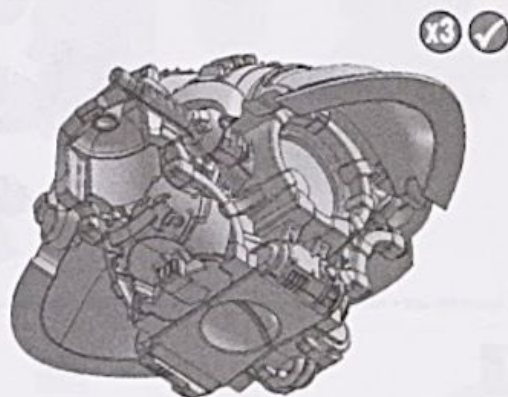
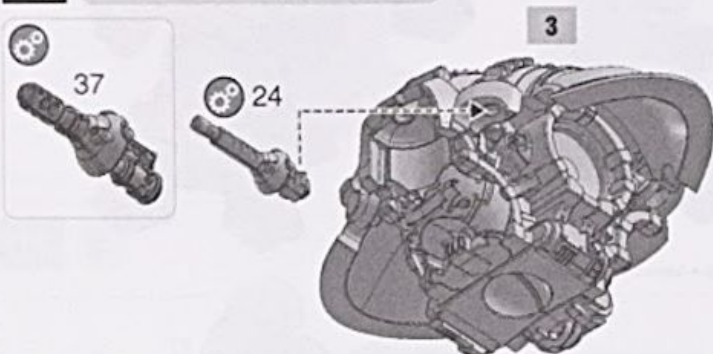
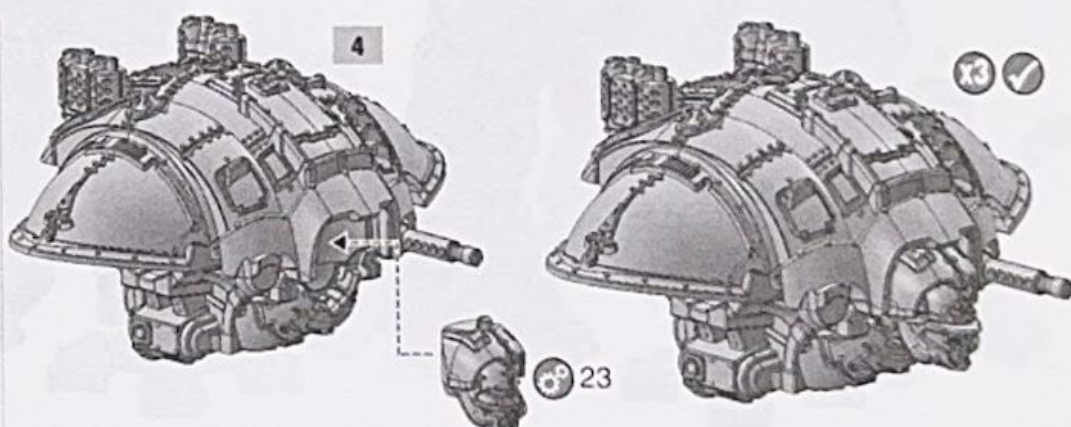
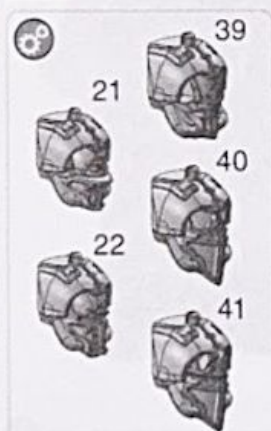
- Citadel plastic glue
- Colle plastique Citadel
- Pegamento para plástico
- Citadel-Kunststoffkleber
- Colla per plastica Citadel

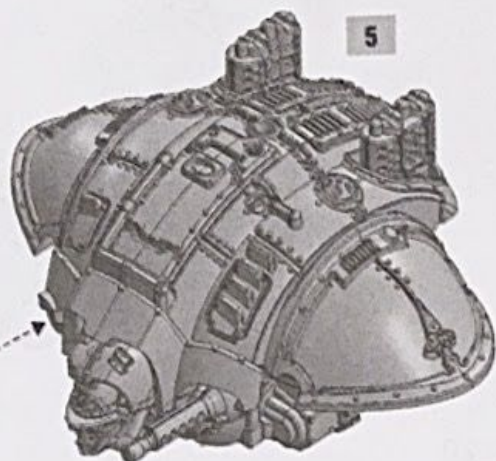
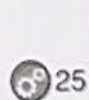
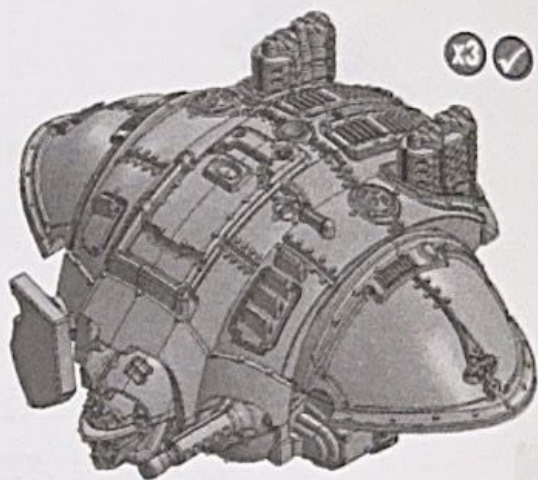
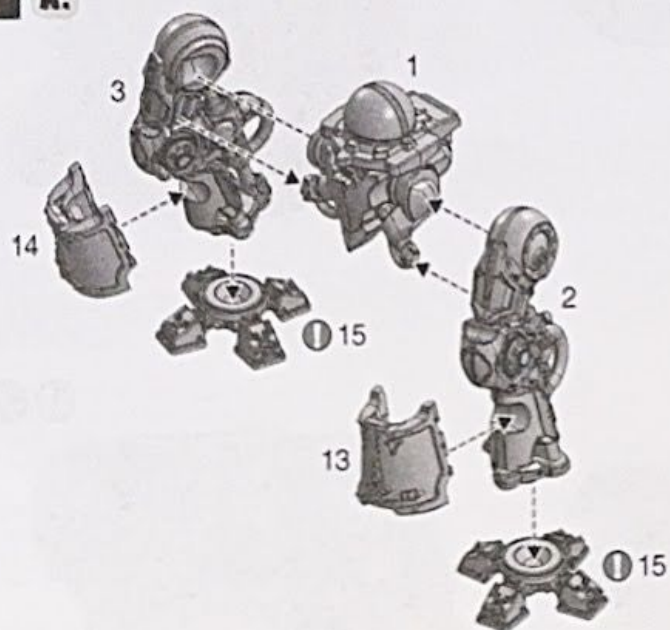


- Citadel fine detail cutters
- Pinces de précision Citadel
- Tenazas Citadel
- Citadel-Seitenschneider
- Tronchesine di precisione Citadel

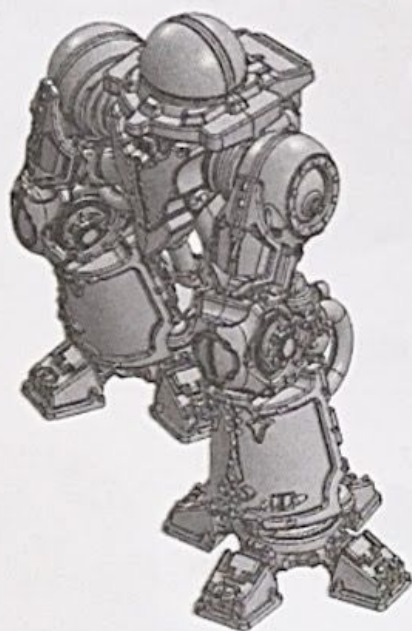


- Citadel mouldline remover
- Ebarboir Citadel
- Herramienta para rebabas Citadel
- Gussgratentferner
- Attrezzo per ripulire Citadel

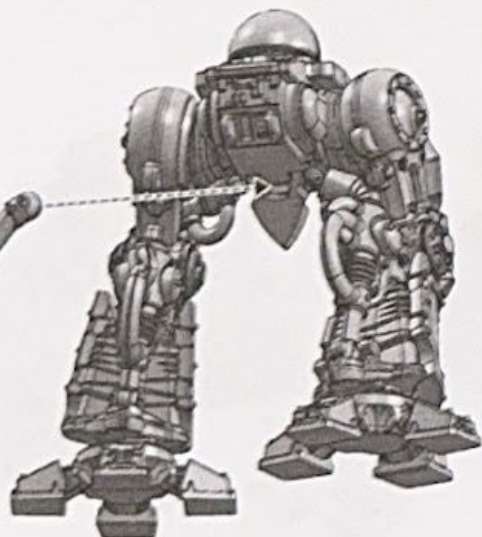
1**2****3****4****MELTAGUN / HEAVY STUBBER****5****x3** ✓

6**5****x3** ✓**7 A.**

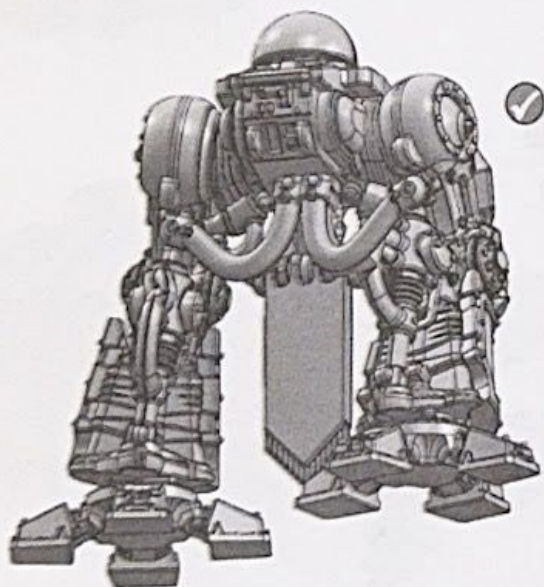
✓

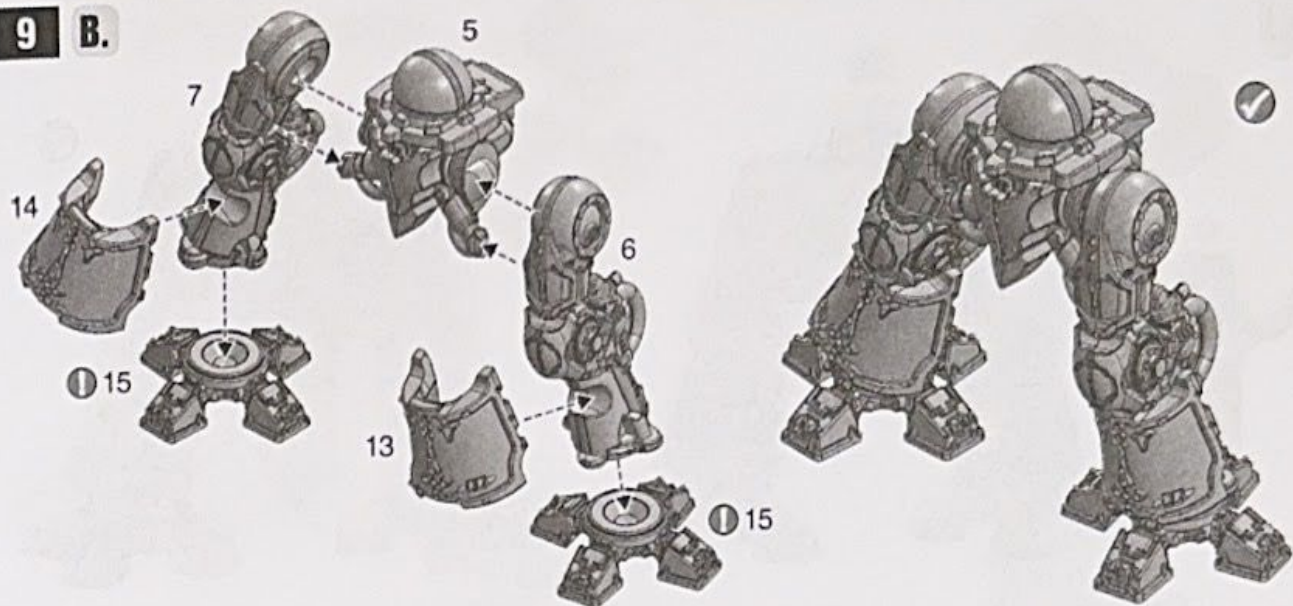


① Assemble last • Assembler en dernier • Montar ultimo • Baue dies zuletzt zusammen • Assembla per ultimo

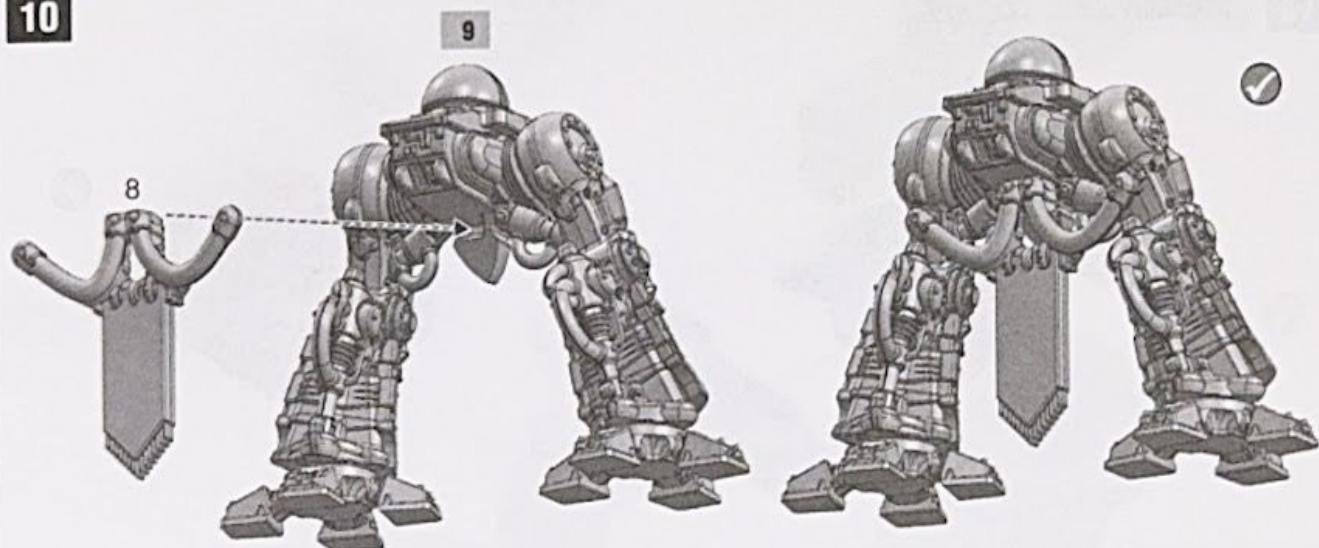
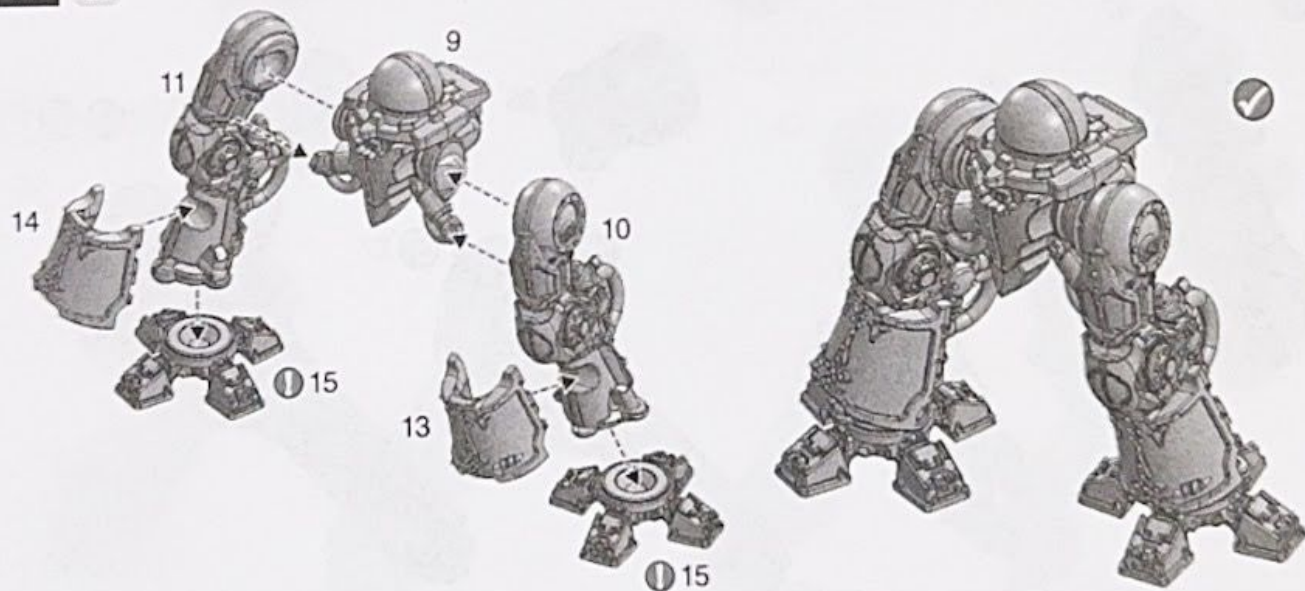
8**7**

✓



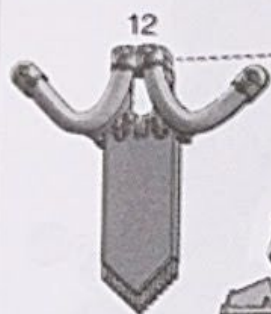
9 B.

① Assemble last • Assembler en dernier • Montar último • Baue dies zuletzt zusammen • Assembla per ultimo

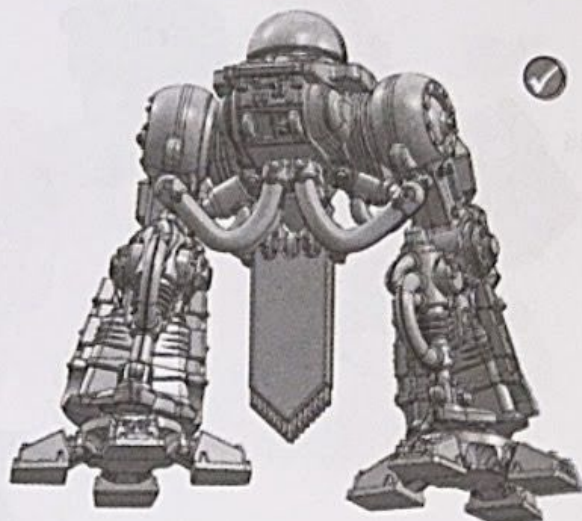
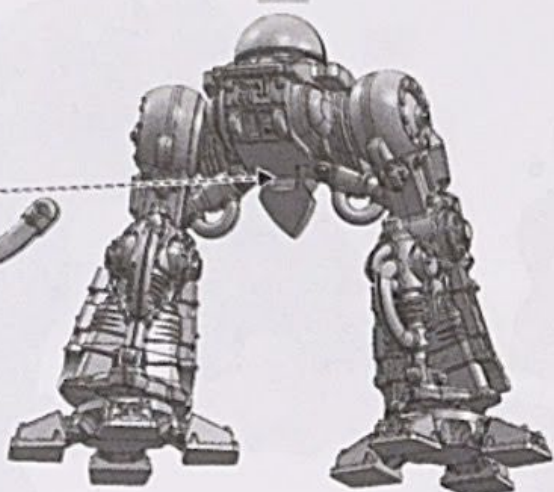
10**11 C.**

① Assemble last • Assembler en dernier • Montar último • Baue dies zuletzt zusammen • Assembla per ultimo

12

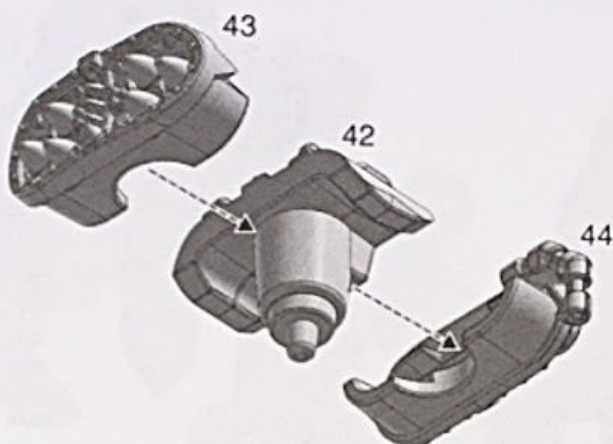


11



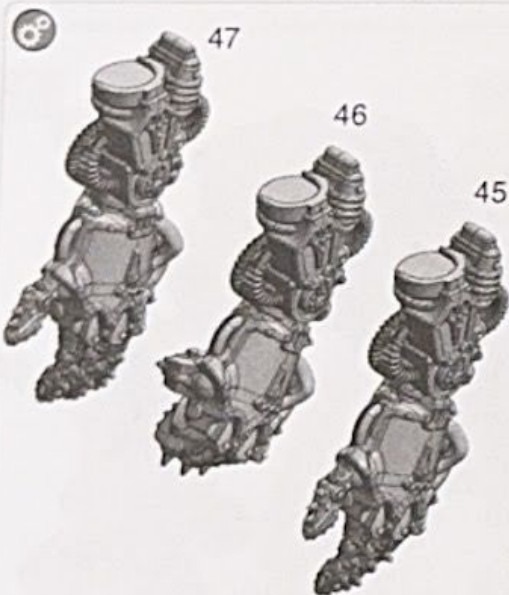
13

STORMSPEAR ROCKET POD

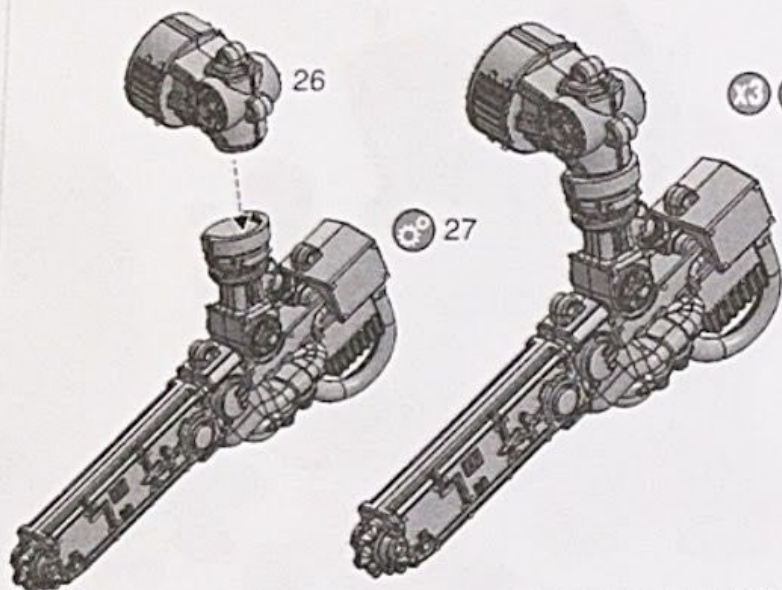


14

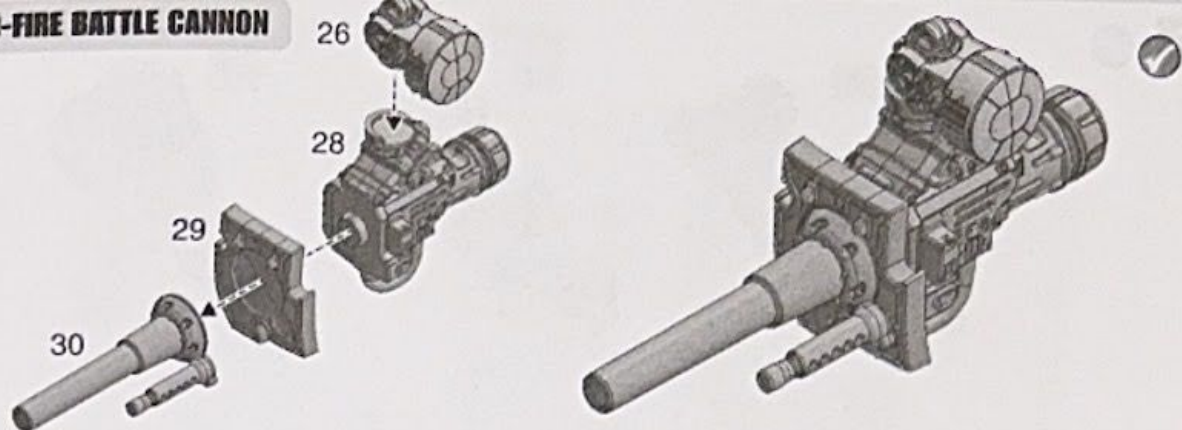
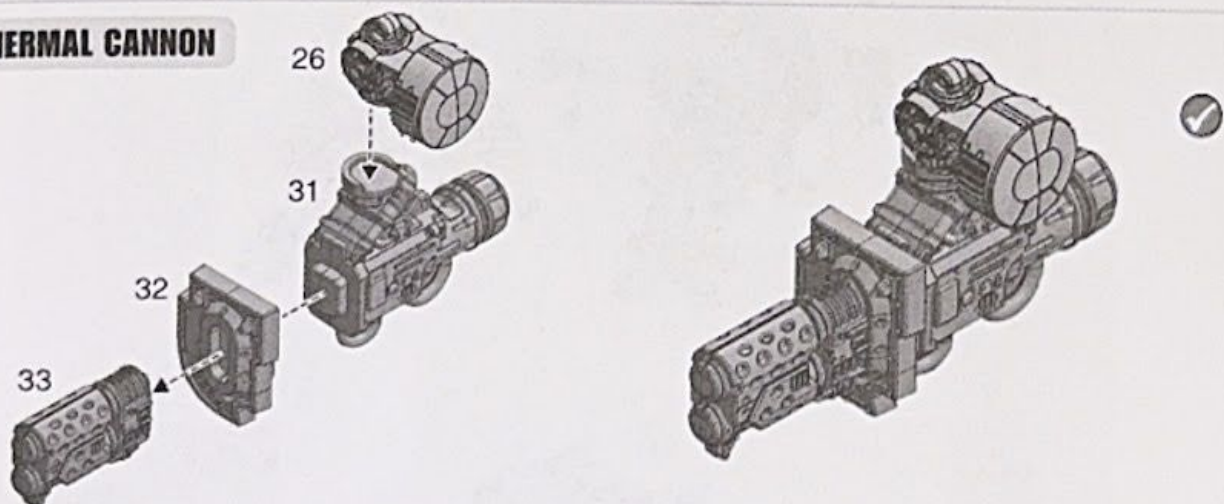
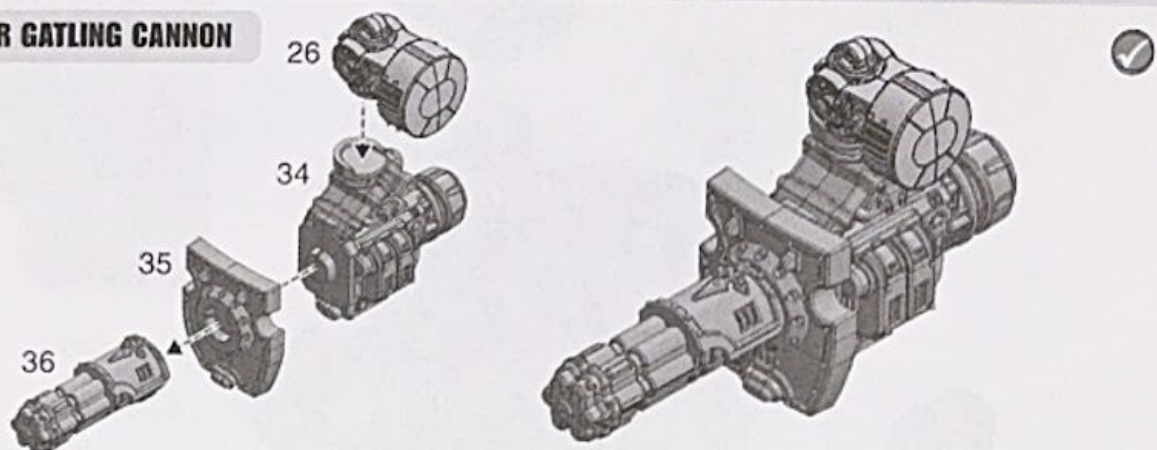
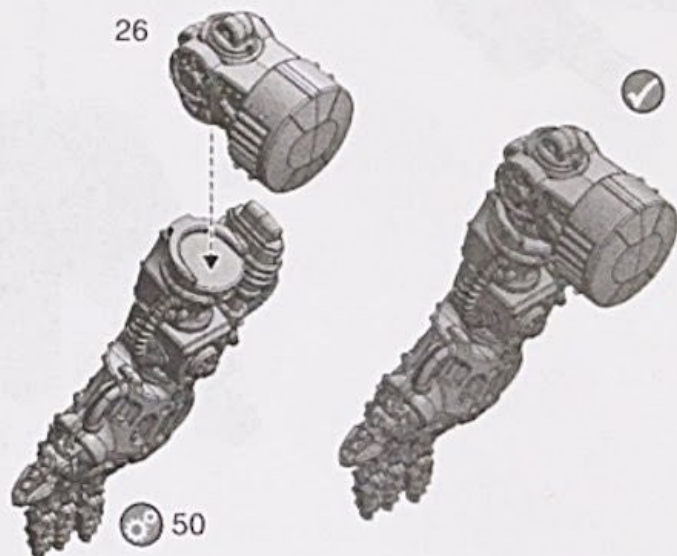
LEFT ARM OPTIONS



QUESTORIS MELEE WEAPON

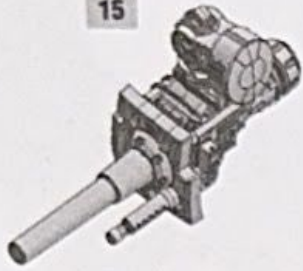


QUESTORIS MELEE WEAPON

15 RAPID-FIRE BATTLE CANNON**16 THERMAL CANNON****17 AVENGER GATLING CANNON****18 QUESTORIS MELEE WEAPON**



15



16



18



8

A.



10

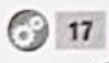
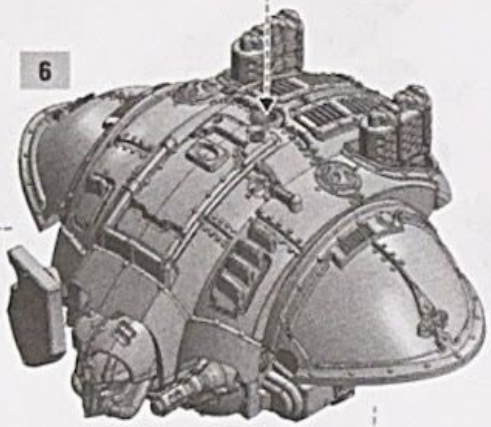
B.



13



6



17

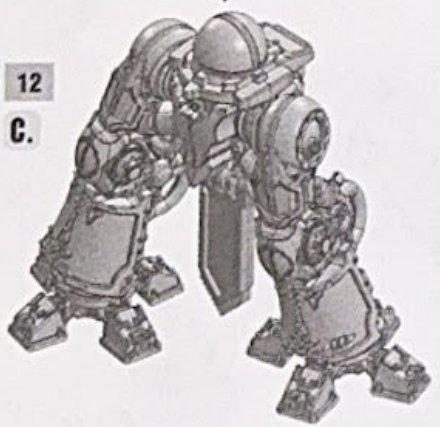


14

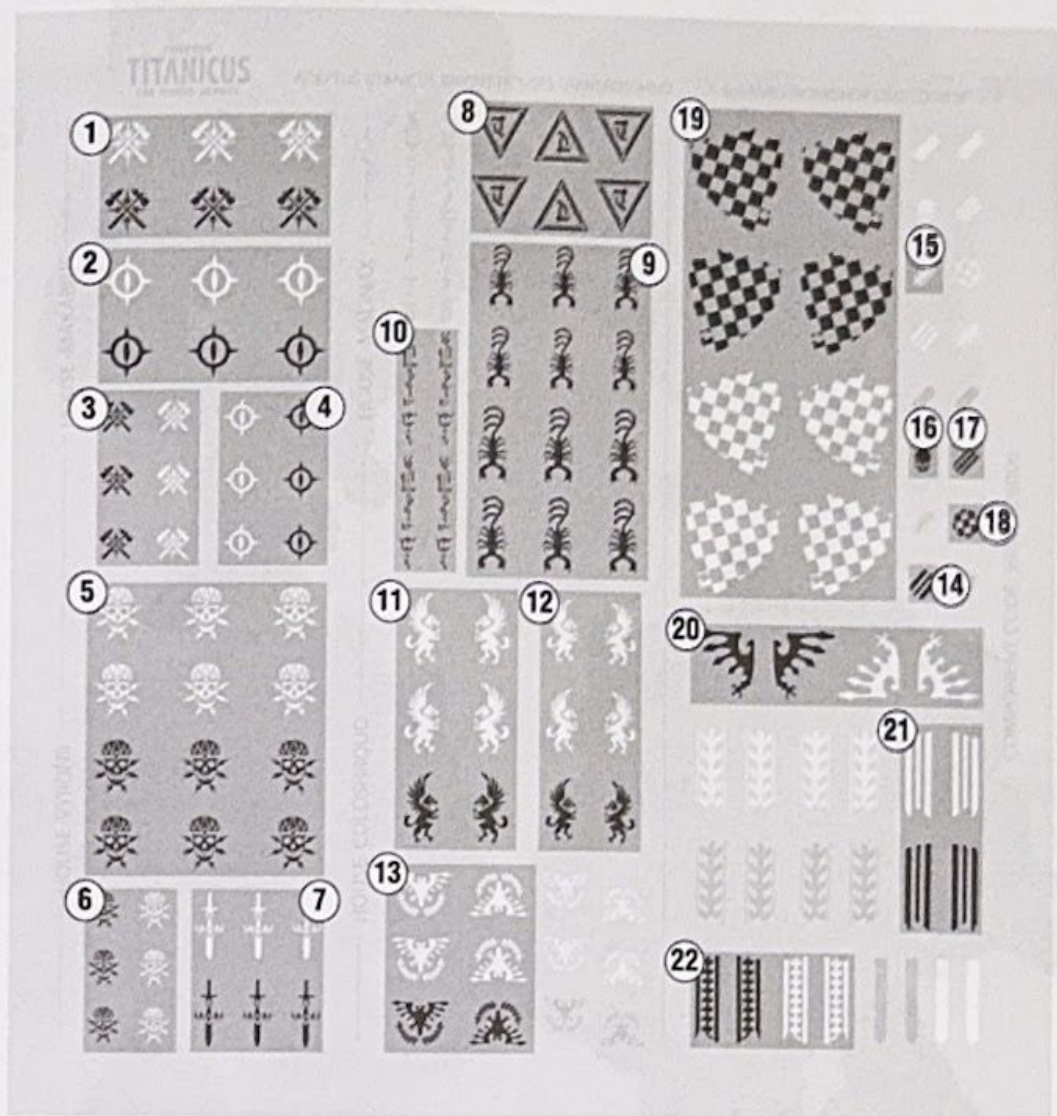


12

C.

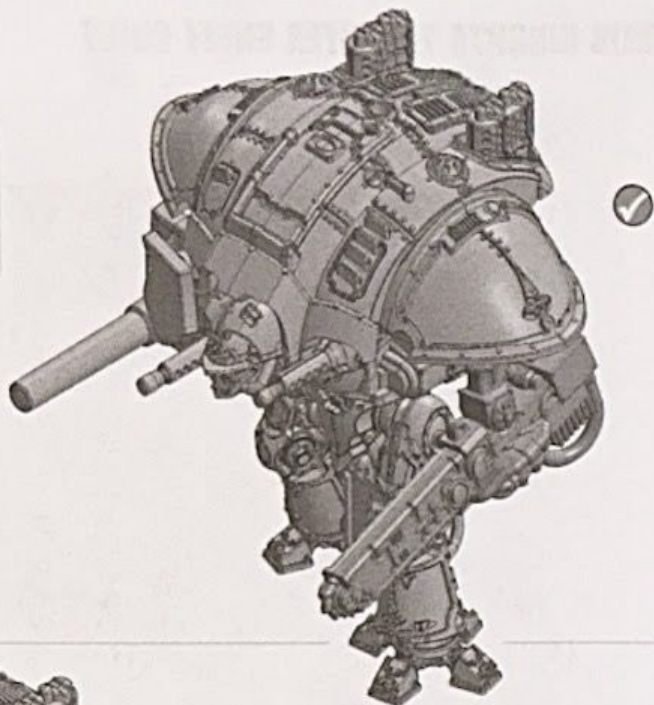


QUESTORIS KNIGHTS TRANSFER SHEET GUIDE



- 1-4 House Makabius Heraldry
- 5-7 House Vyronii Heraldry
- 8-10 House Malinax Heraldry
- 11-13 House Coldshroud Heraldry
- 14-18 Knee Plate Heraldry
- 19-22 Shoulder Heraldry

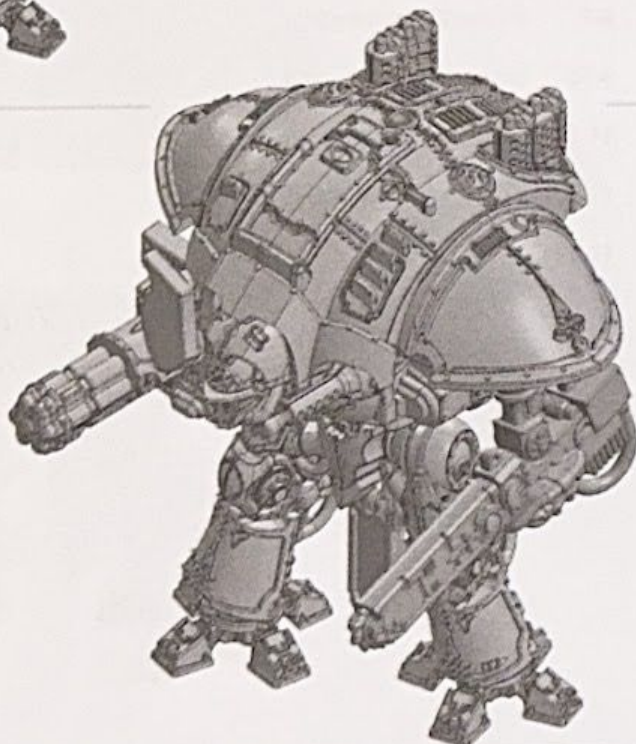
**RAPID-FIRE BATTLE CANNON
+ QUESTORIS MELEE
WEAPON OPTIONS**



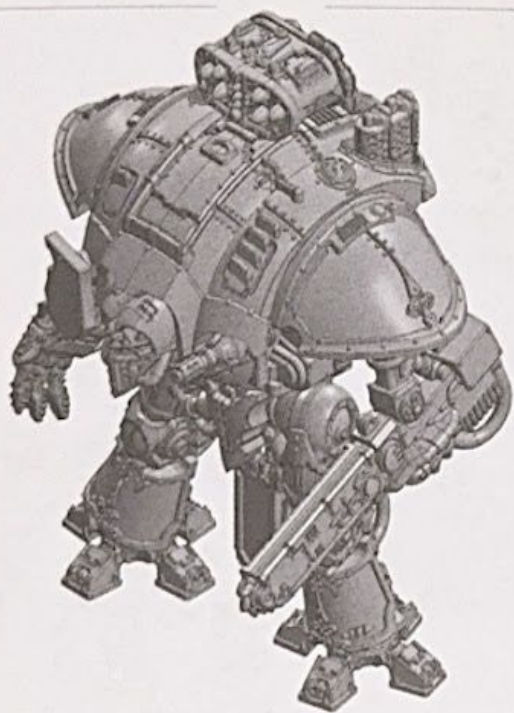
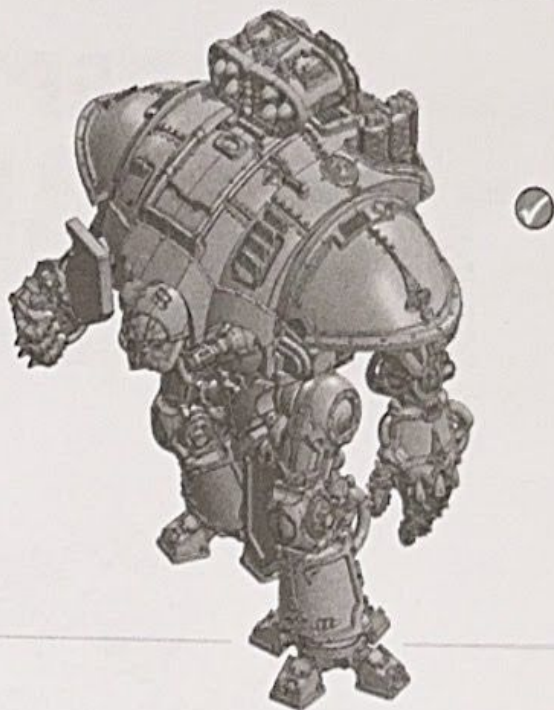
**THERMAL CANNON
+ QUESTORIS MELEE
WEAPON OPTIONS**



**AVENGER GATLING CANNON
+ QUESTORIS MELEE
WEAPON OPTIONS**

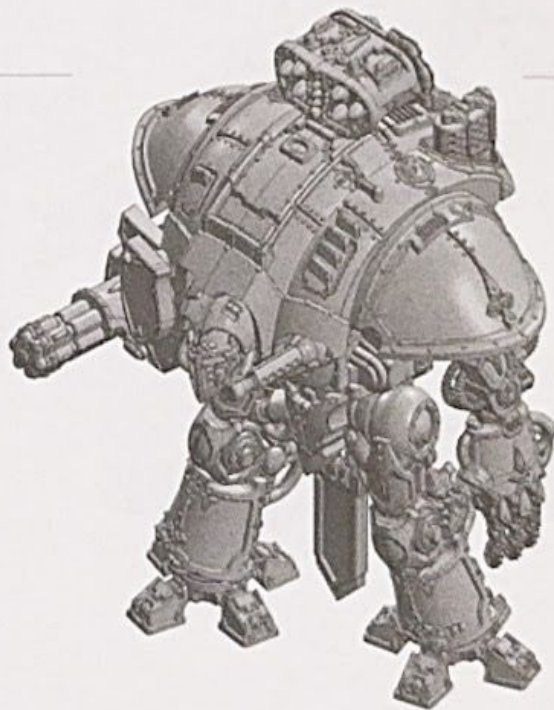


**STORMSPEAR ROCKET POD
+ QUESTORIS MELEE
WEAPON OPTIONS**



**STORMSPEAR ROCKET POD,
+ QUESTORIS MELEE
WEAPON OPTIONS**

**STORMSPEAR ROCKET POD,
AVENGER GATLING CANNON
+ QUESTORIS MELEE
WEAPON OPTIONS**



ADEPTUS TITANICUS™

